

Village News

for Bishopstone & Hinton Parva

August 2021



The Royal Oak at sunset. *If you want to read about its recent happens please see pages 3 & 12. Photograph by TF.*



And Now a New Beginning

You may or may not have heard but, as from this issue, the newsletter is no longer under the aegis of the parochial church council and is,

at present, being supported by the parish council.

As you can see, it is four pages shorter and, for complicated reasons, there are no advertisements. The team agonised about this and are truly sorry, as we have always valued the support of our advertisers and believe that we have been able to be of benefit to them. We are trying to solve the problem and hope that, in the not too distant future, we will be able to include advertisements again.

Meanwhile, we have a trade directory on page 3 for the advertisers who have supported us.

What with wasps, plastic-free July, and our recycling articles, it is great to see that so many people care about the environment. As my neighbours know, my contribution is hand weeding my drive, and I don't care if you all think that I'm nuts.

As we are preparing this newsletter, the weather seems to have realised at last that it is summer, so, whether you plan to spent your holidays at home or to go somewhere exotic like Filey, do have a lovely August.

mogs X



What is the name of this attractive beetle? You may well ask! We think we know; the answer is on page 9. Thank you, Chris Thomas, for the photograph.

<https://bishopstoneandhintonparva.org> for breaking news

In Defence of Wasps

Everybody has a wasp story, usually centred around pain, fear, and close calls like the ubiquitous *it crawled up my trouser leg but I didn't realise*. For most of us, this is an inconvenience; for some, a life threatening danger. In the UK, between two and nine people are killed each year from anaphylaxis brought on by bee and wasp stings. Now, consider that there are 66 million people in the UK and, although there are no accurate figures on wasp population, it can be reasonably assumed that the wasp population dwarfs our own. So the likelihood is that wasp encounters are common, but they are hardly the danger that some media outlets would have you believe. Sure, they are annoying but as with most living creatures, it is adapting our own behaviour around them that is the key. My mother has four apple trees in her garden, and the wasps love the windfall apples, I can count on one hand the amount of times I've been stung by them in my 40 odd years of life; their bright colours make them easily identifiable,



they are surprisingly tolerant up to a point, and can be just brushed away just don't trap them next to the skin.

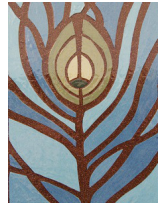
But what use are they? I hear you yell, *They don't make honey?* Well, I reply, *They are a natural pesticide their main diet is caterpillars, flies and any other small invertebrates that damage crops and garden plants. They may act like miniature flying armoured Vikings looting and ransacking the countryside of pests but to them we are scenery not the targets of their hunts. At the end of the season they go carousing on fermented fruit, living the good life, until death takes them to waspy Valhalla.*

So when you meet a wasp or two don't flail around madly like a Disney character; cover up any food in the near vicinity and gently shoo them away, or relocate yourself. On the topic of relocation, if you have a problem nest, ask around and see if they can be relocated rather than exterminated. They are part of the ecosystem and have positives to that system.

Wise Old Boon

News from Bishopstone Pottery

After a long 20 months we are opening our pottery doors again on **Saturday 4th and Sunday 5th September 10.30am – 4.30pm** to offer you the rare opportunity to visit the pottery and buy a variety of our locally made, exclusive, hand-made decorative ceramics, including raku, slip decorated and terracotta pottery. We have lots of new pieces to share



Pottery as seen on Grayson Perry's Art Club and currently exhibiting at Manchester Museum and Art Gallery.

Community Café

12 - 4.30pm Saturday, 28th August
Lyddington Village Hall.

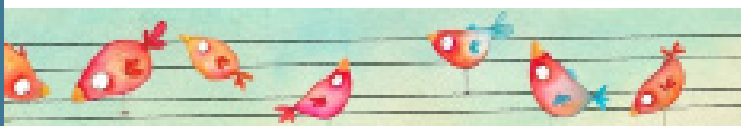
Our cafe will be indoor and outdoor
Last Saturday of the month



Live music from local artists and international musicians of **Sounds Like Women**, plenty of homemade cakes, teas, coffee, traditional soup and other stalls

Supported by local community and Swindon Domestic Abuse Support Services.

Contact 01793 790 265



Four Phenomenal Women
present
**A LIGHTEARTED
EVENING OF
DRAMA AND POETRY**

St. Michael's Church, Highworth
Saturday August 21st 7.30pm

Tickets £10 (including a drink)
from Lighthouse Bookshop
Highworth 01793 763337

Proceeds to Swindon Branch of Samaritans
Charity no. 219432

with you. While you are here stop awhile to sit in our peaceful garden and take in the Wiltshire views.

Sue & Adrian Dent

Bishopstone Pottery, 4 West End Lane, Bishopstone, Swindon, SN6 8PX
01793 790 246

info@bishopstonepottery.co.uk

If you cannot visit on the above weekend then we are happy for you to ring and make an appointment.

Letters to the Editor

Dear Editor-in Chief

A correction is needed re the Royal Oak article in your June issue. The wanton destruction of trees and hedging on The Marsh and Pack Hill in Wanborough is nothing to do with the Wasdell science park (hah!) proposal. It is for the construction of the grandly named Southern Connector Road as a 'by-pass' for the New Eastern Villages, a development of circa 8,500 houses on agricultural land north of Wanborough Road. Fear not, we are told that there will be a mass planting of whips (baby trees) and hedging to compensate for the losses so, in thirty years' time those of us still here will wonder what all the fuss was about.

As for the tin shed/science park application, that was rejected by SBC and, despite the applicants categorically stating that, were their plans to be refused they would not appeal, but would pull up sticks and move elsewhere (Basingstoke), an appeal has duly been submitted and currently is under way. We whose homes are close by Inlands Farm, await its outcome with more than casual interest.

Martin Savage

In Reply

The fact that it's the work of the council's own contractors on their grandly named and widened Wanborough escape road makes it even more laughable, and ought to make the rest of us despair.

I've had several messages of private support on this subject since my rant appeared—and have learnt one thing, which I offer here. On no account should anyone in these parishes ever ask for the road access to these

lovely places to be improved. We should learn to love the nasty bend towards Foxhill, the narrow bit close to Al Fresco, the tightness of Bodyhorse Hill, and the single track "new Road" out of Bishopstone. And, in a classic case of the pot calling the kettle black, we should learn to use them with care, so as not to draw them to the attention of our glorious leaders in Swindon. Who, it must be remembered, have made such a marvellous job of the town centre itself.

TF

The Village News for Bishopstone and Hinton Parva

Is published monthly and the next edition should be out by the last week in August.



It is free to all households in the parish.

The views of individual writers expressed in this magazine do not necessarily reflect those of the editor, the parish council, or the church. If you have any feedback, questions, or would like to submit a story for inclusion in the Village News, please contact one of the editorial staff listed below:

Editor:

mogsboon@hotmail.com

Subject: newsletter (in case my computer rather rudely thinks you are junk mail) or deliver to:

Brock Cottage, Hinton Parva, SN4 0DH, telephone 01793 790 626.

Sub-Editor:

Sheila Collins

admin2.collins@icloud.com

Features Editor:

Fiona McAnespie

mcanespief@gmail.com

1 Little Hinton Farm Cottages, Hinton. Please note that names and contact details must accompany these letters, but, of course, we will not publish your details unless requested to do so.

Local Services Directory

HOME & GARDEN

Austin (Heating & Air Conditioning) Ltd. 01793 536 871

Heritage Tree Care Ian Walding 01793 790 210

James's Landscaping & Gardening Service

James Robb 07863 599 991
Mr Crapper's Potting Shed 01793 854 874

Pinewood Fencing

Ian Leaver 01793 523 719

Well Hung Framing

Kate Herbert 07710 348 263

PROPERTY & AUCTIONS

Chappells Estate Agents

01793 618 080

Grant Fraser Town & Country

01793 228 440

Nationwide Property Lettings

01793 513 130

HAIR & BEAUTY

Charlotte Bentley Hair/Lashes

Charlotte 07786 992 598

Idoleyes Beauty

Filomena Pugh 07748 905 292

FOOD & DRINK

Ashbury Tea Room and Shop

www.ashburyshop.co.uk

Bloomfields Fine Food

01793 784 502

Bishopstone Stores

Lynne Muir 07453 243 976

Brewers Arms 01793 790 707

Helen Browning's Royal Oak

01793 790 481

Hinton Marsh Farm Shop

01793 633 716

Super Salad 07425 274 830

PROFESSIONAL SERVICES

Innovation IT Support

James Matthews 01793 541 320

Pearce Funeral Services

John Pearce 01793 832 072

CHILDCARE & EDUCATION

Alfresco Childcare 01793 790 263

LEISURE, HEALTH & LIFESTYLE

Barnes Coaches 01793 821 303

Herbalife Weight loss and Wellness

Peter Svensson 07832 193 362

Swindon Ski & Snowboard Servicing

Ian Thomas 07778 807 873

Walk on Air foot health

Ursula O'Dowd 07827 793 529

VILLAGE HALLS

Bishopstone

Richard Walker 01793 791 913

Hinton Parva

Bookings Janet Hawkins

01793 791 391

Bishopstone Village Hall

What a shame about the football! We were thinking of hoisting a George Cross flag (the correct way up, of course) but was not to be. It's back to business as usual at the village hall this summer. Forward bookings are up and by the time of reading this we may have a coat of Fuschia Pink on the outside walls, ready for the pending surge of parties and events that we had enjoyed prior to the pandemic.

We are still looking for a volunteer bookkeeper to balance the books and pay bills. Please do not hesitate to contact one of our committee members (Phil Collins, Roz Boot, Carol Sarchet, Rachel Hale, Alec Nicolls, Steve Bell or Russel Hatch) to discuss further.

Bookings & Enquiries:

Richard Walker 791 913

richardw@eddingtons.co.uk

Hinton Village Hall



At the time of going to press we don't know quite how *relaxed* the new Covid restrictions of the 19th July will be.

Suffice to say, the hall is open for business but retaining a cautious protocol of separation, mask wearing, and sanitation for the time being.

On the up side, the committee are installing 5 long *planters*, on the hall frontage, to act as a safety separation from the highway and to enable outside activity e.g. BBQ, as weather allows. The planting will be managed by volunteers, as is the routine hall cleaning.

The main contact for hiring is still Janet Hawkins 01793 791 391 and the fees are a simple £7/ hr for residents of Hinton Parva or Bishopstone and £9 / hr for non residents.

Hopefully, as the guidance and situation becomes clearer, capacity can

gradually return to normal.

The message is still to keep you and others safe and well.

peck34@john-lewis.com

Rod and Ken

On behalf of the Committee

We are very happy to announce The Band Club



For musicians and music lovers to gather, playing, singing, socialising, relaxing, and having fun with music together!

Starting in August, locally, weekly, probably Sundays.

Audiences will be more than welcome.

Those who wish to be a part of it (musicians, music lovers, audience) please phone me for more details –

mobile: 07541 956 179

home: 01793 790 265

Luiza Moir



Bishopstone with Hinton Parva

We look forward to our next meeting which will take place on **12th August** when we will be having **a demonstration of Indian Block printing** which should be fascinating.

We hope that this will take place at Bishopstone village hall but a final

decision has yet to made.

9th September - *An accidental violinist* with Helen Dearnly.

14th October - Songs from the shows with Ray Dance and Judith Sharp.

11th November - Tales from an MOD/ police dog-handler David Williams.

9th December - Christmas Celebration.

Recently, we have been pleased to welcome new members to our WI. Should anyone else wish to join us, or if you would like further information, please contact me on 790 432.

Judith Evans

Recycling Matters



More and more retailers seem to be getting involved in recycling, which – if they can't further influence the amount of plastic that is used in the packaging of the products they sell has to be a good thing. Sainsburys, Tesco and the Co-Op have announced that they're rolling out a soft or flexible plastic packaging recycling scheme to some of their stores. (Interestingly they all seem to think they're rolling out the biggest network of soft plastic recycling...! My dad is bigger than your dad eh?!!) This is particularly exciting because these plastics – things like salad and bread bags, film lids on yoghurt pots, pasta bags, biscuit wrappers, and crisp packets aren't accepted by the vast majority of kerbside collections, including our own, so often end up as waste. Although some food manufacturers like Walkers crisps and McVities do have their own recycling schemes, (the details of which you can find on their own or the Terracycle website), the convenience of being able to recycle these (clean and dry) trickier items on your shopping trip will hopefully influence more people to do so. (And potentially spend yet more money at that supermarket!)

A simple test to determine if your item fits the flexible or soft plastic bill is to scrunch it up and if it pings back, it's likely to be suitable for this type of recycling. Full details can be found on the Sainsburys media website, under

their latest sustainability news including a list of the currently participating stores. Their store locator also specifies what recycling each store takes – make sure you look for ‘flexible plastic’ rather than just ‘plastic’. Currently, in Swindon, the Bridgmead store is supposed to have this facility but not our nearer Stratton store. The Co-Op details can be found on their website by searching for recycling and includes a list of participating stores. The only current Swindon store with this facility is Highdown Way in North Swindon. And the Tesco Extra store in Ocotal Way should have the facility. I’ll do some investigating for the next article to see how far this ‘rolling out’ has got because the Newbury Sainsburys store is also supposed to

have it but my husband couldn’t find it today... but then he often can’t find things on our shopping list either!

You may have seen the Co-Op’s advertisements that all of their own-brand products now have fully recyclable packaging which is highly commendable. A Which magazine investigation this month also looked at supermarkets’ own label packaging – comparing what could easily be recycled rather than what could be recycled, although their figures were based on their most recent analysis in 2019. This has Morrisons coming out on top, with Aldi lagging behind. The Which report also looked at how accurate the supermarkets’ recycling labelling was (or is made available) and here Asda came out on top – with a score of (a

still low) 78%, with Iceland way behind with a paltry 38%. So trusting the labelling in the first place (if it is there!), may still cause problems. If you decide you want to avoid the packaging in the first place, Cheltenham, Abingdon, Wallingford and Oxford Waitrose all offer their ‘unpacked’ facility - a dedicated refillable zone where you can use your own reusable containers. Interestingly, this also includes beer and wine!! Or try out the ‘Packaging Not Included’ shop in Marlborough, closer to home. The plasticfreeswindon.org website also includes a list of Swindon shops, cafes and pubs which allow you to refill your own containers.

Karen Walker

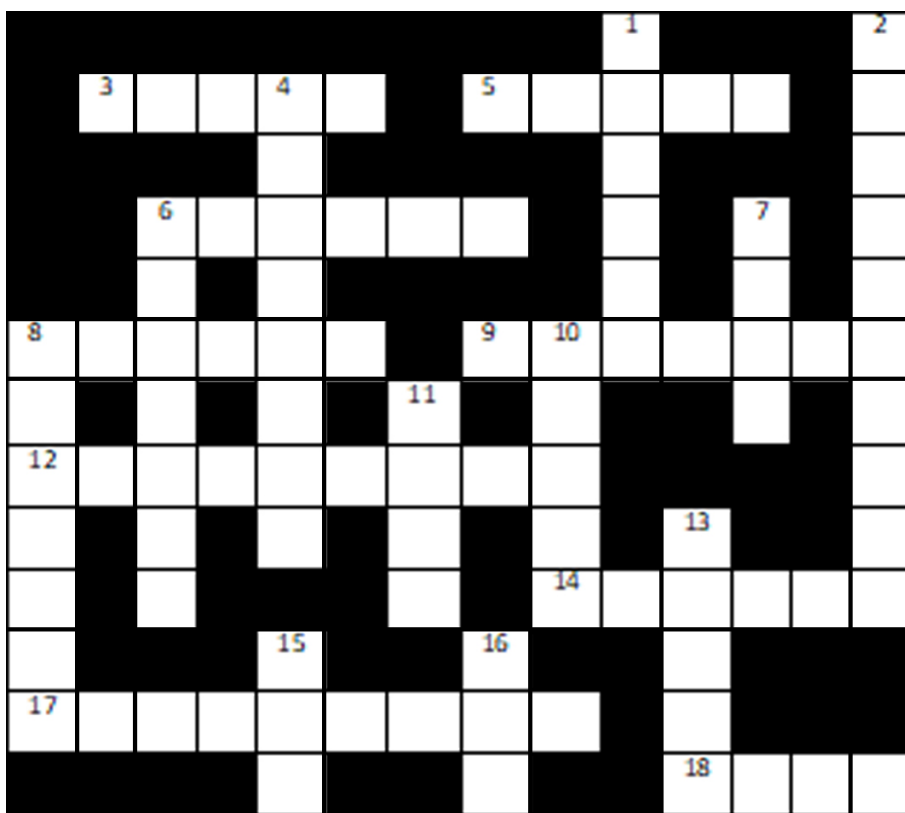


Pete's Puzzle - Music

The answers are all pop or rock groups from all ages. If *The* starts the group name, this is not in the answer, e.g. The Temptations would just be Temptations.

Please submit your completed crosswords to the Editor by the 10th of the month:

mogsboon@hotmail.com or 790 626 or stick the answers through my letterbox Brock Cottage, Hinton.



Across

- 3. Not ramp.
- 5. Vital organ.
- 6. American city.
- 8. Skinny letter.
- 9 &
- 14A. Moving rocks.
- 12. No sinners.
- 14. See 9A.
- 17. Sweet tots.
- 18 &
- 1D. Winter policing.

Down

- 1. See 18A.
- 2. Seasoned ladies.
- 4 &
- 13D. Feline mannequins.
- 6. Wrist jewellery
- 7. Eastern continent.
- 8. Creepy crawlies.
- 10. Swindon attraction.
- 11. Over done.
- 13. See 4D.
- 15. Alphabet start.
- 16. I agree.

Answers to July Crossword

Across: (1) Deputy Dawg; (5) Pongo; (6) Lady; (7) Droopy; (11) Nana; (12) Boot; (14) Dougal; (15) Odie; (16) Scooby; (17) Spot, and (18) Hucklebury.
Down: (1) Dill; (2) Perdita; (3) Doo; (4) Goofy; (8) Roobarb; (9) Pluto; (10) Snoopy, and (13) Kipper.

July winners: Debbie Clark

Don't forget that if you send us the correct solution you could win a Royal Oak voucher worth £10.00.

Also, does anybody have any ideas for future crossword topics, please?

The Parish Times

August 2021

HAVE A SAY ON ROAD SAFETY



Swindon Borough Council is seeking views on its updated draft road safety strategy and draft 20mph schemes policy.

The parish council will be voicing its opinions on the issues - and residents can also have a say.

SBC's last road safety strategy - The Strategic Plan for Accident Reduction - was approved in 2010 and with changes in national guidance and best practice and the slowing of progress in road casualty reductions, it is timely that the council's approach to road safety be updated.

The road safety strategy is intended as an interim two-year measure to introduce a safe systems approach to how the council will achieve further reductions in the number of casualties injured in road traffic collisions.

Key to the adoption of a safe systems approach to road safety, is having the wider community at its core. So whilst Cabinet approved the draft interim strategy in March 2021, the council is keen to understand the views of the borough's businesses and residents on the new approach and the proposed vision and objectives of

its road safety activities.

The safe systems approach is based on five pillars, one of which is safe speeds. In line with the updated draft interim road safety strategy, the borough council is also proposing a new draft policy on 20mph schemes. This proposes a change in the local approach to allow a greater priority to be given to the introduction of 20mph schemes on residential streets where there is a high volume of use by vulnerable road users.

The feedback received to the survey will be used to help to inform development of a longer-term strategy for the Wiltshire & Swindon Road Safety Partnership, of which Swindon Borough is a member.

Comments received on the draft 20mph schemes policy will also be considered in finalising the draft documents for presentation for adoption by Cabinet later in the year.

To take part go to: www.swindon.gov.uk/info/20019/consultations_engagement_and_surveys.

Provide your feedback, by completing the survey no later than 5pm on Friday, 27th August.

NEWS IN BRIEF

KEEP AN EYE ON REGULATIONS

Our Parish contains two conservation areas and everything south of the Icknield Way is also in the North Wessex Downs Area of Outstanding Natural Beauty. Many houses are also listed.

Naturally this brings with it all sorts of problems when it comes to tree felling, house alterations, etc. There are also other regulations aimed at preserving the character and beauty of the parish. If in doubt, please check, we are only a phone call away. The Parish Council is always available to answer any questions you may have on any particular aspect of living in a conservation area, the area of outstanding natural beauty or in listed buildings. Contact the Clerk, the Chair or any member of the council - the councillors email addresses appear on the following page, along with the Clerk's telephone number.

PARISH BUSINESS

The Parish Council's monthly meeting is a very effective and immediate forum for discussion of matters of concern to villagers.

Every Parish Council meeting starts with a 'public question time' and all residents are welcome to attend and ask questions.

Meetings usually start at 7.30pm, alternating between Bishopstone and Hinton Parva. Residents can also contact the Clerk to raise any issue, and councillors will respond as quickly and fully as possible.

Agendas and minutes are published online at bishopstoneandhintonparva.org/parishcouncil/ and paper copies are posted on the village hall noticeboards. Members of the press and public can contact clerk@bishopstoneandhintonparva.org or telephone 07913 819422 to submit questions or attend.

ANTI-SOCIAL BEHAVIOUR

Residents are reminded that they can call 101 to contact the police if they have spotted anti-social behaviour around the villages and the issue is not an emergency.

FOLLOW ALL OUR LATEST NEWS AT facebook.com/bishopstoneandhintonparvaparish

THE PARISH TIMES FOR BISHOPSTONE, HINTON PARVA AND RUSSELY PARK

The Voice of the Parish Today

BISHOPSTONE PARISH COUNCIL**Ms Jaine Blackman (Clerk)**

Phone: 07913 819422

Email: Clerk@bishopstoneandhintonparva.org

Mr Julian Cooke

Councillor-jc@bishopstoneandhintonparva.org

Mr Nigel Crisp

Cllr.crisp@gmail.com

Mr Doug Stevens

Councillor-ds@bishopstoneandhintonparva.org

Mr Ian Thomas (Vice Chair)

Councillor-it@bishopstoneandhintonparva.org

Mrs Val Brodin (Chair)

Cllr.valbrodin@gmail.com

Mr Tom Green

Councillor-tg@bishopstoneandhintonparva.org

Mrs Gill May

Councillor-gm@bishopstoneandhintonparva.org

Mrs Helen L'Abbate

Councillor-hl@bishopstoneandhintonparva.org

Mr Andrew Clark

Councillor-ac@bishopstoneandhintonparva.org

The Parish Council's policies and documents can be viewed at [at bishopstoneandhintonparva.org/](http://bishopstoneandhintonparva.org/)

PLANNING UPDATE

All planning applications, their history and all supporting documents can be viewed at:

www.swindon.gov.uk/planning

Planning issues are discussed at the monthly Parish Council meetings. Public representations are heard prior to the start of the meeting.

PC Meetings 2021/2022**2021**2nd August **Hinton Parva**6th September **Bishopstone**4th October **Hinton Parva**1st November **Bishopstone**6th December **Hinton Parva****2022**10th January **Bishopstone**7th February **Hinton Parva**7th March **Bishopstone**4th April **Hinton Parva**

All meetings begin at 7.30pm. Late changes are shown at bishopstoneandhintonparva.org/parish-council/ and on the notice boards. Members of the press and public are welcome and should contact the Clerk at clerk@bishopstoneandhintonparva.org or telephone 07913 819422 to submit questions or attend.

Useful Information**SBC Reception Premier House**

01793 465055/465056

Civic Offices

01793 463668

Wat Tyler House

01793 463725

General enquiries to Streetsmart 01793 445501**Borough Councillor**

Gary Sumner - GSumner2@swindon.gov.uk

Key Responsibility	Representative Hinton Parva	Representative Bishopstone
Finance	Nigel Crisp	Helen L'Abbate
Footpaths and Highways	Julian Cooke	Ian Thomas
Pond & Island		Doug Stevens
Hinton Parva Village Hall	Andy Clark	
Bishopstone Village Hall		Tom Green
Hinton Parva Charities	Peter Cooke	
Bishopstone United Charities		Doug Stevens Christine Thomas Laurie Manktelow (Ex Cllr)
Trees	Julian Cooke	Ian Thomas
Russley Park Liaison	Nigel Crisp	
Responsible Financial Officer		Jaine Blackman (Clerk)
Plannng		Ian Thomas/Tom Green
Website/IT Policies	Nigel Crisp/Andy Clark	Gill May/Helen L'Abbate

PLANNING APPLICATIONS

S/21/0940 Demolition and conversion of existing barns and erection of 2no. new buildings to create 5no. dwellings, with associated garages, landscaping, ancillary development and repairs to Grade II Listed wall without compliance with conditions 3, 15, 19, 20, 21, 22 and 23 from previous permission S/18/1709 at Prebendal Farm, Icknield Way, Bishopstone.

S/LBC/21/1119 Demolition and conversion of existing barns and erection of 2no. new buildings to create 5no. dwellings, with associated garages, landscaping, ancillary development and repairs to Grade II Listed wall without compliance with condition 3 from previous listed building consent S/LBC/18/1710 at Prebendal Farm, Icknield Way, Bishopstone.

S/21/0698 Erection of 1 no. dwelling and garage at land adjacent to Upper Farm, Hinton Parva Lane, Hinton Parva.

S/HOU/21/0652 Conversion of an existing double garage, the demolition of lean-to and erection of a two storey extension at Charlbury Cottage, Icknield Way Bishopstone.

S/OUT/18/1943 Science Park at Inlands Farm, The Marsh, Wanborough.

S/RES/21/0498/EDSN Erection of 79no. dwellings. Redlands (Phase 1) Eastern Villages.

S/RES/21/0454/EDSN Erection of 81no. dwellings. Redlands (Phase 1) Eastern Villages.

S/OUT/20/0160 Up to 358 dwellings and a mixed use hub at Foxbridge Village, New Eastern Villages Wanborough Road.

S/20/1598 Erection of 1no. dwelling without compliance with conditions 9, 10 & 12 from previous permission S/12/1585 at land adjacent To Forty Cottage.

S/OUT/17/1990 Up to 1,550 homes at Great Stall East - Land South Of The A420, .

S/OUT/19/0582 2,500 homes at Lotmead site.

S/OUT/20/0533 Up to 220 no. dwellings at Foxbridge Village North.

S/RES/21/0867/EDSN Redlands Phase 2. Erection of 102no. dwellings.

S/HOU/21/0744 Erection of a single storey rear extension, porch and replacement of roof at Crossways, Hinton Parva Lane, Hinton Parva.

GRANTED S/21/0732 Change of use of 2no. redundant agricultural buildings, amending permissions S/PAG2R/20/0798 and S/PAG2R/21/0204 at West Hinton Farm.



101 is the new number to call when you want to contact the police - when it's less urgent than 999. In a non emergency dial 101 if:

- you want to report a crime/issue that does not require an immediate emergency response
- you or someone else are not in immediate danger
- you would like to speak to your local police officer
- you want to provide information about a crime

If you are deaf, hard of hearing or speech impaired you can textphone 18001 101 in a non emergency

Church Services in the Benefice

Sunday	1st August	10.30am	Holy Communion	Bishopstone
	9 th Sunday after Trinity			
Sunday	8th August	10.30am	Holy Communion	Wanborough
	10 th Sunday after Trinity			
Sunday	15th August	10.30am	Holy Communion	Hinton Parva
	11 th Sunday after Trinity			
	St. Swithun			
Sunday	22nd August	10.30am	Holy Communion	Lyddington
	12 th Sunday after Trinity			
	James the Apostle			
Sunday	5th September	10.30am	Holy Communion	Wanborough
	13 ^h Sunday after Trinity			

As the newsletter goes to press, the recommendation is that masks are worn, but this may change next week, so for up to the minute information, please contact the vicar. Thank you.

All dates and times printed are as submitted to the Editor.

The Vicar's Letter

Dear Friends,

As I write this letter I am still not sure what August will bring in terms of worship in the church. Yes, there will still be advice to wear masks in certain situations, but, with the relaxing of Covid restrictions, I very much hope that we will be able to sing hymns again.

Several of the things that build up our church community have not been allowed through the pandemic – no singing, no passing the peace, and receiving the bread but not the wine at communion. It hasn't helped by the fact that we try to identify one another while wearing masks!

Over the centuries the church has weathered many storms and stood firm – and that is the case for the churches in our benefice. We have remained open and ready to welcome everyone in despite the recent challenges. It will take time to build up our worshipping community again and I am reminded of the slogan some years ago *Use it or Lose it!*

We have just had our first wedding since the pandemic began, and it was wonderful to see the church welcoming in family and friends of the bride and groom. It was a glorious celebration of love, and that is what

the church is about. At the heart of all our worship is the love of God revealed in His Son Jesus Christ.

It is that love that unites our four churches of the benefice. It will be lovely to see them thriving again after a difficult time, so please come and join us for worship – you will be very welcome.

There will be one other change at the end of August, as the Revd Phil Ashby leaves the Benefice of Lyddington & Wanborough, Bishopstone with Hinton Parva to help in another vacancy in the Deanery. We thank him for his help and support over the past few months and pray for his new ministry. Any queries you may have please contact myself or one of the church wardens. We are all here to help.

With my love and prayers.

Sandy

Revd Sandy Railton:

01793 814 162 or 07867 525 641

Email: sandyrailton@icloud.com

Revd Phil Ashby:

01793 978 528 07807 789 649

Email: revphilashby@gmail.com

St Mary's Bishopstone
Cleaning Rota

August Liz Warwick &

Jane Manktelow

September

Rachel Blunt &

Caryn Greenhalgh

October

Lorna Ford &

Linda Matthews

November

Jill White

& Karen MacGregor

December

Fran Shishton &

Karen Stevens

Mary Darling, 790 700, is volunteering to stand in for anyone needing cover for holidays/illness etc.

Many thanks to you all for your hard work keeping the church clean.

We always welcome new volunteers on the rota, please join us!

Sarah Best 791 121

Parish Contacts

The Vicar: The Parish is in vacancy.

Parish service cover and pastoral care is being provided by the Rev Sandy Railton. Please contact her through the new Benefice email

villagechurches@gmail.com

PCC Vice Chair – Alan Taylor

01793 791 666

R2attayloralan@aol.com

Church wardens:

St Mary's

Doug Stevens 07899 791 833

dougstevens1966@gmail.com

Joint warden

David Aitken

07738242765

boobooks.books@gmail.com

St. Swithun's

Tom Cripwell 01793 791 148 tomcripwell@gmail.com

Treasurer

Chris Thomas 01792 790 106 littlecot2010@hotmail.co.uk

PCC members:

Roz Boot 01793 790 508

Karen Stevens 01793 791 107 kschurchview@gmail.com

Bishopstone Stores**Opening Times****9.00am - 5.00pm Mon - Thurs,****9.00am - 6.00pm Fri & Sat****10.00am - 2.00pm Sun****Bishopstone Stores**

Last month was Plastic Free July, an incredible initiative that started in Australia in 2011 and has now spread across the world, encouraging people to refuse to use single use-plastics. Our kitchens are the most wasteful room in the home, so it makes sense that this is the best place to start to make even the smallest of changes. This doesn't have to be difficult, and the chances are you are already using less plastic than you were just a few years ago. Just a slight change in your habits can make a difference to our oceans and environment. We've got plenty of ideas here in the shop to help you along the path of refusing to use!

If you already buy your veg from us, it is completely plastic free. Grown just down the road at Coleshill Organics, it arrives with us in cardboard boxes that have been previously used, and which we reuse again! It's then sold to you in a brown paper bag, (or bring your own if you wish) This lovely veg has never even seen a plastic wrapper!

Many of our regular customers are now in the swing of our milk refill station, which is fantastic to see. If you haven't started yet, bring along your bottle, or purchase one here, and start filling! It also saves you money as our refills are 15p per litre cheaper than the plastic bottles, and with the average person consuming 70 litres of milk a year, it's all going to add up!

Cakes in the shop are now plastic free – we got rid of the clingfilm and invested in a great new cake stand! If you want to cut out the clingfilm at home, pick up an organic

beeswax wrap next time you are in the shop. They are great for covering leftovers and wrapping anything from sandwiches to cheese!

Always here to help and inspire you – let me know if there is anything else you would like to see in the shop, or any other changes you think we could make.

*Lynne Muir***Well Hung Framing**

Local picture framer, Kate Herbert, has run her studio workshop, Well Hung Framing, in Watchfield since settling in the area in 2015. As a mother of two school-aged children, she started picture framing about ten years ago, and has now become something of the *go to* framer of choice for those wanting beautiful, high quality products at very competitive prices. *I love the variety of picture framing, and I really enjoy working with clients to help them select the most appropriate combinations of mounts and frames to complement their pictures* said Kate, in her well-stocked basement studio. *It's such a pleasure being able to frame precious memories for people – from relatively straightforward prints, photographs, and certificates, through to more complex pieces like a child's first pair of shoes, a set of medals, or a sporting shirt.*

As Kate has become locally established, she has developed a loyal following from near and far, and takes enormous pride in the personalised nature of her work, spending time with her clients to discuss their ideas, while providing helpful advice on mount colours and styles, and the perfect frame in which to put the work. With more than three hundred frames to choose from, the choice could be bewildering to the uninitiated, but Kate's creative and experienced advice is sure to help everyone make the right decision. *Working closely with my clients is the*

most rewarding thing about my job. Whether it's a relatively simple job on a budget, or a more complicated piece of fine art, there's nothing more satisfying than seeing a client delighted with the finished product.

With a number of testimonials on her website, the evidence of Kate's professional excellence is clearly undisputed. As one satisfied customer states, *I have used Well Hung Framing on many occasions for all sorts of different pieces and I have been more than delighted with the result every time. Kate has a fantastic eye, so even if you're not sure where to start with your piece of artwork, photos, medals etc – Kate has lots of great ideas which not only 'frame' your chosen piece but enhance it. Kate's work is great value too – easily beating High Street prices. Equally, the turnaround for getting the work done is always minimal. I would strongly recommend using Well Hung Framing in a heartbeat. Thank you.*

07710 348 263

bykatehertbert@gmail.com

www.wellhungframing.co

The Gardening Club

The Plant Sale's final total this year is £523.50, which has been donated to Twigs Charitable Trust

Name that Beetle

Front page

Of course! you all shouted, That beetle is called rutpela maculata. Well, I didn't know.

Thanks, team, for finding out.

*Ed***Wanborough Farmers' Market**

There will be no farmers' market in August (the 21st), to avoid clashing with the village show, although some traders can be found up there on Church Meadow. For information about future markets see the Wanborough website:

www.wanborough.info
or contact Sue or David Birley:

01793 790 438

sbirley@gn.apc.org

School Report



When writing this we have two weeks to go... Keeping everything crossed for a smooth ending.

The Roman Gladiator visit came and went; I think we were all a little scared of him, especially when the children were taught sword combat. Even Mrs Morris had a go at tackling our Roman warrior. Much information was learnt and in such a fun and interactive way (and, of course, socially distanced still!).

Talking of interactive, the school has signed up for a new immersive experience called now>press>play. Myself and Year 3/4 gave it a trial run and it got a unanimous thumbs up. The company has created highly imaginative stories, based around specific topic areas, which are told to each child directly, through a set of headphones. We launched ourselves around the playground taking part in *The Great Fire of London*, looking for our missing cat Max and helping to put the fire out. The idea behind this is that the children experience and feel emotions as though they were there. They get to move alongside the narrative, making it more interesting for our variety of learners. This in turn then helps a child write with far more insight and motivation having had a *first hand experience* rather than being told purely through the teacher. However, the bonus, if you were looking into the playground, was that we were completely silent! Apparently, Mrs Tremlin thought my *horse riding* was outstanding, and only became slightly concerned when we all dropped to the ground simultaneously (the story had told us to get into bed!). We look forward to exploring many more of the benefits of this in the next academic year (apparently they are also good for silent discos... anybody??).

We are delighted to be welcoming Mrs Beales into our school community; she will be replacing Mrs Tremlin (who isn't actually 'replaceable'). Mrs Beales has worked as a Senior Administrator/Finance Officer in other small schools and I am sure she will soon get into the swing of things

at Bishopstone. That means, on a very sad note, we will be saying goodbye to Mrs Tremlin, who has been at the core of the school over 23 years. Her role has changed dramatically and now encompasses everything from additional covid cleaning to lunch duties, all of which she has fully embraced. Her knowledge of the school is astounding, and her support of the school knows no limits (alongside our highly valuable *handy man*, Mr Tremlin). In my mind, it is most definitely not goodbye though, just a change (where she gets to wind me up with tales of being sat serenely in the garden whilst I deal with flooding toilets... again). Moving swiftly on, before I am a crying wreck at losing my very special side kick... we have a wonderful week of activities planned for our Y6 leavers. They will be getting up to all sorts, from pottery to football golf. They are a wonderful year group, but most definitely ready to move on to their 4 different secondaries. They represent everything we strive for at Bishopstone CE. They are kind, considerate, curious, life learners, and are going to be utterly amazing in their new schools.

We will see you all in what will, hopefully, be an exciting and positive new academic year! Enjoy your summer.

Emma Lindsay

Footfree and Fancy-tech loose

Well, what a few weeks we've had. The editorial team's been on tenterhooks, terrified that we'd be flooded with pictures of professional tennis players' feet (which are, I'm sure you recall from last month, rumoured to be spectacularly unpleasant to look at). It's with great relief I can report that no pictures have been received. A big phew all round, I think, as I know Ed would have insisted on sharing the evidence with you all. Possibly a missed opportunity, however - I bet a front-page *disgusting foot* picture would have been a first for a local newsletter, and possibly have got us into the Guinness Book of Records.

I must apologise to those of you who thought you'd be coping with the football with just a few tissues to

mop up your tears; I forgot to suggest having a large bottle of Valium to hand, to help you through the inevitable penalty shoot-out. Those of you who don't watch football probably have a much longer life-expectancy than those of us who've watched the England team take far too many penalties. For those who really feel the drama's too much for them, I can highly recommend watching on a tablet, with a slight delay between the live action and the screen. By doing that, I'd inadvertently received a news update to tell me the result before the last two penalties were taken, so I wasn't nearly so nervous for those. Disappointed, yes; nervous, no. A recent visit to friends showcased another clever technological breakthrough, on the drinks ordering front. We went to their local hostelry (they don't live locally, so don't panic - Tim hasn't installed an app), and, despite our clear preference for speaking to someone, we were encouraged to place our drinks order via our phones. We tried to oblige. Unfortunately, the drinks we actually wanted weren't on the on-line menu. After much trial and error and muttering on our part, a young chap approached and asked if he could help. We asked if we could order a half of lime and soda at the bar; *Yes* he said. *Well*, we said, *You can't order it on your app. I'm sure that's not right*, he confidently replied. After ten minutes of faffing about on his phone, he had to agree that although one could order a pint of lime and soda, it was impossible to order a half. So he brought us one free of charge. When we had the same problem trying to order decaf coffees later in the evening he had to admit that the system wasn't perfect. There was a certain irony, too, in bar staff encouraging customers (who would much rather have ordered their drinks from bar staff) to order their drinks from an app that would effectively reduce the need for quite so many bar staff... Speaking of electronic improvements - should you have a spare few hours to kill, try a conversation with Electrolux's bot, Freya. I had

the pleasure of speaking with her on three occasions earlier in the week and have only just recovered from the experience. My favourite moment was when she asked my first name and, when I said *Fiona*, she very huffily announced that she wouldn't talk to me any more as I'd used a rude word. Perhaps she's psychic; talking to her had certainly made me think a lot of rude words. . .

Mrs Mantelpiece



By the time you read this, I expect the combines will have started this year's harvest. Despite a forecast later start, my brother saw harvesting on 30th June near Padstow in Devon, which is very early. Writing this from very rural south west France on 14th July drizzle has caused a pause, but here they are well into the wheat crop and some maize is already 2 metres high. The crops look good in this area and not lodged (flat). Our local farm has just turned organic. Most are small family affairs here. We have a turtle dove purring away in the garden, although we have not seen a hoopoe this year, we have seen what looks like a goshawk on a local drive.

Travel here via Heathrow and Toulouse was not stressful, with a quick Covid test at Heathrow, then we have to get tested locally for the return. President Macron does not require us to isolate once here.

Before this, we could not refuse an invitation to join two other couples fishing the river Carron (well north of Inverness, meeting the sea at Bonar Bridge). Our beat was at the end of a road eight miles from the coast and, from there, it was only twenty miles to Ullapool in the west. A challenge for another day! Harry Townshend has just walked 100 miles non-stop in 24 hours for the Game Conservancy charity- that's four marathons. What a feat! The weather was glorious, and no good for fishing so I am still a fishing virgin! However, watching the salmon leaping, if not taking the fly, keeps up the interest. Curlews and cuckoos were still calling in the uplands, and one of our party

had seen a grouse with ten young. The arable farming on Black Isle and further south, coming east through the Borders, was of a high standard. The crops, unlike most of ours in the south, were clean of the dreaded black grass. Potatoes in their rotations seem to help weed controls.

Dickie Green

Alfresco Childcare & Forest Pre-School

I was recently invited to Alfresco to fact-find for this article to help support and promote local businesses whilst the Village News is (hopefully temporarily) advertisement-free. My own children went there, many years ago and the memories soon came flooding back! Whilst there, I remembered that choosing childcare isn't just about facts – of course, Ofsted reports, ratings, awards, and flexible hours are important – all of which Alfresco does very well with – but it's also about feelings. Back then, we spent ages exploring options for looking after our 13 month old twins, and chose family-run Alfresco for its homely, nurturing environment.

Alfresco is still run by the next generation of the same family, and the ethos remains the same. There's a big emphasis on healthy living with fresh food cooked on the premises and lots of opportunities to make the most of the large outside space. Indeed, as you would expect of a *Forest Pre-School*, all of the children who are 3 and over have all of their activities and learning outdoors, or in the forest lodge. The children have their own vegetable garden, mud kitchen, and music area. They've helped build their own bug hotel – not with pretend tools but by carefully supervised use of real ones. The children are surrounded by the natural environment and it was wonderful to see them using their imaginations in their play, rather than this year's latest plastic toys or electronics.

The children are very active, helping build dens, climbing trees, playing in their teepee, or enjoying their impressive improvised playground. They go on farm visits, hikes, and treasure hunts in the surrounding countryside. My own children thrived in this environment, and participated in many activities that I would never have considered. We weren't looking for a mini-school, but rather a place where children could still be children and learn through their play rather than sat at a desk. My children loved the experience and the staff, and left as well-prepared and confident children, more than ready for primary school. What more could you ask? If only their Holiday Club would take stroppy 15 year olds...!

Karen Walker





After enjoying some recent correspondence on the village Facebook page, about the *free* publicity given to the worst pub and shop in the village, I sat down to write this and realised that, after 168 versions of this Royal Oak diary, written every month since January 2007, at a cost to us of about £1,300, I've finally run out of any relevant tosh to say. *Thank the lord*, I hear most of you wail. I've joked recently about applying for the vicar's job—still unoccupied; I've set hares running (so to speak) with my alleged sightings of poisonous snakes in the village (and correspondents have also noted them, but remain tight lipped), and I've had a rant about the developers around Wanborough, (with some correspondence relating to that elsewhere in this magnificent organ of Mog's). I could also mention the visit of Boris's *bête noir*, Dominic Cummings, to Bishopstone at the end of June, but that would be indiscrete. Or is it indiscreet? He was, presumably, lost, and saw a signpost saying The City. Belinda, the villages' Facebook page mistress, keeps taunting me with hints of gossip relating to some activity on polling day in May, but, fundamentally, has never delivered. Please Belinda, please. I'm so short of copy!

I could relate a story about future holidays, a very serious first world problem for lots of us semi-affluent villagers. Back in the mid 60s, when life was a lot different (eg England winning major tournaments) but people still had aspirations, when my mother had mentioned to my father that she was thinking of taking us all

to Filey for a week, he shouted back *Bloody hell Richmal, I work 6 days a week and I'm not going there for my bloody holidays*. Filey, for the record, is a once genteel *resort* on the Yorkshire coast, just below Bridlington from memory. Slightly chilly, lots of fish and chip shops, and gannets and guano. I'm going to find out where it is, anyway, quite soon. Helen texted me the other day, this is 2021 after all, in between helping to tweak the new National Food Strategy for BoJo and co, and said *How d'you fancy a week in a place called Filey, I've found a nice cottage there*, and I laughed back *Yes please, I've always wanted to go ever since father was rude about it in 1966*. I wonder if they've heard of electric car charging up there? Most of my family remain in Yorkshire, and (don't mention it to Helen) I might invite them over to lower the tone for a day or two. Unless, of course, they're fettling their yachts in the Med.

You'll be pleased to hear, though, that any holidays will not clash with the **Eastbrook Farm Grand Day Out**, set for *Saturday 11th September*. As a business that never takes itself too seriously, apart from the serious bits, yet which has survived foot and mouth, BSE, TB, SFN, regular international and national financial crises, plus COVID, and yet still employs about 60 people full and part time, from house-keeping to head jester, we thought some of you might like a closer look at what we do. Whether you wish to test the super kingsize beds, taste the beer, drink MOOSE cocktails, read a good book, scoff our amazing burgers and pizzas, use a wildlife hide

or walk the nature trails, take a farm tour, enjoy our new Scalextric, or simply dance the night away, it's open house from midday to midnight. No booking needed, but we will charge for some of these delights. It ought to be very enjoyable for kids as well. Pip pip

TF

Prospect
Hospice



Enter Our Thanks a Million Summer Raffle and You Could Win £2,000!

Support Prospect Hospice and help raise vital funds to support end-of-life care in the local community by taking part in our Thanks a Million summer raffle. You could win some fantastic cash prizes kindly donated by Imagine Cruising.

- First prize £2,000
- Second prize £500
- Third prize £250

Plus five lucky winners will receive a prize of £50 each

Tickets cost £1 each and can be bought online at:

www.prospect-hospice.net/raffle. They can also be bought in our charity shops in Swindon and north Wiltshire. The raffle continues the hospice's Thanks a Million campaign which aims to raise £1million to cover the funding gap left as a result of the Covid-19 pandemic.

Every pound really does make a difference so, whether you're looking to buy a single ticket or many, thank you for supporting Prospect Hospice in this way.

Online entries close on Thursday 23rd September 2021. For full terms and conditions, please visit:

www.prospect-hospice.net/raffle