

VILLAGENEWS

Ridgeway Rape Fields

May/June 2023



City Ducklings, Ayla Towell

A 'HAPPY AND GLORIOUS' CORONATION

LOTS OF FUN WAS HAD BY ALL

We have a newly crowned King and I've never seen anything like it.

His Majesty would probably have wished for better weather. It's always risky staging an event during Britain's unpredictable springtime. Many found it disappointing that the Royal Air Force's famous flypast was cut short due to low cloud and rain but even so, it was still spectacular seeing the Red Arrows and helicopters, even if it didn't include the Typhoons, Spitfires or Hurricanes.

Watching the ceremony unravel on the television rather than standing in the rain in London, I'm sure that most people felt proud to be British. It was a mixture of preposterous and spectacular with too much to take in. It was a flurry of colour and crazy jewellery.

The Coronation wasn't a celebration for everyone. Many people raised the question of so much money being spent during the cost of living crisis while others shrugged off the pomp. We were all given an extra bank holiday though, which was appreciated by all for a country which needs its spirits lifting and let's face it, we all love an excuse for a good party. I think there would have been far more complaints had all celebrations been thwarted.

Meanwhile locally, there were many villagers waist-deep in Pimms, celebrations and events at both our village halls.

Hinton Parva put on a fabulous spread for their afternoon tea on Coronation Day, Saturday 6th May. Delicious food and drink was shared and a fun time had by all.

Sunday 7th May, saw Bishopstone Village Hall's Big Lunch which included the day's events being shown on the big screen. Everyone got into the spirit and had a fabulous time.

All proceeds went to the Parish Churches.

Weekend pictures from Hinton Parva and Bishopstone village halls...





In March we saved a grand total of 150kg from going into landfill. Our refill station is proving to be popular now people have got used to the products we stock. We are currently doing a survey to see what other products people would like to see e.g. bio-laundry detergent, hand soap and all-purpose cleaner. Our AGM will be held in the Hub on 5 June. This is for members only, so if you would like to become a member and support us, please visit our website www.sustainableshrevenham.com where you will also find details of up and coming events.

The next Repair Café will be on Saturday 24 June 0930-1200. One item only please. In April we mended everything from a birthing pool to a jacket and a plasma ball. Also in April we held our first talk in the Hub by local nurserywoman, Rebecca Brain, when she gave us an enlightening talk on Sustainable Gardening. We now have over 700 followers on Facebook which is very encouraging. Please email us with any comments to sustainableshrevenham@gmail.com



DOG WALKING NOTICE

We are very happy that people want to walk their dogs on this beautiful organic farmland. But we ask that you please take note of the following advice:

Keep your dogs on leads between March and August, to protect the thousands of ground nesting birds that we attract to this place.

You must pick up after your dogs. We have lost more than 20 calves aborted in the past 15 months due to the contents of dog faeces.

Please also ensure that your dogs are wormed regularly according to your vet's advice. Intestinal worms can also damage and on occasions kill unborn calves.

Also, please consider walking your animals on recognised footpaths, bridleways and field boundaries. Try to resist taking routes crossing fields, and avoid trampling crops and grassland. Also avoid livestock, which will always be more curious if you have a dog with you.

Thank you

Eastbrook Farm Partnership



IT'S EASY BEING GREEN

RECYCLING MATTERS

I start with a couple of updates on last month's article. First of all, Bother - now apparently the UK's most highly rated grocery delivery service with very green credentials. I couldn't fault them - and that doesn't happen very often! They really did deliver (free) next day, all as ordered, very competitively priced and are carbon-neutral. I'd definitely recommend and will use again.

Next - our solar panels. We've had them a full month now and in April, comparing our electricity usage with the same period last year, we reduced our monthly spend (based on this year's higher unit prices) by £45.76. Two of the four of us in the family largely work from home so possibly we benefit more than the 'average' family as we're likely to use more electricity during the day and are able to run some electrical items when it is most efficient. Anyway, I'm very impressed and pleased and hope to report back after a full year. If you're considering converting to solar and would like to know more about our experiences or see the installation, do get in touch. It's all very neat, tidy and the battery in the attic much smaller than I envisaged. Infinity Renewables, the company we used through last year's Solar Together Wiltshire scheme, offer a £200 recommendation reward which I'm happy to pass back or donate to the charity of your choice if you end up wanting to use that particular company.

I've recently stumbled across a little reward for being green - if you have a Marks and Spencer's Sparks card and a smart phone. Every time you 'shwop' (i.e. donate) some unwanted clothes (including shoes, handbags, belts, hats, scarves and underwear) or soft furnishings, if you scan the barcode on the side of the donation box you receive a reward - if my case it's been a couple of (large!) packets of Percy Pigs! Even damaged items are accepted as the fibres may still be suitable for recycling.

If anyone finds a local drop-off point for that seemingly Holy Grail

of recycling, blister packs, will they let me know? Fingers crossed that the Shrivenham Hub persuades a local pharmacist to help out in the near future. Jane Faulkes, a Chiropractor and Nutritionalist / Nutritional Therapist from the Highworth Holistic Health Centre sent me some fascinating information on the subject and certainly knows her stuff!



And finally, also in Highworth, if you haven't been recently, a new shop is well worth a visit. It's called 'Weigh It Up', opened in November and is a refill shop and offers lots of other eco-friendly and organic goodies. They have a Facebook page which includes a useful stock list and lots of photos which will give you a good idea of what to expect - they have a very large range! And all with free local parking.

Karen Walker



Bishopstone & Hinton Parva WI



As many of you may know, the late Queen Elizabeth II was a member of Sandringham WI and was in fact their President and always attended the January meeting. The National Federation of WI's asked individual WI's to mark what would have been the Queen's 97th birthday in April.

We were fortunate at our April meeting to be joined by Sarah Troughton, His Majesty's Lord Lieutenant of Wiltshire and a newly appointed Companion to the Queen Consort. Sarah lives in Wanborough and was appointed to the post of Lord Lieutenant in 2012. This was the first time that Wiltshire had a female in this role since the post was originally created in the 16th century. Sarah is His Majesty's personal representative in Wiltshire and her first and foremost duty is to 'uphold the dignity of the crown'.

Sarah explained that she undertakes some 150 engagements a year across the whole of Wiltshire. These may include the planning, welcoming, and escorting of Royal visitors to the county, participating in and supporting British Citizenship Ceremonies and working closely with the Armed Forces. Sarah has also been busy planting trees as part of The Queen's Green Canopy initiative.

Some of our members shared their royal anecdotes. Maggie Simons recounted how she met The Queen at The Royal Albert Hall at the WI Centenary celebrations and found herself telling Her Majesty that she couldn't remove a rolled up banner from the

cushion on which it was placed.....not many people get to say 'no' to the Queen! Clare McGlashan shared her experiences of attending a WI garden party and, as any good WI member would, commented on how delicious the cakes were. Beryl Bell was delighted to attend a garden party honouring the work she had done for the British Legion's Poppy Appeal. Judith Evans's husband Huw was awarded an OBE for his services to education and they were both thrilled that it was the Queen who gave Huw the honour.

Lots of members contributed to a display of royal memorabilia with photographs, magazines, books and Coronation mugs. It was a lively fun evening, and we were very grateful that Sarah could join us to make it even more special.

New members are always welcome. If you are interested in joining please contact: janatwan@icloud.com

Future date:

Thursday 8th June at 7:00 p.m. Annual Handicraft and Flower Show at Bishopstone Village Hall. Everybody is welcome to come along to this and to see the entries in all the different classes which vary from a 'Floral Exhibit in a Kitchen Utensil' to a WI favouritethe Victoria Sandwich. There will be a presentation of various cups and trophies, and a fun auction as well as a raffle. Refreshments will be available and admission is free.



Bishopstone Stores

Last month I had a fabulous day out at the Farm Shop and Deli Show at the NEC, Birmingham. To say that the amount of suppliers that were there was a little overwhelming is indeed an understatement, but I managed to wiggle my way round the show and track down some amazing products that I think you will love! Watch this space (and the Facebook page) over the coming months for some new, exciting delights arriving in the shop!

As spring now feels truly here we have decided to relaunch the wonderful Bishopstone Baps and have a wider selection of take away food to offer you! Just perfect if you are out for a walk, need a picnic, working from home or just want someone else to make your lunch for you. The fillings menu has expanded to give you more choice and you can still make it a meal with our fabulous deal (add crisps and a drink to your bap at a bargain price)! Not only will we make up a fresh bap to order but you can now get a Helens Salad to go, topped with your choice of ham, cheese, egg mayo, homemade hummus or smoked salmon.

As the outdoor kitchen is now in full swing we happily offer you take away pizzas, Monday to Saturday, from midday till the shop closes at 6pm. We always have our favourites: Margherita, Meat Feast and Allotment but do check in with us to see if there are any specials available. Just pop in to order anything from the food to go menu or give us a call so we can have it ready at the time you need it (01793 316150). If you would like a copy of the menu to keep at home just ask or why not take a photo of our blackboard.

Hope to see you soon!

Lynne

BISHOPSTONE STORES... Food To Go...			
BISHOPSTONE BAPS - organic white bap with a choice of fillings:		SALAD POT - our Helens Salad with organic tomato, nuts & seeds	
* HB's Organic Ham with leaves/tomato/slaw	4.50	* Plain Salad (veg)	4.00
* Organic Mature Cheddar with leaves/tomato/slaw (v)	4.50	* Add a toppings:	
* Organic Free-range Egg Mayo with leaves/tomato (v)	4.50	* HB's Organic Ham	2.00
* Homemade Hummus + Roasted veg (veg)	4.50	* Organic Mature Cheddar (v)	2.00
* HB's BLT - streaky bacon, leaves + tomato	5.00	* Organic Free-range Egg Mayo	2.00
* Organic Colswold Brie + Cranberry Sauce (v)	5.00	* Homemade Hummus (veg)	2.00
* HB's Organic Ham + Mature Cheddar with leaves/slaw	5.00	* Organic Smoked Salmon	3.50
* Organic Smoked Salmon with leaves/cream cheese	6.50		
Make it a meal - only 4.50 bap + crisps + drink	6.75		
* Please add £2 to any bap or salad pot to eat here *			
TAKE AWAY PIZZA - available Monday-Saturday midday - 6pm			
* Margherita (v)	10	Please let us know if you have any allergies	
* Meat Feast	10		
* Allotment (veg)	10		
* Ask if we have any specials on today *		Queen Free home pizza base available	

Opening Hours

Monday - Saturday 9am - 6pm

Sunday 9am - 3pm

@bishopstone_stores

@helenbrowningsbishopstonestores

Happy Gardens!

Words and illustrations
by Jane Pearson



Hello! This month's spotlight is on gravel gardens because they really suit the Mediterranean-style-drought tolerant planting that I mentioned in my last article and need little, if any, watering.



Beth Chatto was a great proponent of gravel gardens, and ahead of her time as both a horticulturalist and designer. Her famous Gravel Garden in Colchester was created on a former car park, it's never watered and is a sight to behold. View it at www.bethchatto.co.uk or on my web site: www.janepearsondesign.com/blog where you will find a link.

GRAVEL GARDENS

Let's jump straight into the pros and cons before you decide whether this style of garden is right for you!

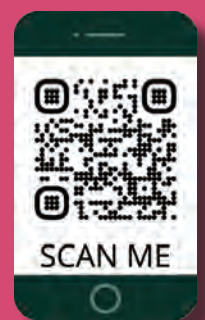
- On the plus side: Gravel gardens (once established) are low maintenance, need little watering or care and encourage wildlife. They really suit a sunny, well-drained spot, especially if it has sandy or gravelly soil that hasn't been improved. This could be the planting solution you're looking for; think of those awkward spots full of builder's rubble, neglected rockeries or perhaps close to a house wall where little grows, or where the removed base of an old shed or patio used to be, and they attract lots of pollinating insects. Plants such as Cistus, Santolina and Phlomis thrive in gravel and provide an abundance of nectar and pollen for our visiting insect friends.
- Gravel gardens can be a bit needy for the first year or two. They need care until the plants are established and have grown large enough to suppress other unwanted plants, so you will need to weed for at least the first growing season, even with the use of landscape fabric (more on that to follow). They're also not suited to rich or clay soils or areas with a high-water table.
- The plants can sometimes have a mind of their own, so if you like everything ordered, this style might not be for you, though it's fascinating to watch where they decide to travel to!

It's easy to make a gravel garden:

- Choose a sunny spot with well-drained soil.
- If you don't want your plants to self-seed lay landscape fabric over your soil and cut crosses to insert each plant root ball (without doubt this method is tidier, but here's the spoiler, given time, weeds will still germinate in the gravel but your specimen plants can't multiply to crowd them out, which seems a shame). I'm currently in the process of pulling up inherited membrane from our own front garden to let everything spread.
- Order your gravel: Bulk bags hold around 1 cubic metre which should cover about 20 square metres laid at 5cm depth.
- Choose local gravel, it's often cheaper and is more likely to match your surrounds.
- Visit my web site for a selection of suitable plants or call me to have bespoke plant lists with care instructions made - just for you - Then plant up and water sparingly until everything is established, sit back, relax, and enjoy the show!

GRAVEL GARDEN HINTS AND TIPS

- To stop small new plants becoming swamped by gravel, plant them into a small mound to raise them slightly above the gravel's level.
- Avoid using limestone chippings if you want to grow acid-loving plants.
- To blend in nicely, try to match the gravel's colour with other paved or stone structures in your garden.
- Choose medium rather than fine grade gravel (20mm or more) it's easier to walk on and cats won't mistake it for kitty-litter!



www.janepearsondesign.com/blog

MAY GARDENING TASKS

At last spring arrives! By mid-March frequently sunny days provide an opportunity for a range of gardening tasks and it's time to get busy preparing seedbeds, sowing seeds, cutting back winter shrubs (if you haven't already) and generally tidying up around the garden.

- Check for nesting birds before clipping your hedges.
- Lift, divide and replant overcrowded clumps of daffodils and other spring flowering bulbs.
- Mow lawns but please consider leaving some areas uncut for wildlife.
- Open greenhouse vents and doors on warm days.
- Get your hoe out and hoe off weeds, especially in your new gravel garden!
- Earth up potatoes and (note to self!) promptly plant any remaining.
- Hold off planting out summer bedding until the end of May, however tempting the sunshine seems, it's still possible to have late frosts.

NO MOW MAY

Will you take part in Countryfile's "No Mow May" and see your lawn spring to life with flowers, bees, and other pollinators?

The Countryfile web site suggests that "Gardeners, councils and landowners across the UK are gearing up for No Mow May, letting their lawns, verges and grasslands grow freely to give nature a boost. It's not too late to take part this year - any break from your routine mowing will enable bees, butterflies, and other wildlife to get a much-needed boost this spring. All you have to do is resist the urge to cut the lawn during the month of May- Last year's results showed that gardeners who took part reported up to 250 species of plants, including wild garlic, wild strawberry, orchids and the meadow flower snakeshead fritillary, flowering within the grasses."

Our lovely editor might even print your 'No Mow' photos?! Try mowing pathways or glades through your lawn and then put your feet up and leave the rest to grow for a few weeks. It's not often you have an excuse not to mow and the possibilities are endless!

READERS QUESTION TIME

We have two questions this month. Thank you and please keep them coming!

Q1: "Can Herb Robert (geranium robertianum) and Goose Grass/ Cleavers (gallium aparine) go in the compost bin? We don't have a green bin".

Quick Answer: Yes!-if you want more weeds, No!-if you don't want more weeds. **Long Answer:** It depends on the weed's life cycle (annual or perennial), when it was cut, what you're using your compost for and what type of compost system you have! Your question has given me a couple of future post topics, thank you!

There's good reason behind my grandad's old habit of leaving his cut or pulled weeds in the sun. The warmth and lack of moisture dries any annual flowers and prevents further seeds from growing and spreading, he usually burnt them on the bonfire after, but times have changed and bonfires are frequently unwelcome or banned and often replaced with green bin collections.

Some annual weeds are ok to compost if they're not in seed so the two weeds you mentioned might be ok at the moment - if you can catch them before they flower and set seed or you have a very hot compost bin (or green bin) to put them in.

Weed wonders!

Herb Robert has explosive seed pods, scented foliage and loves shady areas. It's self-pollinated by hoverflies.

Goose grass or cleavers can make 300-400 seeds per plant which may persist in the soil for up to 6 years! Their sticky leaves are a favourite food of many butterfly and moth caterpillars including the beautiful hummingbird hawk moth.



Herb Robert



Goose Grass



Readers Question 2 >>

Green Fingers



Bishopstone & District Gardening Club



At our meeting in April we treated our members to a Wine and Cheese Evening, much enjoyed by all including our speaker Paul Green from Greens Leaves Nursery in Newent, Gloucestershire. They specialise in unusual and rare plants, all raised in the nursery and Paul brought along a large selection to show us. He explained the virtues of each variety, its size, shape, colour, care, hardiness and the best location to plant it.

We also learned why so many of us lost plants during last winter. It was not so much to do with the actual temperature as the rapid change from mild (14 degrees) when they were still growing, to well below zero (-10 degrees) for a sustained period. Apparently those evergreens with larger leaves are more likely to be affected.

Not surprisingly many of us went home with a selection of plants fill those gaps and Paul was happy with a much lighter load in his van at the end of the evening!

DIARY DATES

Wednesday 14th June 7pm Bishopstone Village Hall:

Alan Holland from TWIGS Community Gardens in Swindon will be talking about their work in creating a resource to give people who experience mental health problems to gain confidence and self esteem.

Wednesday 28th June. Trip to Rooksnest, Lambourn

Woodland: A 10 acre traditional English garden includes rose garden, herbaceous garden, pond garden and herb garden.

Something for everyone. Entry £6 Travel by private car.

Contact: Marion Peck, 01793 791 001

READERS QUESTION TIME cont.

Q2: I have five rose bush cuttings that were taken late last year. Should I split them up and repot, or leave for another year in the pot, or plant out? I think I have roots at the bottom of the pots.

Answer:

They're looking good! I suggest gently removing them from the pots once the risk of frost has passed (towards the end of the month) and see if it's possible to gently separate each plant without damaging roots. Replant the weaker ones into small individual pots and grow on for another month or two, but the larger ones will be fine to plant out in your garden now in a sunny spot. Make sure you dig a deep enough hole and back fill with plenty of organic compost and water well through the growing season. Good luck and let me know how you get on, I'm looking forward to seeing your first blooms!

Happy Gardening! And remember, if you need further advice, please don't hesitate to contact me to book a friendly Flower Hour visit. Next month: Green roofs, or maybe Weeds or maybe Compost systems - what's your pleasure?

07811 367320

janepearsondesign@icloud.com

The Lynchetts, Icknield Way, Bishopstone

www.janepearsondesign.com/hints&tips



MOWERFIXER

maintenance/repair service
mowers, hedgecutters
trimmers etc.
for the Ridgeway villages

New & 2nd hand
garden machinery for sale

0789 979 1833
doug@mowerfixer.co.uk

Jane Pearson Design

Gardens & Landscape
Local Landscape Architect & Garden Designer

Design-Planting-Consultation
Project Monitoring

Creating joyful gardens & landscape
infused with your personal style & requirements.

Let's make plans!
+44 7811 367320
www.janepearsondesign.com
email
janepearsondesign@icloud.com

Pre Registered Member of the
SOCIETY OF GARDEN DESIGNERS

Ask Fanny



Notes and queries from readers, a response from our local agony aunt...

Dear Mrs H

I read with interest your response to a previous question about the hostile barbed wire erected across a footpath at the west end of Bishopstone. I have experienced the witch! Late one autumn afternoon, while trying to direct my skittish race horse through a gap in the wall at the top end of the walk by the Ridgeway, this old crone appeared from nowhere and bawled at me. She told me in interesting language that no-one was allowed to have a good time on this patch of land that she had been destined to patrol since a wolf had given birth to her in 1745. I'm not going to risk it again.

Mr L, Hinton Parva

Dear Mr L

Thanks for shedding more light on this mysterious creature. I had no idea she was a wolf-child, which of course explains nothing. I've done a little research into permissive footpaths and I'm not, currently, sure that she is following the letter of the law, never mind the spirit. More on this to follow.

Thanking you, Fanny

Dear Fanny

Your column last month mentioned the presence of a male stripper in the village, even if only for 24 hours, which caused small ripples of excitement in our quiet household. Did you ever discover more? My girls and I often have dull nights in while the weather is so awful, and wondered if you had a contact detail?

Mrs S, Farm Court

Dear Mrs S

Sadly, on this occasion I am bound by an oath of discretion. I have it on good authority that he was a big, big success, and would almost certainly live up your evening. I do have some discreet photos which are available for £1 each. Very good luck in your quest for easy entertainment.

Fanny

Dear Mrs Hole

Potholes, potholes, all over the roads. Is there an end in sight? I read somewhere that the cost of repairing all the potholes in Britain would be something like £15 billion, so what hope is there of avoiding a ripped tyre on the B7763 between Bourton and Hinton Parva? Nil!

I am pretty cross

Mr F, Bishopstone

Dear Mr F

I understand. There's a gruesome pothole (similar to the Grand Canyon in Colorado; when I went back to peer into it, I couldn't see the bottom) just on the bend towards Bourton as the road moves right, and it looked just like a large puddle as I casually careered through it last week. My car ground to a screeching halt just after the turn to Shrivenham, and two tyres were lost. Two or three villagers came past me soon after but when they realised it was Fanny, they gave a two fingered salute and headed off to their Icknield Way homes.

Yours slightly poorer

Mrs H

Dear Fanny

Were you aware that a picturesque village amenity has had the Joni Mitchell treatment? Well, not quite paved and a parking lot, but an unspoilt country lane has now been inappropriately gravelled. The increasing suburbanisation of our village continues and the start of the Ridgeway Circular Walk now involves struggling through thick gravel, never easy in stilettos, dragging a reluctant dog more used to a natural feel beneath it's feet. Has Hyacinth Bucket relocated?

Mrs P. Off

Dear Mrs P. Off

Thank you for your very clear observations on gravel and suburbanisation, and indeed for the glorious photographs of said gravel that now decorate my dressing table. I did once try to walk the whole of the Ridgeway Circular in my infamous pink stilettos (and a very short skirt of course) and at every step I prayed for some lovely gravel, instead of the muddy minefield that afflicts the early and later parts of the route.

If I was in your shoes, as it were, I'd be more concerned about the suburbanisation creeping into how people live in these villages, especially the tarmac-ing and concrete-ing of spaces to park their monstrous vehicles, with the subsequent loss of water absorbing grass and earth. I wholeheartedly love the new gravel, and will be using it as much as possible as I raid the old watercress beds below it—also tricky in stilettos.

Yours in total disagreement

Mrs H



Mrs F Hole will continue to be delighted to answer any reasonable and unreasonable queries from readers. Email me (Mrs F. Hole) with any queries: BishopstoneEditor@gmail.com



Just to reassure those of you slightly snuffy about my nom de plume, Fanny Hole was a vicar's wife in Devon in the 1800s, and was one of the first so-called agony aunts according to records in the Exmouth parish. Unbelievably, it was a fairly common name at that time and only subsequently became a source of immature giggling.

DICKIE'S diary



At last, some modest warmth over the weekend April 13/14. It seems I have been in gum boots for ever and they now leak from my digging exertions. My trusty stainless steel spade needs treads to prevent this and the tool, though too late, has gone to those nice people Roy and Steve at R and P engineering who have agreed to my wishes. It would be foolhardy to throw the boots away just yet. This weekend has seen the welcome return of chaff chaffs. I hear them everywhere and I have also spotted my first brimstone butterfly. Wheat planted three months ago has at long last deigned to show and the spring barley planted in early March is also emerging.

The trouble with writing notes like these are they are all out of date by the time they are read so, ever the optimist, here's my wish list of what I hope to see by end of the month.

Silage grass up to hide a hare, cereal crops tillering to hide the bare patches, cattle out enjoying some sunshine with enough to eat. Ewes and lambs finding enough young grass at last without needing a hay top-up. A rise in the milk price to encourage the remaining milk producers who have had an expensive winter. For us, and there are many in the same boat, the oil seed rape crops changing seriously for the better, from their present sorry state. Parts of the fields even

now are green and over a foot high whereas other parts are nearly non-existent having been grazed by pigeons and deer desperate to survive the cold winter. There's a lot of catching up needed. Later on, a lovely end of May early June would be nice to assist the pheasants and partridges bring off some good natural broods with sufficient insect life to feed their chicks. A settled spell at this time also combats growth later of the disease septoria, a yield reducer on the wheat ears.

On an early misty May morning I should like to hear the call of the cuckoo once more. Before long our children in this area won't be able to recognise this busy haunting song drifting over on the wind from a quarter that is hard to identify. But before this, martins, swallows and the ever graceful swift swooping about and resting on the wires. And to cap it all, the barn owl nesting in our artificial box and finding enough voles and mice in the margins to bring off several owlets.

MAY PUZZLE: coffee time cryptic

Across

1. Musical state (8)
6. Snake grasped in the middle (3)
9. More or less in the vicinity (5)
10. Warm fowl for a pagan (7)
11. Enjoy Kelly being compared (7)
13. Astray on the ocean (2,3)
14. US raid ordered by Persian leader (6)
15. Sea-food rascal found on island (6)
19. Doctor joining American Medical Association in theatre work (5)
21. Space - it could be germ-free (7)
22. Girl getting a game before the end of August (7)
23. Elegant but impudent (5)
24. Regret having cruel heart (3)
25. Musical roundabout (8)

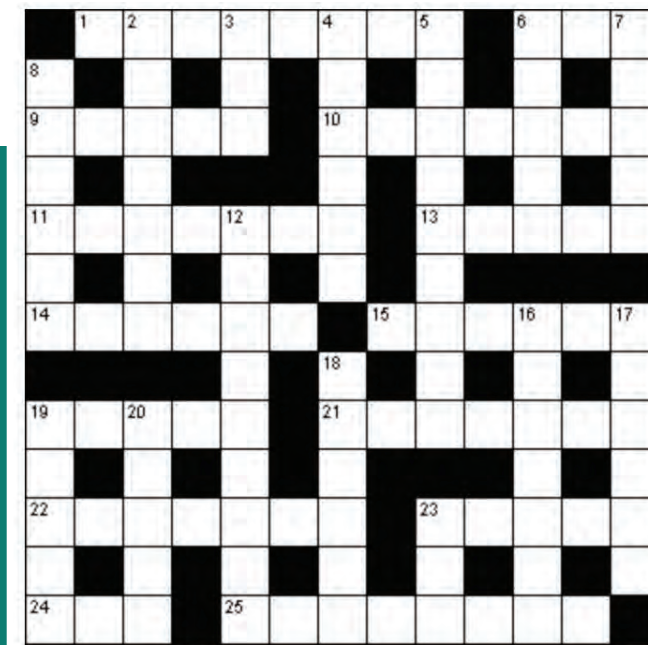
Down

2. One who disparages a door attachment (7)
3. A National Trust insect (3)
4. Skin found in compound outside Holland's capital (6)
5. A fall of snow or lava he can fix (9)
6. One of the musketeers muffed a shot (5)
7. Animal seen in police car (5)
8. Everything's immoral about song (6)
12. Ale curing outbreak of nervous pain (9)
16. Gas - the name is peculiar (7)
17. Provoke fashionable quote (6)
18. Assault a baseball player (6)
19. Refuse to admit beard is unkempt (5)
20. Incidental remark made by a team (5)
23. In this way university gets a bit of money from France (3)

APRIL WINNER!

Congratulations Pete Walker for your crossword entry. I had a feeling you'd win at least once!

Please visit Lynne at Helen Brownings's shop to collect your voucher.

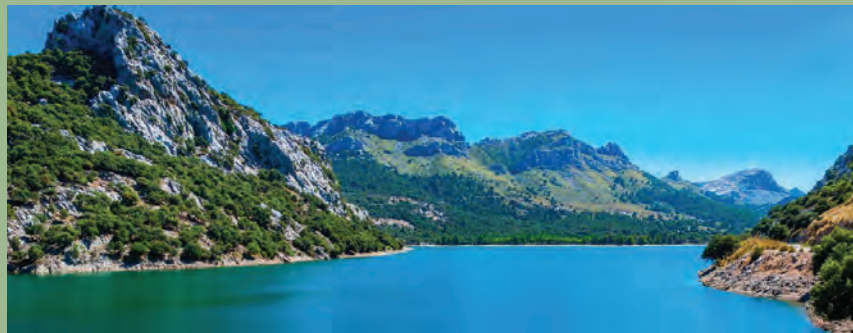
Email: shop@helenbrowningsorganic.co.uk

Be in it to win it!

Please submit your completed crossword by the end of each month either by foot or by email to Lynne at Bishopstone Stores, who will drag a winning name from a hat if more than one of you is bright enough to complete it. When you read your name in the next edition to say you've won, you can nip back to the shop to be presented with a nice shiny voucher for £10 off your bill at the pub or in the shop.



Cycle Route No.6 – Soller – Sa Calobra - Soller



Distance: 48.88 miles
Elevation: 7148 ft
Average Cycle Time: 5 hours



This month's cycling route is a Balearic Island treat, as I'd like to share my favourite ride on Majorca's majestic Western Coast, home now of all the professional teams' autumn sun training camps.

The ride set off from Soller. The authentic town of Sóller sits in the heart of the 'valley of oranges' or 'valley of gold' as it is sometimes known. The town of Sóller in the north west of Mallorca became wealthy because of the valley's abundant citrus groves. In the 19th century, when the area was isolated from the rest of Mallorca by mountains, the oranges were shipped to France from the nearby west coast Port de Sóller. Many locals went to work in France and returned – their fortunes duly made – to build some of the handsome Modernista properties that grace this town today.

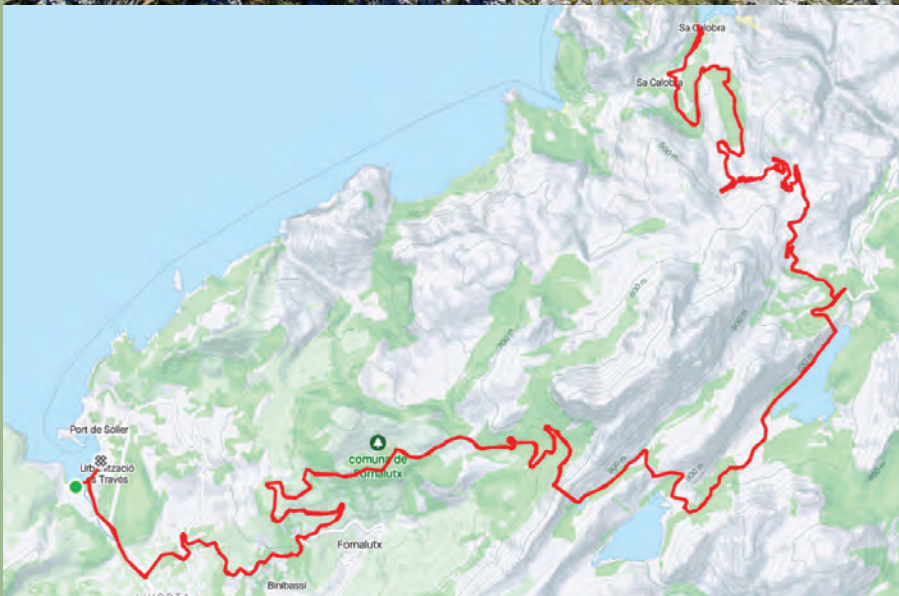
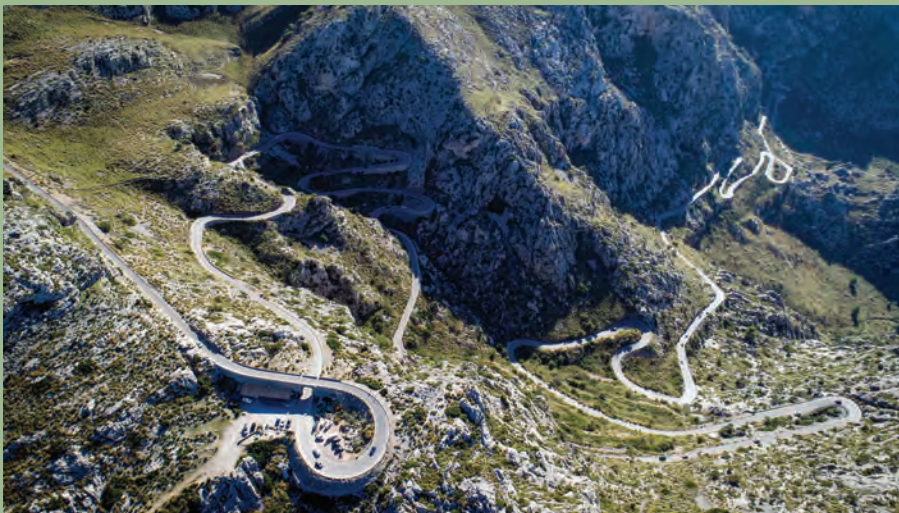
Leaving Soller you climb immediately in a northerly direction taking on the Cat 1 climb of Puig Major. Cycling Puig Major probably offers the toughest ride in Mallorca. It's a great climb, over 14 kilometres, and it is the only "Hors Catégorie" climb on the island. Cycling Puig Major is a must ride on every road cycling holiday in Mallorca. Puig Major is also the highest point you can ride in Mallorca. There only road higher than this is a military road which you cannot access when cycling Puig Major. Puig Major is the highest peak in the rugged Tramuntana mountain range. It reaches a considerable height of 1,436 meters but the paved snaky road that starts at the town of Soller near the coast only summits at 864 meters above sea level, with over 20 gorgeous hairpins on the way. The next highlight on route is a

breathtaking blue lake, Gorg Blau. Gorg Blau is an artificial reservoir, located in the valley between Puig Major and Puig de Massanella. Since 1971, it has been used as a drinking water source for the city of Palma and the surrounding areas. All though man-made, Gorg Blau looks like a natural wonder and is a perfect location for refreshments.

The next challenge en-route is my favourite cycle climb of all time, Sa Calobra. The Sa Calobra climb is Mallorca's most famous, spectacular and, arguably, toughest cycling climb. Sheer limestone cliff faces reach down to the turquoise sea. Weaving through the craggy lunar landscape, a feat of engineering and a work of art: a looping grey squiggle of silver tarmac that entices cyclists from across the globe. The Sa Calobra road balances beauty with brawn. It's one of the most picturesque routes in Europe, but it demands serious mental toughness since you have to ride all the way down it before you ride up it. Once you're at the hamlet by the sea, resembling beach scenes from James Bond films, you have several choices of amazing restaurants. The biggest challenge is to enjoy your fantastic meal as you look upwards and stare at thousands and thousands of feet of ascent ahead of you. While its out and back nature means it doesn't have historical race pedigree, it's not without its famous fans: Sir Bradley Wiggins trained here in preparation for his 2012 Tour de France victory.

After tipping the waiter and climbing back on your bicycle, simply reverse your journey back to Soller, where you can chill out and celebrate a brilliant days riding.

Lycra Lil 



The Gadgeteer

From the A- Z of Gadgets A is for Avocado

Scoops to slicers, mashers to savers, there will be a gadget for you!

Avocado Pears, as they were first called, were introduced to Brits in the 1960's by Mr Sainsbury and gained ubiquity following marketing campaigns by South African growers in the 1990's. More latterly, the promotion of the health benefits of avocados in Californian smashes and smoothies, and the introduction of South American guacamole to weekly shopping lists, meant that marketers could seize the opportunity and promote the benefits of the 'superfood'. Gadgets are always present when exotic fruit and vegetables are involved and with the relative novelty of the avocado this creates an instant demand. Gadgets are designed to de-mystify and simplify the preparation of such fruits. They demonstrate kitchen authority and competence. Own a Joseph Joseph Avocado Slicer and you are clearly top of your kitchen game, unless you're not actually a gadget person of course! You mean you don't need a masher? You can use the back of a fork, and a spoon to scoop the ripe flesh - the trick is to firstly source a ripe avocado. To prepare: place the avocado on a board and slice the hard skin around the waist, through to the stone in the centre, joining the cut on the other side at the full orbit of the pear. Then simply twist the two halves. One should come away from the stone. Place this to one side. The will remain in the other half. utmost care whack a sharp knife into the stone – it should become firmly lodged – hold the pear and twist the knife and the stone is easily removed. Here you may simply scoop out with a spoon to prepare your recipe. But if you want the neat fan presentation of a Fanny Craddock recipe for avocado vinaigrette, a gadget



could help! With the stone removed, The Prep Works from Progressive Slicer has a sharp scoop and thin wires to scoop and slice in one movement. There is an Oxo Good Grips version and the Joseph Joseph too. Scoop from the widest part of the flesh down to the skin, pull the scoop back to slice and remove the pulp in one go. There are plenty of storage solutions for cut halves of avocados, check out the Avocado Keepers in Waitrose or Food Huggers. Drizzle with lime juice, replace the stone and cover with cling film. Better still use them up and don't store cut avocados!!

cutter around the egg. The result is a perfect cut. Back in Claridge's, the head chef may use these to decap raw eggs in order to clean the shell and serve a mousseline or fancy foam. Egg Mate available from Fenwick £6.50. Egg Clacker stuffthekitchen.co.uk £11.50

The Gadgeteer

Joke of the month

An Englishman, an Irishman, a Scotsman and a Welshman were captured by the Iraqis. The commander grants them one last request before they are to be shot.

The Welshman says, "I would like a 1000 piece male voice choir, singing land of my Fathers."

The Scotsman says, "I'd like 1000 Pipers playing flower of Scotland."

The Irishman says, "I would like 1000 dancers tapping out the river dance."

The Englishman requests, "Please shoot me first!"



Send us your
**HILARIOUS
 JOKES!**
 Good or bad. Email:
**BishopstoneEditor
 @gmail.com**

Inside the Peach Pip

The Boy with Flowers in His Hair, by Jarvis

One for the small children. This is a wonderful picture book, gorgeously and delicately illustrated, celebrating friendship and encouraging acceptance of differences. The hardback edition has a paperfeel embossed cover which brings the flowers to life and is soothing to touch. It's a beautiful piece of art that I use to brighten up my bookshelf.

Favourite quote: 'He's sweet and gentle, just like his petals.'

Other news

Please accept my apologies for the cancelled bookshop dates in April. I thought I could do everything that week and not burn out, but it turns out I couldn't! Thank you all for your understanding.

It has been a struggle finding an alternative weekend in the near future when both myself and the hall are available, so the next dates will be a little way away, as follows:

Saturday 17th June 12-5pm

Sunday 18th June 12-3pm

This will be my last bookshop for a while, as I am moving away to Edinburgh for another adventure at the end of July. Since I will be back visiting the village reasonably often, it is possible that I might continue to open the bookshop every now and again (twice a year, perhaps), but have not decided yet. For now, I want to thank everyone who has come along and supported the project, and especially those who have kindly donated fantastic books to help me keep it going. It has been my pleasure catering for your bookish needs, and I will hopefully be back to do it again soon.

See you in June!

Pip pip, Anna



CHURCH NEWS

A Letter From The Vicar

Dear Friends,

The excitement and splendour and solemnity of the Coronation weekend will stay in our memories for a long time. The promises and vows our King, Charles III, has taken are immense, powerful and wide ranging. It is no wonder that they are taken in a Christian place of worship, which has seen the Coronation of many Kings & Queens over the years.

The King can only keep his promises and vows with the help of God, who is at the centre of his life, as it was for his mother, Queen Elizabeth II. King Charles now takes her place as the Head of the Church of England.

Let us ensure that we continue to pray for him and Queen Camilla – for the strength and stamina to carry out their duties with integrity, love and joy.

In our Benefice we look forward to celebrating the festival of Pentecost on 28th May at St Swithun's Church – a festival often called the Birthday of the Church. This recalls the Holy Spirit descending on the disciples and giving them the gifts, they needed to continue Christ's work.

Then the following week, on 4th June, we welcome the Bishop of Bristol, the Rt Revd Vivienne Faull, to celebrate the completion of the work on St Andrew's following the theft of the lead roof in February 2022. This is Trinity Sunday, which reminds us that God is the Father, the Son and the Holy Spirit. God is three and God is one. It is a good time to remember that the 4 churches of our Benefice also need to work together. We have a common purpose and gifts to share with each other – to encourage and strengthen each one of us as we seek to live out Christ's commandment to love one another.

With love and prayers

Sandy



Church Services in the Benefice

full details on www.achurchnearyou.com

Day	Date	Time	Venue	Service
Sun	14.05.23	10.30	All Saints'	Easter 6 Rogation Sunday
Sun	21.05.23	10.30	St Mary's	Easter 7
Sun	28.05.23	10.30	St Swithun's	Pentecost Sunday
Sun	04.06.23	10.30	St Andrew's	Trinity Sunday - <i>The Bishop of Bristol will lead a Service of Thanksgiving for the Completed roof work of St Andrew's. All welcome to the service and the refreshments after.</i>
Sun	11.06.23	10.30	All Saints'	Barnabus
Sun	18.06.23	10.30	St Mary's	Trinity 2

All dates and times are submitted to the Editor.

PLEASE SUPPORT WANBOROUGH CHURCH. Make a donation in aid of the New Roof

More information about this is available from the PCC Treasurer: E-mail: standrewswanborough.treasurer@gmail.com

Donations can be made by cash or cheque which should be made payable to "PCC Wanborough St Andrews No 1"

The PCC Account details for online banking are: Sort Code 30-98-41 and Account No 00316459

Please donate by **Gift Aid** if you can.

Using this tax favourable method, the Roof Project will be able to claim back from HMRC 25p for every £1 donated.

Thank you!



BISHOPSTONE & HINTON PARVA VILLAGE FETE

CALLING ALL VOLUNTEERS!

We are looking for people to help organise our village fete on 9th September 2023.
This year, we may combine it with The Gardening Club Produce Show. Location TBC.

If you would like to help out, run a stall, or find out how else you can get involved in this lovely social event, please contact Christine Thomas **a.s.a.p. (preferably by the end of May)**
 by email: littlecot2010@hotmail.co.uk
 or via Whatsapp/phone: 07789 414147

THE THIRD NORTH WESSEX DOWNS WALKING FESTIVAL

JOIN US!
2nd - 11th June 2023



This year's North Wessex Downs Walking Festival has 27 walks on offer across the AONB with opportunities to seek out wildlife, history or culture, visit a farm, follow a nature trail, picnic with the family, create an art journal, or simply soak up the views from the top of the downs. Many walks are free but booking is essential.

The festival is a great celebration of the top-class walking country, stunning views, heritage and culture of this protected landscape. Walk leaders are all knowledgeable and welcoming and looking forward to bringing alive some of their favourite places for you.

There are family-friendly events, energetic hikes as well as gentle ambles. Go to northwessexdowns.org.uk/walking for more information and to book. Be quick as some events are booking up fast!

The **North Wessex Downs Area of Outstanding Natural Beauty (AONB)** covers 668 square miles (1,730 sq. km) straddling the four counties of Berkshire, Hampshire, Oxfordshire and Wiltshire. It is the third largest AONB in England. The landscape was given protected status by law in 1972 to conserve and enhance one of the largest tracts of chalk.

The **North Wessex Downs AONB Partnership** was established in October 2002 to co-ordinate management of this protected landscape. The Partnership works to an agreed five-year management plan and oversees the work of the small professional AONB team.

For more information please contact:

Ann Shepley, Communications Officer, North Wessex Downs AONB

E: annshepley@northwessexdowns.org.uk | Office: 01488 685440 | Mobile: 07810 637387



Calstone Down walk and Lansdowne Monument.
Credit: North Wessex Downs AONB

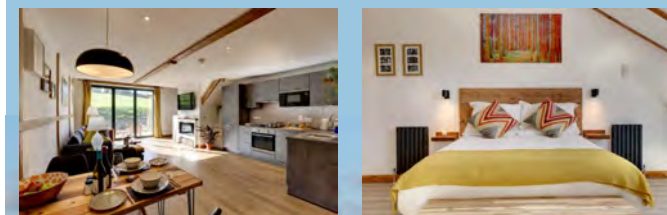


North Wessex Downs Walking Festival 2022 Jones Mill

THE OWL BARN

A MEMORABLE STAY IN HINTON PARVA

theowlbarnwiltshire.co.uk



Wanborough Bowls Club

Hooper's Field, Rotten Row, SN4 0AN

Why give bowls a go?

- It's a fun sport and good for your health
- You don't need any experience
- It's an opportunity to get outside in the fresh air in beautiful surroundings
- We are a friendly, social club
- There are lots of opportunities to play, friendlies and more competitive matches, both within the club and against other clubs.

You are welcome to come to visit, borrow our equipment and have a go with no commitment to join. Email or call the Hon. Secretary to arrange:

info@wanboroughbowlsclub.org.uk or 01793 614861

If you do decide to join us, adult membership is just £40 for the first year.

The green will open on Saturday 8th April (weather permitting) and then every day until the end of September. There's lots of parking on site.

wanboroughbowlsclub.org.uk



CHAIR'S REPORT 2022-23

It is my pleasure and duty to report on the past year's work of the Parish Council.

Through careful management, the Parish Council has kept the Precept unchanged for the 10th year, despite the unforeseen election expenses which made a large dent in its reserves.

The Parish Council has purchased two new defibrillators for the community and is grateful for the help of volunteers who have installed them at Hinton Parva village hall and Russley Park.

The Parish Council has been delighted to offer support to the excellent new village newsletter, also produced by willing volunteers, which is once again being delivered through our doors. We have continued to contribute to our local churches graveyard maintenance costs, and to provide grants to both village halls.

Councillors are pleased to have been able to help Bishopstone School, who are once again making careful use of the island for forest school activities, and to have had the children's help with litter picking. The children also joined councillors for a ceremony of dedication for the new oak tree at West End Lane, naming the tree "The King's Oak" in honour of the coronation of King Charles III.

The Parish Council has organised two litter picking events this year, and is very grateful for the community's ongoing support. Councillors have been swift to report and act on anti-social activities such as fly-tipping, hare-coursing, drug-related incidents and damage to public and private property. The police have responded to our requests for a more prominent police presence in the community, and now carry out regular patrols to the Ridgeway as well as supporting our Community Speed Watch team. The Speed Watch team would welcome additional volunteers to enable more frequent patrols.



Val Brodin
Chair
Bishopstone
Parish Council
May 2023

We are grateful for the support of our ward councillor and Swindon Borough Council, who have been very responsive to our requests for help with felling dangerous trees, cleaning flooded gulleys, repairing fingerposts and installing or replacing important road signs. The Parish Council continues to liaise with SBC over potholes, road markings, speed limits and planning matters. Councillors have requested a 20mph scheme for the heart of Bishopstone by the school and pond, which is being considered by SBC. We have also asked for the village 30mph limit to be extended to cover the whole of Body Horse Hill, Hinton Parva.

The Parish Council has kept its paths and hedgerows clear and tidy, and provided more dog bins, which are now emptied weekly in Bishopstone.

Although the provision of broadband is not the Parish Council's responsibility, councillors have worked hard to encourage service providers to bring fibre to our villages. Back in the summer, we were able to convince Openreach that there was sufficient interest for a Community Fibre Partnership to be viable. For a very short window of time they opened an online pledging site for residents to take advantage of a government funded scheme for isolated and remote areas. The Parish Council ensured that every eligible household was made aware of this opportunity and, though leafletting, door knocking, emailing and phoning the relevant residents, we ensured that enough voucher pledges were made for Openreach to claim government funding for the addresses where

no provider is planning commercial installation. The latest update confirms that Openreach is still on track for installation by April 2024. If you pledged, you will be notified individually when it is time to commit your voucher.

This year, we lost two councillors to the lure of more exotic overseas opportunities, Cllr Helen l'Abbate and Cllr Andy Clark. We thank them both for their service to our community and wish them well in their adventures. The Parish Council welcomed two new members, Cllr Lucille McGrath, elected in June 2022, and Cllr Steve Bell, co-opted in April 2023.

During this year, the Parish Council discovered there are now more children resident in the villages than at any time in memory. In the year ahead, it would be good to see more facilities and activities for children. Volunteers wishing to start any such activities are invited to contact the Parish Council to see what support we can offer.

In the year ahead, the Parish Council will continue to work hard in support of our residents and champion the community's interests. Councillors look forward to meeting residents old and new at village events and occasions. Residents are welcome to attend and observe any parish council meeting, which always starts with a public question time. You may contact any councillor with ideas, feedback or complaints, or contact the clerk by phone on 07913 819422 or email clerk@bishopstoneandhintonparva.org

In closing, I would like to thank my fellow councillors for their teamwork, and everyone who has played a part in the life of our parish over the past year. Special thanks to the clerk, Jaine Blackman, for her efficient and cheerful service, and local resident Paul Bailey, who kindly continues to act as our internal auditor and an invaluable source of financial expertise to the clerk and councillors.

DON'T LEAVE DOG MESS IN OUR FIELDS

Apart from being against the law - even in healthy well-kept dogs their mess contains parasites and toxins that are harmful to wildlife and humans and despite being washed away by rain can remain dormant in the soil for years.

These parasites and toxins can cause: blindness in children (Toxocariasis); abortions in sheep (Sarcocytosis); abortions in cattle (Neosporosis); and contamination of groundwater and waterways.

Leaving your dog mess is antisocial, dirty, inconsiderate and selfish. Respect the countryside and the landowners who allow us the privilege of walking our dogs on their property. Please pick up your dog mess!

BISHOPSTONE PARISH COUNCIL

Ms Jaine Blackman (Clerk)

Phone: 07913 819422

Email: Clerk@bishopstoneandhintonparva.org

Mrs Val Brodin (Chair)

Cllr.valbrodin@gmail.com

Mr Ian Thomas (Vice Chair)

Cllr.ianthomas@gmail.com

Mr Julian Cooke

Cllr.juliancooke@gmail.com

Mr Nigel Crisp

Cllr.crisp@gmail.com

Mr Doug Stevens

Cllr.dougstevens@gmail.com

Mr Tom Green

Cllr.tomgreen@gmail.com

Mrs Gill May

Cllr.GillMay@gmail.com

Mrs Lucille McGrath

Cllr.lucillemcgrath@gmail.com

Mr Steve Bell

Cllr.sbell@gmail.com

PARISH COUNCIL MEETINGS 2023/24

5th June **Bishopstone**

3rd July **Hinton Parva**

7th August **Bishopstone**

4th September **Hinton Parva**

2nd October **Bishopstone**

6th November **Hinton Parva**

4th December **Bishopstone**

2024

8th January **Hinton Parva**

5th February **Bishopstone**

4th March **Hinton Parva**

1st April **Bishopstone**

Meetings begin at 7.30pm. Late changes are shown at bishopstoneandhintonparva.org/parish-council/ and on the notice boards. Members of the press and public are welcome to attend.

Useful Information

Swindon Borough Council: Reception Premier House 01793

465055/465056; **Civic Offices** 01793 463668; **Wat Tyler House**

01793 463725

For problems with waste collections call Streetsmart on: Monday to Friday 8am-8pm 01793 445501; all other times 01793 466453

Report fly-tipping or pot-holes to SBC: swindon.gov.uk/my-account

Wiltshire Police non-emergency number (less urgent than 999): 101

Borough Councillor Gary Sumner - GSumner2@swindon.gov.uk

PARISH COUNCILLORS' KEY RESPONSIBILITIES

Finance Nigel Crisp/Lucille McGrath

Footpaths and Highways Julian Cooke (Hinton Parva) Ian Thomas (Bishopstone)

Pond & Island Doug Stevens

Hinton Parva Village Hall

Bishopstone Village Hall Tom Green

Hinton Parva Charities Peter Cooke (PC nominee)

Bishopstone United Charities Doug Stevens, Christine Thomas (PC nominee), Laurie Manktelow (PC nominee)

Trees Julian Cooke (Hinton Parva) Ian Thomas (Bishopstone)

Russley Park Liaison Nigel Crisp

Responsible Financial Officer Jaine Blackman (Clerk)

Planning Ian Thomas/Tom Green

Website/IT Nigel Crisp

Policies Gill May

School liaison Lucille McGrath

CURRENT PLANNING APPLICATIONS

All planning applications, their history and all supporting documents can be viewed at: www.swindon.gov.uk/planning

Planning issues are discussed at the monthly Parish Council meetings. Public representations are heard prior to the start of the meeting.

S/LBC/23/0392 Erection of a detached outbuilding/ home office. At: Hergest Ridge, Cues Lane, Bishopstone.

S/OUT/20/0160 Outline application for mixed use development comprising up to 320 dwellings and a mixed use hub of up to 1,550sqm (use classes A1/A2/A3/A4/A5 and D1) with associated works. Details of the access from the Southern Connector Road to be determined, with all other matters reserved (revised details). Land At Foxbridge Village (south) New Eastern Villages, Wanborough Road, Wanborough. **Comments by 26/5**

S/OUT/23/0456 Outline planning permission for up to 275 dwellings (use class C3) including the provision of affordable homes, together with pedestrian and cycle connections, landscaping, surface water drainage, open space to include play areas, allotments and other supporting infrastructure (including utilities) and engineering works including groundworks at land east Of Wanborough Road (Green Land), New Eastern Villages. **Comments by 28/5**

PENDING DETERMINATION

S/HOU/22/0892 Erection of two-storey side and front extension at: 2 Grove Cottages, Hinton Parva Lane Hinton Parva. Revised documents.

S/23/0190 Change of use from agricultural to residential land and erection of 1 no. dwelling (at land adjacent to Westhill House, Hinton Parva.

VILLAGE hall news



BISHOPSTONE

Notice of AGM

Please be advised registered Charity 271165

AGM at Bishopstone Village Hall, Icknield Way, Bishopstone
26th June 2023 at 1830 Hrs

FUNDRAISING AND THE NEWSLETTER

A "sub, sub" committee met early in May over a lamb chop, an oat-milk latte and a few halves of pink falling down juice. An eclectic mix! The operating costs, distribution and editorial content were all reviewed most sensibly. Our Charity treasurer, Andy, was delighted announce he had received a generous donation from a Bishopstone resident towards the running costs of the newsletter. This donation is hugely appreciated, thank you, and we also understand the person wished to remain anonymous in their support. I wish to also acknowledge that a financial pledge has been agreed from the PCC, thank you.

NEW CLASSIFIEDS

Our advertising revenues continue to evolve and plans are afoot to broaden our engagement by including a small section of "Classifieds and Not Too Personals" for £5.00 for 50 words entry per edition and £10 if you'd like to include a picture. Please email to bishopstoneeditor@gmail.com.

Finally it was established by the "sub sub" that a specific fundraiser will be required to get us over the breakeven point for the newsletter, to ensure its running costs are covered. It was suggested that perhaps we have a one off Skittles Supper event in the autumn for this purpose. All welcome and could be a great community event. We'll do a raffle and have prizes, details to follow. Meanwhile continue to enjoy the read and keep up the content and copy, stories of local interest submit to bishopstoneeditor@gmail.com

BISHOPSTONE ALLOTMENTS AVAILABLE

On behalf of the Church Commissioners and their land agent Strutt & Parker, several half allotment plots are now available to rent by the local community. A perfect opportunity to grow your own fruit and vegetables.

The price is £8 per half plot per year (April to March)

No permanent structures such as sheds are allowed but low level storage is permitted.

Although livestock cannot be kept, bee keeping is encouraged by the owners.

If you are interested in taking an allotment in Bishopstone, contact Steve Bell on 07598 185643



VILLAGE HALL HIRE

Both Bishopstone & Hinton Parva Village Halls have availability if you would like to hire either of them.

BISHOPSTONE INFO/BOOKINGS:

Anna Bareham: annajanebareham@gmail.com
Hourly rate: £11 residents, £15 non-residents

HINTON PARVA INFO/BOOKINGS:

Janet Hawkins: 01793 791391
Email: jaymaybee02@icloud.com
Hourly rate: £8 residents, £10 non-residents



We've heard through the grapevine there is an appetite for a regular village Fitness Class or Pilates/Yoga class to be run in Bishopstone.

Should anyone be interested in setting up or running an event please contact: annajanebareham@gmail.com for availability of the Village hall.

PUBLIC NOTICE

SWINDON BOROUGH COUNCIL

TOWN POLICE CLAUSES ACT 1847-SECTION 21

NOTICE IS HEREBY GIVEN that, for the purpose of regulating traffic during the holding of a 'Pig Racing For The King' event, Swindon Borough Council has made an Order pursuant to section 21 of the Town Police Clauses Act 1847, the effect of which will be that Cues Lane, Bishopstone, shall be closed to all vehicle traffic between the hours of 11am to 4pm on Sunday 4th June 2023.

Head of Strategic Transport
Civic Offices
Euclid Street
Swindon
29 March 2023

For further information regarding this notice please call Streetworks on 01793 463040

CLASSIC CARS IN THE GARDEN

Drive it day brought its usual eclectic selection of classic motor bikes and cars to HB's Royal Oak car park and garden on April 23—from the pre-war race winning Riley Special, a superb Lancia Integrale, that scruffy but beautiful US monstrous Ford V8 flatbed truck (lives by the Bishy pond) and the simply delightful Ford Consul Capri dating from 1962, which picked up the best in show for the two beauties who brought it, Angie Kevern from Wanborough and Sandra Kerger from Upper Stratton. To them, £100 in Oak vouchers. Nothing for the bikes this year—ultra-discriminating Judge The Rt Hon Stephen Patterson said it was a wonderful selection but nothing was as good as his own selection of Nortons and BSAs, and even he couldn't give himself a prize...

It's rapidly (ha ha, it's only taken 17 years) becoming a lovely village event. I estimate that about 100 people from these villages turned up either to show something off, or just to wander round and be nosey, and stay for a drink and a pizza in the garden, and meet up with locals who'd all been hibernating since October. And astonishingly, given the forecast, it was mostly warm-ish and dry. In the 17 years we've been hosting our own version of drive it day, always on roughly the same Sunday in April, it's only once rained heavily. Thanks to all for being there, for bringing something, and for helping to make it all rather jolly and noisy; and for assisting with the complex parking arrangements, Russell!

TF



WINNING CAR

Right: Angie Kevern, Wanborough

Left: Sandra Kerger, Upper Stratton

Winning car: 1962 Ford Consul Capri
£100 of Royal Oak vouchers for them!



Pig Racing for the King

Public Notice: SBC Reference SRC000070

12th Annual

(Formerly International Pig Racing Day and originally Pig Racing for the Queen on Her Majesty's Diamond Jubilee 2012).

Sunday 4th June 2023

Road Closure Notice: Cues Lane, Bishopstone

An application has been made for the usual short-term road closure according to the Town Police clauses Act 1847. (Any reference in 'the Act 1847' to any carpet, rug or mat, including door mats, beaten or shaken before the hour of eight in the morning are probably inapplicable in this instance.)

The registered Charities to benefit from this year's event include the Swindon and North Wiltshire Deaf Children's Society, the Village Hall and the Prospect Hospice.



Pond Life

How we can help...



Credit: Natural History Museum



To do your little bit to help the decline of UK ponds and to attract natural wildlife into your garden, you can create your own pond. Even a tiny pond will benefit a lot of animals. Lots of creatures are completely aquatic, some need water for drinking and bathing and others start their lives in water. It's also a lovely hobby spotting new wildlife and something fun to do with the kids!

It's easy to create a pond in a container and requires little maintenance. Visit The Natural History Museum's information page for all you need to know about creating your own small wildlife pond:



www.nhm.ac.uk/discover/how-to-make-small-wildlife-pond.html

We'd love to see some pictures of your creations over the coming months too: Email: BishopstoneEditor@gmail.com

B T S B P W K P S C G N M G O B C T J O Y P T A I
A W A D B O F R O G S B E F E S V G M J B M S J W
M E D B H R N M U D F Z A I U P W E C W H Z P J G
P A G L I I B D Y N W A T E R B O A T M E N R T I
H T H A W N R Z S S A Q U A T I C J H T K N A Q J
I K Q C I S O Z E K T L O Z Y L J C K Q G R I U H
B C C K E E O L G O A O O D A B Y H Z A U A N D D
I Y C B E C C S W X D T N G R P E X X V G M W T F
A G D I K T K R C Y P Y E E S A U P C G S P A F Z
N N R R L S U U A G H W N R S B G V H Q X L T D C
S L U D T P R L H E O N E P S D O O H X N P E R A
P M H S H K S T L N T U P G K P T C N L R Q R U P
P C Z Z V K Y R I A O A C D Q S X Z W F F J M Z V
N L O N V G L Y E T S O R Z S T X K U I L A Z I H
E K A N U G Z L C E Y B P L O Q R L O A V I Q A N
D P Y N T F Y X M D N G J Z L K K E O S E I E N S
Y O W A T A W G V I T E C O S Y S T E M G R R S H
E N V J Q I I G B C H A O G E C T K T S E T G O S
S D Y B Y I N N V S E U A K R U J I I O T V W C U
N L N L T E Y G E Y S U V Y Z A E B D L A P C L L
Y I O D W Q D E T R I F T G H Y V P Y E T E R V O
C N J Z C J J S N V S P D C Q H D E W C I S M Z G
K E T J Y Z E V G X E P D N L T X P L K O A D Y E
J R Y D O K U Y V W N U C X G X Y L I G N K F C G
D K H S H M Z B G A S H V K W Z Y U F I X J E I J

May Word Search

S C O M M O N F R O G S P V G L X G Z G Y W N Y
X M L K O F W I V S D I V Z D C E X W V C O R R X
L K O N I Y G F F Z O I Z W R V C C O W M T F D
P W X O R V P L Y D S W J H S Q E D M B N A G O
E J P C T U H O P H B S M X J D M L C U I A G G
E F A H V T F H B I O H L B K J W E M Z T T I S
X M L N A U N Z W W K T C G Y Z Y N Q M Z U E F F
I D M I C J I E L I Q R O K A P I Y S N B R M C S
A O A N N A G S W M X I M J M Y B N U E X U P C J
R D T O S G I F K T R T M X P Y K K Y N N S O N C
V I E F E R Z D X I C O O G H P B K O T A C R Y U
A K N I F E M D C K V N N K I I T K Z K I W R A P O
E S E S R A C M G V L H T M B T W K O U D I R O F
S L W K T H H O K V E O B I M C P O W O S I N V
W F T M E C U Z V C Z L A Y A M B D U J P T A D A
F K E I I R R O C P B V D O N I E H I N U A I X D
Y U X Q O E T K J K L E E X S M S P K Z C T L F Q
C U D R U S P M G N I T B K B A C G X Z I U D G D
U X O E O T R K Y V A I A U R O C K S Y R S Z F F O
C X H K X E H R A V U C M Z F G I U T Y I M L A
K H F E D D T K O P D U A X N O H M U O I N V V D
I Z S J C N Z D L P Y S C E N U B Z W L X T E Z Y
H E L R U E E J Y C P V L J Z S O U C E T X M X M
C C O O K W O Z V F I Y Z I O P F C Z Z V J
C T S S O U R T T O N V U L G A R T S O N U L X I

This month's word search contains 20 words/items which are all connected with creating a pond. Enjoy!

April Solution

Well Hung Framing by Kate Herbert

I am Kate, your local bespoke picture framer. I have a passion for framing and enjoy working collaboratively with my clients in selecting the best mounts and frames for all projects and budgets - from box framing, medals and memorabilia to paintings, prints and certificates. I also offer frame repairs and reglazing.

Please call, text or email to arrange a visit to my studio in Watchfield to discuss your requirements.

07710 348 263 bykateherbert@gmail.com

Check out my website for further information

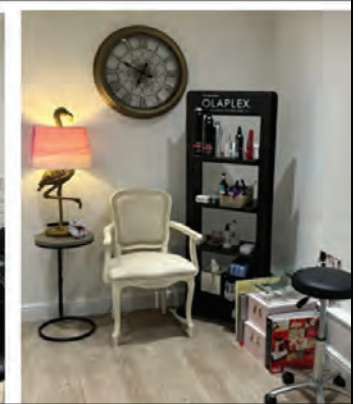
wellhungframing.co

Rachel Payne Professional Hairdresser



Established 25 years
Based in Bishopstone
Olaplex, Moroccan Oil & Schwarzkopf Treatments Available

For Appointments & Consultations
Contact 07527 607947



CREATIVE GRAPHIC DESIGN & ILLUSTRATION
DIGITAL WEB SEO EMAIL FOOTERS
SOCIAL MEDIA ONLINE ADS E-MARKETING
ANIMATION CREATIVE 3D FLIP BOOKS
PRINT LOGOS BRANDING MARKETING
ADVERTISING CREATIVE COPYWRITING
STATIONERY BROCHURES PACKAGING
POS GREETING CARDS BUSINESS CARDS
LEAFLETS FLYERS LARGE FORMAT
BANNERS FLAGS VEHICLE LIVERY
SIGN WRITING PROMOTIONAL ITEMS
MERCHANDISE EXHIBITION STAND DESIGN
AND PRODUCTION AND MUCH MORE

INFO@LULU.UK | 07795 086 197
© LULU.UK | 2023

GRANT FRASER TOWN & COUNTRY



We are a family owned, fully independent company who take pride in getting customers moved onto their next milestone in a simple and stress free way.

If you are thinking about selling your property, to arrange a *free* no obligation valuation today, contact:

01793 228 440
07737 745 231
grant@grantfrasertc.co.uk

Photo of the month

Congratulations Ian Brown from Bishopstone who is the winner of this month's photo of the month with a gorgeous photo of his goofy hound Maisie.

Achieve local fame with your photographic skills. The lucky winner will be chosen by the team each month. They will have their photo printed in full colour, right here, for the whole community to see.

SEND US
YOUR SNAPS

Email:
BishopstoneEditor@gmail.com



'Magnificent Maisie'



Royal Oak Diary



Serrano de Bergerac is the latest racing pig to be named for the big international **Pig Racing for the King** spectacular on **June 4**, bought by that man with a nose for a flatulent pig, Justin Moss. Without even advertising that the racing pigs are now on sale, we've sold probably five of them, with neighbours Rachel Hale, Tom Green, Anna Bareham and possibly Libby Bradley all vying to see which hopeless three legged creature they can turn into a thoroughbred. No chance!

Anyway, this means there are at least three pigs still for sale, and if Libby Bradley fails to deliver the goods, there are still four. All we seek is £45 per pig (all to charity); a great porcine name; and we then have the right to write facetious comments about you in the race day programme. It's the usual pointless day—all day betting on the tote run by Sir Tom Green, music in the garden at some point, food and drink everywhere you look, and fun starts at midday and we generally get our act together to run the first race about 2pm. Just remember, neighbours, that Cues Lane is a no go zone from about 10am till 4pm that day, the end by the telephone box, with the full blessing of SBC in case you wonder. And you don't get to keep the pig at the end of the day.

The other main non music event in the next few weeks is our **pre-Ashes cricket supper with Jim Maxwell from Australian Broadcasting Corporation, and Test Match Special, speaking over supper with BBC 5Live's Pat Murphy**. This will be a lovely relaxed evening for 40 of you, with many funny stories to listen to and to tell, I hope. **Tickets are £40 each; reductions if you bring 4 or more guests. 6.45 for a 7.15 start. Book your place now.**

Music is also more prominent at HB's Royal Oak this summer—we have the revived **Cheesehouse Band on May 28**, all Bishopstone based, in the garden on a sunny Sunday; the wondrous **Honeymoon Swing band in the garden on June 24** (outstanding fun). Here's hoping for some good weather.

Our National Agroforestry Show and Exhibition, September 6 and 7 at Lower Farm (on the Bourton/Hinton road) is progressing well, and **Groove Armada/Andy Cato are now confirmed for the Wednesday, Sept 6**, plus support acts—not sure who. A day ticket to the Wednesday of the event includes a ticket to Groove Armada; otherwise wait for tickets to be available generally, probably mid-May, just 250 of them. I'm having to resist some bribes being offered. They'll have to be a lot better than that! **www.agroforestryshow.com**

On a serious note—we ask again that dog walkers **PICK UP** after their dogs when on our farmland. We lost 22 calves through abortions last year because of that nasty worm in you-know-what. And we ask that you keep dogs on leads this next four months to avoid the ground nesting birds that we all like to see here. And that you keep to recognised tracks and bridleways, rather than romping across fields of young crops—which are all way behind normal growth stages due to the appalling cold and wet weather we've been enduring. Our dairy cows are currently munching their way through next winter's feed, it's so dismal currently.

And the Oak car park will soon be blighted by parking clamps. With £75 release fees payable. All we ask is that people not using the pub or hotel simply come inside and ask us every time they wish to use the car parks for any other reason. We are irritated by those who think it's their right to park there without any reasonable courtesy. We're actually quite nice people...

TF



We are a local business providing a professional and friendly service to commercial and domestic customers in Bishopstone and all surrounding villages.



Fully qualified - Insured - 30 years experience

10% discount off standard rates with this ad

Mobile - 07379 276187

Email - enquiries@enviropestcontroltd.co.uk
www.enviropestcontroltd.co.uk

SWINDON SKI & SNOWBOARD SERVICING

WWW.SWINDONSKI.CO.UK
enquiries@swindonski.co.uk

Ian Thomas 07778 807783

coramVoice

getting young voices heard

Becoming an Independent Visitor, giving your time and energy to developing a long term rewarding friendship with a child offers them positive benefits over and over again.

Our volunteers enjoy the challenge of building a lasting friendship with an individual child and the children benefit greatly from a consistent, fun relationship with someone outside the care system. Activities will depend on the age and interests of the child, this could include things like a walk, playing in the park, a visit to a museum, bike riding, sports etc.

This is a long-term, one to one commitment.

- Volunteers must be over 18 years of age.
- We welcome applicants from all backgrounds.
- Full training and ongoing support will be given, and out of pocket expenses paid for mileage and activities.
- Volunteers will be subject to enhanced police checks.



Find out more:
IVSwindon@Coramvoice.org.uk

BARNES COACHES

01793 821303 | BARNESCOACHES.CO.UK

NEW 2023 Holiday Brochure OUT NOW!

Includes exciting new UK & European tours for 2023! Request your free brochure today.

BARNES

2023 UK & European
 Coach Holidays

FREE* HOME PICKUP
 & DROP OFF SERVICE
 AVAILABLE ON HOLIDAYS
 4 DAYS & OVER!
 *See our website for our
 free pickup area.

01793 821303
barnescoaches.co.uk

Est.1986

Chappells

ESTATE AGENTS



rightmove



Sales • Lettings • New Homes

Specialists in village property for over 35 years.

Contact us now for your free valuation

01793 618080



sales@chappells.uk.com



lettings@chappells.uk.com



CLASSIFIEDS



Stokke Child Carrier. Black.
Boxed and unused.

RRP £ 129.95
Collect offer £15.00
Call Dickie Van Dyke
Bishopstone 07740 106 222



Retro Beige Real Leather Bond Baddie Style Swivel Chair. Lovely feature chair on shiny chrome base. Very comfy, very good condition. Has one scratch in leather on seat - hardly noticeable. Has fire safety label. Great addition to lounge, man/woman/person cave.

£150 Bishopstone 07795 086 197

Dunelm 'Elements' ound wall mirror, sold out in store. Black border, 55cm diameter, almost new. Four available.

£15 each Hinton Parva 01793 791 949

12 tealight /pillar candle lanterns ideal for garden parties, wedding, table decor. Used. 5 x Ikea 'Sommar' lanterns, white, industrial farmhouse look, 23cm tall (plus handle), 2 sides glass, 11cm square. 7 x silver metal/chrome, 20cm tall (plus handle), 11cm square, four sides glass.

£35 Hinton Parva 01793 791 949

Classifieds: £5 per entry for 50 words or £10 with a photo. Drop your adverts in to Lynne at Bishopstone Stores, with payment. Email photos to: BishopstoneEditor@gmail.com

Watchfield Opticians

Opening hours:
9am – 5:30pm Monday to Friday
9am – 1pm on Saturday

Your local Opticians situated next to the Co-op in Watchfield.
With parking available right outside and easy access.

Full Eye Examination.
OCT and OPTOMap scanning.
NHS funded eye tests available for those eligible.
Children's Eye Test.
Contact Lenses.
Hearing Tests and Ear Syringing.
Great choice of glasses and sunglasses to suit all tastes and pockets.



2 Majors Road, Watchfield, SN6 8TQ
T: 01793 783848 E: info@watchfieldopticians.com
www.watchfieldopticians.com



A healthy and productive garden starts with healthy soil.



Use Soil Improving
Mulch from Apsley
Farms this Spring!



£90 SPECIAL OFFER!
730L mulch bulk bag plus 10L Plant Food with FREE delivery*
Our Natural Plant Food is organically certified. Available in recycled 5L containers.
*central UK postcodes.

sales@apsleyfarms.com

01264 554433

RECOLLECTIONS OF BISHOPSTONE LIFE IN THE 1800'S

PART ONE



Bishopstone is a pretty village, 1 mile from the border of Berkshire. The Postal address in the 19th century was Bishopstone Nr Shrivenham Berks. I have heard that there used to be 17 farms in the village. Now there are 4 large farms & 2 small buildings.

No doubt many of the farms were what was called life holding. A man would pay a sum of money, for so many fields & perhaps a house or cottage would be granted to him as long as he lived. This form of tenure was ended around 1830. As the tenant died, the fields would be added to the nearest farm.

As the farms grew larger the farmer could not always cope with the ploughing with his own horses & ploughs, so would hire Steam-Ploughs. This was two large & powerful engines, they would be placed 1 each side of the field to be ploughed, & would draw a plough with a lot of Shears backwards and forwards, of course moving so far each time. The advent of tractors has Superseded both horses & Steam-Ploughs. Lord Holland used to be 'Lord of the Manor' but now most of the property is owned by the Ecclesiastical Commissioners,

they did have a sale in 1882 & sold various Small Cottages. The Manor House used to stand where is now Prebendal Farm House. The Manor House was used for some years as a gentleman's boarding School. Until the present School was built, the village children were allowed to go to the Manor to School; they were called charity children. Children were allowed to leave School at 11 years of age provided they had passed the 4th Standard. Most of the girls went into service, & the boys on to the farms, girls would live in & receive about 1/- per weeks wages. The boys when they first started work 3/-6 per week. In the winter months, night school (or evening continuation classes). Were held twice a week, & were well attended.

RH

We are grateful to Sue Waldek who found these notes in some of her late aunt's effects. (Sue is a Bishopstone girl, formerly of the High St). Sue's aunty was known for her talks at the Village School, this from 1955.

In addition to her talks, encouragement was given to the children to collect their own 'memories'.

Collect your pictures, your photographs, your stories from the old people, go & talk to the butcher, the baker, the Candlestick maker!

Some like to hunt up old records, documents, recipe books, household account books, wills etc.

How much was paid for tails, for paddling docks etc.

The first Bus, the footpaths, old kissing gates.

About reaping, threshing, gleaning. Did women work in the fields all the time, what wages.

The basket maker, the beehive maker.



EDWARD BAYS Ltd
PLUMBING & HEATING

01793 763790
www.edwardbaysltd.co.uk

Bryn Llinos

A holiday cottage close to Beddgelert in the heart of Snowdonia

4* Rated with 5* Reviews

Excellent for beaches, mountains, walking, cycling and mountain biking

Heritage steam railway just 50 metres away at Nantmor Halt (Porthmadog to Caernarfon)

Discounts available for local residents to Bishopstone, please contact: brynllynos@yahoo.com

www.holidaycottages.co.uk/cottage/64657-bryn-llinos



HERITAGE TREE CARE

Professional Tree Surgeons

**Comprehensive Service
Qualified Staff
Fully Insured**

- ✓ Pruning and Shaping
- ✓ Felling and Removal
- ✓ Hedge Cutting
- ✓ Stump Grinding
- ✓ Tree Planting

Free quotations and advice
Call Ian Walding (N.C.Hort / N.D. Arb)

01793 790210

Email: ian@heritage-treecare.co.uk
www.heritage-treecare.co.uk



Pearce Funeral Services



- **PROFESSIONALLY QUALIFIED**
- **CHAPEL OF REST**
- **HOME VISITS AVAILABLE**
- **ONLINE FUNERALS AVAILABLE**
- **RECOMMENDED IN THE GOOD FUNERAL GUIDE**
- **COMMITTED TO THE FAIR FUNERAL PLEDGE 2021**

2021 FAIR FUNERALS

By signing the pledge, we have made a commitment to be open with our families about the costs involved in funerals and to ensure that we always offer the most affordable options to help them to plan a funeral that is within their means.



92 Ermin Street, Stratton St Margaret, Swindon, SN3 4NN | 01793 832 072

1 Groundwell Rd, Swindon SN1 2LT | 01793 422422

www.pearcefuneralservices.co.uk | Info@pearcefuneralservices.co.uk



WEBBS Builders Merchants

Established for 4 generations

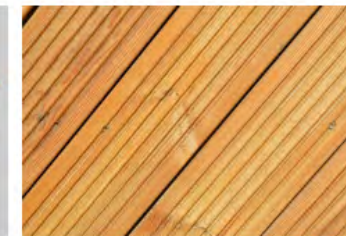
Well stocked, high quality products at competitive prices



Fencing



Garden Paint



Decking



Building Materials



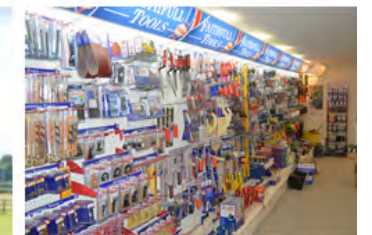
Treated Timber



Custom Gates



Railway Sleepers



Hardware Shop

Friendly staff - always eager to help

Local delivery available



Open Monday to Friday 7:30am to 5pm, Saturday 8 am to 12 noon

Please note we are not open on bank holidays

WEBBS, Southdown Farm, Faringdon Road, Longcot, Oxfordshire, SN7 7UA
(please do not follow sat nav)

01793 783 879

sales@webbswood.co.uk

webbswood.co.uk

General Information

Contributions

If you'd like to write an article or submit any photography please email Andrea for consideration in the next issue. We aim to distribute the newsletter on or around 15th of each month.

DEADLINE for any considerations will be the last day of the previous month but we'd welcome submissions sooner.

If you would like an advert designing for placement in the village news, please contact Andrea who is offering a discounted rate for Village News adverts.

We are a non-profit organisation

The Village News is created and run by a small group of volunteers and is a non-profit organisation affiliated to Bishopstone Village Hall. Reg Charity no 271165.

If you would like to make a donation to help with the upkeep please contact Treasurer Andy P, or there are additional copies available and a donation box on the counter in Bishopstone Stores.

Team

ADVERTISING:

Graham Curley
graham.curley42@gmail.com

Russell Hatch
russell_hatch@ebamooba.co.uk

PUBLISHING EDITOR:

Andrea Wadsworth
andrea@luli.uk

SUB-EDITOR:

Val Brodin
valbrodin@gmail.com

CREATIVE COPY:

Tim Finney
Richard Walker
richardw@eddingtons.co.uk

TREASURER

Andy P
andrewpocock@yahoo.co.uk

DISTRIBUTION:

Christine Thomas
littlecot2010@hotmail.co.uk

Doreen Cooper
01793 792 965

Diary May/June 2023

2023	Time	Event	Place	Contact
28.05.23	3pm	The Cheesehouse Band	Royal Oak Garden	01793 790 481
29.05.23	Spring Bank Holiday			
04.06.23	Midday	Pig Racing For The King (see pg. 18)	Royal Oak / Cues Lane	01793 790 481
08.06.23	7pm	WI: Annual Handicraft & Flower Show (see pg. 3)	Bishopstone Village Hall	janatwan@icloud.com
13.06.23	6.45pm	Cricket: Ashes Supper (see pg. 18)	Royal Oak	01793 790 481 tickets
14.06.23	7pm	WI: Talk from Alan, Twigs Community Gardens (pg. 5)	Bishopstone Village Hall	Marion Peck: 01793 791 001
17.06.23	12pm - 5pm	Peach Pip Book Shop	Bishopstone Village Hall	annajanebareham@gmail.com
18.06.23	Father's Day			
18.06.23	12pm - 3pm	Peach Pip Book Shop	Bishopstone Village Hall	annajanebareham@gmail.com
24.06.23	9.30am - Midday	Repair Café - The Hub	56 High St. Shrivenham	sustainableshrivenham@gmail.com
24.06.23		Honeymoon Swing band (see pg. 18)	Royal Oak	01793 790 481
26.06.23	6.30pm	AGM: Bishopstone Village Hall	Bishopstone Village Hall	
28.06.23		Trip to Rooksnest (see pg. 5)	Lamborne Woodland	Marion Peck: 01793 791 001
01.07.23 NEW DATE		Rescheduled: Wanborough Horse and Dog Show		info@wanboroughshow.org
06.09.23		Groove Armada/Andy Cato DJ set. (see pg. 18)	Info through Royal Oak	01793 790 481 tickets
06/07.09.23		National Agroforestry Show and Exhibition (see pg. 18)	Eastbrook Farm	01793 790 481
2nd-11th June		Third North Wessex Downs Walking Festival	northwessexdowns.org.uk/walking	
1st Tues of month	6-7pm	Sounds Like Women Radio Show	Swindon 105.5 fm	Hosts: Mandy, Tracy & Luiza
2nd Thurs of month	7pm Start 7.30pm	Bishopstone and Hinton Parva WI	Bishopstone / Hinton Parva Village Hall	Jan Chapple janatwan@icloud.com

Church Services, please see **page 10**
Parish Council Meetings, please see **page 13**

The views of individual writers expressed in this magazine do not necessarily reflect those of the editors, the parish council or the church. If you have any feedback or questions, please contact one of the editorial team listed to the left. Apologies for any stray typos. We do try hard to catch them all but occasionally some escape.

You may also deliver items by hand to Bishopstone Stores and Lynne will kindly pass anything on to us. Please make sure that you include any names and contact details so that we may get in touch with you. None of these personal details will be published unless we are specifically asked to do so.

Send us your
DIARY DATES
Email:
BishopstoneEditor@gmail.com

Tell us your thoughts!
'LETTERS TO THE EDITOR'
Email:
BishopstoneEditor@gmail.com