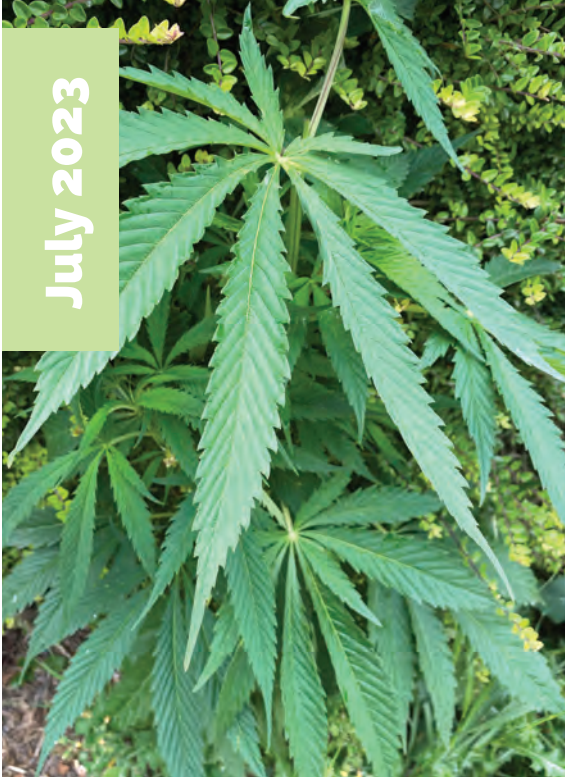




# VILLAGE NEWS

July 2023



Exotic hedgerow plant found in Hinton Parva.



Of the estimated 10,000 orchids in Eastbrook Valley, here's a pretty spotted orchid. Found and snapped by Justin Moss.

## HINTON PARVA IS HIGHER THAN BISHOPSTONE

This interesting specimen is almost certainly what we in the agricultural trade call a 'volunteer'—certainly no-one in sleepy Hinton Parva knows what to do with this unusual crop, so I'm guessing it has spread naturally from the small plantation one occasionally sees on The Ridgeway, very close to the so-called 'County Line', while dawdling along with one's ageing dog. Or it could have come from the million dollar stocks that were found at Starveall about 12 years ago. Enthusiastic Bishopstonians are still looking for the rest of the stash.

## NEW VILLAGE SPEED LIMIT?

Swindon Borough Council is consulting residents about a potential 20mph scheme for Bishopstone. All residents are invited to comment on the proposals. Your views and the number of responses will be taken into account. The response period has been extended to 31st July at the parish council's request. For further information see page 12.



You can also scan the QR code to go directly to the consultation online: [swindon.gov.uk/trafficregulationorders](https://swindon.gov.uk/trafficregulationorders) and click: Stage 1 - Informal consultation stage





# Prom Perfect!



Some Bishopstone ladies dressed to impress, ahead of the Ridgeway School Prom on Friday 30th June.

"Papp'ed" by our roving reporter whilst waiting for their stretched limo to arrive.

Pictured: Catie, Ray, Millie & Edie



**The eco way to refresh your wardrobe**

**On Thursday 20 July at 7pm we are holding an adult clothes swap in the Hub.**

More details and registration can be found on our website [www.sustainablesshrivenham.com/events](http://www.sustainablesshrivenham.com/events).

Tickets are £5 each (to include a welcome drink).

**The next two Repair Cafes will be held on Saturday 22 July and 26 August 0930-1230.** Only one item please and can range from electrical repairs to minor clothes/fabric repairs.

**The next Crafters' Workshop is on Saturday 12 August.**

Please visit our website or Facebook page where you will find further details.

[www.sustainablesshrivenham.com](http://www.sustainablesshrivenham.com)

Please email us with any comments to [sustainablesshrivenham@gmail.com](mailto:sustainablesshrivenham@gmail.com)

**TOGETHER**  
WE CAN MAKE A  
**DIFFERENCE**



## Bishopstone Stores

July?!?! How did that happen?! You may, or may not, be aware that July has become 'plastic-free July' - an initiative originally set up in Australia to try and combat the use of single use plastics that has now spread to 190 countries across the world. One small change that you make this month can become a habit and make a difference to our planet and in particular our oceans....and your village shop can help with this!

If you are not already using our milk refill station why not give it a try? It is one of the easiest but possibly the most effective change you can make; plastic milk bottles are the worst type of container for the environment. Here in the UK we use an estimated 36 million plastic bottles a day of which only 19 million are recycled. So why not pop yours in the plastic waste for the last time and come in and fill your glass bottles! If you don't have any at home you can buy them from us and just keep on refilling! We've done this right here in the hotel. We use around 2 bottles of milk per day for our guests. We've changed from single use plastic to glass refills; even my maths knows that's over 700 plastic bottles per year no longer being used.

There are so many ways you can cut plastic from your life. You will already know that we don't have any packaging for our wonderful organic veggies and provide paper bags for you, but we also now have fantastic reusable, organic cotton mesh bags available to buy for all your fresh produce. They are machine washable and once they have done their time are fully recyclable. Our beeswax wraps and cotton bowl covers will eliminate your need for clingfilm ever again and they are

so much prettier! Even our unsponges are plastic free and, unlike the traditional washing up scrubby sponges, don't release any nasties into the water when they start to get tired.

Whenever we source new products for you here in the shop, the packaging they will arrive in is always a consideration. You will find that a huge percentage of our packaged goods are wrapped in compostable film, even the crisp packets are plastic free and can go into your food waste!

Why not make one small change this July and refuse a single use plastic?

Lynne

### Opening Hours

**Monday – Saturday 9am - 6pm**

**Sunday 9am - 3pm**

@bishopstone\_stores

@helenbrowningsbishopstonestores



## RECYCLING MATTERS



Doesn't time fly! We're back to Plastic Free July ([plasticfreejuly.org](http://plasticfreejuly.org)) a global movement that helps millions of people be part of the solution to plastic pollution by encouraging people to refuse or reduce their use of single-use plastics. There's a fascinating (but horrifying) website called The World Counts ([theworldcounts.com](http://theworldcounts.com)) where you can see all sorts of world figures (population, average global temperature, global sea-levels etc.) change before your eyes. Scarily, it estimates that the world will use five trillion plastic bags this year, with less than 1% recycled, and that 10% of all the plastic we use ends up in our seas. The Ellen MacArthur foundation predicts that there will be more plastic than fish in the oceans by 2050. And it's estimated that plastic already kills more than one million marine creatures each year. We all know, I suspect, that we could do more to reduce our use of plastic in the first place, re-use and then recycle responsibly, but it might take a bit more time, effort and commitment on our part. But in the words of the Zero Waste Chef, Anne-Marie Bonneau, "We don't need a handful of people doing zero waste perfectly. We need millions of people doing it imperfectly."

A simple habit I'm going to try and cultivate this month, inspired by Plastic Free July, is 'Take 3 for the sea' - see [Take3.org](http://Take3.org). The idea being that every time you're out and about, you pick up three pieces of litter. It sounds very simple and manageable - but 'rescuing' 93 pieces of litter by the end of the month sounds like that has impact and will make a difference. I'll report back next month as to how I do: and hopefully it will become a habit for life.

Have you noticed how the Reduce-Reuse-Recycle mantra has grown? I've now seen various combinations that include additions of Refuse, Rethink, Repurpose, Repair and Rot! 'Refuse' is going quite well for me - on the bag front and till receipts. On the latter, if you'd normally ask for a receipt in case you need to return an item, if you used a store's loyalty card then 'proof of purchase' can be checked by the shop that way. I've also been doing a bit on the 'Repurpose' front this month. I said at the beginning of this year that one resolution was to reduce my huge stash of beauty lotions and potions I've managed to acquire, and it's going down nicely - as is how much I would normally be spending on them! I'm now thinking a bit more out of the box: when I run out of hand cream for example, repurposing the facial oil I was given that would otherwise be unlikely to be used. And last year's sunscreen for the face is now being rubbed in this year on my arms and legs. Waste is just well, waste.

Don't forget, if you have items that you won't use, there may well be others who can make use of them. You could potentially sell them on eBay and the other various online market places; there are the classified ads in this magazine, or try car boot sales. Charity shops and the plethora of fêtes coming up (including our own!) are always grateful for contributions or you can give things away locally on the Olio site. Don't forget: "Refuse what you do not need; reduce what you do need; reuse what you consume; recycle what you cannot refuse, reduce, or reuse; and rot (compost) the rest." - Bea Johnson. Wise words!

Karen Walker



## Bishopstone & Hinton Parva WI



The Flower Show committee hard at work

The June meeting was the annual Handicraft and Flower Show which was held in Bishopstone hall. The classes varied from a floral exhibit in a kitchen utensil to an item showing how to 'Reuse, Recycle'. All the entries demonstrated how talented WI members are.

There were entries from Bishopstone School and it was lovely that parents came in at the end of the school day to view their bright and colourful art work.

Entries were judged in the afternoon and then there was an 'Open House' in the evening which was well supported by families, friends and members from other local WI's. The evening ended with a raffle and an auction which provoked a lot of hilarity.

**New members are always welcome. If you are interested in joining please contact:** [janatwan@icloud.com](mailto:janatwan@icloud.com)

**Future date:**

**Thursday 10th August** at Bishopstone village hall. Bishopstone Pottery-the journey with Sue and Adrian Dent. Doors open at **7 p.m. for 7:30 p.m.**





# Happy Gardens



by Jane Pearson

## JULY MUSINGS

It seems strange to be writing about autumn in the heat of summer, but as I look around the beginnings of our garden in Bishopstone, my thoughts turn to next season and which plants will shine from late September onwards. I love the movement of grasses with their feather-like seed heads and the rich colours of sedums and rudbeckia. My shopping list for other autumnal beauties, needed to plug any gaps, is being written. Should you need inspiration, I've popped some favourites onto my website as a starting point, or call me to book a Flower Hour or two: a garden consultation full of friendly advice, hints and tips.



## JULY FEATURE PLANT FEED/FERTILISER

I've recently had a couple of questions about fertilisers, ooh the glamour! There's a confusion of choice in the shops and it's easy to get bamboozled by all the different types of plant feed, and when to use it. Here's a quick guide to help you choose which is best for your gardening needs. This is an abridged version, please find the full article on my website and blog page. There are two main types of fertilisers and they both usually come in soluble and granular/pellet form:

**Inorganic fertilisers:** Synthetic forms of plant nutrients, usually more concentrated and fast acting such as Growmore, Miracle Gro & Phostrogen. They are often soluble, and application will need to be repeated weekly or fortnightly, they are often used to maximise plant growth so great in the spring and summer.

**Organic fertilisers:** Derived from plant or animal sources, that tend to be slower acting but longer lasting. Examples include dried fish, blood & bone & poultry manure pellets, usually applied in early spring and late summer. The exception being liquid seaweed, liquid comfrey or nettle feeds which can be applied weekly or fortnightly through the growing season, I've included a recipe for you to try at home!

**A quick science lesson to help you choose which nutrient mix to use:**

Most fertilisers are based on three major plant nutrients:

- (N) Nitrogen: For green leaf growth
- (P) Phosphorus: For healthy root and shoot growth
- (K) Potassium: For flowering, fruiting, and general hardiness.

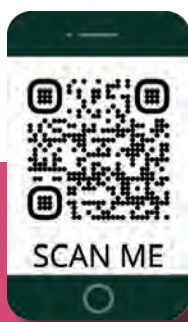
A general fertiliser offers a balance of all three major nutrients, plus lots of minor ones along with trace elements. All fertilisers should quote their N:P:K ratio on the packaging and its always worth checking the balance to ensure the best nutrient ratio for your plants.

**Which nutrients do you need to feed your plants?**

- High potassium (K) feeds, such as liquid tomato feed) are great for tomatoes and other fruiting veg.
- Rose feeds are rich in magnesium & potassium.
- Lawns will appreciate a Nitrogen (N) rich feed in spring and a balanced ratio (N:P:K) feed in autumn.
- Container grown plants, annuals and bedding will benefit from a fortnightly general purpose (balanced N:P:K) liquid feed or try making your own from the recipes below.
- Established plants in the ground enjoy a spring and late summer application of organic fertiliser, gently raked into the surrounding soil (I use chicken pellets or blood, fish, and bone), as a top dressing and in the soil around the roots when planting large shrubs.
- Acid loving plants such as Japanese Acers thrive with ericaceous feed.

**Quick tip:** the compost or soil should be moist at the time of application, so water first, then feed!

Fertilisers can help your plants to flourish but without soil conditioners such as mulches, their effectiveness is limited. More on soil conditioning next month.



Please visit my website at [janepearsondesign.com/blog](http://janepearsondesign.com/blog) for a list of my favourite evening scented plants, Readers Question Time and much more!  
[www.janepearsondesign.com/blog](http://www.janepearsondesign.com/blog)

## PLANT SPOTLIGHT Larkspur (Delphinium) & Water Lily

Given as a birth flower for July, the larkspur signifies love and joy. **Larkspur** is the common name given to perennial species of Delphinium and annual species of Consolida. Delphinium, in turn, comes from the Latin word for dolphin, and refers to the shape of the nectar-filled spur of the flower. And larkspur? That's because it resembles the bird's long hind claw.



Larkspur

The larkspur is a classic cottage garden plant, best at the back of a mixed border. It does well in Britain's relatively cool summers, and may struggle in the heat. This is a member of the buttercup family – you'll see the resemblance if you look closely at the leaves.

**The water lily family**, Nymphaeaceae, is native to tropical and temperate regions of the world, including the UK. British natives such as Nymphaea alba look exotic, yet are surprisingly hardy. They flower for six months a year, and cover up to nine square metres of water. There are also miniature species, with teacup-sized flowers that will grow in a small bowl and make a great tabletop or balcony water feature.

At the other end of the scale is the extraordinary giant Victoria Amazonica, the world's largest water lily. This native of the Amazon region has tea tray-like flowers up to three metres in diameter, and caused a huge stir when it made its public debut in Britain. The gardener, architect and Member of Parliament, Joseph Paxton, was the first to bring it to flower, and later used its ribbed leaves as the inspiration for the Crystal Palace.



Water Lily

## THE POTTING SHED THINGS TO DO IN JULY

- Deadhead (remove fading or dead flowers) to encourage more blooms
- Clear algae, blanket weed and debris from ponds
- Pick your courgettes before they become marrows
- Order catalogues for next year's spring bulbs
- Give the lawn a quick-acting summer feed, especially if not given a spring feed
- Autumn crocuses, colchicum, sternbergia, amaryllis & nerine can all be planted now
- Cut back delphiniums & geraniums after the first flower flush to encourage a second flowering period
- Take cuttings of patio and container plants ready for next year
- Start to collect seeds from the plants you want to grow next year, especially annuals such as calendula, poppies and love-in-a-mist

## RECIPE: MAKE YOUR OWN FERTILISER/PLANT FOOD

Home made fertilisers are much weaker than chemical ones but also much safer, cost effective and environmentally friendly. I don't recommend human consumption!

**Nettle Feed:** Add about 1kg, (2lb) of nettles to 10 litres (2 gallons) of water, leave for about two weeks and use at a dilution of 10:1.

**Comfrey Feed:** Add 1kg of Comfrey leaves to 15 litres (3 Gallons) of water and leave for 6 weeks in a sealed container, then use undiluted. **Wormery liquid** should be diluted with water until it's the colour of weak tea, usually at a ratio of 10:1.

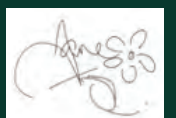
Enjoy!

07811 367320

[janepearsondesign@icloud.com](mailto:janepearsondesign@icloud.com)

The Lynchetts, Icknield Way, Bishopstone

[www.janepearsondesign.com/hints&tips](http://www.janepearsondesign.com/hints&tips)



## Bishopstone & District Gardening Club



**At our regular meeting in June** we welcomed **Steph Head** from **TWIGS Community Gardens in Swindon**. It was first set up in 1997 as a resource for people who experience mental health problems. The aim is to create an environment in which they can regain confidence and self esteem, learn new practical and craft skills, social and communication skills as well as benefit from the therapeutic nature of plants, gardens, and wildlife.

The 2 acre site includes many themed areas including the Cottage Garden, the Faith Garden, Japanese Garden and Wildlife garden plus access to an allotment site. Activities include arts and crafts, woodwork, metalwork, food preparation as well as, of course, gardening. The clients are encouraged to take part in any activity of their choice under the guidance and support of the staff so that after their time with TWIGS they are ready to move on to further education, training or employment with the practical skills, motivation and confidence they need.

Funding for the centre, which has seven paid staff most of whom are part time and fifty volunteers, comes from a variety of sources: the sale of their crafts and plants, open days, sponsorships and grants as well as donations and special events organised by The Friends of TWIGS.

The evening opened our eyes to the needs of those with mental health problems and the way they can be helped on the road to recovery by such a dedicated team in a supportive environment.

### Visit to Rooks Nest, Lambourn Woodland

Our visit to Rooksnest, opened under the National Gardens scheme, was a a superb chance to see the stunning gardens. The weather was kind to us, dry, warm and bright but not too hot to allow us to wander through the varied 'rooms' both formal and informal and enjoy all the different planting, ponds and statues set around the beautiful house and its out buildings. There were roses everywhere, dripping with flowers, lovely herbaceous borders, woodland areas, productive vegetable garden and greenhouses and much more. I'm sure that all who went will have Rooksnest very much on the 'visit' list for next year. Thanks Sarah for suggesting it, a lovely day out.

### DIARY DATES:

**Wednesday 9th August 7pm Bishopstone Village Hall.**

**Mandy Bradshaw, The Chatty Gardener**, who unfortunately had to cancel her talk in March due to bad weather, will be joining us. Her theme will be **'Getting the Right Angle at Chelsea - a journalists view'** a light hearted insight into the 'tricks of the trade' in catching the eye of the judges at shows not only Chelsea and Hampton Court but also our very own BandDGC Gardening Show coming up on September 9th. Its a must for all members planning to enter their flowers, fruit, vegetables and more in our annual event.

**Saturday Sept 9th Bishopstone and District Gardening Show in Bishopstone Village Hall**

Time to start planning your entries. Classes for children and adults covering flowers, plants, fruit, vegetables, preserves, baking, artworks, handicrafts and photography. Something for everyone. Full details of classes available from Chris Thomas

01793 790106. Entries to be submitted by Tuesday Sept 5th, exhibits to be brought to the hall and displayed between 8am and 10.30am. After the judging the hall will open for viewing at 1pm. Awards will be presented at 3pm, followed by a sale of exhibits, any not for sale must be collected between 3.15pm and 3.30pm.

GOOD LUCK everyone!



**Contact: Marion Peck, 01793 791 001**

## Shrivenham & District Gardening Club



### DIARY DATES:

**Our August meeting will be on Thursday evening 3 August** and the topic will be 'Aspects of Fuchsias' by Carole Gubler. Come and learn all about growing and propagating these popular garden plants.

We are very pleased that this year we have a number of new members and usually get visitors attend our meetings who then go on to join.

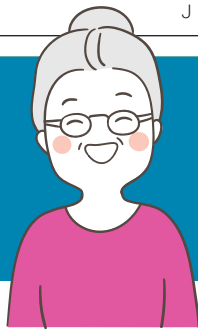
**Visitors only have to pay £3 for the evening and annual membership is £10.**

Meetings are nearly always held on the first Thursday of the month at 7.30 in the Vic Day Room in Shrivenham Memorial Hall.

**Further details can be obtained from our Secretary on 01793 782338.**



# Ask Fanny



## Notes and queries from readers, a response from our local agony aunt...

### Dear Mrs Hole

Thank you for your help in illuminating the fascinating life of the people and activities (not all nefarious, sadly) in these villages.

I have to say how much I laughed when I saw that hapless school parent trying to get her car out of the drain hole on the verge opposite the village hall last month. One wheel way in the air, spinning madly and pointlessly and noisily.

Anyway, this brings me to my point: why do parents park there, sometimes actually on the bend itself, making visibility impossible, and more pointedly, why are they allowed to park there? As people have made plain over the years, one day there's going to be an accident. I wonder if you have a view on such urgent matters?

**Very concerned, Mrs W, High Street, Bish**

### Dear Mrs W

*I had heard reports of this pathetic three wheeled spectacle. On a wider front, I also saw someone in a hi-vis jacket, probably from Swindon Borough Council, being escorted by a tubby fellow round various parts of the village close to the school, and word on the grapevine is that parking alternatives are being discussed. Also on the grapevine, rumours indicate that the alternatives suggested might be vetoed on the grounds of no pavements, no street lighting, slippery verges blah blah (exactly as you'd expect in a village) so kids might be forced to wear their own hi-vis jackets at darker times of year and always be escorted by their parents down the road. I'd suggest, for a start, the people who actually live in Bishopstone and bring their kids to school in a car should be given parking tickets every single day. I know some of you. I see trouble ahead!*

*Mine's a yellow one!*

**Fanny**

### Dear Fanny

The photo in the last issue of the young man cooling off in the Bishopstone pond made me recall the good ol' days when the pond was truly a leisure venue. Someone else mentioned earlier this year the hilarity of the raft race from two decades ago, but these days no-one is allowed to have any fun in it, on it or near it! And the Island appears to be a no go zone too. With the long term closure of The Oasis in Swindon, could something be done to allow safe and responsible fun to happen here again? Is ownership a problem, or possibly public liability? How do we get ownership into different hands?

And another thing...who's responsible currently for the state of the pond? From the young man's photo (and stories from another dipper that day who emerged looking like something from the black lagoon) it would appear to be six inches of water, and four feet of mud and silt. How much would it cost to have the silt removed? Can anyone afford it? What a wasted and beautiful asset. It could be our own wild swimming spot. I can just see Mr and Mrs K going for a quick dive.

**Yours in disappointment, Mr S, Farm Court Bishopstone**

### Dear Mr S

*A very well timed note, indeed, as I head for my annual waxing and look for a bikini that still fits! The pond used to be owned by the Church in some form or another, but memory tells me they wished to divest themselves of their...ahem, responsibilities. There's a surprise! I think the Village Hall or Parish Council have taken charge, and I will ask that fun loving bunch if they have any plans for an Oasis 2. By the way, I'm no agriculturalist but I'd have thought the silt might be good for farmland, possibly*

*instead of that poky old sewage sludge that's used by one of our farming neighbours, combined with tonnes of fertiliser, all of which helps to turn the pond an alluring green colour in warmer temperatures.*

**Yours all a tingle, Fanny**

### Dear Fanny

Here in downtown Hinton Parva we're getting really fed up with the lack of interesting gossip about our exciting village in these pages. There's lots going on here: a thriving LGBTQPlus group, contributions to local theatre, a fascinating telephone box, fast cars and buses often badly parked, narrow roads, regular floods and a very cosmopolitan population including a world class musician. Lots of local specialist traders and craftsmen...I could go on. How do we get you to remember us?

**Yours, Ms DD, Half way up the hill**

### Dear DD

*We all take the short cut through Hinton Parva, past the new horses and wooden buildings in the flood dip of course, so we don't get to see your regular Pride marches, hair trimmers and lawn mowers. We need some correspondence from that exciting location - as you know, around here we can't just make it up! I see that funny looking house is up for sale. Is that where the famous HP wife swapping parties used to be held? Possibly you never went to them—too young, I guess!*

**Naughty, Mrs H**

Mrs F Hole will continue to be delighted to answer any reasonable and unreasonable queries from readers. Email me (Mrs F. Hole) with any queries: [BishopstoneEditor@gmail.com](mailto:BishopstoneEditor@gmail.com)

**MOWERFIXER**

*maintenance/repair service  
mowers, hedgecutters  
strimmers etc.  
for the Ridgeway villages*

**New & 2<sup>nd</sup> hand  
garden machinery for sale**

**0789 979 1833**  
**doug@mowerfixer.co.uk**

# DICKIE'S diary



Chelsea is not long past, with some gardens on show there paying tribute to wildness which has spawned the lawn no-mow movement. We admit to not being supporters, but it is amazing what nature can produce in these situations. A patch left at the White House, Bishopstone High Street, has produced a fresh pink pyramidal orchid this year after many years of mowing. On our own farm, on the Russley Downs, we have a lovely patch of fragrant orchids, probably exceeding other years, but I could only find one example of the rare burnt tip orchid this year. They tend to be unpredictable. I counted fifty-three of these small flowers in 2014. Up the Eastbrook valley there are many common spotted and a good patch of pyramidal orchids. The best site for bee orchids round here lies up the track opposite Odstone farm beyond Kingston Winslow and this year I have spotted 13 there. I am attaching photos hoping the editor has space. We are used to avoiding parking our cars at this time of year under lime trees because of the sticky deposits they produce. However, beech tree leaves this year seem sticky too. Looking



for an explanation, I have noticed that in our garden the beech hedges seems to be harbouring whiteflies in numbers and perhaps they are secreting these annoying sticky deposits. If you are running a shoot, it is likely that you have to buy in pheasant poults, which come in crates from the game farmer at eight weeks to be released into protected woodland pens, where they soon acclimatise and learn to roost, so avoiding the fox, their main predator. Poults are expensive so some larger outfits will buy in day old chicks to grow, potentially saving much cost. This needs plenty of skill to be successful. On our shoot, Philip Curtis has this skill and he has recently released back to the woods his mature laying hens that have produced this year's chicks for him on a site near Bampton. Red Kites are now a strong feature in our sky with their forked tails. The natural world clearly enjoys an advanced messaging service and a week after the release of these ex-layers I counted no less than thirty kites whirling about above them. The RSPB continues to claim they only eat carrion, but these kites have to live.



## JULY PUZZLE: win a £10 voucher

### Across

- 1 Basin I'd stowed in punt (5)
- 4 Strip club finally withdraws audible signal (5)
- 7 Profit derived from seed crop (8)
- 8 Almost having hot drink knocked back (4)
- 9 Card game children might play in break (4)
- 10 Cricketer feeling funny (4,3)
- 12 Wild ocelot might appear (4,2,5)
- 14 Not failing like ships in the night? (7)
- 16 Scheme for part of garden (4)
- 19 Soldier repeatedly seen in musical (4)
- 20 Perhaps I turned to stone (8)
- 21 Make progress in good school (3,2)
- 22 For example, brown back or elbow (5)

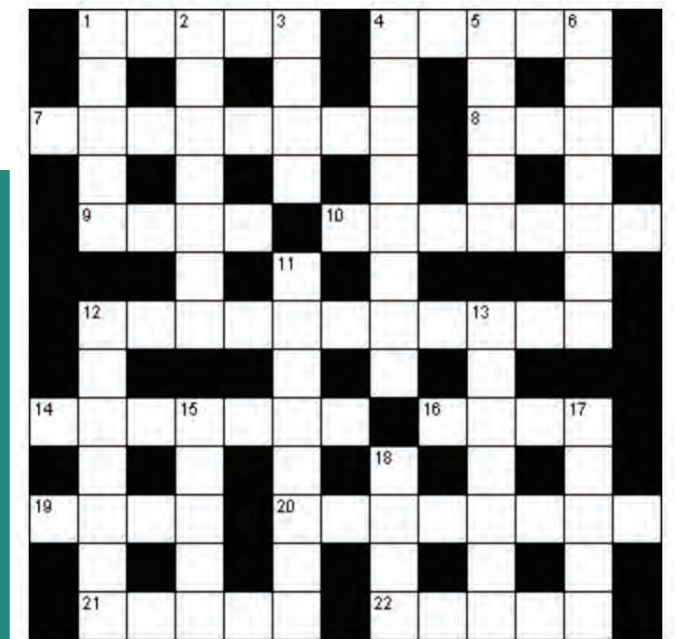
### Down

- 1 Streams revealed by Scottish poet (5)
- 2 Hold forth, having failed medical (7)
- 3 Card held by Burt Reynolds (4)
- 4 Is ballet set in prison? (8)
- 5 Wise change of name for Irene? (5)
- 6 Animal intended to be without a colour (7)
- 11 Is a substitute to tolerate wrongdoing? (6,2)
- 12 Company making cuts - using gentle persuasion (7)
- 13 Festival held for knight (7)
- 15 Saint sheltering family without money (5)
- 17 Wrong end of Dundee cake (5)
- 18 Bridge of small vessel (4)

### JUNE WINNER

**Congratulations Pete Walker for your crossword entry.**  
Please visit Lynne at Helen Brownings shop to collect your voucher.

Email: [shop@helenbrowningsorganic.co.uk](mailto:shop@helenbrowningsorganic.co.uk)



**REMINDER:** Please submit your completed crossword by the end of each month either by foot or by email to Lynne at Bishopstone Stores, who will drag a winning name from a hat if more than one of you is bright enough to complete it. When you read your name in the next edition to say you've won, you can nip back to the shop to be presented with a nice shiny voucher for £10 off your bill at the pub or in the shop.



**June Solution**



# WALK Of the Month



- Moderate**  
4.5 miles  
1.5 hrs.
- On lead near livestock**  
**Hinton Village Grn, SN4 0DW**  
**Muddy after rain**

- FP** Footpath  
**PP** Permissive Path  
**BW** Bridleway

## Walk H1

Hinton,  
The Lane  
& The Vale

A fine circular walk in The Vale - Hinton Village, The Lane & Earls Court Manor



Visit [bishopstoneandhintonparva.org/walks](http://bishopstoneandhintonparva.org/walks) for more info.

© Old Farm House Consultants, 2014

**P** Park on the street near the village green & St Swithun's Church. Keep the church on your right and follow the road down past the Manor. When the road turns left continue straight on to The Lane.

- A** Continue on the lane for 1¼ miles. The paved lane turns into a track. As the track peters out go ahead on a BW signed Horpit & Bourton. Before Hinton Marsh Farm take the FP to the left signed Horpit.
- B** Pass through two fields & gated stiles and continue on over a stile to a gravel path. The path becomes paved and passes Earls Court Manor. On a right hand bend after 2 red brick farm houses take the sign-posted path Signed Hinton Parva.
- C** Follow the line of the FP sign & after ¼ mile follow the hedgeline (on your left) to a stile. 50 yards ahead cross another stile & follow a lovely hidden path in the trees. Continue on this path through fields to a track leading to Home Farm. Pass through the farm via 3 stiles and walk up to the road.
- D** Turn left and descend the road through Hinton Parva for ½ mile to City Corner.
- E** At City Corner take the path straight ahead (it starts slightly to your left). Continue across the fields & pass through two stiles to emerge back into the village by the old chapel.
- F** Turn right and re-trace steps back to St Swithun's Church and your car.

### NOTES FOR WALKERS

- 1 Permissive paths may be closed
- 2 Please leave gates as you find them
- 3 Grass field margins are private not footpaths

**CREATIVE PRINT AND WEB DESIGN SERVICES**

**CREATIVE GRAPHIC DESIGN & ILLUSTRATION**  
**DIGITAL WEB SEO EMAIL FOOTERS**  
**SOCIAL MEDIA ONLINE ADS E-MARKETING**  
**ANIMATION CREATIVE 3D FLIP BOOKS**  
**PRINT LOGOS BRANDING MARKETING**  
**ADVERTISING CREATIVE COPYWRITING**  
**STATIONERY BROCHURES PACKAGING**  
**POS GREETING CARDS BUSINESS CARDS**  
**LEAFLETS FLYERS LARGE FORMAT**  
**BANNERS FLAGS VEHICLE LIVERY**  
**SIGN WRITING PROMOTIONAL ITEMS**  
**MERCHANDISE EXHIBITION STAND DESIGN**  
**AND PRODUCTION AND MUCH MORE**

**INFO@LULI.UK | 07795 086 197**  
**© LULI.UK | 2023**

## The Gadgeteer

### Under Pressure!



Cooking under pressure? We all may do that for a dinner party or family gathering, but pressure cooking is en vogue once again. This month The Gadgeteer tries to simplify the science and demystify the smoke (steam) and mirrors associated with pressure cooking.

The pressure cooker first appeared in 1679 as "Papin's Digester", named for its inventor, French-born physicist Denis Papin. The cooker heats water to produce very hot steam which forces the temperature inside the pot as high as 266 °F (130 °C), significantly higher than the maximum heat possible in an ordinary saucepan. Papin made his objective very clear: "no body can deny that...by the help of the Engine here treated thereof, the oldest and hardest Cow-Beef may be made as tender and as savoury as young and choice meat". The principle was met. Voila! As usual the French have a lot to answer for. Steam, whistles, explosions and subsequently deploying a natural reluctance to accept the practice.

Pressure cooking began in earnest after the war, but the practice was very much in its infancy and it wasn't until the 70's that safety legislation improved and confidence reinstated that pressure cooking found its place. Today, pressure cookers are very safe and are very easy to use. With a pressure cooker, a rich beef stock can be made in under 2 hours rather than 12, making stock-making suddenly economically-viable. I recently tried fishing out some beef bones and a pack of chicken wings from the freezer. Combined with usual veg offcuts and a bouquet garni the resulting stock was magnificent - richer and more delicious than any meat stock I had ever cooked before.

The pressure cooker has evolved into a safe and economical gadget and a sound investment to save energy by reducing cooking time by up to 70%. Costs are saved by batch cooking in bulk. You can simply create dishes with cheaper cuts you never had the time to think off before: Osso Bucco, Moroccan Lamb Stews or even a simple vegetable risotto can be cooked from scratch in eight minutes flat without the need for stirring and adding of stock throughout. The best cookers also have a steaming function so vegetables can be given an intense and instant steam in two or three minutes - the colours and healthy nutrients all retained beautifully. Every home needs a great pressure cooker and this style of cooking has now never been more popular. Featuring on cookery shows like MasterChef when rich sauces or Beef Short Rib can be delivered to the judging tables in times never before believed!

The Gadgeteer recommends Fissler Pressure cookers. They are made from over 90% recycled stainless steel, compatible with all stove tops including induction and they are still produced in their modern factory in the Rhineland Germany. The VitaVit premium has a safety locking lid indicator, four cooking settings, a quick release depressurising valve and a Euro-Matic secondary valve. The pressure these days is carefully regulated at less than 1.5 bar - less than a bicycle tyre - fear not! The automatic traffic light system setting allows you to adjust the heat to ensure optimum cooking temperature is maintained. Green - correct temperature; Red - turn down; Orange - adjust temperature. C'est Bon! Or should I say - sehr gut!!



Fissler available  
From Harrods  
Borough kitchen  
from £199.95

## Inside the Peach Pip

Firstly, I would like to say a huge thank you to everyone who turned up to my final Peach Pip Books event, despite my poor marketing efforts, and to everyone who has helped and supported along the way. The many donations of books I received made it possible to keep a rotating stock of a variety of fantastic books, for which I am enormously grateful. Rest assured, my leftover stock (minus some favourites that will be coming with me to Edinburgh) will be donated to various worthy causes. Alfresco and Bishopstone Primary will benefit, as will the library at The Dorcan Academy, and I believe the rest will be up for purchase at the village fête in September. I haven't asked any of these organisations if they want them yet, but hopefully they do... Otherwise I'll need to hire a bigger van.

It's been a blast, and a learning curve, and I can't imagine a friendlier environment in which to have taken my first stumbling steps in bookselling. Hopefully the next time I trade will be from a permanent shop - watch this space!

I may continue to write book recommendations and updates from afar, depending on whether a) anyone cares enough what I'm reading and getting up to, and b) whether submissions from 400 miles away still count as 'Village News'. For now, I will leave you with this title:

*Days Like These*, by Brian Bilston

Some of you may have heard of Bilston or recognise his poems, as they are all over social media. His writing can be funny and brilliantly clever as well as poignant, often tackling serious social and political topics. In this newest poetry collection, he writes a poem for each day of the

year, taking inspiration from an event that has happened on that day. The poem for the 1st July, 'The Rainbow', commemorates the UK's first official Gay Pride Rally in 1972 and reads as follows:

*The sun's coming out  
brightens the monochrome sky,  
and brings a rainbow  
shimmering proudly,  
its raindrops reshaping light  
into this - an arch  
of triumph, freedom,  
and within, every colour  
the heavens can hold.*

Bishopstone, you have been wonderful.  
Pip pip hooray!  
Anna





# CHURCH NEWS

## A Letter From The Vicar

Dear Friends,

We are coming to that time of the year when we are thinking of holidays, at home or further afield. Our schools are coming to the end of the school year and for some pupils it will be the end of their time at Primary School.

Both Bishopstone & Wanborough Schools are celebrating the time these pupils have been at school locally, all they have learnt and experienced during those years and wishing them well for their future.

It has been a joy and privilege to have the children, and teaching staff, from Bishopstone School in Church every week for their assembly. The Leavers Service will also be in St Mary's Church and they will each be presented with a Bible.

I am sure that all the children and staff are looking forward to the summer holidays as a time of rest, refreshment and renewal. For many of us August will involve travel to various destinations, or staying locally, but what is most important is that we do find the space and time to relax and rest.

It is that rest and relaxation which is important in the balance of life and is something to be welcomed. After all, even God rested on the seventh day – a very good example to follow!

It is not selfish to make time for ourselves but absolutely essential - we owe it both to ourselves and those we love and care for.

So, happy holidays to you all this summer, at home or away - and happy work, rest and play every day!

With love and prayers

Sandy

### Prayer for this time of holidays

Lord God, we put ourselves into Your hands, and pray that You will bless us and our families during the wonderful months of summer. May we all help make our home a place of relaxation, joy, love, peace and safety.

May we be generous and considerate, not thinking only about ourselves, but helping others enjoy the blessings of summertime.

We ask this through Jesus Christ, our Lord. Amen

**Church Services** in the Benefice  
full details on [www.achurchnearyou.com](http://www.achurchnearyou.com)

Day	Date	Time	Venue
Sun	23.07.23	10.30	St Andrew's, Wanborough
Sun	30.07.23	10.30	St Mary's, Bishopstone
Sun	06.08.23	10.30	St Swithun's, Hinton Parva
Sun	13.08.23	10.30	All Saints', Liddington
Sun	20.08.23	10.30	St Mary's, Bishopstone

All dates and times are submitted to the Editor.



### Food for Thought

#### Mobile fish and chip van

Available for private parties,  
weddings and all functions.

Find us each month at Charlbury Stables

(See the diary in this publication for actual dates)

Post Code: SN4 0DW

Tel: 07515 288414

Email: [grahamrowcliffe58@outlook.com](mailto:grahamrowcliffe58@outlook.com)



### PLEASE CONTINUE TO SUPPORT WANBOROUGH CHURCH.

#### Make a donation in aid of the New Roof

More information about this is available from the PCC Treasurer:  
E-mail: [standrewswanborough.treasurer@gmail.com](mailto:standrewswanborough.treasurer@gmail.com)

**Donations** can be made by cash or cheque which should be made payable to "PCC Wanborough St Andrews No 1"

**The PCC Account details for online banking are:** Sort Code 30-98-41 and Account No 00316459

Please donate by **Gift Aid** if you can.

Using this tax favourable method, the Roof Project will be able to claim back from HMRC 25p for every £1 donated.



**I LOVE YOUR GARDEN**

Facelifts by

**ON POINT PAVING**

Groundworks and Hard Landscaping

For a friendly professional estimate  
07748 799995  
[onpointpaving@yahoo.com](mailto:onpointpaving@yahoo.com)  
[www.onpoint-paving.co.uk](http://www.onpoint-paving.co.uk)

**Jane Pearson Design**

**Gardens & Landscape**  
Local Landscape Architect & Garden Designer

**Design-Planting-Consultation**  
Project Monitoring

Creating joyful gardens & landscape infused with your personal style & requirements.

Let's make plans!  
+44 7811 367320  
[www.janepearsondesign.com](http://www.janepearsondesign.com)  
email  
[janepearsondesign@icloud.com](mailto:janepearsondesign@icloud.com)

Pre Registered Member of the SOCIETY OF GARDEN DESIGNERS

**THE OWL BARN**  
A MEMORABLE STAY IN HINTON PARVA

[theowlbarnwiltshire.co.uk](http://theowlbarnwiltshire.co.uk)

**Wanborough Bowls Club**  
Hooper's Field, Rotten Row, SN4 0AN

**Why give bowls a go?**

- It's a fun sport and good for your health
- You don't need any experience
- It's an opportunity to get outside in the fresh air in beautiful surroundings
- We are a friendly, social club
- There are lots of opportunities to play, friendlies and more competitive matches, both within the club and against other clubs.

You are welcome to come to visit, borrow our equipment and have a go with no commitment to join. Email or call the Hon. Secretary to arrange:  
[info@wanboroughbowlsclub.org.uk](mailto:info@wanboroughbowlsclub.org.uk) or 01793 614861

If you do decide to join us, adult membership is just £40 for the first year.

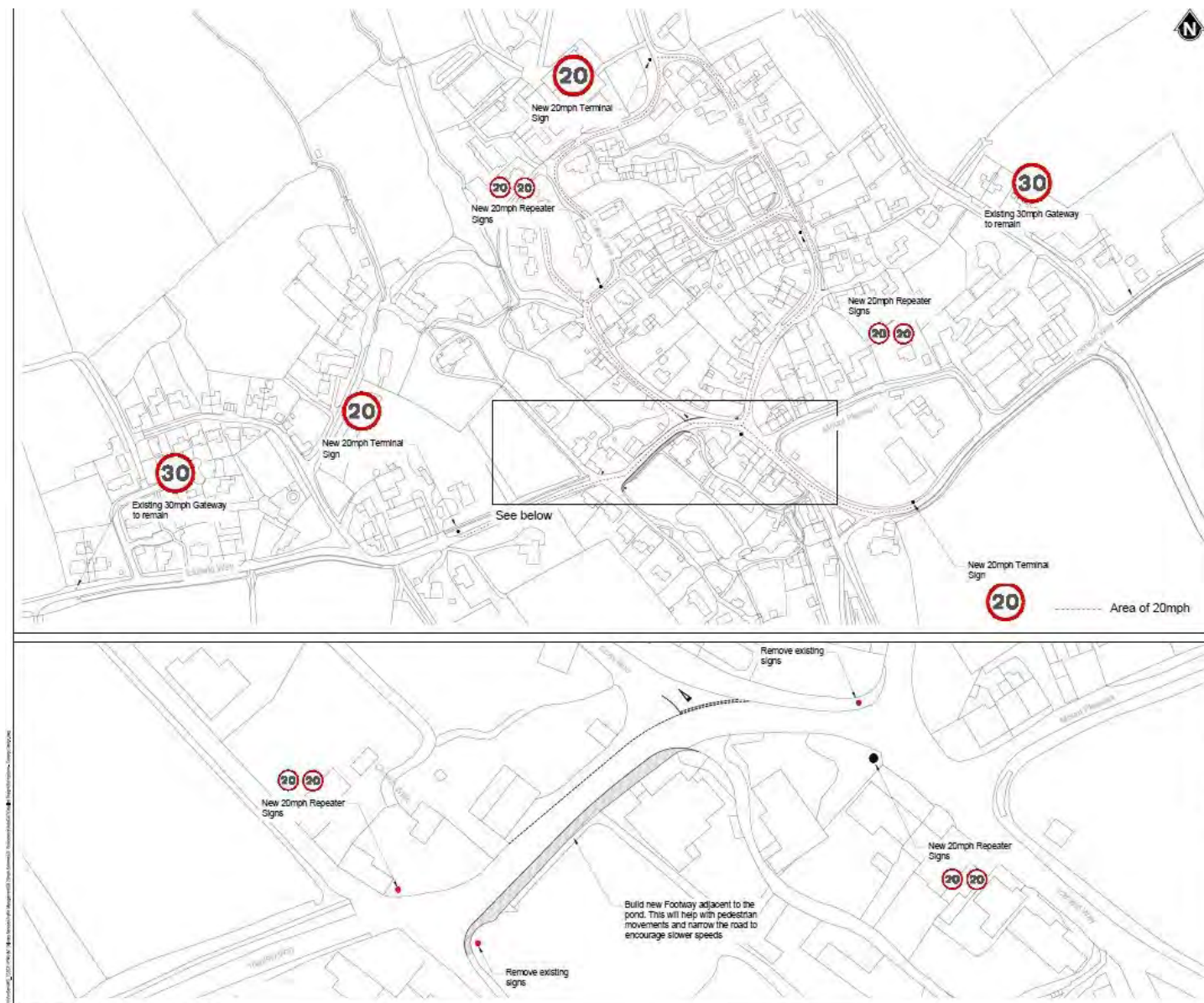
The green will open on Saturday 8th April (weather permitting) and then every day until the end of September. There's lots of parking on site.  
[wanboroughbowlsclub.org.uk](http://wanboroughbowlsclub.org.uk)



# The Parish Times

Bishopstone Parish Council, serving Bishopstone, Hinton Parva & Russley Park

July 2023



## HAVE YOUR SAY ON ROAD SAFETY

Residents' views are being sought on a 20 miles per hour speed limit plan being considered for parts of Bishopstone.

The Parish Council requested this following a survey of residents in February 2022 and Councillor Gary Sumner offered his support via Swindon Borough Council's Ward Members 20mph scheme.

This proposed scheme takes into account residents' feedback from the Parish Council's survey.

Swindon Borough Council is considering introducing a 20mph Speed Limit on

the following roads: Icknield Way, Hockerbentch, Cues Lane, High Street, Poveys Place, The Wyncies and Farm Court.

Prior to Swindon Borough Council starting the statutory process, residents are invited to comment on the proposals, which can be viewed on the Council's website, under the heading of 'Stage 1 – informal consultation' at [www.swindon.gov.uk/trafficregulationorders](http://www.swindon.gov.uk/trafficregulationorders); using the reference H&T/TRO/2023/Bishopstone/20mph

Please review the plans and submit

any comments you may have via the form on the website or by email to [trafficmanager@swindon.gov.uk](mailto:trafficmanager@swindon.gov.uk), by 24<sup>th</sup> July 2023.

All comments will be collated and reported back to Cllr Sumner for consideration of next steps, and whether to proceed to formal statutory consultation. The volume of feedback, both in support of and against the proposals will be taken into account. To follow progress in relation to this Traffic Regulation Order visit [www.swindon.gov.uk/trafficregulationorders](http://www.swindon.gov.uk/trafficregulationorders)

FOLLOW ALL OUR LATEST NEWS ON FACEBOOK @bishopstoneandhintonparvaparish

THE PARISH TIMES FOR BISHOPSTONE, HINTON PARVA AND RUSSLEY PARK

## BE DEFIBRILLATOR READY

Many of us will witness a cardiac arrest in our lifetime. The use of a defibrillator can greatly improve the chances of survival.

The Parish Council has now installed three defibrillators in the Parish. They are located at Bishopstone and Hinton Parva village halls and Russley Park by the horse walker.

The one at Hinton Parva is protected by a code available from the 999 call handler, for speed though put C159X in your phone or on the fridge. The others are always open.

To give you the knowledge and confidence to use one, The British Heart Foundation has produced a 15 minute training video at <https://www.bhf.org.uk/revivr>

The equipment is automatic and when the pads are placed on the body they monitor the heart rhythm and only deliver treatment if required. They can only help and will not harm the patient.

## BISHOPSTONE PARISH COUNCIL

**Ms Jaine Blackman (Clerk)**

Phone: 07913 819422

Email: [Clerk@bishopstoneandhintonparva.org](mailto:Clerk@bishopstoneandhintonparva.org)

**Mrs Val Brodin (Chair)** [Cllr.valbrodin@gmail.com](mailto:Cllr.valbrodin@gmail.com)

**Mr Ian Thomas (Vice Chair)**

[Cllr.ianthomas@gmail.com](mailto:Cllr.ianthomas@gmail.com)

**Mr Julian Cooke** [Cllr.juliancooke@gmail.com](mailto:Cllr.juliancooke@gmail.com)

**Mr Nigel Crisp** [Cllr.crisp@gmail.com](mailto:Cllr.crisp@gmail.com)

**Mr Doug Stevens** [Cllr.dougstevens@gmail.com](mailto:Cllr.dougstevens@gmail.com)

**Mr Tom Green** [Cllr.tomgreen@gmail.com](mailto:Cllr.tomgreen@gmail.com)

**Mrs Gill May** [Cllr.GillMay@gmail.com](mailto:Cllr.GillMay@gmail.com)

**Mrs Lucille McGrath** [Cllr.lucillemcgrath@gmail.com](mailto:Cllr.lucillemcgrath@gmail.com)

**Mr Steve Bell** [Cllr.sbell@gmail.com](mailto:Cllr.sbell@gmail.com)

The Parish Council's policies and documents can be viewed at [bishopstoneandhintonparva.org/](http://bishopstoneandhintonparva.org/)

## PARISH COUNCIL MEETINGS 2023/24

7<sup>th</sup> August **Bishopstone**

4<sup>th</sup> September **Hinton Parva**

2<sup>nd</sup> October **Bishopstone**

6<sup>th</sup> November **Hinton Parva**

4<sup>th</sup> December **Bishopstone**

**2024**

8<sup>th</sup> January **Hinton Parva**

5<sup>th</sup> February **Bishopstone**

4<sup>th</sup> March **Hinton Parva**

1<sup>st</sup> April **Bishopstone**

Meetings begin at 7.30pm.

Late changes are shown at [bishopstoneandhintonparva.org/parish-council/](http://bishopstoneandhintonparva.org/parish-council/) and on the notice boards.

## Useful Information

**Swindon Borough Council: Reception Premier House** 01793 465055/465056; **Civic Offices** 01793 463668; **Wat Tyler House** 01793 463725

**For problems with waste collections call Streetsmart on:** Monday to Friday 8am-8pm 01793 445501; all other times 01793 466453

**Report fly-tipping or pot-holes to SBC:** [swindon.gov.uk/my\\_account](http://swindon.gov.uk/my_account)

**Wiltshire Police non-emergency number (less urgent than 999):** 101

**Borough Councillor Gary Sumner** - [GSumner2@swindon.gov.uk](mailto:GSumner2@swindon.gov.uk)

## PARISH COUNCILLORS' KEY RESPONSIBILITIES

**Finance** Nigel Crisp/Lucille McGrath

**Footpaths and Highways** Julian Cooke (Hinton Parva) Ian Thomas (Bishopstone)

**Pond & Island** Doug Stevens

**Hinton Parva Village Hall** Val Brodin

**Bishopstone Village Hall** Steve Bell

**Hinton Parva Charities** Peter Cooke (PC nominee)

**Bishopstone United Charities** Doug Stevens, Christine Thomas

(PC nominee), Laurie Manktelow (PC nominee)

**Trees** Julian Cooke (Hinton Parva) Ian Thomas (Bishopstone)

**Russley Park Liaison** Nigel Crisp

**Responsible Financial Officer** Jaine Blackman (Clerk)

**Planning** Ian Thomas/Tom Green

**Website/IT** Nigel Crisp

**Policies** Gill May

**School liaison** Lucille McGrath

## CURRENT PLANNING APPLICATIONS

All planning applications, their history and all supporting documents can be viewed at: [www.swindon.gov.uk/planning](http://www.swindon.gov.uk/planning)

Planning issues are discussed at the monthly Parish Council meetings. Public representations are heard prior to the start of the meeting.

**S/HOU/23/0641** Erection of a single-storey infill extension, conversion of garage into living accommodation and installation of a flue to west elevation at 1 Whatleys Orchard, Bishopstone. **Comments by 10/7.**

## LATE RECEIPT OF PLANNING NOTIFICATIONS

**S/HOU/23/0718** Extension to existing garage to provide home office at Charlbury Cottage Icknield Way Bishopstone Comments by 23/7

## PENDING DETERMINATION

**S/HOU/23/0498** Erection of a two storey rear extension, erection of a bay window, replacement windows, removal of chimney stack, heat pump installation and associated landscape works at: Hill Manor House, Hatchet Hill, Hinton Parva.

**S/23/0190** Change of use from agricultural to residential land and erection of 1 no. dwelling (class C3) with detached garage at land adjacent to Westhill House, Hinton Parva.

**S/LBC/23/0392** Erection of a detached outbuilding/ home office. At: Hergest Ridge, Cues Lane, Bishopstone.

## GRANTED

**S/HOU/22/0892** Erection of a two storey rear extension at 2 Grove Cottages, Hinton Parva Lane Hinton Parva.

VIEW THE PARISH WEBSITE AT [WWW.BISHOPSTONEANDHINTONPARVA.ORG](http://WWW.BISHOPSTONEANDHINTONPARVA.ORG)



# VILLAGE hall news



## BISHOPSTONE

### Bishopstone Village AGM 1830 26/6/2023

#### Chairman's Statement Financial Year 2022/2023

This is our Annual General Meeting held to conclude our year 2022/23 activities. It has been a good post Covid Year for the Hall since the restrictions were lifted and I am pleased to confirm the Hall is in good financial health. The Hall remains in good order as one of the cornerstones of the Bishopstone community. Bookings are flourishing with regular contributors such as the School, Piano lessons, Karate Club, Gardening Club and the WI. The Parish Council also has bi-monthly meetings at the hall. We have also seen a number of private events such as birthday parties, a wedding reception, Peach Pip bookshop, and the return of the Rainbow Warriors crèche to name a few. We also hosted the BADS rehearsals and performances late 2022 and into 2023, which generated welcome revenue and active use of the hall. The community stage set prep also served us well for Xmas events last year.

I would like to thank all the committee for their hard work – everyone doing their own bit towards the upkeep – Alec, Steve, Russell, Andy, Anna and a warm welcome back to us Roz. We were delighted to see her return after recovery from illness. Sadly, Anna will leave us shortly but she has done a fantastic job managing and coordinating bookings – we'll miss her and her support.

Film Nights have been a lot of fun but are marginal on our break-even point; we love to run them but we do need more customers. We'll run again this autumn and welcome villager support but if we can't get over 25 people to each showing we may have to reconsider this activity.

The garden areas continue to be a challenge on upkeep but our contractor Pawel has done an excellent job keeping on top of the weeds, grass and hedges. Some proactive steps taken in 2023 to tidy the bank and reduce maintenance with anti-weed matting in place will help us going forward.

Debbie continues to shine with the hall weekly cleaning rota, which is basically Debbie every week! Much appreciated thank you.

Grant funding secured significant monies in 2021/22 and these funds remain on hand once a suitable contractor has been sourced for the advisory work surveyed and recommended to the hall including soffits, insulation and lighting which will futureproof the hall and bring us some energy efficiencies. Tender packs have been issued and remain available.

I am delighted that Village Newsletter initiative is back off the ground and this will always be held with deep regard for Mogs Boon, who has proved to be a hard act to follow. It has engaged a wide team from the community: Andrea Wadsworth, Val Brodin and Tim Finney on editorial, Graham Curley & Russell H advertising, Christine and Doreen on distribution along with the team of very willing delivery helpers. We will have a fund-raising night in the autumn to cover a potentially modest shortfall and we

urge everyone in the village to support this event when details are announced.

Our 2021/22 accounts will be filed online at the Charity Commission and I'd like to thank Andy Pocock who gives up his time to support all the committee activities as well as manging the accounts for us. In particular, during his first year he has managed to straighten out the accounts, clawed back frozen cash from Nationwide, understood and implemented the complexities of the 100/500 club, taken on the additional burden of the newsletter invoicing and collections. As a Chartered Accountant, we are fortunate to secure his services.

Thank you. Richard Walker, Chairman

## HINTON PARVA

### HINTON PARVA BRIDGE CLUB

New members always welcome

Hinton Parva Village Hall

FRIDAY 7PM

For more information, contact

Dale and Jim Mitchell

Email: [hintonbridge@hotmail.co.uk](mailto:hintonbridge@hotmail.co.uk)

Tel: 01793 627301

**VILLAGE HALL HIRE**

Both Bishopstone & Hinton Parva Villages have availability if you would like to hire either of them.

**BISHOPSTONE INFO/BOOKINGS:**  
Jo Homan: [jo@theorchardproject.org.uk](mailto:jo@theorchardproject.org.uk)  
Tel: 07714 745 408  
Hourly rate: £11 residents, £15 non-residents

**HINTON PARVA INFO/BOOKINGS:**  
Janet Hawkins: 01793 791391  
Email: [jaymaybee02@icloud.com](mailto:jaymaybee02@icloud.com)  
Hourly rate: £8 residents, £10 non-residents



We've heard through the grapevine there is an appetite for a regular village Fitness Class or Pilates/Yoga class to be run in Bishopstone.

Should anyone be interested in setting up or running an event please contact: **Jo Homan: 07714 745 408**  
[jo@theorchardproject.org.uk](mailto:jo@theorchardproject.org.uk) for Village hall availability.

## BISHOPSTONE ALLOTMENTS AVAILABLE

On behalf of the Church Commissioners and their land agent Strutt & Parker, several half allotment plots are now available to rent by the local community. A perfect opportunity to grow your own fruit and vegetables.

The price is £8 per half plot per year (April to March)

No permanent structures such as sheds are allowed but low level storage is permitted.

Although livestock cannot be kept, bee keeping is encouraged by the owners.

If you are interested in taking an allotment in Bishopstone, contact **Steve Bell on 07598 185643**



## BURSARIES FOR EDUCATIONAL EXPENSES

Little Hinton Educational Foundation offers bursaries to help young people in our parish with expenses related to their education.

If you are under 25, live in Hinton Parva or Bishopstone, and need help with the cost of books, travel, materials, equipment or other learning resources required for your academic, social or physical education, please get in touch.

We need to know your name, age, address, where and what you are studying, and what costs you could use some help with.

Please write to **Mrs Valerie Brodin, The Coombs, Hinton Parva SN4 0DH** and make sure your application is received before the end of August.



Send us your  
**HILARIOUS  
JOKES!**

Good or bad. Email:  
**BishopstoneEditor@gmail.com**

## Joke of the month

"I said to the Gym instructor "Can you teach me to do the splits?" He said, "How flexible are you?" I said, "I can't make Tuesdays"

Tommy Cooper



## WANTED

FOR THE BISHOPSTONE CHURCH FETE ON SATURDAY 9TH SEPTEMBER

- Items for the Country Larder such as cakes, jams, chutneys, quiches etc.
- Any old crockery for the Smash a Plate stall.
- Any unwanted jewellery, scarves, hats, bags etc. for the Accessories stall.
- Anything for the White Elephant stall.
- Bottle and chocolate Tombola donations.
- And of course, a raffle. Raffle prizes needed.

Please start putting away anything you can think of and we'll take it off your hands near the time.

Please get in touch with me and I can let you know who is collecting what items for the stalls.



Thank you so much. Christine Thomas  
Email: [littlecot2010@hotmail.co.uk](mailto:littlecot2010@hotmail.co.uk)  
or Whatsapp/phone: 07789 414147



## NOTICE OF CASUAL VACANCY

### PARISH OF BISHOPSTONE

**PUBLIC NOTICE IS HEREBY GIVEN** that a casual vacancy has occurred in the office of Councillor for the Parish Council following the resignation of Councillor Doug Stevens on 5th July 2023.

Rule 5(2) of The Local Elections (Parishes and Communities) (England and Wales) Rules, 2006 now applies.

The rule allows for ten local government electors for the Bishopstone Parish to request the Returning Officer to hold an election to fill the vacancy. That request must be made within **fourteen days** excluding dies non. The fourteen day notice period ends on 26<sup>th</sup> JULY 2023.

Requests must be made in writing to Returning Officer, Electoral Services, Plus One Centre, Civic Offices, Euclid Street, Swindon Borough Council, SN1 2JH.

If a request for an election to fill the said vacancy is made in writing to the Returning Officer, by TEN electors for the said Parish, an election will be held to fill the said vacancy.

If a request to hold an election is not received during the permitted time period Rule 5(5) of the above rules will apply. The Parish Council must, as soon as practicable after the expiry of the fourteen-day period, co-opt a person to fill the vacancy.

This notice is dated 7th day of July 2023.

JAINE BLACKMAN  
Clerk to the Council  
BISHOPSTONE

## RECOLLECTIONS OF BISHOPSTONE LIFE IN THE 1800'S

### PART THREE



### The Tailor and Breeches Maker

One of the best know parishioners of Bishopstone in the latter part of the 19th & the beginning of the 20th Century was Mr John Povey. Tailor & Breeches maker

of High Street, he was known for miles around, & was patronised by all the Gentry. I have heard he used to ride a Velocipede, the only one in the district. He could; often be seen driving a pony & trap. He always had a good home-brewed beer to offer his customers. In addition to tailoring he also made leather gloves & leggings.

His wife & daughter kept a small Shop, the only one in the village in which you could buy anything in the way of medicine, or brads & nails of any description, also flower seeds in the spring. As well as this they sold paraffin oil.

Mr John Povey was one of the Church Wardens for a great many years. His eldest daughter was voluntary Organist for over 30 years.

In the Village at that time our Fire Engine was estimated to be at least 300 years old, & still in working order. Mr J Povey was Captain of the firemen. When the new Fire Engine was brought in 1905 his son Mr Frank Povey was Captain of the young firemen.

Thank you again, Sue Waldek for sharing your findings.

## Well Hung Framing by Kate Herbert

I am Kate, your local bespoke picture framer.

I have a passion for framing and enjoy working collaboratively with my clients in selecting the best mounts and frames for all projects and budgets - from box framing, medals and memorabilia to paintings, prints and certificates. I also offer frame repairs and reglazing.

Please call, text or email to arrange a visit to my studio in Watchfield to discuss your requirements.

07710 348 263 bykateherbert@gmail.com

Check out my website  
for further information

wellhungframing  
wellhungframing.co

## Rachel Payne Professional Hairdresser

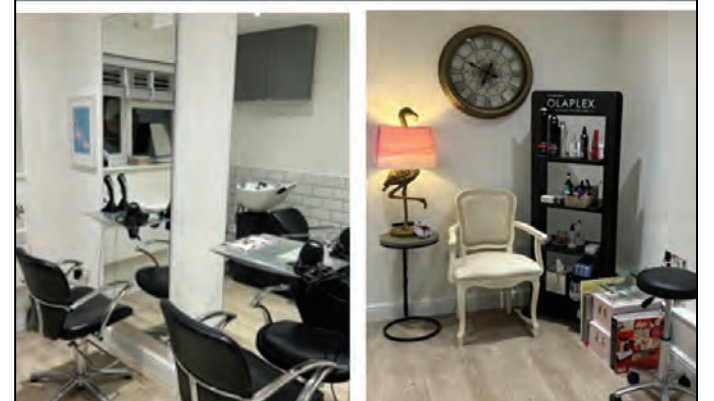


Established 25 years

Based in Bishopstone

Olaplex, Moroccan Oil  
& Schwarzkopf Treatments  
Available

For Appointments & Consultations  
Contact 07527 607947



## Bryn Llinos

A holiday cottage close to Beddgelert in the heart of Snowdonia

4\* Rated with 5\* Reviews

Excellent for beaches, mountains, walking, cycling and mountain biking

Heritage steam railway just 50 metres away at Nantmor Halt (Porthmadog to Caernarfon)

Discounts available for local residents to Bishopstone, please contact: brynllynos@yahoo.com

www.holidaycottages.co.uk/cottage/64657-bryn-llinos



## GRANT FRASER TOWN & COUNTRY



We are a family owned, fully independant company who take pride in getting customers moved onto their next milestone in a simple and stress free way.

If you are thinking about selling your property, to arrange a **free** no obligation valuation today, contact:

01793 228 440  
07737 745 231  
grant@grantfraserc.co.uk

## PUBLIC NOTICE

SWINDON BOROUGH COUNCIL

SECTION 14 - THE ROAD TRAFFIC REGULATION ACT 1984

NOTICE OF TEMPORARY ROAD CLOSURE  
- HINTON PARVA LANE, HINTON PARVA, SWINDON

This Order is being introduced for THAMES WATER works and will impose a restriction on driving on Hinton Parva Lane at City Corner outside West Hinton Cottage.

Traffic to be diverted via City Corner, Body Horse Hill and vice versa.

The Order comes into force on the 16 August 2023 for 6 months but it is anticipated works will take place between 16 to 18 August 2023.

Strategic Transport  
11 July 2023

For further information please contact:  
NetworkCoordination@swindon.gov.uk quoting reference STR000653.  
For more details of road works and road closure around the Borough please visit [www.swindon.gov.uk](http://www.swindon.gov.uk)

## PUBLIC NOTICE

SWINDON BOROUGH COUNCIL

SECTION 14 - THE ROAD TRAFFIC REGULATION ACT 1984  
NOTICE OF TEMPORARY ROAD CLOSURE  
- HAM ROAD, SWANBOROUGH

This Order is being introduced for BEWLEY HOMES development and will impose a restriction on driving on Ham Road at the junction with Church Road.

Traffic to be diverted via B4192 to Commonhead Roundabout, Pack Hill and vice versa.

The Order comes into force on the 7 August 2023 for 6 months but it is anticipated works will take place on the 7 to 21 August 2023.

Strategic Transport  
11 July 2023

For further information please contact:  
NetworkCoordination@swindon.gov.uk quoting reference STR000660.  
For more details of road works and road closure around the Borough please visit [www.swindon.gov.uk](http://www.swindon.gov.uk)

## Photo of the month



Sunset over Hinton Parva

CONGRATULATIONS Kaycee from Hinton Parva for capturing this incredible sunset. Look at that colour! Hopefully we'll see more of your photography in the future.

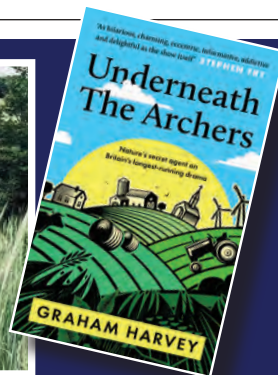
Achieve local fame with your photographic skills. The lucky winner will be chosen by the team each month. They will have their photo printed in full colour, right here, for the whole community to see.

SEND US  
YOUR SNAPS

Email:

BishopstoneEditor@gmail.com





## The Royal Oak Diary



I have been amused by the considerable interest shown in Bishopstone's (and no doubt Hinton Parva's) grassy and verdant verges, on my occasional forays onto the B and HP Facebook page. When the moderator lets me on, of course. I've always felt that driving has been made too easy, so we can effectively move along in neutral while thinking of what we might do at the weekend. A few natural obstacles, e.g. cow parsley, the occasional free range cow, giant hogweed, orchids and other simply beautiful things might actually force us to concentrate on the road and any potential traffic hazard ahead.

I'm old enough (surely not sir!) to recall a trial conducted by the farsighted Dutch a few years ago. They thought there were too many instructions and advisory notices (road furniture) for motorists to look at, so it took the decision-making away from the motorist and effectively allowed the driver to think about, and do, almost anything else, such as rolling cigarettes, giving the children a good clout (clearly some time ago) and having a quick shave on the way to work. The Dutch took away all the double bend signs, the slow down flashing lights, the roundabout ahead warnings, and sure enough people started to have to think for themselves, and put their razors and rizlas away, and let the children continue to scrap in the back. Having said all this to entertain you, and no doubt to severely irritate some of you, it was apparently inconclusive. But you get the gist, I suppose. We are all nannied, to an extent. I suppose the answer is to trim the verges where essential (and I see that one village hero has been out and about doing something with his enormous strimmer) and the other answer is, quite simply, to drive more slowly, or more observantly, where the going gets a bit tricky. Why should we continue to smash our little bits of roadside beauty just to allow us to drive a bit faster?

Anyway...moving swiftly on...and having made a few more enemies on the way...a couple of words about what this column is for, viz, the extraordinary levels of entertainment and high culture at Bishopstone's worst pub and hotel. For those of you with an inkling for that everyday story of country folk, also known as **The Archers**, the prolific **Graham Harvey** is speaking here over supper on **September 14th**. His latest book is **Underneath the Archers**, published next month by Unbound (one of those crowdfunded thingys), and it promises much more than the country folk saga millions still listen to, indeed in some cases that I know are addicted to!

Graham was a script writer and agricultural story editor of **The Archers** for about 20 years up to four years ago, so he knows a thing or two about Eddy Grundy and co. Catch him over supper here on **September 14th**, there's room for 45 of you, and it's £45pp. I think booking is essential.

The week before that, **September 6th**, the **Andy Cato/Groove Armada DJ set** is playing at the north end of Eastbrook (Lower Farm, on the Bourton Road); along with support from Big Mudfish - blues rock - and Hooch, our pub favourites. It's all part of Eastbrook's National Agroforestry Show, **September 6th and 7th**. Interest is high, since it's the biggest thing in Bishopstone since Belinda Carlisle took us all by surprise in 2017. We have 250 tickets to sell, at £35 each, and so far we've sold about 150 of them. If you go the agroforestry event itself, you get

free access. If it's just the evening, you have to come via the pub. Tickets, or something similar, will be available to collect and pay for during August. We're keeping a very old fashioned paper based list of people who want tickets, so join it if you want. I saw clips of this set playing at another low key event two weeks ago, and he was fantastic. If we make any money out of it, half of the profit's going to the Soil Association charity, where Helen runs a team of 250 people trying to make farming (and grass verges) a bit nicer for us all.

Before that, we have a **mini-Pigstock on August 19th**, where we'll do some mini farm tours and guided walks from midday (flora and fauna, livestock, geography etc), and have some simple but lovely music in the garden from 3-8pm ish. Free entry to everything, but we'll charge £5 per family/group for the tours and walks, if that's ok.

We also serve very nice beers and gins, and the housekeepers (led by the remarkable Sarah Hoyland and Julie Anger) keep a very tidy bedroom. Welcome also to our new French, Ghanaian, NZ and Czech worker bees this month. We've smuggled them all in, of course, right under Mrs Braverman's nose.

TF



@helenbrowningsorganic



## SWINDON SKI & SNOWBOARD SERVICING

**WWW.SWINDONSKI.CO.UK**  
enquiries@swindonski.co.uk

Ian Thomas 07778 807783



**Enviro**  
PEST CONTROL

We are a local business providing a professional and friendly service to commercial and domestic customers in Bishopstone and all surrounding villages.



Fully qualified - Insured - 30 years experience

10% discount off standard rates with this ad

Mobile - 07379 276187

Email - enquiries@enviropestcontroltd.co.uk

www.enviropestcontroltd.co.uk

## BARNES COACHES

01793 821303 | [BARNESCOACHES.CO.UK](http://BARNESCOACHES.CO.UK)

NEW 2023 Holiday Brochure OUT NOW!

Includes exciting new UK & European tours for 2023! Request your free brochure today.

## BARNES

2023 UK & European

## Coach Holidays



FREE\* HOME PICKUP & DROP OFF SERVICE AVAILABLE ON HOLIDAYS 4 DAYS & OVER!  
\*See our website for our free pickup area.

01793 821303  
[barnescoaches.co.uk](http://barnescoaches.co.uk)

Est.1986

# Chappells

ESTATE AGENTS



rightmove



Sales • Lettings • New Homes

Specialists in village property for over 35 years.

Contact us now for your free valuation



01793 618080



[sales@chappells.uk.com](mailto:sales@chappells.uk.com)



[lettings@chappells.uk.com](mailto:lettings@chappells.uk.com)





## OVER 400 WALKERS TAKE PART IN NORTH WESSEX DOWNS WALKING FESTIVAL

2nd - 11th  
June 2023



Over 400 walkers took part in the third North Wessex Downs Walking Festival which finished last Sunday. Twenty-six walks have taken place over nine days. There were events across the area including walks starting from Devizes, Whitchurch, Uffington, Pangbourne and Marlborough - to name just a few. The North Wessex Downs has top class walking country on offer and the walking festival is the perfect opportunity for residents and visitors to explore more of this fascinating and beautiful landscape.

This year walkers have heard intriguing stories from the past, discovered wildflowers and butterflies, strolled across farms, explored the Ridgeway, learnt about ancient trees and even practised their art journaling skills with the support of a professional artist. Walk leaders have included local historians, farmers and land managers, a Savernake Forest ranger as well as knowledgeable community walk leaders. at [www.northwessexdowns.org.uk](http://www.northwessexdowns.org.uk)



Walbury Hill walk Credit Jackie Browne



Walkers on the geology walk from Ashdown House Credit Jacky Akam

Ann Shepley, Communications Officer from North Wessex Downs AONB said:

*"This year's walking festival has been our best yet with a huge diversity of walks across the AONB. We have been particularly pleased to be able to offer walks on a number of farms where we have been working with farmers on activities which are having a direct and positive impact for wildlife and nature. Walkers have come from as far afield as Brighton and West London to take part. We are extremely grateful to all our walk leaders, most of whom are volunteers, for helping us deliver the walking festival."*

To hear about future walking events, sign up to the North Wessex Downs newsletter via their website at [northwessexdowns.org.uk](http://northwessexdowns.org.uk)

For more information please contact:

Ann Shepley, Communications Officer, North Wessex Downs AONB

E: [annshepley@northwessexdowns.org.uk](mailto:annshepley@northwessexdowns.org.uk) | Office: 01488 685440 | Mobile: 07810 637387



A healthy and productive garden starts with healthy soil.

Use Soil Improving Mulch from Apsley Farms this Spring!



- 100% sustainable
- A by-product of green energy
- Free from peat, weeds, pests & waste
- Suppresses weeds
- Rich in N, P and K nutrients
- Repels slugs and snails
- Locks in moisture
- Available in 730 litre bulk bags



**£90 SPECIAL OFFER!**  
**730L mulch bulk bag plus 10L Plant Food with FREE delivery\***  
Our Natural Plant Food is organically certified. Available in recycled 5L containers.  
\*central UK postcodes.

[sales@apsleyfarms.com](mailto:sales@apsleyfarms.com)

01264 554433



## Pearce Funeral Services



- PROFESSIONALLY QUALIFIED
- CHAPEL OF REST
- HOME VISITS AVAILABLE
- ONLINE FUNERALS AVAILABLE
- RECOMMENDED IN THE GOOD FUNERAL GUIDE
- COMMITTED TO THE FAIR FUNERAL PLEDGE 2021

2021  
**FAIR FUNERALS**

By signing the pledge, we have made a commitment to be open with our families about the costs involved in funerals and to ensure that we always offer the most affordable options to help them to plan a funeral that is within their means.



92 Ermin Street, Stratton St Margaret, Swindon, SN3 4NN | 01793 832 072

1 Groundwell Rd, Swindon SN1 2LT | 01793 422422

[www.pearcefuneralservices.co.uk](http://www.pearcefuneralservices.co.uk) | [Info@pearcefuneralservices.co.uk](mailto:Info@pearcefuneralservices.co.uk)



**EDWARD BAYS Ltd**

## PLUMBING & HEATING

**01793 763790**  
[www.edwardbaysltd.co.uk](http://www.edwardbaysltd.co.uk)



## London to Paris 2023



**FCN**  
THE FARMING  
COMMUNITY  
NETWORK

**19th-23rd July**  
**- 309 miles in 4 days!!**

To make a donation, visit:  
[www.justgiving.com/fundraising/julian-cooke2](http://www.justgiving.com/fundraising/julian-cooke2)

## A FARMER ON A BIKE!!!

They say you will never see a farmer on a bike; well I'm the one to prove you wrong!!

Hi, my name is Jules Cooke from Church Farm, Hinton Parva and my love of cycling has been rekindled following a mental health illness 18 months ago.

I find cycling a great way to take your mind off things and enjoy the sights and sounds of the countryside. I have always wanted to challenge myself with my cycling and so, back in November, I registered for an organised event cycling from London to Paris, which takes place on the 19th to 22nd of July. I am raising funds for FCN (Farming Community Network), a charity and voluntary organisation that supports farmers and families within the farming community through difficult times.

We will be setting off from Croydon on the 19th July, although I am cycling into London beforehand to begin my adventure at Big Ben, cycling on the first day to Dover where we board the ferry to Calais. We then cycle to Arras, Compiègne and onwards on the last day to Paris, ending the ride at the Eiffel Tower.

I am planning to post a few pictures and videos along the ride to my "Just Giving" page, so if you have a few minutes, please check it out. There you'll also find more info about supporting me if you feel able.

Thank you, Jules.



## HERITAGE TREE CARE

Professional Tree Surgeons

**Comprehensive Service**  
**Qualified Staff**  
**Fully Insured**

- ✓ Pruning and Shaping
- ✓ Felling and Removal
- ✓ Hedge Cutting
- ✓ Stump Grinding
- ✓ Tree Planting

Free quotations and advice  
Call Ian Walding (N.C.Hort / N.D. Arb)

**01793 790210**

Email: [ian@heritage-treecare.co.uk](mailto:ian@heritage-treecare.co.uk)  
[www.heritage-treecare.co.uk](http://www.heritage-treecare.co.uk)



## Watchfield Opticians

Opening hours:  
**9am – 5:30pm Monday to Friday**  
**9am – 1pm on Saturday**

Your local Opticians situated next to the Co-op in Watchfield.  
With parking available right outside and easy access.

Full Eye Examination.  
OCT and OPTOMap scanning.  
NHS funded eye tests available for those eligible.  
Children's Eye Test.  
Contact Lenses.

Hearing Tests and Ear Syringing.  
Great choice of glasses and sunglasses to suit all tastes and pockets.



2 Majors Road, Watchfield, SN6 8TQ  
T: **01793 783848** E: [info@watchfieldopticians.com](mailto:info@watchfieldopticians.com)  
[www.watchfieldopticians.com](http://www.watchfieldopticians.com)



# WEBBS

## Builders Merchants

Established for 4 generations

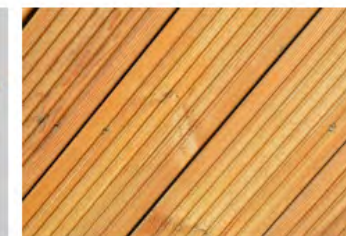
Well stocked, high quality products at competitive prices



Fencing



Garden Paint



Decking



Building Materials



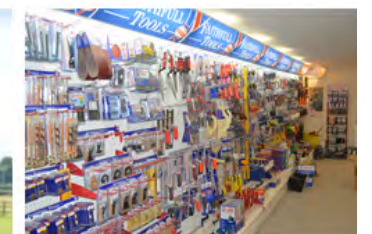
Treated Timber



Custom Gates



Railway Sleepers



Hardware Shop

Friendly staff - always eager to help

Local delivery available



Open Monday to Friday 7:30am to 5pm, Saturday 8 am to 12 noon  
Please note we are not open on bank holidays

WEBBS, Southdown Farm, Faringdon Road, Longcot, Oxfordshire, SN7 7UA  
(please do not follow sat nav)

**01793 783 879**  
[sales@webbswood.co.uk](mailto:sales@webbswood.co.uk)  
[webbswood.co.uk](http://webbswood.co.uk)





**FIND US  
ONLINE**

www.bishopstoneandhintonparva.org

f /groups/bishopstoneandhintonparva

# General Information

Send us your  
**DIARY DATES**  
Email:  
**BishopstoneEditor@gmail.com**

## Contributions

If you'd like to write an article or submit any photography please email Andrea for consideration in the next issue. We aim to distribute the newsletter on or around 15th of each month.

**DEADLINE** for any considerations will be the last day of the previous month but we welcome submissions sooner.

If you would like an advert designing for placement in the village news, please contact Andrea who is offering a discounted rate for Village News adverts.

## We are a non-profit organisation

The Village News is created and run by a small group of volunteers and is a non-profit organisation affiliated to Bishopstone Village Hall. Reg Charity no 271165.

If you would like to make a donation to help with the upkeep please contact Treasurer Andy P, or there are additional copies available and a donation box on the counter in Bishopstone Stores.

## Team

### ADVERTISING:

**Graham Curley**  
graham.curley42@gmail.com

**Russell Hatch**  
russell\_hatch@ebamooba.co.uk

### PUBLISHING EDITOR:

**Andrea Wadsworth**  
andrea@luli.uk

### SUB-EDITOR:

**Val Brodin**  
valbrodin@gmail.com

### CREATIVE COPY:

**Tim Finney**  
**Richard Walker**  
richardw@eddingtons.co.uk

### TREASURER

**Andy P**  
andrewpocock@yahoo.co.uk

### DISTRIBUTION:

**Christine Thomas**  
littlecot2010@hotmail.co.uk

**Doreen Cooper**  
01793 792 965

## Diary July/August 2023

2023	Time	Event	Place	Contact
20.07.23	7pm	Adult clothes swap: The Hub (pg. 2)	56 High St. Shrivenham	sustainablesshrivenham.com/events
22.07.23	9.30am - midday	Repair Café: The Hub (see pg.2)	56 High St. Shrivenham	sustainablesshrivenham@gmail.com
28.07.23	9.30am - 12.30pm	Art of Jaipur Workshop	Bishopstone Village Hall	jo@theorganicproject.org.uk
03.08.23	7.30pm	Shrivenham Gardening Club Aspects of Fuchsias (pg. 5)	Shrivenham Memorial Hall	01793 782338
09.08.23	7pm (pg 5)	B&D Gardening Club - Mandy Bradshaw Chatty Gardener	Bishopstone Village Hall	Marion Peck 01793 791 001
11.08.23	5pm-8pm	Food for Thought Mobile Fish & Chip Van (see pg 10)	SN4 0DW	grahamrowcliffe58@outlook.com
12.08.23		Crafter's Workshop: The Hub	56 High St. Shrivenham	sustainablesshrivenham.com
19.08.23	from midday	Mini Pig-Stock. Mini farm tours & guided walks (pg 18)	Eastbrook Farm	01793 790 481
19.08.23	3-8pm ish	Music in the pub garden (see pg 18)	Royal Oak	01793 790 481
26.08.23	9.30am - midday	Repair Café: The Hub (see pg.2)	56 High St. Shrivenham	sustainablesshrivenham@gmail.com
28.08.23	Summer Bank Holiday			
06.09.23		Groove Armada/Andy Cato DJ set. (see pg. 18)	Info through Royal Oak	01793 790 481 tickets
06/07.09.23		National Agroforestry Show and Exhibition (see pg. 18)	Eastbrook Farm	01793 790 481
09.09.23	1pm	B&D Gardening Club Show (see pg 5)	Bishopstone Village Hall	Chris Thomas 01793 790106
14.09.23	Supper	Graham Harvey, The Archers speaking over supper	Royal Oak	01793 790 481 bookings
1st Tues of month	6-7pm	Sounds Like Women Radio Show	Swindon 105.5 fm	Hosts: Mandy, Tracy & Luiza
2nd Thurs of month	7pm Start 7.30pm	WI: Bishopstone and Hinton Parva WI	Bishopstone / Hinton Parva Village Hall	Jan Chapple janatwan@icloud.com

**Church Services**, please see **page 10**  
**Parish Council Meetings**, please see **page 13**

The views of individual writers expressed in this magazine do not necessarily reflect those of the editors, the parish council or the church. If you have any feedback or questions, please contact one of the editorial team listed to the left. Apologies for any stray typos. We do try hard to catch them all but occasionally some escape.

You may also deliver items by hand to Bishopstone Stores and Lynne will kindly pass anything on to us. Please make sure that you include any names and contact details so that we may get in touch with you. None of these personal details will be published unless we are specifically asked to do so.

Tell us your thoughts!  
**'LETTERS TO THE EDITOR'**  
Email:  
**BishopstoneEditor@gmail.com**

Dates are correct to the best of our knowledge at time of going to print. Please see Facebook for any interim updates.