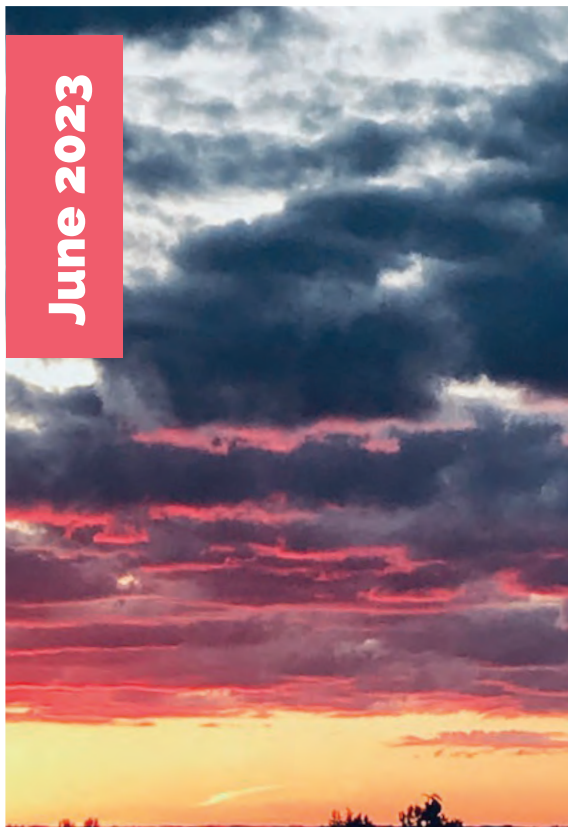


VILLAGE NEWS

June 2023

Ian Brown's Moody Sunsets, Bishopstone.

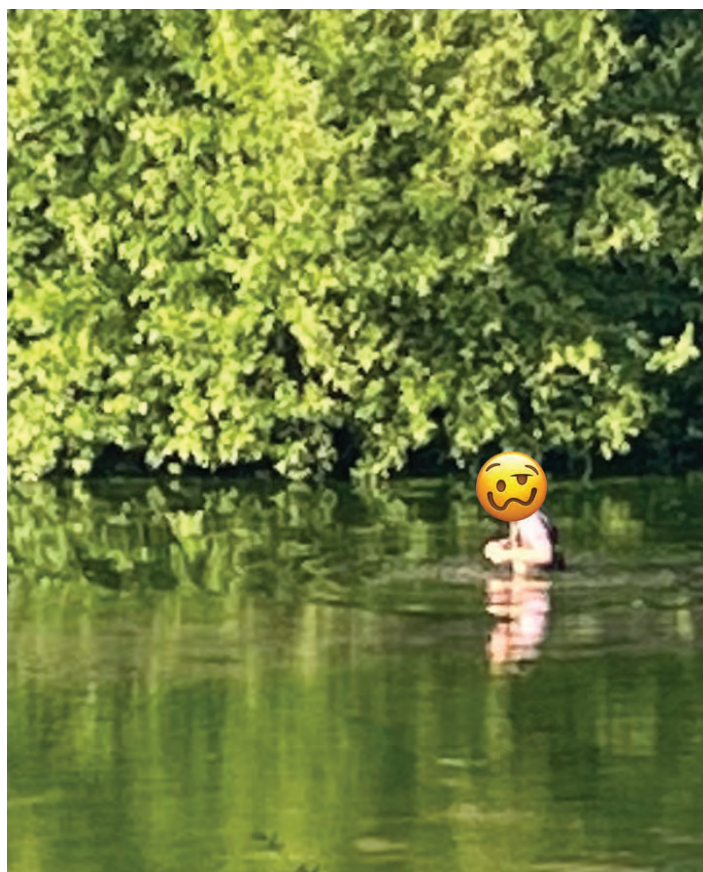
Beautiful Sunsets
Need Cloudy SkiesMAN GETS
STUCK IN POND

Dear Editor,

My attention was drawn last Sunday whilst walking home from a day at the pigs, to some apparently inebriated, party-people who must have been overheating after a day in the sun. A couple of them had decided to take to the pond for a dip. Apart from the dreadful smell that was disturbed and spread across the village from the front-crawler and the ducks and wildlife scarpering, terrified from the commotion, I also saw a second individual who appeared to have sunk up to his waist in the silt unable to move. I believe he was attempting to wade through the first man's slip-stream. Is he still there? Our poor wildlife! I wonder if they've been feeling unwell at all this week.

Good grief! What on earth were they thinking? I would hope that they weren't local as I'm sure that our lovely villagers would know better. Hopefully they aren't now suffering from Weil's disease.

The Parish Council, which is also aware of these silly antics, has stated "We do not advocate entering the pond in any circumstances, as this may be dangerous and disturb nesting birds and endangered wildlife."





In May we held a talk on the pros and cons of Electric Cars and in June a workshop on No Dig Vegetable Gardening in partnership with Eastbrook Experiences at the Royal Oak, Bishopstone and given by Rebecca Brain from Soil Song Nursery.

The next Repair Café will be on Saturday 22 July from 0930-1230. One item only please and nothing too large. Our trusty repairers can attempt to repair everything from a table lamp to a vacuum cleaner and a snagged jumper to an electric fire. They can also do tool sharpening. Our crafting morning is held on the second Saturday each month and anyone is very welcome.

We now have two more bulk containers to add to the washing-up liquid and laundry detergent, i.e. all-purpose cleaner and handwash. Either bring your own bottle or we can provide one.

We are now only accepting donations to our Thrifty-50 Shop and Craft Scrap Store on a Saturday.

Up and coming events include a Bric-a-Brac sale, a book sale (fiction only) and an adult clothes exchange. Please visit our website or Facebook page where you will find further details. website www.sustainableshrevenham.com, Please email us with any comments to sustainableshrevenham@gmail.com



FREE ENTRY!

FRIENDS OF RIDGEWAY: COMMUNITY & EVENTS

SUMMER FETE

★ **SATURDAY 1ST JULY** ★
★ **11AM - 3PM** ★

SCHOOL UNIFORM SALE ★ RAFFLE
NAIL BAR ★ SOAK THE TEACHER
CRAFT STALLS ★ ADOPT-A-TEDDY
TOMBOLA ★ REFRESHMENTS
CROCKERY SMASH ★ SPLAT-A-RAT
FACE PAINTING ★ HOOK A DUCK
PENALTY SHOOT-OUT

PLUS MORE FUN & GAMES FOR ALL AGES!

CONTACT: FORCE@RIDGEWAYSCHOOL.COM
RIDGEWAY SCHOOL, WROUGHTON, SN4 9DJ

Made with PosterMyWall.com

RECYCLING MATTERS



Short and sweet from me this month as life has been a bit hectic! Fabulous news though – the amazing Sustainable Shrivenham Hub is now accepting empty medicine blister packs! Last month's prayers have been answered! The Hub recycle them through the

Terracycle company but unfortunately because they cost so much to recycle, the Hub are having to pass on some of that charge. You purchase a bag for £3 which you then return once full – to purchase another bag and continue again. My top tip would be to cut up any larger blister pack sheets to make the most of what you can get into the bag. Anyway – great news!

Another potentially timely tip, if you've been putting in your bedding plants or clearing out the garden shed, is that the Hub can now find a new home for any plastic plant pots you no longer need. The pots can be any colour or size, don't even have to be washed out, but can't be broken as they will be re-used by a local plant nursery.

Karen Walker



WWW.BLOOMFIELDSFINEFOOD.CO.UK

Award winning
**DELICATESSEN
COFFEE SHOP
& FOOD TO GO**

*Bloomfields
fine food*

Best in Local, Regional
and International Food
Since 2006!

*Hamper
Making
Service*

WWW.BLOOMFIELDSFINEFOOD.CO.UK

OPEN DAILY

EAT-IN AND TAKEAWAY
DELICIOUS, HOMEMADE
FOOD. BREAKFASTS, LUNCHES
MEALS. COFFEE & TEAS,
SANDWICHES & BAGUETTES,
SALADS, SAVOURIES, SOUPS,
PLUS LOTS MORE..

Outside Catering

ARTISAN CHEESES · OLIVES
FRESH BREAD · PRESERVES
PIES · DAIRY · SAUSAGES
DOUGHNUTS · LOCAL ALE
HOMEMADE CAKES · FRUIT
& VEG · CIDER, WINE & GIN

And lots more...

SHOPS 8 HIGH STREET, HIGHWORTH T: 766399
33 HIGH STREET, SHRIVENHAM T: 783999

FOOD TO GO PRICELIST ONLINE AT WWW.BLOOMFIELDSFINEFOOD.CO.UK

**SHOP
OPENING
TIMES**
WEEKDAYS
8 - 4pm
SATURDAY
8 - 3pm

Bishopstone Stores

With the mild, lighter evenings and the longest day of the year almost upon us there are lots of things to be excited about....

We have survived the veg growers 'hunger gap' and will now begin to see a rainbow of Professor Richardson's wares. From courgettes to cucumbers and potatoes to peas they will be a plentiful supply making its way into the shop in the coming weeks as the polytunnel bursts its seams! Keep a close eye on our Facebook page (Helen Brownings Farm Shop) and our Instagram (Bishopstone Stores) for regular updates of what lovely fresh produce is available.

With fresh produce in mind, don't forget that we get three deliveries a week (Tuesday, Thursday, Saturday) from the wonderful Astons Bakehouse in Hungerford. They use Eastbrook Farm organic wheat to make their artisan organic breads and pastries which are all simply delicious! Please don't hesitate to get in touch if you want place a regular order for a loaf or croissant or even for a one off purchase. Their range is more extensive than we could possibly stock here in the shop so pop in and take a look at their catalogue to see what takes your fancy!

The lovely Clare from the Baking Bee continues to bake her magnificent scones for us! They are also now available from the shop or the pub with a portion of jam and Cornish clotted cream, afternoon tea anyone?! She has also made us a batch of cheese scones with gluten free ingredients – hurrah! These are available to buy from the freezer. (At the moment the demand for these is low so to keep them at their freshest we freeze them as soon as they are delivered and



they will be just perfect for you once defrosted).

I wish you all well until next time you pop into the shop! As always, thank you for supporting your village shop and I hope to see you soon.

Lynne

Opening Hours

Monday – Saturday 9am - 6pm
Sunday 9am - 3pm

📷 @bishopstone_stores

📧 @helenbrowningsbishopstonestores

Bishopstone & Hinton Parva WI

theWI
INSPIRING WOMEN



It's been a busy few weeks for your local WI, with a good selection of different activities. Several members enjoyed an afternoon of needle felting which involves rolling up small balls of wool and stabbing them with a needle, to secure them on a block of foam. It sounds odd but it works and produces some beautiful results, some of which will be entered in the WI Annual Show in June.

A few days later a large group went to the training restaurant at North Star college in Swindon where they enjoyed a delicious meal cooked and served by some of the students. The theme of the evening was 'Pub Classics'.

The speaker for the May meeting was Sue Birley, a local author, who talked about her book 'Travels with a Brompton.' Some members may have come to the meeting not knowing what a Brompton was, but Sue arrived with her folding Brompton bike and entertained us with tales of traveling

with the bike and her husband around France. Sue shared some photographs with us, which made many of us think of booking our own holiday in France! She also demonstrated folding and unfolding her bike to show how it could be fitted into a small bag.

Two members, Hazel Cooke and Hasmig Topalian, talked about a County WI event that they had attended, which was a practical session learning about Foraging and what could be safely eaten!! Hazel had also attended a session on Belly Dancing and gave a short demonstration of this, to everyone's amusement!

Judith McGuigan explained that she had used the money she had been given from a WI bursary, to attend a Calligraphy workshop. Judith shared some beautiful examples of her work.

New members are always welcome. If you are interested in joining please contact: janatwan@icloud.com

Future date:

Thursday 13th July. Swindon Old Town Guided History Walk led by Nancy Heath. Starts at **6 p.m** from outside the Goddard Arms. Afterwards back to the Brewers Arms in Wanborough.

Thursday 10th August at Bishopstone village hall. Bishopstone Pottery-the journey with Sue and Adrian Dent. Doors open at **7 p.m. for 7:30 p.m.**



For the love of Gardening!



Words and illustrations
by Jane Pearson

RESILIENT GARDENING

I've recently read the findings of a survey commissioned by the Royal Horticultural Society on how to boost the potential of our gardens to combat the environmental challenges that we are all beginning to face. I know we hear a lot about 'environmental challenges' but we're already beginning to experience some of them with hotter summers and wetter winters and springs. I'm keen to find some practical solutions to help make our lives a little more comfortable and our gardens happier places to be in.

The published research results indicate that the way to make gardens more environmentally resilient is to populate them with plants which are best suited for the location, complement each other (e.g. in terms of nutrient and water use) and increase the number of layers of planting on whatever ground is available. This is joy to my ears as it's something we can all do, and I've been promoting this style of gardening for years!

In a nutshell:

- Grow as many plants as possible. Not just by covering as much of your garden as possible with planting, but also increase the range of plants you grow.
- Plant perennials (including herbaceous, trees, shrubs, and hedges), as these will remain in the ground for many years, providing environmental benefits throughout their long lives.
- Grow as big as you can. Not every garden can accommodate a large tree, but trees, hedges and shrubs will provide the most benefits, purely by virtue of their size. Bigger plants will also often provide multiple benefits at the same time. If you rent, this might not be possible, but if landlords are made aware of the benefits, they may be more receptive. Alternatively, consider re-using containers to make a mobile garden that you can take along to your next home.
- Choose the right plants to help you. For example: If summer heatwaves make you uncomfortable, plant to shade and cool the air, this could include trees and climbers on the walls of your house. For traffic and noise pollution, a hedge in the front garden between you and the road can help.
- Take time to enjoy your garden. It's something that we all learnt in lockdowns, and the rewards of being outside 'in the green' can continue for life. If you can make time – gardening is an excellent way of helping our wellbeing, part of being kind to ourselves because we're worth it!
- Right plant, right place. It's an old garden adage, and one of my favourites. It means growing the plants that will thrive in the natural conditions of your garden. If you have a naturally dry garden in summer, drought-tolerant species are the perfect choice. You will have more success, and the plants won't need so many environmentally costly inputs such as water and fertilisers.
- Don't underestimate the value of collecting rain in water butts, home composting and growing your own food. Sustainable practices such as these all help reduce our negative impact on the environment and make you feel good.
- Improve your gardening skills and knowledge. If you haven't already, consider joining your local gardening club, they're a friendly and supportive bunch! There's also lots of help on the internet and if you would like some One to One tuition and advice, call me on 078111 367320 and book in some Flower Hours: a friendly home visit full of tailored advice, tuition and practical assistance just for you and your garden, I'm here to help!



Salvia nemorosa
'Cardonna' & bee!



Carpet Roses



Honeysuckle



SCAN ME

Please visit my website at
janepearsondesign.com/blog for a list of my favourite evening scented plants, Readers Question Time and much more!
www.janepearsondesign.com/blog

THE POTTING SHED THINGS TO DO IN JUNE

The longest day of the year on the 21st will soon be upon us. the extra light and warmth at this time of the year encourages a great big growth spurt but unfortunately that also means the weeds!

1. Keep on top of those pesky weeds by hoeing regularly in dry conditions but please consider leaving a wild corner of them alone to help encourage and feed our wildlife. Lift, divide and replant overcrowded clumps of daffodils and other spring flowering bulbs.
2. At last, it's time to plant out your summer bedding, now that the late frost risk has gone, your tender plants and herbs can enjoy the great outdoors.
3. Pinch out the side shoots of tomatoes. Every time you water, check the plant for any side shoots sprouting just above each leaf, from the joint between the leaf and the stem and remove the little shoots to promote a better crop.
4. Harvest lettuce, radishes, other salads, and early potatoes.
5. Mow the lawn but please consider leaving some areas uncut for wildlife.
6. Stake tall or floppy plants.
7. Clip evergreen hedges such as privet (Ligustrum), Box (Buxus) and Lonicera nitida if needed.
8. Prune many spring flowering shrubs such as Ribes, Forsythia, Mock Orange, Weigela and Kerria. Shrubs that flower over winter and early spring will benefit from damaged or dead shoots being removed. If there are lots of stems, cut back a third to ground level to keep the plant open and avoid congestion. Lastly, take out any weak or spindly shoots so that the plant can concentrate its energy on the strongest new shoots that will bear the best flowers.
9. Shade green houses to keep them cool and prevent scorch.
10. Fill your border gaps: it's not too late to sow a few fast growing, late flowering hardy annual seeds such as Calendula, Godetia and Clarkia and perennials such as hollyhock, delphiniums, and lupins. Plan for next spring and sow wallflowers, pansies and daisies between May and July.

PLANT SPOTLIGHT

Who knew! Everyone has a birth flower depending on the month they were born. Roses and Honeysuckle are the two flowers most associated with June.

"Would love appoint some flower to reign in matchless beauty on the plain, the rose (mankind will all agree), the rose the queen of flowers should be" Sappho.

Roses There are some 300 species of wild rose and thousands of hybrids in every colour under the sun – except for black. No flower is more embedded in our collective consciousness. It is mentioned in a Sumerian tablet dating from around 2860 BC. In the sixth century BC, Confucius reported that the imperial Chinese library had many books on roses, and the remains of rose wreaths have been found in ancient Egyptian tombs.

You could write a book about the symbolism of the rose. In brief, it's the national flower of England and of the United States, often identified with the Virgin Mary, and a symbol of love in Islam and Sufism. Choose red roses for love, yellow for joy and friendship, white for purity and sympathy or pink for gratitude and admiration.

Honeysuckle Because most honeysuckles are clinging climbers, they have been used to signify love that binds two people together – and because of their nectar, they're emblematic of sweetness. Honeysuckle also represents happiness and positive energy.

There are many species and cultivars but the evening scent of our native English Honeysuckle Lonicera periclymenum is still one of my favourites. It's indicative of lovely warm summer evenings and I like to plant it near the house and outdoor seating areas to enjoy its nearly overpowering fragrance.

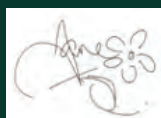
Honeysuckle puts on its scented show at night not just for our enjoyment but to attract pollinating moths such as the hummingbird and elephant hawkmoth. This also accounts for its pale colour, which shows up better in darkness, and its long, trumpet-shaped flowers, formed to perfectly guide the moth's proboscis to its nectar.

07811 367320

janepearsondesign@icloud.com

The Lynchetts, Icknield Way, Bishopstone

www.janepearsondesign.com/hints&tips



Green Fingers



Bishopstone & District Gardening Club



Lizzie from Oak and Furrows RSPCA Animal Rescue Centre was the speaker at our meeting in May. She spoke with abounding enthusiasm and passion about the centre, which is run by just ten paid staff but relies heavily on volunteers to carry out the work. They care for a wide range of wildlife, mammals, reptiles and birds, large and small, furry, feathered or scaly. Many small creatures brought in by the public; larger injured or sick animals (e.g. deer or foxes) which have been reported are rescued by their expert team.

All creatures are welcomed, around 4000 per year are rescued, assessed, treated, rehabilitated before being returned to their natural habitat. Some wildlife need specialist care which the centre cannot provide, so they liaise with vets and other agencies to ensure they the best outcome for all creatures.

Data collected from their work is passed on to research bodies to help in understanding the plight of our wildlife, endangered species in particular, necessary because of our changing environment, loss of habitat, pollution etc.

Funding is from their 10 local charity shops and donations and any contributions are very welcome.

Plant Sale

This year's sale saw a wonderful array of plants of all types, vegetables and herbs, fruit, shrubs, perennials and bedding. As usual it opened at 10am with a rush of customers anxious to claim the plants of their choice. A successful and profitable morning for all.

Rare Plants Fair, Salthrop House, Wroughton.

We had an unusually warm sunny day, which made our garden visit to Salthrop House a real joy!

The beech woods were carpeted with flowering wild garlic; the lilac and fruit trees were in full bloom and there was abundance of jewel coloured tulips – a feast for the eyes! The Rare Plant fair had a huge variety of healthy and unusual plants resulting in full cars and light pockets!

DIARY DATES:

Wednesday 28th June.

Trip to Rooksnest, Lambourn Woodland. A 10 acre traditional English garden includes rose garden, herbaceous garden, pond garden and herb garden. Something for everyone.

Entry £6. Travel by private car.

Wednesday 12th July, 7pm Bishopstone Village Hall

Peter Biggs from Wanborough Herb Nursery, one of our regular speakers, returns to talk to us with ideas to cope with our changing climate and increasingly dry summers.

Contact: Marion Peck, 01793 791 001

MOWERFIXER

maintenance/repair service
mowers, hedgecutters
trimmers etc.
for the Ridgeway villages

New & 2nd hand
garden machinery for sale

0789 979 1833
doug@mowerfixer.co.uk

Jane Pearson Design

Gardens & Landscape
Local Landscape Architect & Garden Designer

Design-Planting-Consultation
Project Monitoring

Creating joyful gardens & landscape infused with your personal style & requirements.

Let's make plans!
+44 7811 367320
www.janepearsondesign.com
email
janepearsondesign@icloud.com

Pre Registered Member of the
SOCIETY OF GARDEN DESIGNERS

Ask
Fanny

Notes and queries from readers, a response from our local agony aunt...

Dear Mrs H

First of all, can't tell you how pleased I was to discover that you're probably related to the original Mrs FH, as noted in the Exmouth register, along with several of my earlier husbands. What fun you can have with several husbands, as you know!

Anyway, what is this enormous turkey-like thing I've seen 'flying' over my now arid vegetable patch, close to the west end of the village? I'm surprised the emergency services haven't been alerted!

Yours in awe

Mrs DH

The West End, close to Hinton Parva

Dear Mrs DH

Also first of all, I'd have been happy with fewer husbands but they all died in mysterious circumstances (see previous village newsletters and my bank account!).

Ref this flying turkey, my various bird spotting friends have also been in contact, and the view is that it's a single male Great Bustard, slightly lost from its normal patch near Salisbury Plain and until recently mooching around in the long grass below the village. In previous years, it's confined its activities to grassland above the Ridgeway.

One of my more lucid correspondents reports seeing 'enormous t...ds' in that area, clearly not from anything with four legs, nor human, and surmises that it must be the Bustard's work. To which end he proposes renaming the Dingle 'Bustard's Bottom', a most sensible idea in my view. Much more memorable.

Yours awe-nithologically

Mrs H

And another missive from Mrs P Off, close to the bottom of Nell Hill I believe

Dear Fanny

I was warmly charmed by the mental image of you struggling through the new gravel (On Ridgeway Circular walk, see last episode - Editor) in your stilettos and short skirt when we corresponded with each other last month.

I would now like to draw your attention to the pesky and expensive nature of the extensive wildlife that this so-called biodiverse farm brings to our village. As others will know, our entire carp pool, containing gilded carp worth £thousands, was emptied in its entirety over the past two years, and we're convinced it was otters. We know that otters have been spotted in the brook well below the village, but I wonder if they are also living close to the water cress beds? And now I hear that the farm is contemplating re-introducing beavers. God save our trees, as well as our ornamental fish.

Yours sincerely

Mrs P Off

Bishopstone

Mrs P!

Welcome back. Yes, the stilettos' charm wore off after a few hundred yards.

Reference the otters, I've always preferred beavers if the truth be told, since it takes me back to my schooldays and all

those terrific jokes that turned out to be true. I notice that the National Trust has named its beavers after the members of the successful English women's football team. How apt.

I'm guessing, knowing the way you live, that you've filled the now fishless pool with champagne?

Thank you again Mrs P

Fanny

Farming, a rural scourge

Dear Mrs F

I have been extremely disappointed to see so many tractors on our roads recently with lots of old grass heaped up in trailers. I was rather hoping that this scourge of rural roads would have been history by now, and that farming - I'm still not sure what they all do in those fields, it's a very old fashioned industry - would be done by robots and drones, and therefore not getting in the way of our 4x4 Mercedes and Volvos and Audis. Is there any way we can stop this rural road menace? Can't they grow all the food we need in the car park at Sainsbury or somewhere sensible, near where we can buy it?

Mrs P (another one).

Dear Mrs P

I'm not quite sure that you've fully understood this. As far as I'm aware, the car park at Sainsbury (other retailers are available) is mostly reserved for late night high speed car trials and the occasional dogging exercises.

I note that you have some walls on your house facing the sun, so perhaps some of the new-fangled vertical farming (grow your own bean sprouts?) could be initiated by you. There is a shop in the village where you can buy food, and that's very near where it's grown, I am told.

Very disappointed, in a different way.

Mrs FH

Mrs F Hole will continue to be delighted to answer any reasonable and unreasonable queries from readers. Email me (Mrs F. Hole) with any queries: BishopstoneEditor@gmail.com

Letter to the Editor

Dear Editor,

It's so good to have the Newsletter back in circulation again. The presentation and content is superb! Many thanks to everyone involved. A very special lady will be looking down and raising a glass to you all.

We miss you Mogs!

Carol and Rick S

Thank you so much for your kind words Carol and Rick. We hope that Mogs would approve and we never forget that what we have achieved today, certainly wouldn't have been possible without her original newsletters to refer to. She's never far from our thoughts.

Cheers Mogs!

DICKIE'S diary



I am returning to nature and "wildlife" ground this month. You may not know that our local Victorian author, Richard Jefferies 1848-1887 from Coate Water, Swindon, is credited with coining the word wildlife.

I saw the first swallows and house martins this year on May 1st but the earliest migrants are mistle thrushes and chiffchaffs. Growing up near Faringdon, we often had a mistle thrush nest in a yew tree in our garden and in the past I have seen sightings near Ashdown Park, but not this year. Chiffchaffs arrived here on March 14th and their repetitive and onomatopoeic call is very frequent near hedges and woodland. I have seen a lone shelduck flying on the downs. These large ducks seem to like Helen Browning's outdoor pigs and they usually nest in a small burrow but one on one occasion nested amongst the tyres on top of our silage clamp near the Ridgeway. Another interesting siting recently was a pair of grey wagtails (with yellow plumage) on the downs when usually they are not far from water, near their usual nesting site. Cuckoos are not extinct! After some years I heard one calling on May 10th high on the downs above the lynchets at Bishopstone and other contacts have also heard cuckoos this year. Also there is a barn owl territorial between Idstone and our Ridgeway buildings. Out with the lawn mower in a walled garden I saw a small bird fly away from a climbing shrub. Investigating I

found a lovely moss-lined chaffinch nest with 4 eggs, creamy /pink with darker curvy markings.

Quite out of place, I was surprised to see a strong patch of ladies smock or cuckoo flower, in flower high up on the dry upper areas of the National Trust valley above Hinton Parva. Usually, they are common in wet meadowland. Primroses are such a joy because they are so natural and are in flower over a long period. Cowslips are another lovely feature and they show well in natural grassland. Highways are to be congratulated for establishing such a good show on the A419 towards Cirencester. Wondering how they acquired their name, Google says that cowslip is a distorted pronunciation of cowslop, because of their associated with cowpats! Orchids start showing in June but already I saw some early purple orchids in flower along with snakes head fritillaries amongst the lovely grounds of Madresfield Court near Malvern on a visit there with the Arts Society. The other good site near here for snakeshead fritillaries is along the meadows at Cricklade.

Another interest is butterflies and orange tips and brimstones are both early fliers and they have been out on nice days. I have also seen one holly blue. They are also early with lovely blue wings. There so many other blue varieties but early on in gardens it is usually a holly blue that you would see.

JUNE PUZZLE: win a £10 voucher

Across

- 1 Do some decorating, having returned book (9)
- 8 Children meditate moodily (5)
- 9 Alfresco exit? (7)
- 10 Wet weather keeps artist at home (4)
- 11 Often rue funny figure (8)
- 13 Desert a painter has seen when retiring (6)
- 14 Knot for elderly relative (6)
- 17 Barrister endlessly confusing judges (8)
- 19 Bird beginning to seem pale (4)
- 21 Scholarly king comes to bad end (7)
- 22 Sound of bird caught by Dickensian villain (5)
- 23 New Year tends to make us inactive (9)

Down

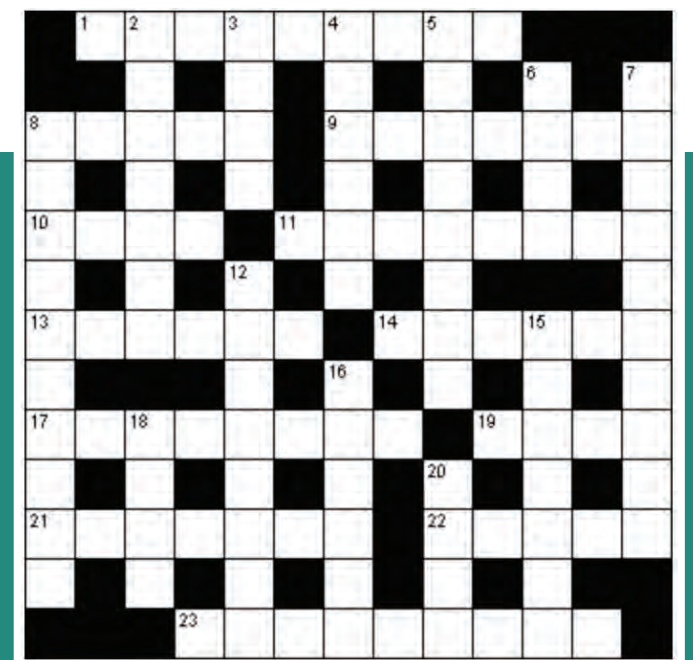
- 2 Scrap iron finally extracted from odd hobnails (7)
- 3 Doesn't go on producing goals (4)
- 4 Express one's displeasure, repeating error (3-3)
- 5 Food-suppliers supplying terraces? (8)
- 6 Opening pronounced intact (4)
- 7 Mark and Pansy turned up for a biscuit (6,4)
- 8 Ban plaster cast in West Country town (10)
- 12 Show a third of retailers in the money (8)
- 15 Were any crackers in time for festivity? (3,4)
- 16 Clear the bed, giving doctor advantage (6)
- 18 A bill for the magistrate (4)
- 20 Glaswegian, for example, in small bed (4)

MAY WINNER!

Congratulations Claire Henderson for your crossword entry. We had a couple of other correct entries but both submitted too late, sorry Pete and Debbie!

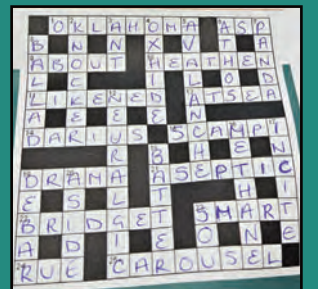
Please visit Lynne at Helen Browning's shop to collect your voucher.

Email: shop@helenbrowningorganic.co.uk









Be in it to win it!

REMINDER: Please submit your completed crossword by the end of each month either by foot or by email to Lynne at Bishopstone Stores, who will drag a winning name from a hat if more than one of you is bright enough to complete it. When you read your name in the next edition to say you've won, you can nip back to the shop to be presented with a nice shiny voucher for £10 off your bill at the pub or in the shop.



May Solution

WALK Of the Month

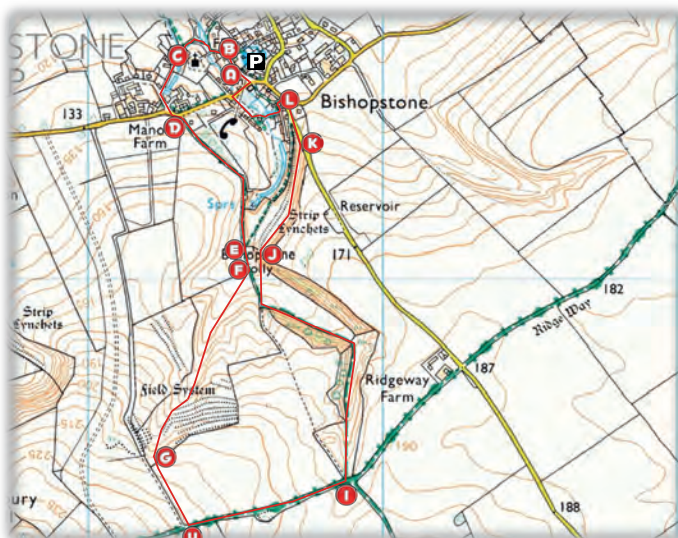
-  Moderate
 3 miles
 1 hour
-  On lead near livestock
 Royal Oak, SN6 8PP
 Bridleway: muddy when wet

- FP** Footpath
PP Permissive Path
BW Bridleway

Walk B3

Bishopstone
Dry Valleys &
The Ridgeway

A beautiful circular walk -
downland village, ancient
dry valleys & The Ridgeway



Visit bishopstoneandhintonparva.org/walks for more info.

© Old Farm House Consultants, 2014

© Crown copyright and database rights 2014 Ordnance Survey 100054436



LEAVE PUB AT FRONT DOOR, DESCEND STEPS

- A Turn left after 30yds on FP at the corner
- B Descend to stream; turn right along The Dingle; turn left at bridge & ascend to Church Lane
- C Ascend Church Lane; turn left at West End terrace to gate to road at the end. Lane T-junction; turn left at top of road (Icknield Way) then turn right at BW
- D Follow bridleway, pass a track joining on left and continue to enter the dry valley (Smiths Bottom) at a gate
- E Follow fence on RHS, turn right at stile into adjoining dry valley (The Lynchetts)
- F Ascend the long steepening dry valley via Pp to cross over a stile at top on the left
- G Follow RHS field boundary to Ridgeway
- H Turn left & follow Ridgeway for ½ mile
- I At foot of hill turn left (BW) at X-roads and descend dry valley, pass through gates at the centre and at valley end
- J Enter field with terraces (Lynchetts) on right. Ascend two tiers of 'Lynchetts' on sheep tracks and follow second grassy terrace to gate to road at the end.
- K Descend road, take FP left at corner after Rose Villa
- L Descend path & branch left behind thatched house, turn left at path junction curving right around the back of the ponds. Turn right at Oxon place, right at main road (Icknield Way) & left back to pub (Cues Lane)

NOTES FOR WALKERS

- 1 Permissive paths may be closed
- 2 Please leave gates as you find them
- 3 Grass field margins are private not footpaths



CREATIVE GRAPHIC DESIGN & ILLUSTRATION
DIGITAL WEB SEO EMAIL FOOTERS
SOCIAL MEDIA ONLINE ADS E-MARKETING
ANIMATION CREATIVE 3D FLIP BOOKS
PRINT LOGOS BRANDING MARKETING
ADVERTISING CREATIVE COPYWRITING
STATIONERY BROCHURES PACKAGING
POS GREETING CARDS BUSINESS CARDS
LEAFLETS FLYERS LARGE FORMAT
BANNERS FLAGS VEHICLE LIVERY
SIGN WRITING PROMOTIONAL ITEMS
MERCHANDISE EXHIBITION STAND DESIGN
AND PRODUCTION AND MUCH MORE

INFO@LULI.UK | 07795 086 197
© LULI.UK | 2023

The Gadgeteer



Summer appears to have arrived. To cool the heat, it's perhaps time to crack out your old ice cube trays. At this point there will be a realisation of how inadequate your PS plastic trays of 14 squares really are. The original ones which came with your fridge freezer. I remember those!! They may have already welded themselves to the freezer drawer or have become inseparable from a pack of Speedy Sausages frozen together since August 2021! I'm therefore picking out a couple of my favourite solutions for

those of us who don't have ice making machines and the last minute trip to Sainsbury finds the premade packs of ice are already sold out. My first go to for cocktails and G+T would be the Ice 'n' Slice from Epicurean. Sold as a twin pack, the trays have a slot for a half slice of lemon or lime for instant cool refreshment. Try HartsofStur.com or StufffortheKitchen.com SRP £6.95-£7.95 set. My next recommendation is for the Icebreaker Pop. A stunning award winning Danish designed product that makes and dispenses 18 perfect ice cubes. Simply fill, freeze.



When ready, flex and then shake out the cubes. There is absolutely no mess with this one as the trays are sealed when filled.

Try www.potterscookshop.co.uk or www.husandhem.co.uk
 SRP £19.95



Joke of the month

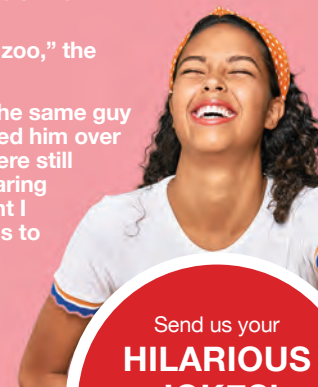
A man was driving down the road when a policeman stopped him. The officer looked in the back of the man's truck and said, "Why are these penguins in your truck?"

The man replied, "These are my penguins. They belong to me."

"You need to take them to the zoo," the policeman said.

The next day, the officer saw the same guy driving down the road. He pulled him over again. He saw the penguins were still in the truck, but they were wearing sunglasses this time. "I thought I told you to take these penguins to the zoo!" the officer said.

"I did," the man replied. "And today I'm taking them to the seaside today."



Send us your
**HILARIOUS
JOKES!**

Good or bad. Email:
BishopstoneEditor@gmail.com

Inside the Peach Pip

The Longest Week, by Nick Page

I know Nick Page from a podcast I am an avid listener to (Mid-Faith Crisis, if anyone's interested), which led me to read one of his most recent books, The Badly Behaved Bible - a book dealing with all those unpalatable parts of the Bible (I'm looking at you, Old Testament genocide) and exploring how it might be possible to reconcile these with a loving God. He looks at the style of writing and who/what it was intended for, using the cultural and historical context of the time, and emphasises the problems that arise from viewing the Bible as one big book dropped down by God from Heaven, rather than a compilation of many different types of text (allegory, poetry, love songs, letters and biographies, to name a few) by many different authors over thousands of years, reflecting people's experiences of God at those times. As someone who has had a lot of questions about the Bible for a long time, I found this fascinating and couldn't put it down. Page's writing style is also accessible and entertaining, so I had a good laugh reading it and was keen to delve into more of his work.

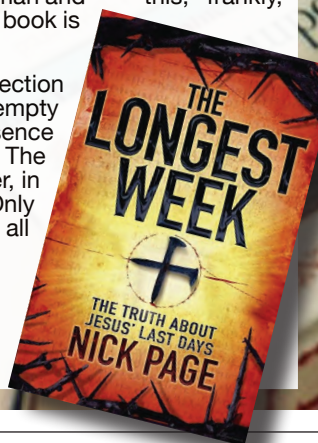
In The Longest Week, Page helpfully pools together all the Gospel accounts, as well as some reliable non-biblical sources, to create a timeline of what the week leading up to Jesus' crucifixion might have looked like. Reading the Gospel accounts individually, none of which provide a full picture and which often give different details about the same event, I have found it difficult (not being a historian of first century Jerusalem) to determine which events are likely to have happened, how and when. Having Nick Page do it for me is therefore ideal. Furthermore, he is able to

explain the significance of events by providing information on, for example, Jewish custom at the time, the status of Aramaic and who spoke it, the treatment of slaves, the political allegiances of the main players in Jesus' trial and execution... I could go on. With all this detail, it becomes clear how lowly Jesus made himself, how politically radical his stand against the Temple would have been, how it was possible for an innocent man to end up receiving a slave's execution, and how symbolic his death and resurrection would have been for the Jewish people. It paints a far more vivid picture of the historical Jesus than I have previously managed to glean from the Gospels.

I read this from a Christian perspective, so of course had an existing interest and belief in the historicity of the Gospels. Regardless of faith, though: for anyone curious about the life of this remarkable man and this, frankly, astounding series of events, this book is well worth a read.

When discussing the resurrection accounts, Page writes of the empty tomb: 'there is a complete absence of any counter-claim. [...] The emptiness of the tomb was never, in fact, a subject of controversy. Only the reason for its emptiness.' It's all so INTERESTING.

Pip pip,
Anna



CHURCH NEWS

A Letter From The Vicar

Dear Friends,

I write this just a couple of days after the Bishop of Bristol, the Rt Revd Vivienne Faull, led the service of Thanksgiving for the completion of the new roof at St Andrew's Wanborough.

All four churches of the Benefice were represented in the congregation and heard the Bishop begin her sermon with an apology for all the Benefice had been through over the past several years. Bishop Viv then looked forward in hope as we have a candidate for the post of Rector.

We pray for all those involved in the interview process and for a successful outcome – that God's hand will be upon the right person to lead us into the future. The candidate will be visiting all the churches and communities on the familiarisation day, 15th June. At 4.30pm – 6.30pm everyone is welcome to meet the candidate at a buffet held in Liddington Village Hall.

The interviews take place on the following day.

The other piece of news is that the key to St Swithun's has been broken in the lock. Unfortunately, this means there is no access to the Church at the moment, but we hope a speedy resolution will be found (especially as my robes are locked in the Vestry!!).

With love and prayers

Sandy

Food for Thought

Mobile fish and chip van

Available for private parties, weddings and all functions.

Find us each month at Charlbury Stables

(See the diary in this publication for actual dates)

Post Code: SN4 0DW

Tel: 07515 288414

Email: grahamrowcliffe58@outlook.com



Church Services in the Benefice
full details on www.achurchnearyou.com

Day	Date	Time	Venue	Service
Sun	18.06.23	10.30	St Mary's	Trinity 2
Sun	25.06.23	10.30	St Andrew's	Trinity 3
Sun	02.07.23	10.30	St Swithun's	Trinity 4
Sun	09.07.23	10.30	All Saints'	Trinity 5
Sun	16.07.23	10.30	St Mary's	Trinity 6

PLEASE CONTINUE TO SUPPORT WANBOROUGH CHURCH.

Make a donation in aid of the New Roof

More information about this is available from the PCC Treasurer:
E-mail: standrewswanborough.treasurer@gmail.com

Donations can be made by cash or cheque which should be made payable to "PCC Wanborough St Andrews No 1"

The PCC Account details for online banking are: Sort Code 30-98-41 and Account No 00316459

Please donate by **Gift Aid** if you can.

Using this tax favourable method, the Roof Project will be able to claim back from HMRC 25p for every £1 donated.



All dates and times are submitted to the Editor.

AFFORDABLE BUS TRAVEL FROM BISHOPSTONE AND HINTON PARVA



Why not catch the bus? Service 47, operated by WBC Connect, runs on Mondays to Saturdays between Lambourn and Swindon, calling at stops in Bishopstone and Hinton Parva on the way.

Journeys leave Bishopstone for Swindon at 8.15am, 10.15am, 12.15am and 5.20pm, and return from Swindon at 8.45am, 10.45am, 1.45pm,

4.20pm and 5.50pm. On Saturdays and during school holidays there is also a journey from Bishopstone to Swindon at 2.45pm.

Bus fares on this service have not risen for five years. In fact, since January they have been reduced. All journeys are now £2 each (or £4 return). For under-19s, they are even lower at £1.50 one-way (£2.50 return) as far as the Hospital, £1.80 one-way (£3.00 return) to Swindon, or £2.00 one-way (£3.30 return) to Ashbury or Lambourn.

And of course, journeys are free after 9.30am Mondays to Fridays (all day Saturdays) with a concessionary travel pass, or just £2.00 on the first journey.



More information about Service 47 and onward buses from Lambourn can be found at www.info.westberks.gov.uk/planyourjourney or telephone 01635 519394.

HELPERS MEETING FOR VILLAGE FETE

4TH JULY 7PM

Littlecot, High St, Bishopstone

Tel/Whatsapp: Chris Thomas: 07789 414147

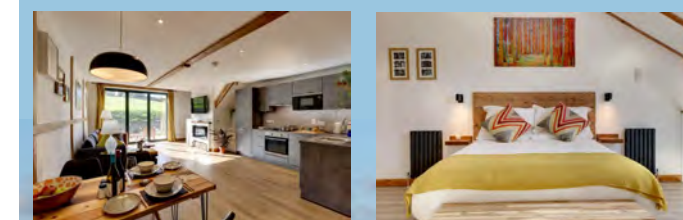
Get involved! Run a stall, or find out how else you can help at this lovely social event.

Please send me a message if you can come to the meeting or if you are able to help.

There will be wine!!



theowlbarnwiltshire.co.uk



Wanborough Bowls Club

Hooper's Field, Rotten Row, SN4 0AN

Why give bowls a go?

- It's a fun sport and good for your health
- You don't need any experience
- It's an opportunity to get outside in the fresh air in beautiful surroundings
- We are a friendly, social club
- There are lots of opportunities to play, friendlies and more competitive matches, both within the club and against other clubs.

You are welcome to come to visit, borrow our equipment and have a go with no commitment to join. Email or call the Hon. Secretary to arrange:

info@wanboroughbowlsclub.org.uk or 01793 614861

If you do decide to join us, adult membership is just £40 for the first year.

The green will open on Saturday 8th April (weather permitting) and then every day until the end of September. There's lots of parking on site.

wanboroughbowlsclub.org.uk



The Parish Times

Bishopstone Parish Council, serving Bishopstone, Hinton Parva & Russley Park

June 2023



Pupils with their headmaster Robin Smith, Cllrs McGrath and Brodin, and PCSOs Trueman and Watson

KING'S OAK MARKS THE CORONATION

Children from Bishopstone school joined parish councillors in a ceremony to name the newly planted oak sapling at the corner of West End Lane.

In honour of the coronation, the tree was named The King's Oak, and we hope it will grow strong and healthy for future generations to enjoy.

A group of older children read a very appropriate poem for the occasion, The Oak Tree. Two of the school's youngest members helped Parish Council Chair Val Brodin to cut a red ribbon (pictured, right), and all the children were presented with coronation stickers, bookmarks and a certificate in recognition of their participation in the event.

The Parish Council is grateful to our rural PCSOs, Justine Trueman and Charlotte Watson, for their help with signage and safety for the occasion.



*Excerpt from:
The Oak-Tree
by Mary Howitt*

*Sing for the Oak-Tree,
The monarch of the
wood;
Sing for the Oak-Tree,
That groweth green and
good;
That groweth broad and
branching
Within the forest shade;
That groweth now, and
yet shall grow
When we are lowly laid!*

THE PARISH TIMES FOR BISHOPSTONE, HINTON PARVA AND RUSSLEY PARK

FINANCIAL RECORDS PREPARED

The Parish Council's Annual Governance and Accountability Return (AGAR) has been prepared and is available to view on the website at bishopstoneandhintonparva.org/

Thanks are given to Bishopstone resident Paul Bailey who undertook an internal audit of the Parish Council's finances for 2022-23.

The period for the exercise of public rights runs from June 6th to July 17th and any resident who would like to examine the AGAR during that time should contact the responsible financial officer/ clerk Jaine Blackman at clerk@bishopstoneandhintonparva.org or telephone 07913 819422.

BISHOPSTONE PARISH COUNCIL

Ms Jaine Blackman (Clerk)

Phone: 07913 819422

Email: Clerk@bishopstoneandhintonparva.org

Mrs Val Brodin (Chair)

Cllr.valbrodin@gmail.com

Mr Ian Thomas (Vice Chair)

Cllr.ianthomas@gmail.com

Mr Julian Cooke

Cllr.juliancooke@gmail.com

Mr Nigel Crisp

Cllr.crisp@gmail.com

Mr Doug Stevens

Cllr.dougstevens@gmail.com

Mr Tom Green

Cllr.tomgreen@gmail.com

Mrs Gill May

Cllr.GillMay@gmail.com

Mrs Lucille McGrath

Cllr.lucillemcgrath@gmail.com

Mr Steve Bell

Cllr.sbell@gmail.com

The Parish Council's policies and documents can be viewed at bishopstoneandhintonparva.org/

PARISH COUNCIL MEETINGS 2023/24

3rd July Hinton Parva

7th August Bishopstone

4th September Hinton Parva

2nd October Bishopstone

6th November Hinton Parva

4th December Bishopstone

2024

8th January Hinton Parva

5th February Bishopstone

4th March Hinton Parva

1st April Bishopstone

Meetings begin at 7.30pm. Late changes are shown at bishopstoneandhintonparva.org/parish-council/ and on the notice boards. Members of the press and public are welcome to attend.

Useful Information

Swindon Borough Council: Reception Premier House 01793 465055/465056; **Civic Offices** 01793 463668; **Wat Tyler House** 01793 463725

For problems with waste collections call Streetsmart on: Monday to Friday 8am-8pm 01793 445501; all other times 01793 466453

Report fly-tipping or pot-holes to SBC: swindon.gov.uk/my-account
Wiltshire Police non-emergency number (less urgent than 999): 101
Borough Councillor Gary Sumner - GSumner2@swindon.gov.uk

PARISH COUNCILLORS' KEY RESPONSIBILITIES

Finance Nigel Crisp/Lucille McGrath

Footpaths and Highways Julian Cooke (Hinton Parva) Ian Thomas (Bishopstone)

Pond & Island Doug Stevens

Hinton Parva Village Hall Val Brodin

Bishopstone Village Hall Steve Bell

Hinton Parva Charities Peter Cooke (PC nominee)

Bishopstone United Charities Doug Stevens, Christine Thomas (PC nominee), Laurie Manktelow (PC nominee)

Trees Julian Cooke (Hinton Parva) Ian Thomas (Bishopstone)

Russley Park Liaison Nigel Crisp

Responsible Financial Officer Jaine Blackman (Clerk)

Planning Ian Thomas/Tom Green

Website/IT Nigel Crisp

Policies Gill May

School liaison Lucille McGrath

CURRENT PLANNING APPLICATIONS

All planning applications, their history and all supporting documents can be viewed at: www.swindon.gov.uk/planning
Planning issues are discussed at the monthly Parish Council meetings. Public representations are heard prior to the start of the meeting.

S/HOU/23/0498 Erection of a two storey rear extension, erection of a bay window, replacement windows, removal of chimney stack, heat pump installation and associated landscape works at: Hill Manor House, Hatchet Hill, Hinton Parva. **Comments by 15/6**

PENDING DETERMINATION

S/23/0190 Change of use from agricultural to residential land and erection of 1 no. dwelling (class C3) with detached garage at land adjacent to Westhill House, Hinton Parva.

S/AMEND/22/1808/RACH Non-material amendment to previous permission S/20/0415 – Changes to face masonry brick type.

S/LBC/23/0392 Erection of a detached outbuilding/ home office. At: Hergest Ridge, Cues Lane, Bishopstone.

S/AMEND/23/0421/JP Netherwater, City Corner, Hinton Parva, Non-Material Amendment to previously approved Planning Permission S/22/0401 - relating to the orientation of the roof gables.

GRANTED

S/HOU/22/0892 Erection of two-storey side and front extension at 2 Grove Cottages, Hinton Parva Lane Hinton Parva.

FOLLOW ALL OUR LATEST NEWS ON FACEBOOK @bishopstoneandhintonparvaparcouncil

VIEW THE PARISH WEBSITE AT WWW.BISHOPSTONEANDHINTONPARVA.ORG

VILLAGE hall news



BISHOPSTONE

Notice of AGM

Please be advised registered Charity 271165
AGM at Bishopstone Village Hall, Icknield Way, Bishopstone
26th June 2023 at 1830 Hrs



OPERATION GUTTER BUSTER - MISSION ACCOMPLISHED

Over recent weeks the Village Hall has seen near catastrophic flooding (in Bishy exaggerated terms anyway) due to rainwater run-off. We had months of clearing silt from our onsite French Drains and brushing away surface water and flotsam from the porch area. A Barnes Wallace work party identified the drains along Hocker Bench as being partially blocked. This caused rainwater flowing down from Nell Hill to carry perfectly round to the porch at the village hall.

Our parish council representative Flt. Sgt. Steve Bell diligently followed up with SBC Highways and we are pleased to report Operation Gutter Buster was a complete success following a fly by and lack of rain, the gullies on the main road appear to now be clear and running freely once again. Roger. Over and Out.

Wing Co. Walker BVH and bar.

HINTON PARVA

HINTON PARVA BRIDGE CLUB

New members always welcome
Hinton Parva Village Hall
FRIDAY 7PM

For more information, contact
Dale and Jim Mitchell
Email: hintonbridge@hotmail.co.uk
Tel: 01793 627301

VILLAGE HALL HIRE
Both Bishopstone & Hinton Parva Village Halls have availability if you would like to hire either of them.

BISHOPSTONE INFO/BOOKINGS:
Anna Bareham: annajanebareham@gmail.com
Hourly rate: £11 residents, £15 non-residents

HINTON PARVA INFO/BOOKINGS:
Janet Hawkins: 01793 791391
Email: jaymaybee02@icloud.com
Hourly rate: £8 residents, £10 non-residents

BISHOPSTONE ALLOTMENTS AVAILABLE

On behalf of the Church Commissioners and their land agent Strutt & Parker, several half allotment plots are now available to rent by the local community. A perfect opportunity to grow your own fruit and vegetables.

The price is £8 per half plot per year (April to March)

No permanent structures such as sheds are allowed but low level storage is permitted.

Although livestock cannot be kept, bee keeping is encouraged by the owners.

If you are interested in taking an allotment in Bishopstone, contact Steve Bell on 07598 185643



We've heard through the grapevine there is an appetite for a regular village Fitness Class or Pilates/Yoga class to be run in Bishopstone. Should anyone be interested in setting up or running an event please contact: annajanebareham@gmail.com for availability of the Village hall.

BISHOPSTONE PIGS OUT ON CAKES



Thank you to all those that made it to the pig racing fundraiser this weekend in Bishopstone - we raised some fantastic funds for **Swindon and North Wilts Deaf Children's Society** and **Prospect Hospice** - the biggest thank you goes to our fabulous volunteers who worked tirelessly in the sunshine and amazing cake bakers who donated their time and wonderful bakes and Richard Walker for piggy cooking donations.

Well done everyone and thank you once again Helen Browning's Royal Oak and Tim Finney for holding such a great event. For me, this is my last as chairperson for the DCS, so happy to go out with a bang!

Mille Green



More information about how you can donate can be found at www.swindonandnorthwiltsdcs.org



BISHOPSTONE'S BIG LUNCH

Bishopstone's Big Lunch was attended by 30 enthusiastic villagers, both old & new, young & old. All tucked into a fabulous spread of delicious food created by the village catering genius, Karen Stevens! Karen created a myriad of dishes to compliment a tremendous Coronation Quiche whose recipe was devised by the King himself. A mouthwatering array of puddings were brought in by many and enjoyed by all. To top the food, a sumptuous ale was kindly donated from Arkells via evidently the best landlord in the village - thanks Tim!

Thanks to all PCC volunteers who helped set up the event, washed up and tidied away; thanks to all who turned out and special thanks to Karen for spending hours cooking and preparing the wonderful feast.

Doug Stevens
Churchwarden



LOVE YOUR GARDEN

Facelifts by

ON POINT
PAVING
Groundworks and Hard Landscaping

For a friendly professional estimate
07748 799995
onpointpaving@yahoo.com
www.onpoint-paving.co.uk



Pond Life

Anas platyrhynchos



It's June already and the weather is finally getting warmer. Of the ducklings recently hatched, we have five who seem to be good and strong and so far surviving well. Their names are Julian, George, Ann, Dick and Timmy of course. We are all on 'fattening up duty' to keep them strong and more resilient from harm and although it's currently a little difficult to differentiate, hopefully some of these are females as it seems that the gender ratio is pretty unbalanced this year. Poor outnumbered girls.

Did you know that one way to tell the males from the female ducklings is by the horizontal black stripe which runs through their eye line. In males, this tends to be darker and more prominent. Another subtle difference is the females' down tends to be a bit softer and may appear brighter in colour just before their adult feathers come in. Based on this, we think that there may be three females and two males in this brood.

Our pond is thriving and providing humans give them some space rather than trying to join them, we hope that it will continue late into the year.

P D Q U A C K I N G P V D U F C L M O M
A F T Q H R H L Y E P J O J P Y H C E K
D D C L M Z N T P A Z D W R V Z P O N R
D A G P A L M A T E T E N P P T M O J Q
L M O U L T N C Q I V S B K Z C L T U R
E D T X W A T E R F O W L P U K V D G W
E K H E E P A C I I L Y Z E D L P G R W
Z W X K H M R G L S H V F G E B D U L N
L Q Z M X V E B Y C J F N J F V R O X F
U E M M A B G P D F G G A J R B Q O W F
K L Q W J L C I J U E B M X A D E Z O K
C C R A J P L M V I C A X A H Q H T V D
U B C H M M Z A R W Z K T I J N T V F K
S D E K D Q B O R H Z G L H J S L V I K
B U F T R D X P K D D F U I E K D H T K
B C J Y A I I L E E F W G D N R M Z S Q
I K B M K V K N G K B U W L Z G B B C H
L Y I L E E L W G F Y S B J R G E E D N
L T R X P S G P S S W I M S L X A O E J
W H D F A M I L Y N K K I G W A K F X Q

June Word Search

B T S B P W K P S C G N M G O B C T J O Y P T A I
A W A D B O C R O G S B E F E S V G M J B M S J W
M E D B H R N M U D F Z A U P W E C W H Z F J G
P A G L I O S D Y N W A T E R B O A T M E R T I
H T H A W N R Z S S A Q U A T I O H T K N A O J
I K O C I S O Z E K I O Z Y L J C K O G R I U H
B C C K E E O L G O A O O O A B Y H Z A U A N D D
I V C B E C C S W X D T N O R P E X X V G M T F
A G D I K T K R C V P Y E S A U P C G S P A F Z
N N R R L S U U A G H W N R S B G V H O X L T D C
S L U D T P R L H E O N E P S O O H X N P E R A
P M H S H K S T L N T U P G K P T C N L R O R U P
P C Z Z V K Y R I A O A C D Q S X Z W F J M Z V
N L O N V G L Y E T S O R Z S T X K U I A Z I H
E K A N U G Z L C E V B P L O O R L O A M I A N
D P Y N T F Y X M D N G J Z L K K E O S E I E N S
Y O W A A W G V I T E C O S Y S T E M G R R A H
E N V J O N G B C H A O G E C T K T S E T G O S
S D Y B Y N N V S E U A K R U J I I O T V W C U
N L N L T E Y G E Y L V Y Z A E B D L A P C L L
Y I O D W O D E T B I F T G H Y P Y E T E R V O
C N J Z C J I S N V S P D C Q H D E W C I S M Z G
K E T J Y Z E V G X E P D N L T X P L K O A D Y E
J R Y D O K U Y V W N C X G X Y L I G N K F C G
D K H S H M Z B G A S H V K W Z Y U F I X J E I J

This month's word search contains 20 words which are all duck related. Enjoy!

May Solution

Bryn Llinos

A holiday cottage close to Beddgelert in the heart of Snowdonia

4* Rated with 5* Reviews

Excellent for beaches, mountains, walking, cycling and mountain biking

Heritage steam railway just 50 metres away at Nantmor Halt (Porthmadog to Caernarfon)

Discounts available for local residents to Bishopstone, please contact: brynllynos@yahoo.com

www.holidaycottages.co.uk/cottage/64657-bryn-llinos



GRANT FRASER TOWN & COUNTRY



We are a family owned, fully independent company who take pride in getting customers moved onto their next milestone in a simple and stress free way.

If you are thinking about selling your property, to arrange a **free** no obligation valuation today, contact:

01793 228 440
07737 745 231
grant@grantfrasertc.co.uk

Well Hung Framing by Kate Herbert

I am Kate, your local bespoke picture framer.

I have a passion for framing and enjoy working collaboratively with my clients in selecting the best mounts and frames for all projects and budgets - from box framing, medals and memorabilia to paintings, prints and certificates. I also offer frame repairs and reglazing.

Please call, text or email to arrange a visit to my studio in Watchfield to discuss your requirements.

07710 348 263 bykateherbert@gmail.com

Check out my website for further information

wellhungframing.co

Rachel Payne Professional Hairdresser



- Established 25 years
- Based in Bishopstone
- Olaplex, Moroccan Oil & Schwarzkopf Treatments Available

For Appointments & Consultations
Contact 07527 607947

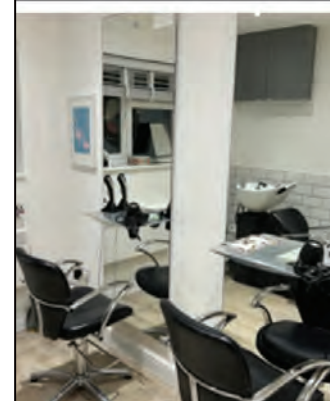


Photo of the month

CONGRATULATIONS Justin Moss! The only Hoopoe spotted this year just off the road by Foxhill. Photograph by the country's leading divorce lawyer in a quiet morning for divorces. Photographed at the end of May.

Achieve local fame with your photographic skills. The lucky winner will be chosen by the team each month. They will have their photo printed in full colour, right here, for the whole community to see.



Hoo else spotted me?

SEND US
YOUR SNAPS

Email:
BishopstoneEditor@gmail.com



Osama Pig Lardons Wins Blue Riband Hurdle



Find us online



The clear favourite, from the Marlborough based syndicate BUKKA, romped home in the 3.45 at Bishopstone on Sunday and the winning trainers celebrated with some exceedingly large cocktails after pocketing nearly £100 from the Piggy Power bookmakers. The orange and red striped filly was a doubtful starter in the few days beforehand, and no-one really wanted to go near her unless brandishing a wet wipe.

A record crowd of 700 lined the Cues Lane Stadium, around Bishopstone's worst pub, with very few people from the Health and Safety executive in attendance on this occasion. Thank the lord.

Two charities benefitted most: Prospect Hospice will get a bank transfer from me of £450 (assuming I don't spend it all this week) - that's what we 'sold' the 10 pigs for, for a day - and Wiltshire and N Swindon Deaf Children get the surplus from the tote, about £750 this year. Thank you, all you generous gamblers. And thank you pig owners, only one of whom converted to veganism when they heard what was in store for their delightful Piggy Smallz or Serrano de Bergerac in the not too distant future. I have to say that Libby Bradley, Smallz's owner from High St Bishopstone, seemed to think the whole event was rigged against her pig! Extraordinary that we would ever think of manipulating the outcome of events!

At a personal level, and very unusually, I would like to say thank you to our neighbours, the Hales, for allowing the pub landlord the space and the little tower in their garden to vent his utterly hopeless commentary (I think he was jus' makin' it up, as Just William would say); and of course to the Greens for their superb Piggy Power bookmaking software, and all the people to operate it. And to most of the other neighbours who allow us to run this nonsense every year; and to our staff, and regular talented volunteers and friends, who ensure that most jobs are very well done most of the time.

Also unusually, it's time for an apology to the residents of Ashbury whom I have enjoyed baiting in this column for the past few years (because everyone needs a pretend axe to grind). I have suddenly realised that there are some very nice people indeed there, including Karen Crouch whom I always had tagged as someone from Wanborough, and who in a short conversation earlier this month has convinced me of the error of my ways. I will not be making that mistake again, clearly. The landlord will need to find another village or hamlet to irritate, and I am happy to take your suggestions.

While on the subject of Wanborough, I am wondering if it's time actually to start a rescue mission for that benighted village. For some reason, our glorious borough councillors seem to think it fair to deprive the Wanboroughites of any means of escape from their digger-strewn village, for much of the past two years. Apart from the clearly shrinking gene pool available to the more active end of their population, if I was a business owner in the village I'd probably have given up by now. And sued someone. No wonder some of the pubs there keep opening and closing (and some for good, I hear).

The wondrous **Honeymoon Swing band will be in the garden on June 24** (outstanding fun). Here's hoping for some good weather.

Our National Agroforestry Show and Exhibition, September 6 and 7 at Lower Farm (on the Bourton/Hinton road) is progressing well, and **Groove Armada/Andy Cato are now confirmed for the Wednesday, Sept 6**, plus support acts—not sure who. A day ticket to the Wednesday of the event includes a ticket to Groove Armada; otherwise wait for tickets to be available generally, probably mid-May, just 250 of them. I'm having to resist some bribes being offered. They'll have to be a lot better than that! www.agroforestryshow.com

TF



@helenbrowningsorganic

HELEN BROWNINGS



Enviro
PEST CONTROL

We are a local business providing a professional and friendly service to commercial and domestic customers in Bishopstone and all surrounding villages.



Fully qualified - Insured - 30 years experience

10% discount off standard rates with this ad

Mobile - 07379 276187

Email - enquiries@enviropestcontroltd.co.uk

www.enviropestcontroltd.co.uk

BARNES COACHES

01793 821303 | BARNESCOACHES.CO.UK

NEW 2023 Holiday Brochure OUT NOW!

Includes exciting new UK & European tours for 2023! Request your free brochure today.

BARNES

2023 UK & European

Coach Holidays



FREE* HOME PICKUP & DROP OFF SERVICE AVAILABLE ON HOLIDAYS 4 DAYS & OVER!
*See our website for our free pickup area.

01793 821303
barnescoaches.co.uk

Est.1986

Chappells
ESTATE AGENTS



rightmove



Sales • Lettings • New Homes

Specialists in village property for over 35 years.

Contact us now for your free valuation



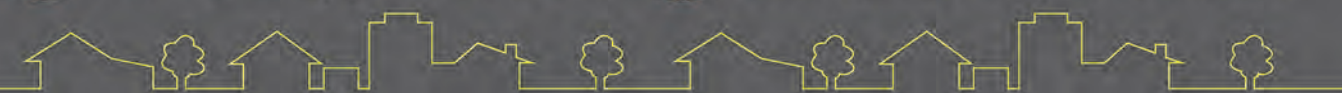
01793 618080



sales@chappells.uk.com



lettings@chappells.uk.com



RECOLLECTIONS OF BISHOPSTONE LIFE IN THE 1800'S

PART TWO



BISHOPSTONE FROM THE DOWNS
bishopstoneandhintonparva.org

The Roadmen

'Until about 1890 the roads were made & kept in repair with flint stones dug up on the Russley Downs.

The Roadman who kept 2 horses & Carts & employed 3 or more men, lived in a thatched cottage at the foot of the banks (so called to distinguished them from the downs) Some years ago this cottage and the Stables were pulled down & the Coombs built on the spot.

Two of the men used to walk up to the downs, about 2 miles, to dig up the flints; the Roadman & his other employee would edge & scrape & generally keep the roads tidy, quite a big job, particularly near the farm yards & gates.

As a length of road needed repair the horses & Carts were used to bring the flints from the downs & tip them in big heaps on the grass verge, where they we left until enough had been brought to do the job, then more men with a roller

was employed to lay and roll them in.

After about 1890 Bristol Rock was brought in trucks by rail to Shrivenham Station. This was carted & tipped into heaps on the grass verge, & as it was in very large lumps, the roadmen, instead of digging flints were fully occupied in stone breaking.

After some years the Bristol Rock was brought all ready to put on the roads, & the processes have improved, until now 1955, the materials are brought by lorry & a tar distributor finishes a length of road in a very short time.

We are grateful to Sue Waldek who found these notes in some of her late aunt's effects. (Sue is a Bishopstone girl, formerly of the High St). Sue's aunty was known for her talks at the Village School, this from 1955.

In addition to her talks, encouragement was given to the children to collect their own 'memories'.

Collect your pictures, your photographs, your stories from the old people, go & talk to the butcher, the baker, the Candlestick maker!

Some like to hunt up old records, documents, recipe books, household account books, wills etc.

How much was paid for tails, for paddling docks etc.

The first Bus, the footpaths, old kissing gates.

About reaping, threshing, gleaning. Did women work in the fields all the time, what wages.

The basket maker, the beehive maker.



A healthy and productive garden starts with healthy soil.

Use Soil Improving Mulch from Apsley Farms this Spring!



- 100% sustainable
- A by-product of green energy
- Free from peat, weeds, pests & waste
- Suppresses weeds
- Rich in N, P and K nutrients
- Repels slugs and snails
- Locks in moisture
- Available in 730 litre bulk bags



£90 SPECIAL OFFER!
730L mulch bulk bag plus 10L Plant Food with FREE delivery*
Our Natural Plant Food is organically certified. Available in recycled 5L containers.
*central UK postcodes.

sales@apsleyfarms.com

01264 554433



Pearce Funeral Services



- PROFESSIONALLY QUALIFIED
- CHAPEL OF REST
- HOME VISITS AVAILABLE
- ONLINE FUNERALS AVAILABLE
- RECOMMENDED IN THE GOOD FUNERAL GUIDE
- COMMITTED TO THE FAIR FUNERAL PLEDGE 2021

2021 FAIR FUNERALS

By signing the pledge, we have made a commitment to be open with our families about the costs involved in funerals and to ensure that we always offer the most affordable options to help them to plan a funeral that is within their means.



92 Ermin Street, Stratton St Margaret, Swindon, SN3 4NN | 01793 832 072

1 Groundwell Rd, Swindon SN1 2LT | 01793 422422

www.pearcefuneralservices.co.uk | Info@pearcefuneralservices.co.uk



EDWARD BAYS Ltd PLUMBING & HEATING

01793 763790
www.edwardbaysltd.co.uk

CLASSIFIEDS



B and H 400 silver plated trumpet. Would suit beginner or intermediate players but holds its own at a higher level. A well-respected brand (Boosey and Hawkes) and faultless! Few age-related dinks and mouthpiece holder arm loose – easy fix. Includes: Hard case Serial number: 759582

£120 Bishopstone, 07795 086 197

Planning a party? Need glassware? Large selection of professional quality glassware for sale, including 4 dozen champagne/prosecco flutes, about 100 shot/shooter glasses, a couple of boxes of coupe glasses and a dozen lovely big bistro wine glasses. Sensible offers accepted.
View in Hinton Parva. 01793 791949

Buffalo commercial soup kettle (also great for hot punch!) 10 litre capacity. Lightly used in great condition.

£40 Hinton Parva. 01793 791949

Dog collar for sale/free to good home; might suit a vicar although possibly a bit scratched round the edges. More suitable for a dog probably. Also other dog paraphernalia, eg muzzle (not for a vicar), and some high quality food items. George doesn't need them any more. old out in store. Black border, 55cm diameter, almost new. Four available.

Bishopstone. 07976 321797

Farm House to let; beautiful Wiltshire Downland village, 6 bedrooms, two bathrooms, three huge communal rooms, one acre of garden, outbuildings, trout pond (slightly overgrown, not many trout), easy access to church and pub; very private and very exclusive. Please apply in writing to The Church Commissioners, c/o London head office. Don't expect a reply. They prefer their buildings empty!

Classifieds: £5 per entry for 50 words or £10 with a photo. Drop your adverts in to Lynne at Bishopstone Stores, with payment. Email photos to: BishopstoneEditor@gmail.com

SWINDON SKI & SNOWBOARD SERVICING

WWW.SWINDONSKI.CO.UK
enquiries@swindonski.co.uk

Ian Thomas 07778 807783

HERITAGE TREE CARE

Professional Tree Surgeons

**Comprehensive Service
Qualified Staff
Fully Insured**

- ✓ Pruning and Shaping
- ✓ Felling and Removal
- ✓ Hedge Cutting
- ✓ Stump Grinding
- ✓ Tree Planting

Free quotations and advice
Call Ian Walding (N.C.Hort / N.D. Arb)

01793 790210

Email: ian@heritage-treecare.co.uk
www.heritage-treecare.co.uk

Watchfield Opticians

Opening hours:
9am – 5:30pm Monday to Friday
9am – 1pm on Saturday

Your local Opticians situated next to the Co-op in Watchfield.
With parking available right outside and easy access.
Full Eye Examination.
OCT and OPTOMap scanning.
NHS funded eye tests available for those eligible.
Children's Eye Test.
Contact Lenses.
Hearing Tests and Ear Syringing.
Great choice of glasses and sunglasses to suit all tastes and pockets.



2 Majors Road, Watchfield, SN6 8TQ
T: 01793 783848 E: info@watchfieldopticians.com
www.watchfieldopticians.com



WEBBS

Builders Merchants

Established for 4 generations

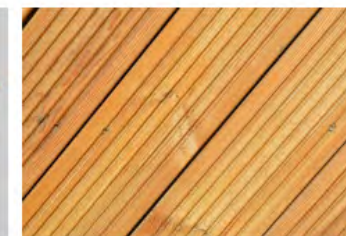
Well stocked, high quality products at competitive prices



Fencing



Garden Paint



Decking



Building Materials



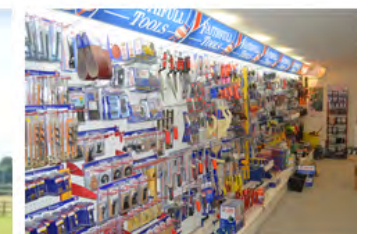
Treated Timber



Custom Gates



Railway Sleepers



Hardware Shop

Friendly staff - always eager to help

Local delivery available



Open Monday to Friday 7:30am to 5pm, Saturday 8 am to 12 noon
Please note we are not open on bank holidays

WEBBS, Southdown Farm, Faringdon Road, Longcot, Oxfordshire, SN7 7UA
(please do not follow sat nav)

01793 783 879
sales@webbswood.co.uk
webbswood.co.uk



**FIND US
ONLINE**

www.bishopstoneandhintonparva.org

f /groups/bishopstoneandhintonparva

General Information

Send us your
DIARY DATES
Email:
BishopstoneEditor@gmail.com

Contributions

If you'd like to write an article or submit any photography please email Andrea for consideration in the next issue.

We aim to distribute the newsletter on or around 15th of each month.

DEADLINE for any considerations will be the last day of the previous month but we welcome submissions sooner.

If you would like an advert designing for placement in the village news, please contact Andrea who is offering a discounted rate for Village News adverts.

We are a non-profit organisation

The Village News is created and run by a small group of volunteers and is a non-profit organisation affiliated to Bishopstone Village Hall. Reg Charity no 271165.

If you would like to make a donation to help with the upkeep please contact Treasurer Andy P, or there are additional copies available and a donation box on the counter in Bishopstone Stores.

Team

ADVERTISING:

Graham Curley
graham.curley42@gmail.com

Russell Hatch
russell_hatch@ebamooba.co.uk

PUBLISHING EDITOR:

Andrea Wadsworth
andrea@luli.uk

SUB-EDITOR:

Val Brodin
valbrodin@gmail.com

CREATIVE COPY:

Tim Finney
Richard Walker
richardw@eddingtons.co.uk

TREASURER

Andy P
andrewpocock@yahoo.co.uk

DISTRIBUTION:

Christine Thomas
littlecot2010@hotmail.co.uk

Doreen Cooper
01793 792 965

Diary May/June 2023

2023	Time	Event	Place	Contact
17.06.23	12pm - 5pm	Peach Pip Book Shop	Bishopstone Village Hall	annajanebareham@gmail.com
17.06.23	The King's Birthday			
18.06.23	Father's Day			
18.06.23	12pm - 3pm	Peach Pip Book Shop	Bishopstone Village Hall	annajanebareham@gmail.com
24.06.23	9.30am - Midday	Repair Café - The Hub	56 High St. Shrivenham	sustainablesshrivenham@gmail.com
24.06.23		Honeymoon Swing band (see pg. 18)	Royal Oak	01793 790 481
26.06.23	6.30pm	AGM: Bishopstone Village Hall	Bishopstone Village Hall	
28.06.23		B&D Gardening Club Trip to Rooksnest (pg. 5)	Lamborne Woodland	Marion Peck: 01793 791 001
01.07.23	11am - 3pm	Ridgeway School Summer Fete (see pg. 6)	Wroughton SN4 9DJ	force@ridgeway.school.com
01.07.23 NEW DATE		Rescheduled: Wanborough Horse and Dog Show		info@wanboroughshow.org
04.07.23	7pm	Helpers Meeting for Village Fete (see pg. 11)	Littlecot, High Street	Chris Thomas 07789 414147
12.07.23		B&D Gardening Club P. Biggs Herb Nursey Talk	Bishopstone Village Hall	Marion Peck: 01793 791 001
13.07.23	6pm	WI: Swindon Old Town History Walk (see pg. 3)	Goddard Arms	
22.07.23		Repair Café - The Hub	56 High St. Shrivenham	sustainablesshrivenham@gmail.com
06.09.23		Groove Armada/Andy Cato DJ set. (see pg. 18)	Info through Royal Oak	01793 790 481 tickets
06/07.09.23		National Agroforestry Show and Exhibition (see pg. 18)	Eastbrook Farm	01793 790 481
1st Tues of month	6-7pm	Sounds Like Women Radio Show	Swindon 105.5 fm	Hosts: Mandy, Tracy & Luiza
2nd Thurs of month	7pm Start 7.30pm	Bishopstone and Hinton Parva WI	Bishopstone / Hinton Parva Village Hall	Jan Chapple janatwan@icloud.com

Church Services, please see **page 10**
Parish Council Meetings, please see **page 13**

The views of individual writers expressed in this magazine do not necessarily reflect those of the editors, the parish council or the church. If you have any feedback or questions, please contact one of the editorial team listed to the left. Apologies for any stray typos. We do try hard to catch them all but occasionally some escape.

You may also deliver items by hand to Bishopstone Stores and Lynne will kindly pass anything on to us. Please make sure that you include any names and contact details so that we may get in touch with you. None of these personal details will be published unless we are specifically asked to do so.

Tell us your thoughts!
'LETTERS TO THE EDITOR'
Email:
BishopstoneEditor@gmail.com

Dates are correct to the best of our knowledge at time of going to print. Please see Facebook for any interim updates.