



VILLAGENEWS

Dec 2023



'Artist at work' our own Andy P. working hard to make the tree fit.

MERRY CHRISTMAS

HAPPY 1st BIRTHDAY TO US!

This year has flown by! We are celebrating one whole year since relaunching the Village News. It's worth noting that this has all been made possible entirely by our volunteer group from the local villages – WELL DONE!!

It would be remiss of me not to mention a particular thanks to Andrea who keeps her cool, remains calm and collected whilst juggling her creative design agency clients alongside any demanding divas from the village! She manages to pull together everything for print deadlines all in her own time. Thanks too to Graham Curley who has truly owned the recruitment of advertisers. A terrific job with over 35 separate contributors signed up over the year to bring in essential advertising revenue.

A BIG thank you to Andy Pocock for keeping us straight and to the penny on the finances. As a charity, we are grateful that Andy, who is a Chartered Accountant, maintains clear and transparent records for all our fund-raising activities.

We must also thank generous donations from private individuals (you know who you are!), the Parish Council, Parochial Church Council, and the Royal Oak. We are also very grateful to Chris Thomas and local contributors for fund raising at the Christmas Craft Fair this year, raising over £500.00 towards our costs which are basically printing and postage costs only.

Over the last twelve months, our wider team of volunteers has worked to deliver timely stories (past and present), interesting photographs and updates and news to all corners of the parish each month.

We'd like to give a special shout-out to our exceptional delivery team coordinated by Chris Thomas and Doreen who deliver each month: Jane & Laurie, Katlyn, Jill, Elizabeth, Graham, Sarah, Nick, Caryn, Cheryl, Carol, David, Bill and Lesley.

Sadly, Jane and Laurie will be leaving the village in the new year. Thank you for your hard work! As a result, we have an opportunity for three or four new volunteers to join the delivery team. We need additional help to deliver copies of the village news next year to the following destinations: 1. The City and Oxon Place; 2. Mount Pleasant and Nell Hill; 3. Hinton Parva and 4. Someone who fancies a little drive to local book-swap phone boxes, churches, cafés and doctor's surgeries in the area. If anyone fancies burning off some Christmas calories and taking on these roles, we'd appreciate it.

Our gratitude extends to our advertisers whose support has sustained this non-profit operation. As volunteers, our mission is to strengthen local bonds through information sharing. Every penny raised goes directly into printing costs, emphasizing our commitment to keeping the community well-informed. Here's to another year of creating unity, celebrating milestones, and being the heartbeat of our vibrant villages!

Keep the content coming – "News Not Snooze"! We hope you're still enjoying reading the newsletter and we would love to hear any feedback, rants, complaints or praise or if you would like to help deliver for us too, please make contact by email to: BishopstoneEditor@gmail.com

We would like to wish you all a very Merry Christmas and a prosperous 2024.

Richard Walker on behalf of the Newsletter Team.



FESTIVE FOLIAGE

A fun and successful wreath making session at Bishy Village Hall on 2nd December.

Bishopstone Christmas Craft Fair 2023

Twenty years old this year!

On the evening of Thursday 23rd November, the Bishopstone Village Hall was alive with the buzz of the annual Christmas Craft Fair. Chris Thomas had pulled out all the stops again to ensure that the hall looked and felt festive and that there were great stalls selling high quality craft, including beautifully photographed calendars, vibrant stained glass, tasteful needlecraft, pretty jewellery, colourful ceramics, lovely mosaics and much more. By 7.00pm the hall was full of people in search of the perfect Christmas present, enjoying a glass of mulled wine and happily chatting to friends and neighbours they had not bumped into for a while. Children were able to visit Santa in his grotto and emerge smiling with a wrapped present and wondering why he had a Scottish accent!

Thanks to Chris and her helpers, Bishopstone Craft Fair has been a special event in the village calendar since 2003, and apart from the dreaded Covid years, has been held nearly every year since. Chris's first Christmas Fair came about when she wanted to find an outlet for her own craftwork and wanted to raise some money for the Bristol Children's Hospital, who had helped save her son Martin's life, and the village school, which both of her children attended. Over the years the fair has also raised money for other charities, including the RNLI, Bristol Royal Infirmary, Parkinsons disease, Big Breakfast, Guide Dogs for the Blind, Hope for Children, our parish churches, the hall and the local newsletter. Phew! That's a fantastic effort for the benefit of others.

She has been helped by numerous parents and villagers, too many to mention by name. Although I think Gill May deserves a shout out for stalwartly decorating the hall entrance and making and serving mulled wine for every craft fair since it started. For several years she also sold home-made Christmas puddings, which graced many a local's Christmas table.

In the early days Chris remembers travelling to Dorset to buy olives and other produce for the sale and selling Ramsbury ale. She also remembers how the school children used to make decorated jars of sweets to sell. She recalls one of the hams, given some years ago by Helen Browning, which fed one couple for a month! Some Pig!



Chris would like to thank all the helpers who have supported the fair over the years and those who have kindly donated raffle prizes.

Most of all, though, we owe a huge thank you to Chris for her hard work and commitment to ensuring that the village has had a delightful and friendly traditional event for the last twenty years which has supported local craftspeople and numerous charities.

Understandably, after 20 years Chris would now like to take a back seat and hopes that there is someone else with youthful vigour and enthusiasm who would like to take over the running of the fair from next year.

So, if you feel that you would like to be the one to keep this tradition alive, please contact Chris on 07789 414147. Go on, you can do it!

Merry Christmas everyone.

Sue Dent

Bishopstone Stores



So, the big day is just around the corner! I'm sure all your shopping is done, presents are wrapped and delivered or neatly waiting underneath the tree and your kitchen is bursting with yummy festive goodies?! Or, if like me, you are a little last minute.com, you will be starting to feel the inner panic that raises its head around this time of year!? And

that's when your village stores can really help you out... from a gift for a forgotten relative, extra gin required for unexpected guests or the double cream that the bright-lights supermarket down the road had sold out of...we will have a solution for you! Our gifting corner grows at this time and there is something for everyone – check out our Facebook and Instagram pages for inspiration. Anything you see here in the shop can be made into one of our wonderful hamper boxes or bags...perfect gifts that you don't have to wrap!

Our deliveries throughout Christmas will be as normal as our suppliers allow so we should be able to keep the fridges and shelves well stocked for you. We will have a meat delivery on Monday 18th which will include our

fabulous organic sausage meat, perfect for your stuffing or boxing day sausage rolls! The last dairy delivery is Friday 22nd when we will also have the wonderful Pippins Doughnuts and the last delivery from Astons Bakehouse will be Saturday 23rd, they won't be bringing any more bread until the 4th Jan so let me know if you need any extras! I am always very happy to take any pre-orders for anything that you know you will need, milk, bacon, eggs, veg etc. Just give me a call or pop in!

Christmas Opening Hours

Sun 24th Christmas Eve 9am - 3pm
Mon 25th Christmas Day CLOSED
Tues 26th Boxing Day 10am - 3pm
Wed 27th CLOSED
Sun 31st NYE 9am - 6pm
Mon 1st NYD 9am - 5pm
Tues 2nd Jan 9am - 5pm
Wed 3rd Jan CLOSED
Thurs 4th Jan CLOSED

@bishopstone_stores

@helenbrowningsbishopstonestores

RECYCLING MATTERS

Well, they're here – the Cheeky Panda Bamboo loo rolls have arrived but not in time for a proper test (I lead such an exciting life!), so a proper update next month.

And, it's here - it's CHRISTMAAASSSS! (Well, almost – by the time you read this). So here are some Christmassy suggestions for this year (if it's not too late), next year (if it is) or to consider taking into the New Year in a resolution-y type way.

If you are a ubiquitous Amazon user, you may have noticed that it stopped its charitable-giving Smile initiative, which donated a percentage of your spend to your chosen charity, earlier this year. Instead consider signing up and making any Amazon purchase through easyfundraising.org.uk and 0.5% of your spend will be donated to your chosen good cause, including all of the local schools. Easyfundraising is a cashback site where the money earned through lots of online retailers goes to a charitable cause. Amazon doesn't tend to feature on the more widely-used cashback sites like Topcashback or Quidco where the cashback goes to yourself. I'm a big fan of cashback sites but if you're in the dark and would like to know more or have a referral (which also earns money) then do get in touch via the Editor. I'll happily talk you through it and donate any referral fee earned to the charity of your choice.

I've been having a pre-Christmas clear-out and have sold several items on eBay this month. It is quite straightforward when you get into it and it is surprising what things sell – these figures are 'profit' after all fees and postage have been taken off – a Boots No 7 Facial Oil from a friend's advent calendar, £10.96: some Tiffany & Co packaging, £14.46. It's made quite easy for you – you can search to see if a similar item has recently sold to get a guide price and you can buy your reduced rate postage through the eBay site. I hope to explore the Vinted and Depop clothes and accessories selling experience for next month's article, to see how they compare. So, if you do have items that remain in good condition, as always, do consider selling them, donating them to a charity shop or giving them away on Olio before recycling them.

I'm a great fan of second-hand books and our family even has them on our respective Christmas wish lists – you get

so much more for your money! (I guess you need to know someone quite well before you consider giving them a second-hand present?) If you're after a particular title, then it's worth checking it out on a book price comparison site like JustBooks.co.uk. Amazon also sells second-hand books on behalf of other companies, but you do usually find it cheaper in my experience if you go direct. I haven't had any problem with using the companies that sell second-hand books – they all state the condition of the book so there should be no surprises. I've used them to buy all of my children's school textbooks – which can cost up to £35 each new – and have sold them on again afterwards.

We will be getting our old artificial Christmas tree down from the loft to decorate this year – according to the Carbon Trust, it takes 7-20 years, depending on the weight and materials used, to be better for reducing emissions than buying a new, commercially grown tree every year. Although there will still be the issue of its recyclability when it eventually reaches the end of its life. However, if you do want a real Christmas Tree, Lotmead Farm now sells both potted and rented versions which will help your green footprint.

Finally, if you're struggling to find a suitable present for someone and are keen to avoid as much commercialism as you can this year, why not make your own gift voucher – there are lots of templates online – personalising it as you see fit – promising anything from your time to cash. These might also be more suitable than a store's (plastic) gift card which can be limiting, have expiry dates and are unable to be recycled. One particular free one that I like is the Gift of Podcast certificate which can be found at the Gretchen Rubin (an author and podcaster) site. This allows you to 'gift' your recommended podcast and explain to the recipient how to subscribe if they're new to the experience. I finally learnt how to download podcasts this year so I could listen on car journeys – rather than being constrained to only listening when I had a Wi-Fi signal. Onwards and upwards as Gretchen says at the end of every podcast! And a very Merry Christmas and a Happy, Healthy and Green 2024!

Karen Walker



Our Christmas opening hours are

Saturday 23 December – open as usual

Wednesday 27 December – closed

Saturday 30 December – open as usual

We have been open for almost a year now and from January we will also be open on Fridays 10.00-16.00. Our volunteers are so keen, they are already signed up!

There have been quite a few internal changes which regular visitors may have noticed – we acquired some substantial shelving units from a shop that was closing down; one of our team converted a sideboard into a new counter and integrated our weighing scales into it. We also have a wider shelf in the window so we can have some better displays – the Christmas one looks amazing.

The next Repair Café is Saturday 27 January.

We haven't got any special events programmed for the New Year as yet, but keep an eye out for posters and on our web page for updates.

www.sustainableshrivenham.com
sustainableshrivenham@gmail.com

CHRISTMAS FAYRE AT BLOOMFIELDS

Bloomfields fine food

DELICATESSEN, DELI CAFE & FOOD TO GO

Best in Local, Regional and International Food

ORDERS NOW BEING TAKEN FOR:

CHRISTMAS HAMPERS **CHRISTMAS PARTY BUFFETS**

[WWW.BLOOMFIELDSFINEFOOD.CO.UK](https://www.bloomfieldsfinefood.co.uk)

ARTISAN CHEESES · OLIVES · PRESERVES · CHOCOLATES
COFFEES & TEAS · LOCAL BEERS, CIDERS & WINES · GIFTS

8 HIGH STREET, HIGHWORTH T: 766399
33 HIGH STREET, SHRIVENHAM T: 783999

THANK YOU FOR SUPPORTING LOCAL, INDEPENDENT BUSINESSES

Happy Gardens



by Jane Pearson

DECEMBER MUSINGS

Hello!

I read a fascinating article in last month's Telegraph (Saturday 11th November) about the need for flood resilient and weatherproof gardens. There is no denying that we're experiencing weather extremes. In parts of the UK, plants now have to cope with temperatures as low as -20C and as high as +40C along with prolonged drought conditions. "2023 is predicted to have been the hottest year on record", not to mention the deluge of rain from more frequent storm events: "6 out of ten wettest years have occurred since 1998". RHS Wisely garden manager Sheila Das sums it up nicely: "water is often in the wrong place at the wrong time!"

Note to self: Dig a very large pond for water capture and plant a lot of trees for shade.

FOR THE LOVE OF GARDENING BUILDING A SUSTAINABLE GARDEN FOR A CHANGING CLIMATE

Here's a few tips to help make your garden more resilient to our changing climate:

- Invest in water butts – the more the merrier!
- Ditch the fake grass. 1 in 10 UK gardens now have 'garden carpet' – their microplastics leak into the soil, and they can't take up rainwater.
- De-pave your garden - try to create more permeable surfaces for water to drain away.
- Create rain gardens by keeping the undulations rather than flattening them out, create areas for water to pool instead of eroding your soil when there are downpours. Dig out low lying areas to create ponds and expect them to be either full or dry, surround with marginal bog plants which survive rising and falling water levels.
- If your garden is prone to heavy flooding, consider raised beds, they'll stop your prize plants from drowning in mud.
- Plant trees, they mitigate flooding through their root network while their canopies slow the rains path onto the ground.
- Plant plants! More plants in our gardens will create healthy soil which is, ultimately the best water butt we have.

Resources:

Book: Tom Massey RHS Resilient Gardens
www.janepearsondesign.com (07811 367320) for further information & to book a private garden consultation with Jane

THE POTTING SHED

THINGS TO DO IN DEC/EARLY JANUARY

Put your feet up - relax and enjoy the festive break, I'll write a to do list for January!



Please visit my website at janepearsondesign.com/blog for Readers Question Time and much more!
www.janepearsondesign.com/blog

PLANT SPOTLIGHT

Look for plants that can tolerate extremes of temperature, here's some to get you started:

3 SMALL TO MEDIUM RESILIENT TREES



Birch(Betula)-all varieties



Crab Apple (Maulus)-all varieties



Sweet Gum (Liquidambar styraciflua)

3 RESILIENT PLANTS



Iris sibirica



Bulley's Primroses (Primula bulleyana)



Coneflower (Echinacea)

3 RESILIENT SHRUBS



Dogwood (Cornus) -all varieties



Cotoneaster



Castor Oil Plant (Fatsia Japonica)

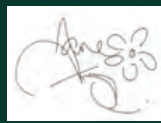
READER'S QUESTION TIME

"Should I cut back my Verbena Bonariensis plants before winter sets in? They're about 1m tall."

Leaving the foliage in place offers some frost protection and helps you see where the plants are in the border. The seedheads are a valuable food source for birds and the stems provide shelter to overwintering insects. You could venture outside and cut back any over long and broken stems now, but I'd suggest leaving the rest for a good spring trim.



07811 367320
janepearsondesign@icloud.com
The Lynchetts, Icknield Way, Bishopstone
www.janepearsondesign.com/hints&tips



Bishopstone & District Gardening Club

Contact: Marion Peck
01793 791 001

Room with a view, Garden Design Workshop Session 1. with Jane Pearson



We settled down, cups of tea/coffee and biscuits on hand, with our photos, paper, pencils and crayons to a fun, relaxed and inspirational insight into garden design with Jane at the helm.

Starting with a 'wish list' for our chosen view we began. With Janes guidance and prompting and using tracing paper to overlay the photo we gradually sketched out layers using form, shape, size, texture and colour to create our own concept. Much rubbing out and re sketching followed but by the end of the session we all had something to work on!

Next month We move on to filling those shapes and structures with the appropriate plants and colours to our final design, very exciting!gardening club and Bishopstone United Charities.



MOWERFIXER

maintenance/repair service
mowers, hedgecutters
strimmers etc.
for the Ridgeway villages

New & 2nd hand
garden machinery for sale

0789 979 1833
doug@mowerfixer.co.uk

DIARY DATES:

Wednesday 13th December in Bishopstone Village Hall 7pm : Jane Pearson Design : 'Room with a View Practical Workshop' Session 2.

I'm sure all those who attended the first session of Jane Pearsons Garden Design Workshop will now have some great ideas and be looking forward to session two, a follow up session to complete their design!

Don't forget to bring along your pencil case, containing a pencil, black felt tip pen and some colouring pencils, or crayons and an A4 photo (colour or greyscale or preferably both) of a view from your window that you would like to improve. Photograph quick tip: To help keep your focus on the scale and distance of your view, stand a garden fork in the photo, towards the back of the border.

AGM - January 2024

Details to be circulated nearer the event.

In the meantime I wish you all a very HAPPY CHRISTMAS and NEW YEAR and look forward to seeing everyone for an exciting programme of talks in 2024.

Marion Peck



Shrivenham & District Gardening Club

We kick off the year with Rebecca Brain's 'Mythology, Magic and Metaphor'. This is part 2 of the talk she did for us last year but only got half way through it! She's definitely back by popular demand. Because our usual Gardening Club date clashes with the panto rehearsals (oh yes it does!!), the talk will be on Tuesday 16 January at the usual time of 7.30 in the memorial hall.

We have a varied and interesting programme for 2024, which includes a talk from another Bishopstone resident, Helen Browning. Our Club holiday takes us to Lincolnshire (staying in Grantham) in June. There are still a few spare places if you are interested. We will also be having a trip to Wisley later in the year.

01793 782338

Ask Fanny



Notes and queries from readers, a response from our local agony aunt...

Dear Mrs H
I see there's a pub in Swindon offering 3 course Christmas suppers on some days at £6.99 per person. We could do with a pub like that in our village, don't you think?
Mrs Scrooge, Bishy

Dear Mrs Scrooge
I've heard about this place and had a very close look at their menu on t'interweb.
When you look at the ingredients, I'm quite surprised at how expensive it is, actually, although I suppose it cost a lot to incinerate all those one legged turkeys that failed to grow quickly enough on their Amazonian soya pellets. And the cost to the public health services of those exploited cheap overseas workers is probably quite high. You get what you pay for in this world, while the world lasts.
Yours in pomposity, Fanny H

Dear Fanny
There's the start of a sink hole where the High Street meets the pub car park. And there's the start of another sink hole in Church Walk, or whatever it's called. Do you think the two are linked? Could there possibly be - as was long rumoured in this village - a secret tunnel between the High Street and the church itself? Or possibly just a series of underground spaces where the Ashbury militants might hang out and take us all by surprise?
Mr H, Sea View

Dear Mr H
Utter tosh. These are not sink holes as far as I can see; they are just the result of negligence by the relevant authorities, viz The Church people and the pub people. As for the fanciful tunnel idea, it was only thought to run between the church itself and Prebendal farm house, so the bishop, as he was known at the time, could move unseen between his place of worship and his toy room. And I don't understand all of you and your constant digs at Ashbury - a perfectly lovely place for a quiet retirement. Debunked?
Mrs H (a different H)

Dear Mrs Hole
Thank you for encouraging this running commentary on the things that really matter to the people who live here (wife swapping, LGBT issues, etc etc). I see there's been another meeting about speeding traffic in our neighbouring village of Bishopstone, with lots of contributions from people who don't actually currently live there as far as I can tell! What fun it all is, all these outsiders telling us what we ought to be doing. My husband's Ferrari is capable of more than 150mph on a good day (with someone else driving) but it never exceeds 3 figures as it passes the pond - there are so many natural hazards, especially those cars outside the school. On the whole, it doesn't seem to be an accident blackspot, and we libertarians in HP always think that the more signs and man-made obstacles there are, the less likely is a driver to be actually concentrating on the road ahead. There's simply too much to read! Before you know it, you're up to your neck in the swamp.
Yours slightly anarchically
Mrs CC, Hinton Parva (where the road is pretty narrow but the new big cars are actually making it wider!)

Dear CC
At last. Some common sense. I reiterate my views as you'd expect. So long as you're not pushing a pram or a wheelchair, it's best to walk close to the middle of the road when you hear a Ferrari coming through. They soon slow down on account of their no-claims bonus, if nothing else.
Cheered, Fanny

Mrs F Hole will continue to be delighted to answer any reasonable and unreasonable queries from readers. Email me (Mrs F. Hole) with any queries: BishopstoneEditor@gmail.com

AnitaLawless

Transformational Coach & Mental Health Trainer



FEELING SAD, STALE OR JUST STUCK?

Wanting change is the first step.

Overcome the mental obstacles that are constraining your life. Use our accomplishments to enhance the quality of your life.

IMPROVE YOUR

- ✓ Decision making
- ✓ Confidence
- ✓ Empowerment
- ✓ Personal relationships
- ✓ Overall health & wellbeing

ELIMINATE

- ✓ Stress
- ✓ Anxiety
- ✓ Exhaustion

AUTUMN SPECIAL OFFER

6 x 1hr sessions only £300

As your coach I believe in your ability to grow, change, overcome and recover. I will empower and encourage you to develop optimal physical and mental health and sustainable personal change.

GET IN TOUCH

anita@mentalhealthecology.com
07916 151 095
mentalhealthecology.com

Individually tailored sessions, helping you achieve a happy, fulfilled life, wherever you're starting from.

Well Hung Framing by Kate Herbert

I am Kate, your local bespoke picture framer.

I have a passion for framing and enjoy working collaboratively with my clients in selecting the best mounts and frames for all projects and budgets - from box framing, medals and memorabilia to paintings, prints and certificates. I also offer frame repairs and reglazing.

Please call, text or email to arrange a visit to my studio in Watchfield to discuss your requirements.

07710 348 263 bykateherbert@gmail.com

Check out my website for further information

wellhungframing
wellhungframing.co



All Areas of Outstanding Natural Beauty renamed as National Landscapes

On 22nd November, it was announced that Areas of Outstanding Natural Beauty will now be known as 'National Landscapes'. This includes the North Wessex Downs AONB which will now be called North Wessex Downs National Landscape

North Wessex Downs National Landscape

This new name reflects the national importance of these protected landscapes and the vital contribution that they make to protect the nation from the threats of climate change, nature depletion and the wellbeing crisis, whilst also creating greater understanding and awareness for the work that they do. The name underpins the ambitious targets that, nationally, the National Landscapes family has for nature recovery and mitigation of climate change.

The statutory designation of AONB and its primary purpose, to conserve and enhance the natural beauty of the landscape, remain the same. And the North Wessex Downs National Landscape Partnership will continue to collaborate with

the thriving, diverse communities living and working here to restore ecosystems, provide nutritious food, safeguard against drought and flooding, and nurture people's health and wellbeing.

Our new logo reflects this name change and depicts the best-known landscape icon in the North Wessex Downs - the Uffington White Horse - and the big skies enjoyed on top of chalk downs which are such an integral part of this stunning part of the world.

More information can be found on the North Wessex Downs website here:

www.northwessexdowns.org.uk/areas-of-outstanding-natural-beauty-renamed-national-landscapes

Contact:

Ann Shepley
Communications Officer
North Wessex Downs National Landscape
Usual working days: Monday, Tuesday, Wednesday
Office: 01488 685440
Mobile: 07810 637387
Email: ann.shepley@northwessexdowns.org.uk

CRYPTIC CHRISTMAS win a £10 voucher



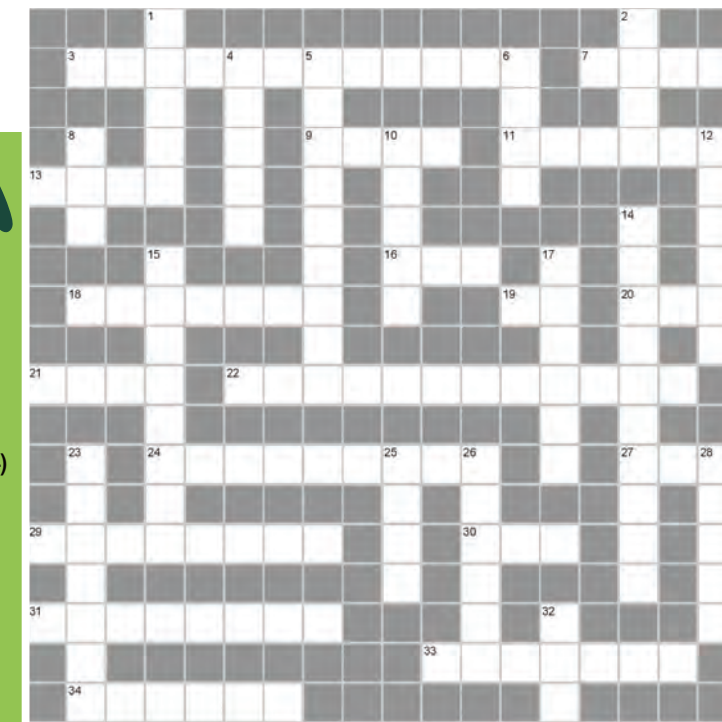
November's issue brought us two entries. Tom, the Chef at The Royal Oak pulled the name from the hat (well, bowl), this month. Still no hat available! Well done to the other correct entry from Pete Walker but this month's winners were **Abi and Gary Pass**.

Across

3. Sad, itchy arms distress Noel (9,3)
7. Letter to Father Christmas results in blisters (4)
9. Celebrity rats return (4)
11. Coming VAT end is absurd (6)
13. Topsy alcoholic starter is reward for naughty behaviour (4)
16. Flea lost tail and reversed present maker (3)
18. Wrap resentment a little tense (7)
- 19 (with 25 down). Three prostitutes laughing! (2,2,2)
20. First lady's last night (3)
- 21 (with 27 across). Learner eulogy upsets intended cremation target (4,3)
22. Old lady talks, quenches, pees madly (6,6)
24. City girl by Leicester border (9)
27. See 21 across
29. One bird roost is two aloud and most of three (4,4)
- 30 (with 6 down). Were any dubious resolutions made? (3,4)
31. I hear the new secret agent is a tasty treat (5,3)
33. Stunning cheese companion (7)
34. First great risotto is no cave (6)

Down

1. Sings fa-la-la under bridge? (5)
2. Long for evergreen (4)
4. Insect in South Africa initially eats mince pies (5)
5. Tom's elite parasitic plant (9)
6. See 30 across
8. Treat of youth? (3)
10. Endless anger left saint (5)
12. Gobble meat? (6)
14. Highest degree in former temperature scale without you (2,8)
15. Tenth cinder this month (8)
17. Adoptive father in San Jose, Philadelphia (6)
23. Some of the three kings are very smelly (7)
25. See 19 across
26. Feed box to eat French (6)
28. Why no energy? Eco! (5)
32. I see, I hear, I slip (3)



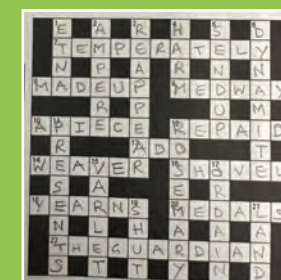
Be in it to win it!

REMINDER: Please submit your completed crossword by the end of each month either by foot or by email to Lynne at Bishopstone Stores, who will drag a winning name from a hat if more than one of you is bright enough to complete it. When you read your name in the next edition to say you've won, you can nip back to the shop to be presented with a nice shiny voucher for £10 off your bill at the pub or in the shop.

Email: shop@helenbrowningsorganic.co.uk

OUR NOVEMBER WINNERS ARE
Abi & Gary Pass

Well done! Please collect your voucher from Lynne at the pub shop



November Solution from Abi & Gary Pass

A Trip Back in Time

Bath Christmas Market Trip
Sunday 2nd December 2012

(first published in Mogs' old newsletter in February 2013)

Towards the end of last year, a notice appeared in the newsletter advertising a coach trip to the market. It was a biting frosty, cold morning and looking at the vehicle I have to say it was definitely vintage - coach is possibly a stretch too far, more 'bus at best, although to me it was a charabanc! The sort of thing you see at Stonehenge with the new age travellers attending the summer solstice, with big daisies painted on the side. It was an unfortunate colour; it reminded me of dog sick (careful with the spelling here Mogs). We set off at 9.30, all excited, a happy mixed bunch of mums, dads, and children, and headed for the motorway, the driver stoically graunching his way through the gears. Arriving at Lakeside Coach Park at 11.00, any man walking his dog could have overtaken us at any time, but thankfully at junction 18 it is all downhill to Bath. The men in their dayglo jackets and clipboards who were directing the coaches roared with laughter when they saw us. We were surrounded by all singing, all dancing intercontinental this and that, single and double deckers from as far away as North Wales, County Durham and Manchester, with their TVs, air con, heaters etc. all decked out with tinsel, streamers, and Christmas lights - then there was us - the windows dripping in condensation as the frost had melted on the windows after such a long journey. I quickly reminded the coach men that we in fact were the quality end of coach travel. Anyone could hire one of those huge monstrosities. Ours was very special, and in any case didn't they realize that we were from Bishopstone!! How dare they laugh.

We all toddled off to the market, while our wonderful driver took our vehicle back to Brinkworth for a valium and lie down to get their strength up to come back to Bath to pick us up at 4.30. A lovely day was had shopping and browsing, Gladys and I starting off with a very large bacon baguette, followed by free fudge, various tastings - just an eating frenzy frankly, and all downhill from then on, as if we needed it (me looking more like the co-op horse, rather than a racing snake). We did buy quite a few things though and had a thoroughly enjoyable day, and



wandered back to the coach park at the appointed time. We all walked proudly out to our little chara - squeezed between two huge double decker monsters, with their wheels half way up our windows and we crawled out with several other coaches to join the tea time traffic. Now as we all know, it's a long steep climb up to the motorway and it did cross my mind that at some point thirty of us could be doing a bit of pushing, but as we started the climb, painfully slowly, the driver made the decision to turn off right and make for junction 17 as 18 was completely clogged with traffic. Once we had left the lights of Bath, it was very dark on the bus (which had no internal lighting), so in our situation we had two options, sleep or sing, so we sang. We started off with a good mixture of carols, The Twelve Days of Christmas and on to Feed the World, followed by a good rendition of Abba etc. I did just wonder at one point why other motorists were beeping at us, but I naively thought it was out of respect for this little old lady of the road, and dismissed it. We suddenly stopped.

We thought it was to release the huge backlog of traffic behind us, but it was more to do with our vehicle lights getting ever dimmer.

The driver made a couple of 'phone calls, some people got off the 'bus to tiddle, not easy with oncoming traffic, and a big deep ditch full of water behind the bus stop - the rest of us sat it out. Then set off slowly towards civilisation and street lighting. At a huge car park the driver announced that a relief coach was coming to pick us up. The bad news was that it had started to rain, the good news was that there was a kebab stall with an awning. The poor kebab man almost had a seizure as thirty-odd of us rounded his van, frightening him to death as he didn't see us coming, all squeezing under the awning to keep out of the rain. His Christmas had come early. We all asked for chips, and he filled 3 deep fat fryers, while we waited patiently. He turned the radio up, and we all sang along to Skyfall and gave that Adele a run for her money. Two men arrived and ordered large Donner Kebabs; now I can eat for England, but I have to say there is a limit surely. I watched these being assembled and couldn't believe the amount of food being crammed into the dishes. One has to say it would have kept India going for a week!

The heated continental coach arrived, we all got on with our containers of chips with ketchup/mayo, or for total decadence - cheesy chips. I don't think the driver had the heart to tell us that hot food was not allowed on the coach. But the best thing of all - the coach had a loo - Ta-dah!! Off we set for junction 17 and home - leaving our driver with the dear old lady sitting on the side of the road. We arrived at Bishopstone and came down the bank, hissing and spitting, not us - the air brakes on the coach, and were dropped off at the school at 8.15pm.

A happy fun day enjoyed by all of us, and the children were brilliant.

I found the experience a complete breath of fresh air, that in this stifling nanny state we are all forced to live in, where 'elf and safety rule the world, we were able to travel on this small' bus decades old, with no seat belts, heating, or any of the modern-day trappings which are now a must. So, a big thank you to Amanda for the fantastic organisation of it all, and giving us all a bit of pre-Christmas magic, also both the Sues at the school, for their input, help and support and please can we do it all again next Christmas, in that same little old dinosaur lady of the road? I don't feel she needs any tweaking, although efficient working lights could be useful!

Very British. Very village. Very Bishopstone.

Love Roz

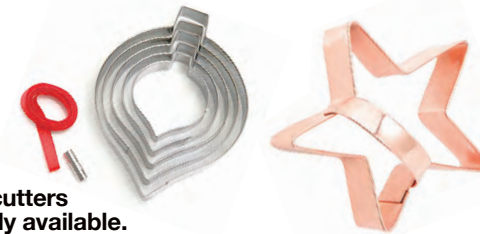
Why wasn't Amanda mentioned in the New Year's Honours List?



The Gadgeteer

Get ready...Bake!

Biscuit cutters are an essential kitchen Gadget! Biscuit cutters were not invented by one person, but they rather evolved over time. Becoming initially popular with the gingerbread man shape in the 16th century, by the 1800s they were made of tin, and later copper, developing into many shapes and sizes. Today, cookie cutters are often made of plastic, aluminium, copper and stainless steel. Steel cutters are durable and dishwasher safe. My go-to cutter would be a round fluted 8cm, round 8cm followed by a heart and gingerbread man and a star. You will find this will cover most eventualities. (Squares and oblongs can of course be cut by hand). At most cookshops and department stores you can build up a drawer (cake tins are also most useful for storing cutters) of wonderful designs from butterflies to bees, Easter eggs to Xmas tree shapes or even full nativity sets or perhaps a "design your own Christmas tree biscuit" bauble cutter!



Stainless steel cutters
from £1.50 widely available.

Inside the Peach Pip

With Christmas fast approaching and snow forecast in Edinburgh, where I sit writing this just a few minutes walk away from the Royal Mile, I am reminded of the story of Ebenezer Scroogie. Although no longer preserved, in the kirkyard of the Canongate on the Mile used to sit a gravestone to Mr Scroogie, a prominent 18th Century merchant and baillie in Edinburgh. As far as we know, he was good-spirited and well-thought-of in the community, despite his reputation as a serial philanderer - you could get away with that as a man in the 1700s, I think. Men possibly still can. Anyway, he was commemorated with a respectable headstone in the kirkyard, referencing his work dealing in corn (or 'meal'):

EBENEZER SCROGGIE

A MEAL MAN

I wonder if you can see where this is going...

Fast-forward to 1841. One Mr Dickens is in Edinburgh. He decides to have a wander around the kirkyard. I wonder if the lettering on Mr Scroogie's grave was

We're here for everyone

We give people the knowledge and confidence they need to find their way forward - whoever they are, and whatever their problem.

Volunteer with us and make a real difference to people's lives. Find out more at training.email@caswindon.org.uk

If you would like to talk to us about volunteering call 01793 402106



already beginning to fade, as it appears to Dickens to read:

EBENEZER SCROGGIE

A MEAN MAN

And what kind of a man, Dickens asks himself, could be so distasteful a character as to invite such an indictment on his gravestone? Thus was born the now notorious Christmas-hating Scrooge. Poor Mr Scroogie, and anyone else named Ebenezer who has been stigmatised.

So, I suppose this Christmas my literary recommendation is Dickens' A Christmas Carol. I hear the Muppets tell it pretty well if you can't be bothered reading it.

Happy Christmas! I look forward to seeing some of you at Bishy Village Hall for Carols Around the Tree, and at the Oak on Christmas Day. Nothing like home for Christmas.

God bless us, everyone...

Anna



CHURCH NEWS

A Letter From The Vicar

A couple of months ago, I wrote about the process the four churches in Bishopstone, Hinton Parva, Wanborough and Liddington are currently undertaking to choose a name that might represent us as one locality. In the new year, we will be considering combining into one administrative body (Parochial Church Council) under the name of the Wellspring

Villages. We will be asking for views from people throughout the four villages to decide if this is the right course of action for us, so watch this space!

The reason Wellspring Villages was chosen was based on two main factors. First, the obvious! Throughout this area, there are many springs and wells, including in our church yards! I went for a beautiful walk over Charlbury Hill last week and was constantly seeing and hearing the trickle of running water. It was beautiful. The name feels like it really represents something about this part of the world.

The second reason is a bit deeper. Wells and springs give us water, something that is essential for life, but also symbolic of other and less obvious needs. This comes up throughout the bible. In Proverbs, the writer says "Wisdom is the wellspring of life to one who has it, but folly is the punishment of fools" and "The words of the mouth are deep waters; the wellspring of wisdom is a gushing stream." (Proverbs 16: 22 and 18: 4) When Jesus meets a woman by a well in Samaria, he says "Everyone who drinks of this water will be thirsty again, but those who drink of the water that I will give them will never be thirsty. The water that I will give will become in them a spring of water gushing up to eternal life." (John 4: 13-14) We need water to sustain life, but we also need those other things that come from God alone.

I am really pleased about this choice of name and it is the basis for our prayers as we move forward: that God will grant us wisdom, a wellspring of life that gushes up to eternal life.

Rev. Chris Hunter

Church Services in the Benefice
full details on www.achurchnearyou.com

Day	Date	Time	Venue
Sun	17.12.23	10.30	St Mary's, Holy Communion
Sun	17.12.23	15.00	All Saints', Christingle
Sun	24.12.23	10.30	All Saints', Holy Communion
Sun	24.12.23	17.00	St Mary's, Christingle
Sun	24.12.23	23.30	St Andrew's, Midnight Mass
Mon	25.12.23	10.30	St Swithuns', Christmas Day
Sun	31.12.23	10.30	St Andrew's, Holy Communion
Sun	07.01.24	10.30	St Swithun's, Holy Communion
Sun	14.01.24	10.30	St Andrew's, Holy Communion
Sun	21.01.24	10.30	St Mary's, Holy Communion
Sun	28.01.24	10.30	All Saints', Holy Communion



A prayer for all our needs

Lord God,
we pray "Give us today our daily bread".
Give us what we need this day,
inspire us with wisdom
to reject what we do not need,
and give us the yearning for those things
we need not for the body but for the soul.
May the water of life,
from deep wellsprings,
burst within us to eternal life.
Amen.

Food for Thought

Mobile fish and chip van

Available for private parties,

weddings and all functions.

Find us each month at Charlbury Stables

(See the diary in this publication for actual dates)

Post Code: SN4 0DW

Tel: 07515 288414

Email: grahamrowcliffe58@outlook.com



SWINDON & DISTRICT SAMARITANS TURNING THE BLUES INTO BREWS IN 2024



Brew Monday is a Samaritans takeover of 'Blue Monday' – the third Monday in January which is often dubbed 'the most difficult day of the year' (although there's no scientific evidence to back this up). From 15 January we'll be encouraging everyone to get together for a cuppa and a catch-up.

At Samaritans we know there's no such thing as 'Blue Monday' and that feeling low isn't just reserved for Mondays or any random day in January... so we're saying out with the blue and in with the brew!

For Brew Monday 2024, Swindon & District Samaritans are inviting everyone to hold a Brew Monday to catch up over a cuppa – it's such a lovely way to check in with the people you care about. It doesn't matter if it's a Monday morning or a Saturday night, or if you're drinking green tea, black coffee or orange juice! It also doesn't matter if you catch up in person, virtually or over the phone. If you're sharing a cuppa and listening, then you're helping to make a difference in beating the winter blues.

Now, more than ever, sharing a cuppa is more than a drink – it's about reaching out, checking in and staying connected.

As well as reaching out to family and friends for a cuppa and a chat it's also possible to raise vital funds for Swindon & District Samaritans to help ensure there's always someone there for anyone who's going through a tough time.

People can donate whatever feels right to them. If they want to, they can bring their own cuppa & cake whilst donating what it usually costs. A donation of £5 is all it takes to cover the costs of Samaritans answering a call for help.

If you need to know more – please reach out to: swindon@samaritans.org – and if you brew up to chase those blues away and can support Swindon & District Samaritans at the same time, please donate via our website:

<https://samaritanscommunity.enthuse.com/swindonanddistrictsamaritans/profile>

Samaritans are always here every hour of every day of the year – talk to us any time you like, in your own way, about whatever's getting to you:

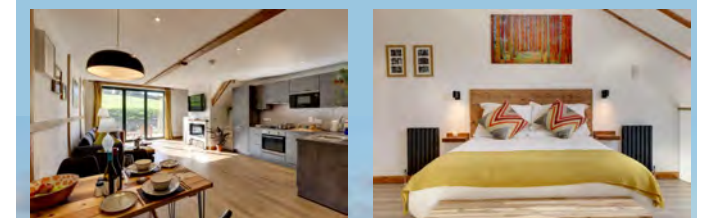
T: 116 123 – calls are free E: jo@samaritans.org



The remarkable Kate Wright will now be running monthly fundraising suppers at The Burj, Foxhill, to support the music department at Highworth Warneford School rather than Bishopstone School. They take place on the second Monday of each month. These suppers have so raised thousands of pounds for extra school excitement. They take place on the **second Monday of each month**.

Contact: WrightK@warnefordschool.org.uk if you'd like to take part/enjoy/help.

Only £17 a head, starts 7.15pm for 7.30pm.



Jane Pearson Design

Gardens & Landscape
Local Landscape Architect & Garden Designer

Design-Planting-Consultation
Project Monitoring

Creating joyful gardens & landscape infused with your personal style & requirements.

Let's make plans!
+44 7811 367320
www.janepearsondesign.com
email janepearsondesign@icloud.com

Pre Registered Member of the SOCIETY OF GARDEN DESIGNERS

The Parish Times

Bishopstone Parish Council, serving Bishopstone, Hinton Parva & Russley Park

December 2023



The parish council
would like to wish all
residents a very

MERRY CHRISTMAS

with all good wishes
for 2024



FOLLOW ALL OUR LATEST NEWS ON FACEBOOK @bishopstoneandhintonparvaparcouncil

MATTERS ARISING

UPDATE ON FIBRE

Residents may have noticed that the work to install fibre appears to have slowed down.

The Parish Council asked Openreach for an explanation and time-scale.

Openreach says that some underground ducts appear to have collapsed since their initial survey, requiring unexpected and unplanned civil engineering works.

Regrettably, it seems these works will not take place until February.

20MPH SCHEME AND SCHOOL SAFETY ZONE

Around 20 residents attended a public meeting in Bishopstone in November to hear about Swindon Borough Council's plans for road safety improvements in the village.

Useful feedback was provided to officers, who have subsequently amended their proposals once again. Revised plans from the borough council will soon go out to public consultation.

The parish council will post information on the website (bishopstoneandhintonparva.org), Facebook ([bishopstoneandhintonparvaparcouncil](https://www.facebook.com/bishopstoneandhintonparvaparcouncil)) and notice-boards as soon as it is available.

PLEASE NOTE: All parish Council meetings will be held at Bishopstone Village Hall until further notice due to flood damage at the village hall in Hinton Parva

LOVE WHERE YOU LIVE

The Parish Council always extends a warm welcome to all new and prospective residents of the Parish and is happy to answer any queries they may have.

The Parish contains two conservation areas and everything south of the Icknield Way is also in the North Wessex Downs Area of Outstanding Natural Beauty. Many houses are also listed.

Naturally this brings with it all sorts of challenges when it comes to tree felling, house alterations, etc. There are also other regulations aimed at preserving the character and beauty of the parish. If in doubt, please check, we are only a phone call away. The Parish Council is always available to answer any questions you may have. Contact the Clerk, the Chair or any member of the council - the councillors email addresses appear below.

BISHOPSTONE PARISH COUNCIL

Ms Jaine Blackman (Clerk)

Phone: 07913 819422

Email: Clerk@bishopstoneandhintonparva.org

Mrs Val Brodin (Chair)

ClIr.valbrodin@gmail.com

Mr Ian Thomas (Vice Chair)

ClIr.ianthomas@gmail.com

Mr Julian Cooke

ClIr.juliancooke@gmail.com

Mr Nigel Crisp

ClIr.crisp@gmail.com

Mr Tom Green

ClIr.tomgreen@gmail.com

Mrs Gill May

ClIr.gillmay@gmail.com

Mrs Lucille McGrath

ClIr.lucillemcgrath@gmail.com

Mr Steve Bell

ClIr.sbell@gmail.com

Mr Gary Pass

ClIr.garypass@gmail.com

The Parish Council's policies and documents can be viewed at bishopstoneandhintonparva.org/

PARISH COUNCIL MEETINGS 2023/24

Meetings will be held at Bishopstone Village Hall until further notice due to flooding at Hinton Parva

2024

15th January **Bishopstone**

5th February **Bishopstone**

4th March **Hinton Parva (to be confirmed)**

1st April **Bishopstone**

Meetings begin at 7.30pm. Late changes are shown at bishopstoneandhintonparva.org/parish-council/ and on the notice boards. Members of the press and public are welcome to attend.

Useful Information

Swindon Borough Council: Reception Premier House 01793 465055/465056; **Civic Offices** 01793 463668; **Wat Tyler House** 01793 463725

For problems with waste collections call Streetsmart on: Monday to Friday 8am-8pm 01793 445501; all other times 01793 466453

Report fly-tipping or pot-holes to SBC: swindon.gov.uk/my-account
Wiltshire Police non-emergency number (less urgent than 999): 101
Borough Councillor Gary Sumner - GSumner2@swindon.gov.uk

PARISH COUNCILLORS' KEY RESPONSIBILITIES

Finance Nigel Crisp/Lucille McGrath

Footpaths and Highways Julian Cooke (Hinton Parva)/Ian Thomas (Bishopstone)

Pond & Island Steve Bell/Ian Thomas

Hinton Parva Village Hall Val Brodin

Bishopstone Village Hall Steve Bell

Hinton Parva Charities Peter Cooke (PC nominee)

Bishopstone United Charities Doug Stevens (PC nominee), Christine Thomas (PC nominee), Laurie Manktelow (PC nominee)

Trees Julian Cooke (Hinton Parva) Ian Thomas (Bishopstone)

Responsible Financial Officer Jaine Blackman (Clerk)

Planning Ian Thomas/Tom Green

Website/IT Nigel Crisp/Gary Pass

Policies Gill May

School liaison Lucille McGrath

CURRENT PLANNING APPLICATIONS

All planning applications, their history and all supporting documents can be viewed at: www.swindon.gov.uk/planning Planning issues are discussed at the monthly Parish Council meetings. Public representations are heard prior to the start of the meeting.

S/PAOTH/23/1377 Prior Approval notification for the change of use of a Dutch Barn to provide 1no. Large dwellinghouse (Class C3) at West Hinton Farm, Hinton Parva Lane Hinton Parva.

S/HOU/23/1385 Erection of a tennis court with surround fencing and family swimming pool with retractable cover, stone paved surround and terrace at Hill Manor House, Hatchet Hill, Hinton Parva.

PENDING DETERMINATION

S/HOU/23/1274 Erection of a single storey rear extension with balcony at Newhaven, Church Walk Bishopstone.

S/HOU/23/1211 Erection of single storey side and rear extensions at The Folly, Nell Hill, Bishopstone.

S/23/1069 Demolition of existing chalet, erection of 1no. dwelling (Class C3) at The Chalet, Church Row Hinton Parva.

S/HOU/23/0391 Erection of a detached outbuilding/ home office at Hergest Ridge, Cues Lane, Bishopstone.

S/23/0837 Change of use of land from agricultural to private equestrian (retrospective).at land at White Hill, Hinton Parva.

S/HOU/23/0958 Conversion of existing garage to a residential annex at The Old Inn, Bodyhorse Hill, Hinton Parva.

S/23/0190 1 no. dwelling at land adjacent to Westhill House.

GRANTED S/HOU/23/1134 Erection of a single storey outbuilding for at 1 Little Hinton Farm Cottages, Little Hinton Lane, Hinton Parva.

S/23/0961 Erection of a Stable Building at land to the north of The Grove, Hinton Parva Lane, Hinton Parva.

VIEW THE PARISH WEBSITE AT WWW.BISHOPSTONEANDHINTONPARVA.ORG

Photo of the month

Mark Jordan is our December photographer of the month. You may have seen his photographic skills appearing on local Facebook pages and he was kind enough to send us a lovely selection of his photos this month. Thank you Mark. We love this one which has captured our stunning local scenery.

Become the neighborhood paparazzi sensation with your camera wizardry! Every month, our crack team of discerning judges will don their imaginary monocles and select a lucky winner. Brace yourself for stardom, as your masterpiece gets the full-colour treatment and becomes the talk of the town. It's not just a photo, it's your ticket to local fame!

SEND US YOUR SNAPS

Email:
BishopstoneEditor@gmail.com

WAYLAND

Private Hire

0800 7999682

Shrivenham based taxi service
Local, long distance, Air & sea ports

waylandprivatehire.co.uk



Enviro PEST CONTROL

We are a local business providing a professional and friendly service to commercial and domestic customers in Bishopstone and all surrounding villages.

Fully qualified - Insured - 30 years experience
10% discount off standard rates with this ad

Mobile - 07379 276187
Email - enquiries@enviropestcontroltd.co.uk
www.enviropestcontroltd.co.uk

SWINDON SKI & SNOWBOARD SERVICING

WWW.SWINDONSKI.CO.UK
enquiries@swindonski.co.uk

Ian Thomas 07778 807783

BURSARIES FOR EDUCATIONAL EXPENSES

Little Hinton Educational Foundation offers bursaries to help young people in our parish with expenses related to their education.

If you are under 25, live in Hinton Parva or Bishopstone, and need help with the cost of books, travel, materials, equipment or other learning resources required for your academic, social or physical education, please get in touch.

We need to know your name, age, address, where and what you are studying, and what costs you could use some help with.

Please write to Mrs Valerie Brodin,
The Coombs, Hinton Parva SN4 0DH



COME AND SUPPORT YOUR LOCAL CLUB

Why not join us at our next home game for some proper local football, great people and a good time!

RECREATION GROUND · SHRIVENHAM · SN6 8BJ

VILLAGE hall news



BISHOPSTONE

Carols Around the Tree

Get festive! And come Join us for Carols around the Tree 17.30hrs Saturday 23rd December. Look out for song sheets on Facebook. Bring a lantern or candle and a warm coat!

Cleaning Fairy Vacancy!!

Debbie has dusted, dazzled, and amazed us all with her voluntary upkeep of the hall for a few years and she has decided to hang up the towel! On behalf of the Committee, I would like to thank her for her hard work, turning up unprompted each week, and magically transforming the hall back to freshness if only until the next booking.



Should anyone have an hour to spare each week to take over these voluntary duties we can provide the wherewithal materials, support and guidance.

Contact:

Richardw@eddingtons.co.uk
07740 106 222

Spring Clean – November

Our delayed clean up took place on a damp November day. A big thanks to Mark Jordan who joined the Committee to scrub floors, paint skirting boards and put up the Christmas Tree. Roz provided delicious bacon rolls – thanks to all!

BISHOPSTONE ALLOTMENTS AVAILABLE

On behalf of the Church Commissioners and their land agent Strutt & Parker, several half allotment plots are now available to rent by the local community. A perfect opportunity to grow your own fruit and vegetables.

The price is £8 per half plot per year
(April to March)

No permanent structures such as sheds are allowed but low level storage is permitted.

Although livestock cannot be kept, bee keeping is encouraged by the owners.

If you are interested in taking an allotment in Bishopstone,

contact Steve Bell on 07598 185643



VILLAGE HALL HIRE

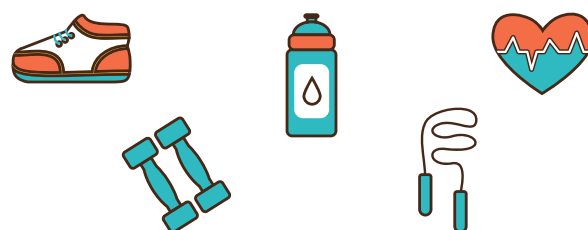
Both Bishopstone & Hinton Parva Village Halls have availability if you would like to hire either of them.

BISHOPSTONE INFO/BOOKINGS:
Jo Homan: jo@theorchardproject.org.uk
Tel: 07714 745 408
Hourly rate: £11 residents, £15 non-residents

HINTON PARVA BOOKINGS:
Janet Hawkins: 01793 627301
Email: jaymaybee@hotmail.co.uk
Hourly rate: £8 residents, £12 non-residents

DUE TO FLOODING, NO BOOKINGS TILL MARCH

NEW BISHOPSTONE VILLAGE HALL FITNESS CLASSES



SMALL GROUP PERSONAL TRAINING SESSIONS

Now being held in
BISHOPSTONE VILLAGE HALL

TUESDAYS 9.30am

The Group Personal Training sessions offer a chance to workout with up to 10 like-minded people to improve health and fitness.

ALL ABILITIES

Everyone is encouraged to work at their own level of fitness.

45 MINUTE SESSIONS

Involving a variety of exercises and fitness equipment, which are varied every week.

Contact Lorna for more details:
Lorna.sams@outlook.com

HINTON PARVA

First, the good news! Our Village Sing Song & Get Together will be taking place at Batt's Farm Barn (opposite the church) on Saturday 23rd December at 5pm, thanks to the kind generosity of the Smith family.

Unfortunately the Village Hall will remain out of action until March next year – when we hope to have a grand re-opening ceremony – aka a Village Supper! You will hopefully be able to marvel at the Hall in its refurbished glory! So far, due to the flood damage, we know that the kitchen units, a stud wall and the wooden paneling have to come out. The kitchen floor has to be replaced and a new wall erected as the plasterboard is contaminated with 'black' water. Fortunately the lovely wooden floor in the main hall has been saved but will need to be removed to facilitate the clearing out of the mud and detritus which remains beneath it and to replace the under floor insulation. We're still trying to establish if any of the electrics will need replacing.

Hope to see you at the Village Sing Song & Get Together!
Karen Walker on behalf of Hinton Parva Village Hall Committee

HINTON PARVA BRIDGE CLUB

New members always welcome

Hinton Parva Village Hall

**CURRENTLY CLOSED DUE TO FLOOD
PLEASE CHECK FOR UPDATES**

WITH DALE OR JIM

FRIDAY 7PM

For more information, contact
Dale and Jim Mitchell

Email: hintonbridge@hotmail.co.uk

Tel: 01793 627301

Hinton Parva

Christmas

Village Sing Song & Get Together

DEC 23

5.00 PM

Free MULLED WINE, MINCE PIES & LIGHT REFRESHMENTS

ALL WELCOME – CHARITY COLLECTION IN AID OF 'SAFE FAMILIES', Charity No 1150405

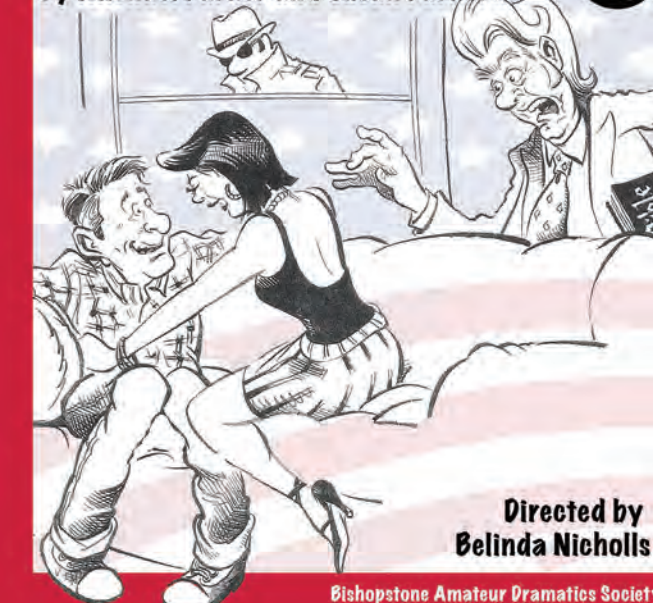
COME & SOCIALISE WITH FRIENDS & NEIGHBOURS FOR AN HOUR

Batt's Farm Barn, Hinton Parva (due to Hall flood damage)

RSVP Preferred: Karen.walker2701@gmail.com/07866 837247

SIN, SEX & THE C.I.A.

By Michael Parker and Susan Parker



Directed by
Belinda Nicholls

Bishopstone Amateur Dramatics Society

Bookings now open for your post-Christmas pick-me-up

Bishopstone Amateur Dramatics Society is once again busy rehearsing to entertain you with a post-Christmas pick-me-up.

This year's production is "Sin, Sex & the C.I.A." by Michael Parker and Susan Parker, playwrights of the BADS 2013 favourite, The Amorous Ambassador. Sin, Sex & the C.I.A. is a fast-moving farce with a complex and hilarious plot full of double entendres, performed by your favourite local thespians, with some newbies to boot.

The set team are once again re-constructing Bishopstone Village Hall stage and scratching their heads as to how to manage those clever visual tricks to ensure the performance is seamless. The amazing Belinda Nicholls returns as director to ensure the performance is second to none and your diligent cast members are learning their lines on trains, planes, car journeys and dog walks!

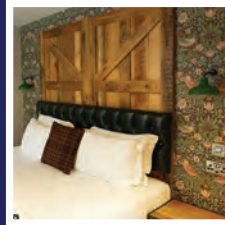
It will be a night out that promises hearty laughs and one that will lift those gloomy winter blues.

Performances will run from Wednesday 10th to Saturday 13th January 2024. Bishopstone Village Hall doors and bar open at 7pm and curtain up at 7.30pm.

Tickets are £8.50 (Wed/Thurs, with £6 concessions) with all Fri/Sat tickets at £10.

To book your tickets call or pop into Helen Browning's Royal Oak (Tel. 01793 790481) and why not book a pre-theatre supper while you are there?

This amateur production of "Sin, Sex & the C.I.A." is presented by arrangement with Concord Theatricals Ltd. on behalf of Samuel French Ltd. www.concordtheatricals.co.uk



Find us online



The Royal Woke Diary



More turnips, less pork. That's our mantra for 2024, which will excite a large number of you. We might veer off the turnip route of course, since there's a limited amount of this precious commodity. There's quite a few people in this world who'd love a turnip right now, though.

What got me thinking about our humble root crop - source of much humour, for me at least - was Richard Green's column a month ago, explaining in rational terms his view on farming and our farmed landscape if the world continued down its veggie and vegan path, which, honestly, it must if we're to sort out some of the ghastly problems we've created for ourselves.

My own views on this occasion correlate a lot with his, in itself an unusual occurrence, but with some added manufacturing experience. We as a business have no problem with serving more and more veggies and vegans - I sometimes think we ought to expand our portfolio, of course, under pressure from the boss here - and are more than happy to create bespoke vegan dishes, made of lots of Eastbrook fresh greens for example, whenever asked. But we don't and won't serve the 'meat substitute' highly processed items that at some point in the last few years appeared to be all the rage. As Richard noted, a lot of the businesses established to create meat free pork chops or meat free bacon have gone under, or massively reduced their ranges. I spent a day in a vegan ready meal manufacturing plant in Bavaria, about 3 years ago, with the MD telling me laughingly that he was having difficulty keeping investors from beating down his door. That's

probably changed a bit. Anyone who sets foot inside a factory like that would be appalled at what it takes to make (mostly ultra) highly processed vegan food. It's a complete de-construction process.

Lots of the protein element comes from peas and beans. But not in the form of peas and beans. These things are grown in Eastern Europe (it was Ukraine at the time), and processed and dehydrated down to a powder form, then transported a thousand miles to the factory where they were rehydrated, mixed with pasta, for example, or dehydrated potato starch (yum yum), then various food additives to give colour and flavour. What a surprise. Energy, massively heavy; environmentally, appalling. Shocking food. Makes taking pigs to an abattoir seem environmentally benign.

So if you're contemplating the veggie/vegan route, be aware. Picking fresh fruit and nuts from the hedges and all the low hanging apples that we mostly ignore every year would be the start of a much better route.

As for the pub, apart from the less pork, more greens mantra (almost all from the farm), come and enjoy yourselves here in our eccentric spot. The hottest place in the village most days, open almost all the time from 8am till 11pm seven days a week, serving good and bad stuff all day, and in particular try our pre-theatre suppers on Jan 10-13, so you can doze happily through the village play on those nights. Big lunches Boxing Day and New Year's Day. On New Year's Eve, you know by now that everyone's in bed by 10....

TF

f @helenbrowningorganic

HELEN BROWNING'S
ONE FOR TODAY - FARM FOR TOMORROW

Bishopstone & Hinton Parva WI

theWI
INSPIRING WOMEN

The November WI had a different venue for their meeting. They were unable to meet at Hinton Parva hall as this had unfortunately been badly flooded. The meeting was moved to Ashbury Hall where even though it was a very wet evening there was a good turn out of members who were very glad to get out of the rain and into a very warm hall.

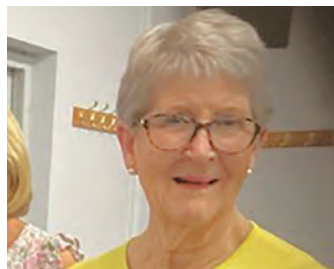
The speaker for the evening was Andrew Foley who is West Oxfordshire's Area Ranger for the National Trust. He gave us a fascinating talk which began with him telling us that Octavia Hill decided in 1895 that Londoners needed nice places to visit. Now there are almost 6 million members of the National Trust.

Andrew spoke briefly about Ashdown House which was given to the National Trust in 1926. From the house it's possible to see three different counties and sometimes three herds of deer. Andrew also showed some photographs which illustrated how beautiful the surrounding area looked when all the bluebells are out.

Andrew went on to tell us that his patch includes Alfred's Castle (which was a defended house and not a hill fort), Dragon Hill, Wayland's Smithy, The White Horse Hill and a large area of surrounding countryside. Andrew explained that The White Horse is thinning by about 50% and there are plans to restore it to the size it was in 1944. One fact that most members weren't aware of is that Kate Bush filmed the song 'Cloudbusting' on the hill.

The talk provided Members with lots of ideas of areas to explore and walks to take part in.

The second part of the evening was a celebration of Doris Brown's 90th birthday. Doris has been a WI member since 1994 and lives in Bishopstone. Members were delighted to be able to share in a celebration of Doris's birthday with wine and a special beautifully made and iced birthday cake.



New members are always welcome. If you are interested in joining please contact: janatwan@icloud.com



Local organic products delivered to your doorstep by 7:30am.

Milk, Butter, Yogurt, Cream, Eggs, Bread and much more!



www.shop.10green.co.uk—01793 688834—admin@10green.co.uk

BARNES COACHES

Request a free copy of our latest holiday brochure, and start planning your next adventure for 2024!

01793 821303 | BARNESCOACHES.CO.UK

BARNES 2024 UK & European Coach Holidays

FREE HOME PICKUP SERVICE ON TOURS 4 DAYS & OVER! See back cover of this brochure for our free and fast road map.

Spring, Summer & Autumn
01793 821303
barnescoaches.co.uk

Est.1986

Chappells

ESTATE AGENTS

Sales • Lettings • New Homes

Specialists in village property for over 35 years.

Contact us now for your free valuation

01793 618080

sales@chappells.uk.com lettings@chappells.uk.com



PUBLIC NOTICE

Swindon Borough Council (Waiting and Loading Restrictions and Parking Places Consolidation) Order 2021 (Variation No. 31) Order 2023

Notice is GIVEN of Swindon Borough Council's intention to make the above Order under the provisions of The Road Traffic Regulation Act 1984 and The Traffic Management Act 2004, the effect of which is to introduce 'School Keep Clear Markings' where stopping is prohibited Mon-Fri 8am to 5pm, 'Bus Stop Clearway' where stopping is prohibited 24 hours except buses and 'No Waiting At Any Time' on Hocker Bench (Hockerbench), Bishopstone.

A copy of the documents for the Order may be inspected online at www.swindon.gov.uk/trafficregulationorders

Objections or representations to the proposed Order should be made by completing the consultation form which can be found at www.swindon.gov.uk/trafficregulationorders under 'Stage 2 - Formal consultation' with reference (ST/TRO/Hocker Bench) by no later than 2 January 2024. Any objection or representation received will form part of a public record which may be made publicly available.

Head of Strategic Transport, Civic Offices, Euclid Street, Swindon, SN1 2JH 8 December 2023

For further information please email:
TrafficManager@swindon.gov.uk

Rachel Payne Professional Hairdresser

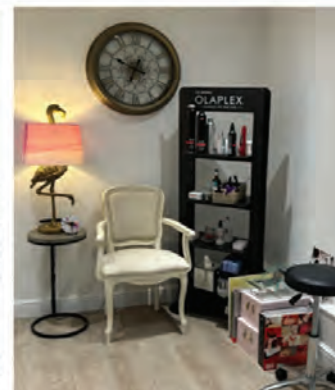
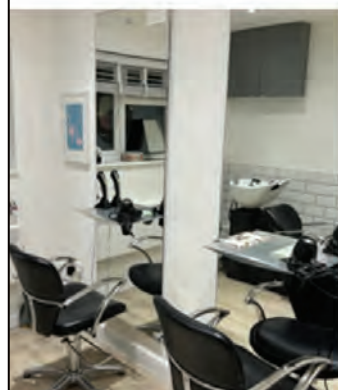


Established 25 years

Based in Bishopstone

Olaplex, Moroccan Oil
& Schwarzkopf Treatments
Available

For Appointments & Consultations
Contact 07527 607947



Pearce Funeral Services

Papermakers House
1 Rivenhall Road,
Westlea, Swindon
SN5 7BD.
T. 01793 422 422.



92 Ermin Street,
Stratton St Margaret,
Swindon
SN3 4NN.
T. 01793 832 072.

Our family service caring for you

- Family-run with compassionate service
- Prepaid funeral plans available
- 'Recommended' in the Good Funeral Guide
- Committed to the Fair Funeral Pledge

"Outstanding is an understatement. These people are the ultimate in care and compassion. They understand the needs of the family."

Sept 2023 online review.

www.pearcefuneralservices.co.uk



Golden Charter



A healthy and productive garden starts with healthy soil.

Use Soil Improving Mulch from Apsley Farms this Spring!



- 100% sustainable
- A by-product of green energy
- Free from peat, weeds, pests & waste
- Suppresses weeds
- Rich in N, P and K nutrients
- Repels slugs and snails
- Locks in moisture
- Available in 730 litre bulk bags



£90 SPECIAL OFFER!
730L mulch bulk bag plus 10L Plant Food with FREE delivery*
Our Natural Plant Food is organically certified. Available in recycled 5L containers.
*central UK postcodes.

sales@apsleyfarms.com

01264 554433

The Language Centre
at Shrivenham Station

Come and join us at your local, friendly language centre.

New term starting 8th January 2024

Daily English classes to suit all abilities – you choose how many



French



Italian



Evening Classes

German



Spanish



- Professional Teachers
- Friendly, no pressure

- Sociable
- Cultural activities and visits

Contact us now:

The Language Centre at Shrivenham Station, 7 Axis Road, Watchfield SN6 8SQ

Email: languagecentre7@gmail.com

www.shrivenhamlanguagecentre.co.uk Tel: 01793 784881

Bryn Llinos

A holiday cottage close to Beddgelert in the heart of Snowdonia

4* Rated with 5* Reviews

Excellent for beaches, mountains, walking, cycling and mountain biking

Heritage steam railway just 50 metres away at Nantmor Halt (Porthmadog to Caernarfon)

Discounts available for local residents to Bishopstone, please contact: brynllynos@yahoo.com

www.holidaycottages.co.uk/cottage/64657-bryn-llinos



HERITAGE TREE CARE

Professional Tree Surgeons

**Comprehensive Service
Qualified Staff
Fully Insured**

- ✓ Pruning and Shaping
- ✓ Felling and Removal
- ✓ Hedge Cutting
- ✓ Stump Grinding
- ✓ Tree Planting

Free quotations and advice
Call Ian Walding (N.C.Hort / N.D. Arb)

01793 790210

Email: ian@heritage-treecare.co.uk
www.heritage-treecare.co.uk



Watchfield Opticians

Opening hours:
9am – 5:30pm Monday to Friday
9am – 1pm on Saturday

Your local Opticians situated next to the Co-op in Watchfield.
With parking available right outside and easy access.

Full Eye Examination.
OCT and OPTOMap scanning.
NHS funded eye tests available for those eligible.
Children's Eye Test.
Contact Lenses.
Hearing Tests and Ear Syringing.

Great choice of glasses and sunglasses to suit all tastes and pockets.



2 Majors Road, Watchfield, SN6 8TQ
T: 01793 783848 E: info@watchfieldopticians.com
www.watchfieldopticians.com



WEBBS Builders Merchants

Established for 4 generations

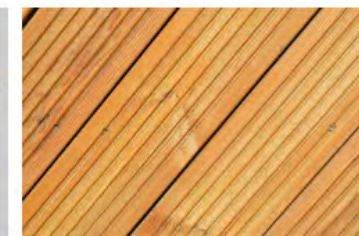
Well stocked, high quality products at competitive prices



Fencing



Garden Paint



Decking



Building Materials



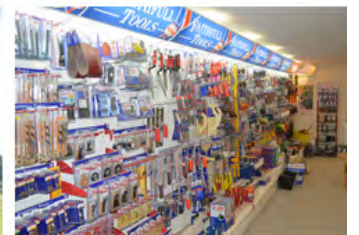
Treated Timber



Custom Gates



Railway Sleepers



Hardware Shop

Friendly staff - always eager to help

Local delivery available



Open Monday to Friday 7:30am to 5pm, Saturday 8 am to 12 noon
Please note we are not open on bank holidays

WEBBS, Southdown Farm, Faringdon Road, Longcot, Oxfordshire, SN7 7UA
(please do not follow sat nav)

01793 783 879
sales@webbswood.co.uk
webbswood.co.uk

CREATIVE GRAPHIC DESIGN & ILLUSTRATION
DIGITAL WEB SEO EMAIL FOOTERS
SOCIAL MEDIA ONLINE ADS E-MARKETING
ANIMATION CREATIVE 3D FLIP BOOKS
PRINT LOGOS BRANDING MARKETING
ADVERTISING CREATIVE COPYWRITING
STATIONERY BROCHURES PACKAGING
POS GREETING CARDS BUSINESS CARDS
LEAFLETS FLYERS LARGE FORMAT
BANNERS FLAGS VEHICLE LIVERY
SIGN WRITING PROMOTIONAL ITEMS
MERCHANDISE EXHIBITION STAND DESIGN
AND PRODUCTION AND MUCH MORE

INFO@LULI.UK | 07795 086 197
© LULI.UK | 2023



**FIND US
ONLINE**

www.bishopstoneandhintonparva.org

f /groups/bishopstoneandhintonparva

General Information

Send us your
DIARY DATES
Email:
BishopstoneEditor@gmail.com

Contributions

If you'd like to write an article or submit any photography please email Andrea or Val for consideration in the next issue. We aim to distribute the newsletter on or around 15th of each month.

DEADLINE for any considerations will be the last day of the previous month but we welcome submissions sooner.

If you would like an advert designing for placement in the village news, please contact Andrea who offers a discounted rate for Village News adverts.

We are non-profit!

The Village News is created and run by a small group of volunteers and is a non-profit organisation affiliated to Bishopstone Village Hall. Reg Charity no 271165.

If you would like to make a donation to help with the upkeep please contact Treasurer Andy P, or there are additional copies available and a donation box on the counter in Bishopstone Stores.

Team

ADVERTISING:

Graham Curley
graham.curley42@gmail.com

Russell Hatch
russell_hatch@ebamooba.co.uk

PUBLISHING EDITOR:

Andrea Wadsworth
andrea@luli.uk

SUB-EDITOR:

Val Brodin
valbrodin@gmail.com

CREATIVE COPY:

Tim Finney
Richard Walker
richardw@eddingtons.co.uk

TREASURER

Andy P
andrewpocock@yahoo.co.uk

DISTRIBUTION:

Christine Thomas
littlecot2010@hotmail.co.uk

Doreen Cooper
01793 792 965

Diary Dec 2023 - Jan 2024



2023	Time	Event	Place	Contact
25.11.23 - 23.12.23	9am - 5pm	Roves Farm Christmas Experience	Roves Farm SN6 7QG	MUST PREBOOK: rovesfarm.co.uk
12.12.23 - 31.12.23	Various	Snow White Panto. (10.30am, 2.30pm, 7pm, 1pm, 5pm)	Wyvern Theatre SN1 1QN	0343 310 0040
S 16.12.23	9am	Wanborough Farmer's Market (3rd Saturday of every month)	Wanborough Village Hall	Lorna 07903 210 505
S 16.12.23	12.00 - 4pm	Bourton Christmas Craft Fair	Bourton Club SN6 8HZ	@bourtonclub
16.12.23 - 24.12.23	11am, 2pm, 4pm	Santa's Christmas Wish Performance	Swindon Arts Ctr. SN1 4BJ	0343 310 0040 santashows.co.uk
S 17.12.23	11am - 4pm	Christmas Craft Fair - Wantage	King Alfred's Head, OX12 8AH	kingalfs.com
S 23.12.23	5pm	Hinton Parva Village Get Together & Christmas Sing Song (pg.17)	Batt's Farm Hinton Parva	karen.walker2701@gmail.com
S 23.12.23	5.30pm	Bishopstone Carols Around the Tree (pg.16)	Bishopstone Village Hall	
S 24.12.23	Christmas Eve			
M 25.12.23	Christmas Day			
M 25.12.23	11.30 - 2pm	Pub Open for drinks (no food)	Royal Oak	01793 790 481
T 26.12.23	Boxing Day			
M 01.01.24	New Year's Day			
8.1.24 - 28.3.24		New term at The Language Centre New students welcome	7 Axis Road Watchfield SN6 8SQ	languagecentre7@gmail.com 01793 784881
10.01.24-13.01.24		BADS Performance: Sin, Sex & The CIA	Bishopstone Village Hall	Book: Royal Oak 01793 790 481
F 12.01.24	5pm - 8pm	Food for Thought Hinton Parva: Mobile Fish & Chip Van.	Charlbury Stables SN4 0DW	07515 288414 Cash or Card
M 15.01.24		Samaritans Brew Monday	(pg.11)	jo@samaritans.org
T 16.01.24	7.30pm	Shrivenham & District Gardening Club: Mythology, Magic & Metaphor, R. Brain Talk (pg.5)	Memorial Hall Shrivenham SN6 8AU	shrivenhamdgc@gmail.com
S 27.01.24		Repair Café - The Hub, Shrivenham (pg.3)	56 High St Shriv. SN6 8AA	sustainableshrivenham@gmail.com
F 09.02.24	5pm - 8pm	Food for Thought Hinton Parva: Mobile Fish & Chip Van	Charlbury Stables SN4 0DW	07515 288414 Cash or Card
F 08.03.24	5pm - 8pm	Food for Thought, Hinton Parva: Mobile Fish & Chip Van	Charlbury Stables SN4 0DW	07515 288414 Cash or Card
Every Tuesday	9.30am	NEW Fitness Classes! All abilities (pg.16)	Bishopstone Village Hall	lorna.sams@outlook.com
Fridays	7pm	Hinton Parva Bridge Club (check location due to flooding)	(Pg. 17)	hintonbridge@hotmail.co.uk
2nd Mon of month	7.15pm	School fundraising supper, now supporting Highworth Warneford School Music Department	The Burj, Foxhill	WrightK@warnefordschool.org.uk
2nd Thurs of month	7pm Start 7.30pm	WI: Bishopstone & Hinton Parva WI	Bishopstone / Hinton Parva Village Hall	Jan Chapple janatwan@icloud.com

Church Services - pg 10 Parish Council Meetings - pg 13

The views of individual writers expressed in this magazine do not necessarily reflect those of the editors, the parish council or the church. If you have any feedback or questions, please contact one of the editorial team listed to the left. Apologies for any stray typos. We try hard to catch them all but occasionally some escape. You may also deliver items by hand to Bishopstone Stores and Lynne will kindly pass anything on to us. Please make sure that you include any names and contact details so that we may get in touch with you. None of these personal details will be published unless we are specifically asked to do so.

Tell us your thoughts!
'LETTERS TO THE EDITOR'
Email:
BishopstoneEditor@gmail.com

Dates are correct to the best of our knowledge at time of going to print. Please see Facebook for any interim updates.