



# VILLAGE NEWS

Nov 2023



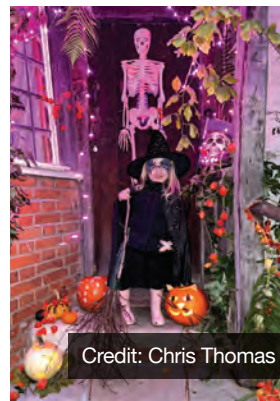
**'Ridgeway Poppies'**  
Credit: Russ Stein

## AUTUMN FLOODS HIT HINTON PARVA

During the last month, we've witnessed the unfortunate impact of the recent heavy rain on our cherished Village Hall in Hinton Parva, leading to its closure due to flooding. Our sympathies extend to the residents of the adjacent cottage, who have also endured the challenges of excessive moisture. We wish a swift recovery for all affected.

In light of the Village Hall's temporary closure, please reach out to the relevant contacts for any hall-related activities in the upcoming months, and stay tuned for updates on Facebook.

On a positive note, we are delighted to announce that the Hinton Parva Christmas Village Sing Song and Get Together will proceed as planned, with the venue to be determined. For further information, please refer to page 15.



Credit: Chris Thomas

## Bishopstone's Halloween celebrations

were a hit, showcasing creatively adorned village homes. Congratulations to all for their excellent efforts!

## PROMOTE YOUR BUSINESS DURING 2024

**In our well received newsletter!**



Secure your advertising space in the 2024 Village News today, available on a first-come, first-served basis.

With limited space, act promptly to reserve your spot.

Various ad sizes, including 1/8 page (new), 1/4 page, and a few 1/2 page options, will be offered for 12 consecutive months.

**Contact: BishopstoneEditor@gmail.com**



**'Sorry, I didn't hear that.'**  
Credit: Dennis Coop, The Wyncies



## A Snippet of Bishopstone History

### Loss of Bishopstone Cottages

Forty-four years ago my family came to Bishopstone and bought Finch Hill Cottage in the City. We sold a comfortable, warm, centrally heated modern house and bought a cottage with no electricity whatsoever upstairs, and minimum electricity downstairs, consisting of three light bulbs to provide light to three rooms. The coal was kept under the stairs, with a pantry next to it. Our friends and family thought we were completely mad, but we loved it. We were a family of four, and a dog and a cat. The boys were young, (Nigel not yet school age) and we were keen to move into a small community in the country.

The village had excellent amenities, two pubs, two shops, a school, church and a decent bus service. Newspapers delivered to the door daily, wet fish every week, milk delivered daily by Grace and Pete. (Now retired and living in Wanborough.) Mark and Mary (Lee) ran the Royal Oak, Dick Mitchell ran the True Heart together with Jim and Joy Ball. Joan and Les (Morris) bought and ran the shop and Mrs Smith in her 90s ran her shop next to the Royal Oak. Halcyon days. The village was made up with mainly thatched cottages, and a few modern(ish) buildings. This was long before the extension of private houses in the Wyncies, Whatleys Orchard, properties built in Striblings' garden, Povey's Place and every green plot down the High Street, and even to the triangle at the top of the village! Most of you reading this will almost certainly not remember Miss Little's cottage. (Down by the big chestnut tree, up the incline on the left.) It was like walking into a Hovis advert 200 years ago. A total time warp, and a huge step back in time. The cottage had never altered since her grandparents' time! I visited every Saturday for a chat, and to deliver groceries. She had a huge black-leaded grate which she cooked on, (many designs back from an Aga) a massive kettle, which she filled with a tin jug, and was operated by a pulley and chain. She had a home-made rag rug in the hearth, and her cat Minnie was always curled up asleep on it. She had a very big, loud ticking grandfather clock. Oilcloth cut out like teeth on her mantelpiece, sticky with age. Feather mattresses on her beds, and fat, heavy eiderdowns. Elsie Little was firmly in the camp of, "don't mend it if it ain't broke." It would have been the ideal



museum for the village. How wonderful that would have been, and how all of us, especially the children, would have benefited from it.

We lost the shops when Mrs Smith died in 2015, and Joan and Les fell victim to John Sainsbury when the supermarket was built on the A420. Then the authorities tried to close the school, and the village can be grateful to wonderful people like Margaret Woodward, Robyn Britton and others no longer with us, who fought a fierce campaign to save the school -and won! It's all thanks to their hard work and determination that we still have the school, otherwise it would have gone the same way as the shops!

I write this not in anger -more from overwhelming sadness that these cottages with their unique historical value in the village are one by one being demolished to make way for yet another new build. Of course these villages must evolve and move with the times to guarantee their survival-I totally get that -but these developers never know when to stop! And now it's Jean's turn ... a solid, freestanding stone cottage, warm and dry, (which you would know if you were in there as often as I was) has gone. A cottage which has stood for hundreds of years, and stood the test of time, has been obliterated, as if Jean and her cottage had never existed! Does it always have to be at the expense of these unique dwellings? What a price to pay! Tragic doesn't cover it! Who will be the next for the bulldozer I wonder?

Sometimes, ladies and gentlemen, the word "progress" has a lot to answer for.

Roz

## Bishopstone Stores

Dare I say that the big 'C' is now just around the corner? Not entirely sure where this year has gone, or whether we even had a summer or not, but we are now definitely in autumn! Even though the leaves are falling and the evenings are dark, don't forget that the shop is still open till 6pm every evening, except Sundays (3pm close).

For the highly organised amongst you, we are now taking orders for your Festive meats – organic turkeys, our own gammons and hams and our fabulous selection of large organic beef cuts which were a new, and very popular, choice last year. We will also have our organic sausage meat available, either plain or flavoured with juicy cranberries or leek and apple. Why not make your own stuffing this year, or even some yummy sausage rolls for Boxing Day?!

The shop shelves are getting stocked up with other delicious treats, perfect if you are hosting this year, a great solution to the foodie gift dilemma or that little something to take along to a party! The gifting corner is also expanding to help you find the perfect pressie. Everything has been carefully sourced by us, to make sure you have a great choice of quality, thoughtful and sustainable goodies. It's definitely worth popping in for a browse, you're bound to find a treat for yourself or someone else! Keep an eye on our Facebook or Instagram pages as I'll be posting regularly with new stock and ideas for you.

We will also be a posting point for the Scouts Christmas

Post so you can buy your stamps, post your cards and support our local Scout groups right here! Last posting day for these is 12th December so make sure you get them in on time!

Hope your festive planning is going well and hope to see you all soon!

Lynne

### Opening Hours

Monday – Saturday 9am - 6pm

Sunday 9am - 3pm

Instagram icon @bishopstone\_stores

Facebook icon @helenbrowningsbishopstonestores



## RECYCLING MATTERS

The humble toilet roll! Who knew it could be so complicated? I'm currently catching up with a podcast series and have just (re-)hit 'Covid Lockdown' where they are discussing the scarcity of toilet rolls and how they are so grateful for what we again take for granted. Gosh – it seems so long ago! Surely toilet rolls are all much of a muchness though, with little to choose between them, so swapping to a greener alternative could be an easy way to do less harm to the planet? Currently 27,000 trees are chopped down every day to make toilet rolls. The 3 options below use recycled paper or bamboo, which is thicker, stronger and more sustainable than traditional paper as the plants grow much quicker, use less water and absorb more carbon than trees.

The first thing I noticed is that toilet rolls are all different sizes so it is in fact difficult to compare, but this is my attempt in the table below. I'm not sure if this is yet another example of shrinkflation or whether size has never been uniform. To try and compare like-for-like as much as possible, all are 3 ply and I'm comparing prices based on the best value deal I could find – which is normally in (considerable) bulk. I used our current (bog standard surely? – see what I did there?!!) Kirkland (Costco) Triple Satin Bath Tissue (which performs well for us) plus a market leader to act as a comparison. Both are made from virgin wood, are wrapped in plastic and appear in the first 2 rows of the table with the greener alternatives below them.

Product	Size of sheet	Rolls per Pack	No of sheets per roll	Total Area per Roll	Price per Roll	Price per m2	Price per 100 sheets
Kirkland Triple Satin Bath Tissue	12.5cm x 11cm	40	240	3.3m2	£0.47	£0.14	£0.20
Andrex Supreme Quilts	12.4cm x 10.3cm	16	155	1.9m2	£0.59	£0.31	£0.38
Who Gives a Crap – Recycled Paper	10cm x 10cm	48	400	4m2	£0.92	£0.23	£0.23
Who Gives a Crap 100% Bamboo	10cm x 10cm	48	370	3.7m2	£1	£0.27	£0.27
Cheeky Panda Bamboo	12cm x 10.45cm	48	200	2.5m2	£0.71	£0.28	£0.36

Both Who Gives a Crap and Cheeky Panda are certified B Corps but all three of their products above come from China, which is understandable for bamboo but questionable for the recycled paper option. Who Gives a Crap, an Australian company, commendably donates 50% of its profits to charity to help people access clean water and build toilets for those in need. They do, however, individually wrap their rolls (but in paper) whereas Cheeky Panda don't. Cheeky Panda, a British company, also supports charities, and is vegan-friendly: apparently many companies use glue which contains animal products to seal their rolls, which doesn't need to be declared on packaging. All three products are bio-degradable and suitable for septic tank use.

So far we've tried the two Who Gives a Crap options as it was easy to buy small quantities locally for the experiment. My only misgivings about them were the sheet size - it's over a third smaller than our current buy and feels unsubstantial, so we end up using more which increases the cost still further - and the individual wrapping, which seems unnecessary for a sustainable product. I am keen to try the Cheeky Panda option and am going to have to commit to a 9 roll purchase (Waitrose, Amazon and Milk & More all appear to be reasonably 'local' retailers) to give it a go. It was the highest scoring Eco toilet roll option in recent Good Housekeeping and Countryfile tests so sounds promising. I'll report back.

Finally, another thing I've learnt in my toilet roll research – whether you decide to go green(er) or not, folding rather than scrunching your toilet roll uses less paper. Every day's a school day!

Karen Walker

## BISHOPSTONE CRAFT FAIR

ON THURSDAY 23<sup>rd</sup> of NOVEMBER 6pm to 8 pm

As well as the usual favourites there will be some new and different stalls ranging from original crafts to home/locally made produce.

A great opportunity for Christmas Shopping.

For any further information please contact me on:

07789 414147 or email: [littlecot2010@hotmail.co.uk](mailto:littlecot2010@hotmail.co.uk)

Chris Thomas

Please donate a bottle of something to our **BOTTLE TOMBOLA!**

all profits going to charity. Bottles can be dropped to Chris at Littlecot, High Street, Bishopstone



Our main news this month is that we have appointed a Manager to take over the day to day running of Our new Manager, Stephanie, has certainly hit the ground running! For anyone who came into the Hub during the early part of November they will certainly have noticed some sweeping changes – our book and jigsaw swap in October proved so popular, we have decided to give it a permanent home. Books are now offered for sale at the knockdown price of 50p for a paperback and £1 for a hardback. This month our pop-up is Christmas decorations and in December – children's toys. Since we opened in mid-January until the end of September, we saved over 1,800 kilos from going into landfill by recycling it in one way or another. Our aim now is to become a plastic-free community and we have signed up to this pledge. It doesn't mean we can't use plastic at all, but we want to get the whole community on board to drastically reduce single-use plastic. Each day 38.5 million are used – reusable bottles are far more environmentally friendly. We are also going to lobby local businesses to take this on board and re-think the way they operate with regards to packaging etc. We are also hoping to engage with local schools and hold plastic-free events. To this end, we are in the process of creating a steering group to take this initiative forward. If you would like to be a part of it, please do contact us. We have added to our 'R' list – Recycle, Reduce, Reuse – Recreate and Re-educate. Can you think of any more?

The next Repair Café is Saturday 25 November.

Remember we are open Wednesday 1000-1600 and Saturday 0900-1400.

[www.sustainableshrivenham.com](http://www.sustainableshrivenham.com) | [sustainableshrivenham@gmail.com](mailto:sustainableshrivenham@gmail.com)



# Happy Gardens

by Jane Pearson



## NOVEMBER MUSINGS

I've recently noticed that late autumn and early winter unleashes the tidier in me. I sense the coming winds and rain, and every crisp sunny day is both a blessing and opportunity to put the garden to bed and maybe, just maybe, sort out our ever patient, ever cluttered garage! I wonder how long it will be until first frost? Here's a seasonal poem by Robert Louis Stevenson:

### WINTER TIME

Black are my steps on silver sod;  
Thick blows my frosty breath abroad;  
And tree and house, and hill and lake,  
Are frosted like a wedding cake.

### THE POTTING SHED THINGS TO DO IN NOV/DEC

It's the perfect time of year for digging and tree planting. Check your winter protection.

- Check that greenhouse heaters are working.
- Insulate outdoor taps.
- Prune open-growing apple & pear trees (but not wall trained trees)
- Acers, birches & vines can be pruned from now until Christmas.
- Plant trees, hedges, and shrubs.
- Harvest leeks, parsnips, winter cabbage, sprouts, and remaining root crops.
- Take hardwood cuttings.
- Browse seed catalogues for perennials and other delights.

**10% DISCOUNT**

for Bishopstone residents

## PLANT SPOTLIGHT

Do you wonder why the tulips you lovingly planted have disappeared by the following spring? Unlike daffodils and other spring bulbs, many tulip varieties are reluctant to naturalise or spread, let alone reliably reappear, each year. The good news is that some tulips can be left in the ground and are more likely to return. Tulips love well drained soil and are ideal in pots where you can control the soil composition.

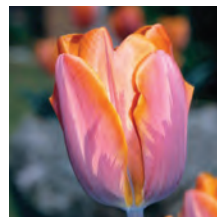
Here's a selection of tulips that are more likely to flower reliably each year:



Tulipa 'Orange Princess'



Tulipa 'Negrita'



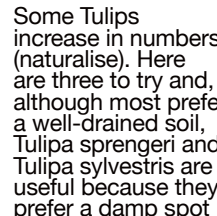
Tulipa 'Prinses Irene'



Tulipa 'Angélique'



Tulipa 'Don Quichotte'



Tulipa 'Sprenger'



Tulipa clusiana 'Cynthia'



Tulipa 'Sylvestris'



Tulipa 'Sprenger'

Some Tulips increase in numbers (naturalise). Here are three to try and, although most prefer a well-drained soil, Tulipa sprenger and Tulipa sylvestris are useful because they prefer a damp spot in part shade.

## MAKE YOUR OWN COMPOST & LEAF MOULD

**Why bother?** Both compost and leaf mould make a brilliant free-soil improver when spread over the soil's surface or lightly forked in. They add valuable organic matter that improves your soil structure, aeration and biodiversity, aids drainage of heavy clay soils, and boosts water retention in free draining sandy soils.

### Compost



**How to make it?** You can just pile everything in a heap but it's more efficient to either make or buy a bin, preferably two. A successful bin should exclude rain, retain some warmth, allow drainage, and let in air.

**Where?** The best location is a sheltered spot in partial or full shade that you can easily get to. Stand your bin directly on the earth or grass.

**What to put in it?** I like to layer mine with green and brown material, a bit like a lasagne!

Green Materials include grass clippings, annual weeds, crop waste, old fruit, vegetables and kitchen peelings, fresh coffee grounds, tea bags.

Brown Materials include dry shredded or chopped woody waste, dead stems, straw, shredded paper, shredded cardboard, and dried leaves.

**What not to put in it:** any cooked food, meat, fish, poultry or dairy, citrus fruit and pernicious weeds.

**Composting Tip:** The trick is too not let either green or brown materials dominate, you need a balanced mix to prevent a slimy sticky mess, usually caused by too many grass clippings.

**To air or not to air?** If time isn't a problem, you can just leave it alone to do its thing but 'turning' your compost a couple of times a year will add air and speed up the process. I do this by lifting the bin off the heap, reposition the bin and fork everything back in, from the top of the exposed heap to the bottom. I then close the lid and leave it alone to cook and start to make a new compost pile in an empty bin. Having two bins on the go seems to work well, one turned and resting, one in the making.

### When to use it?



When its dark brown, crumbly and smells like damp woodland. Use it as an autumn and or spring mulch and your plants will greatly appreciate your efforts.

### Leaf Mould

It's the perfect time of year to make leaf mould from deciduous trees and it makes a great soil improver and mulch. Leaves that break down the fastest include Oak, Beech, and Hornbeam. As a rough guide, the larger the leaf, the longer it takes. Green leaves must be shredded first. Here's two storage options to try:

1. Place the collected leaves into bin liners, moisten them if they're dry, then pierce holes in the bag with a knife or garden fork, tie the tops loosely and stack the bags out of sight for up to two years.

2. Make a square or round frame with chicken wire and stakes or bamboo canes in a sheltered part of your garden where the leaves won't get blown away. Make your leaf heap as large as possible (to hasten decay) and moisten it periodically if it becomes dry. Most leaves take about two years to break down and can then be used in the garden.

Happy Gardening!

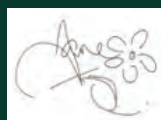
Please visit my website at [janepearsondesign.com/blog](http://janepearsondesign.com/blog) for a list of my favourite evening scented plants, Readers Question Time and much more!  
[www.janepearsondesign.com/blog](http://www.janepearsondesign.com/blog)

07811 367320

[janepearsondesign@icloud.com](mailto:janepearsondesign@icloud.com)  
The Lynchetts, Icknield Way, Bishopstone  
[www.janepearsondesign.com/hints&tips](http://www.janepearsondesign.com/hints&tips)



SCAN ME



## Bishopstone & District Gardening Club

Contact: Marion Peck  
01793 791 001

### Annual Quiz and Supper Night

A jolly crowd of people made it to the village hall in Bishopstone, despite it being Friday 13th and bucketing down with rain, to enjoy a sociable evening of quizzing and eating.



The quiz was devised and presented by our excellent quiz compiler, Cheryl Keen, who had us all scratching our heads and showing off our knowledge to our fellow teammates. Who knew that the largest cows' milk cheese ever made weighed 26.09 tonnes? Wow, not me.

The ominous fact that Boris Johnson was asked to form a government on a Friday 13th came as no surprise!!



The quiz was a very close-run competition throughout but the 'Carnivores' team finally came out on top, bagging a bottle of wine each.

A delicious meal of chilli con carne and baked potatoes followed by an array of delicious puddings was served by our smiling dinner ladies Chris and Debbie. The food had been prepared by a bevy of local ladies.

If that wasn't enough, there was a raffle with some great quality prizes generously donated by local businesses and gardening enthusiasts.



It was lovely to see so many people together from Bishopstone and the surrounding villages enjoying a good old traditional village do.

Many thanks to everyone who helped to make this event successful and raise funds for the gardening club and Bishopstone United Charities.

### Border Design Workshop at Bishopstone Gardening Club



#### Session 2: Wednesday 13th December

A two-part fun and practical design workshop is planned for November and December in Bishopstone village hall. The 'Room with a view' workshop is created and facilitated by Jane Pearson, a gardening club member,

local garden designer and horticulturalist.

Please bring along your pencil case, containing a pencil, black felt tip pen and some colouring pencils, or crayons and an A4 photo (colour or greyscale or preferably both) of a view from your window that you would like to improve. Photograph quick tip: To help keep your focus on the scale and distance of your view, stand a garden fork in the photo, towards the back of the border.

### DIARY DATES:

**Wednesday 13th December: Jane Pearson Design: 'Room with a View Practical Workshop' Bishopstone Village Hall 7pm**

Session 2. A follow up session to complete your design!

I'm sure all those who attended the first session of Jane Pearson's Garden Design Workshop will now have some great ideas and be looking forward to session two, a follow up session to complete their design!

If you missed the first one, don't worry, please come and join in, it's an informal event and I'm sure you could crib some ideas from those who have already started their designs!

Please bring along your pencil case, containing a pencil, black felt tip pen and some colouring pencils, or crayons and an A4 photo (colour or greyscale or preferably both) of a view from your window that you would like to improve. Photograph quick tip: to help keep your focus on the scale and distance of your view, stand a garden fork in the photo, towards the back of the border.

This will be our last meeting of 2023, my how it has flown, with all types of weather - hot, cold, wet, dry and not to mention those winds, in fact everything that it could throw at our gardens! But that's the wonder and pleasure of gardening, seeing how the plants manage to cope (mostly) with all these conditions and to give us no end of enjoyment.

Marion Peck







Notes and queries from readers, a response from our local agony aunt...

Dear Mrs H

I have heard that January's village play is slightly more low brow than in previous years, and features a bit more slapstick and some very entertaining innuendo. And some physical contact between members of the opposite sex. While not wishing to appear as an overly woke old fart, I do hope that the director is also thinking of appointing a so-called 'intimacy co-ordinator' to ensure that things don't get out of hand, as they say.

Yours, Mr NP, Bishopstone

Dear Mr P

I have also heard the same stuff as you, but I've also heard that the director is doing the intimacy co-ordination herself, much to my surprise. A specially adapted sofa (and sofa bed!) is being created, hopefully not with modesty screens all round it! I did approach a member of cast and he told me clearly that there was little prospect of unwanted hanky panky because most of the cast are so old they've forgotten what it takes. We will see!

Yours, intrigued!

Mrs H

Dear Fanny

I think we deserve an apology from your ageing Northern correspondent (Col) and his jibes last month about the village gardening society and its prize vegetable competition. We're modern, young, mixed gender, and very sociable, and poking fun at our prize courgettes etc (it's a pathetic old joke) does not bring credit to this organ, nor to Col himself. We are an easy target for a daft northerner, so please resist any further jibes along these lines.

Thank you, Irritated of Hinton Parva

Dear Irritated

I was placed under considerable pressure from Big Col, as he called himself, because he actually, and charmingly, popped round to see me and hand delivered his observation, with the added evidence that courgettes oop north are much more impressive. However, I am happy to accept your point of view, and further comments about the exceedingly sociable Gardening club will be kept to a minimum. Except when Big Col comes back to see me!

What fun

Fanny

Dear Fanny

Here on the hill, we have watched with an 'I told you so' attitude as the waters from global heating washed gently against the back doors in Wanborough, closed the rather unimpressive 'new' road out of that unfortunate village, and simultaneously flooded the caravan storage zone close to Commonhead roundabout. And yet those champions of sustainable growth at SBC press on with their plans to build more houses on that flood plain. Remarkable. Do you have an informed opinion on this form of progress?

Mr S, Ridgeway Cottages, Bishy

Dear Mr S

You have read my uninformed views on those SBC 'leaders' before in this column. Their idea of progress is creating more work for insurance assessors and asking the rest of us to pay more in our household premiums to cover all this mess. Lower Wanborough residents, and probably thousands of other people in settlements around the country, might as well resign themselves to a life working from home and hoping the fish and chip van can make it through at least once a week. With all the farmland also disappearing, there won't be much else on the doorstep to eat. In misery and despair at this home made mess

Fanny

Mrs F Hole will continue to be delighted to answer any reasonable and unreasonable queries from readers. Email me (Mrs F. Hole) with any queries: BishopstoneEditor@gmail.com

## LOCAL RAZZLE DAZZLE

### Watch this space!

Moving to Bishopstone has been an absolute pleasure after living in London for over 30 years. Although I was expecting tractors and cows, I had no idea it would really feel like I'd moved into an episode of the Archers, complete with local pub, thriving am dram group and even a flower & produce show. I had no idea that I would enjoy the gossip so much and that the countryside would be so very stunning. But best of all has been getting to know some of the local legends. It feels like an actual treat bumping into my neighbours, many of whom contribute creatively to the bigger picture of the village.



In particular, my neighbour Daz's journey into metal sculpture has been a delight to witness. This man's ability to transform farmyard junk into objects of beauty is quite extraordinary. So far he's made six house names and numbers for people in the village. Each design is based on the recipient's interests - I for example had the flower design because of my horticultural connections. Anyone who knows Daz won't be surprised to learn that car parts feature prominently. There are bits of wheel, cogs, leaf springs (had to look that one up), car jacks - everything is up for grabs, being recombined into something unique and very special. He loves working with chunks of metal, "because they're easy to work with, easy to bend, easy to weld and they make lovely shapes. When people spot one of my pieces, when they've stopped laughing, I'm hoping it lifts their souls a little bit." I asked him about the role of playfulness. His pithy reply: "gentle banter, with a healthy dose of p\*\*\* take." I can't wait to see what's coming next.

Jo Homan



## DICKIE'S diary

by Richard Green

Roger Evans is a retired Welsh dairy farmer who writes every Saturday for Western Daily Press. Roger tells a good story: His wife makes him a chicken curry. He eats the rice and curry sauce and finds himself pushing the small pieces of chicken around because the taste is different. They find the packaging from the bin and discover the "chicken" is made from plants. His left overs are deposited up the garden for the birds and cats. A week later they notice only the "chicken" pieces are left.

With the radio on whilst driving, I was listening to an interview in a studio with a dog owner who claimed that his dog had decided to save the planet and eschew meat in favour of a vegan diet. The dog was present in the studio but seemed unable to express himself as convincingly as his master.

We are beef producers. Our neighbour, Helen Browning at Eastbrook farm, is an organic dairy, beef, pork and lamb producer. Quite obviously, the rise of veganism is not good for producers like us. It's a free country still, so what we eat and what we choose for our diets is down to the individual, but it's a shame that some vegan zealots have crossed the line and made threats to stock farmers. Farmers are always uneasy with these campaigners when they have large stocks of vulnerable straw that could be torched as arson.

Maybe, the rise of veganism has stalled. It was reported last week that Marlow Foods, the parent company of Quorn, has crashed on lower sales and cost inflation. Quorn has a tie



up with KFC selling vegan burgers. Quorn's problems have been shared with the Yorkshire based sausage firm Heck, which has pulled its vegan products. Meatless farm is another that is in administration. Nevertheless, the RSPCA trustees have voted for 100% plant-based products at its functions yet benefits hugely, but now with hypocrisy, from its bespoke assurance schemes for livestock. By the time you read this the world rugby might be over but I doubt many of the players are vegan. And what would happen to England's green and pleasant pastures, with their role in capturing carbon, without grazing livestock?

## NOVEMBER PUZZLE: win a £10 voucher

In October, we received an unprecedented number of submissions, with five individuals successfully completing the crosswords. It's evident that as the weather cools down, more people are turning to indoor activities to pass the time. Lynne reviewed the answers and randomly selected Paula's name using her reliable sugar bowl since there was no hat readily available. Well done all, and continue the excellent effort!

Well done to other correct entries from: Neil Gray, Katherine and Dominic Robinson, Gary Pass and Debbie Clarke.

### Across

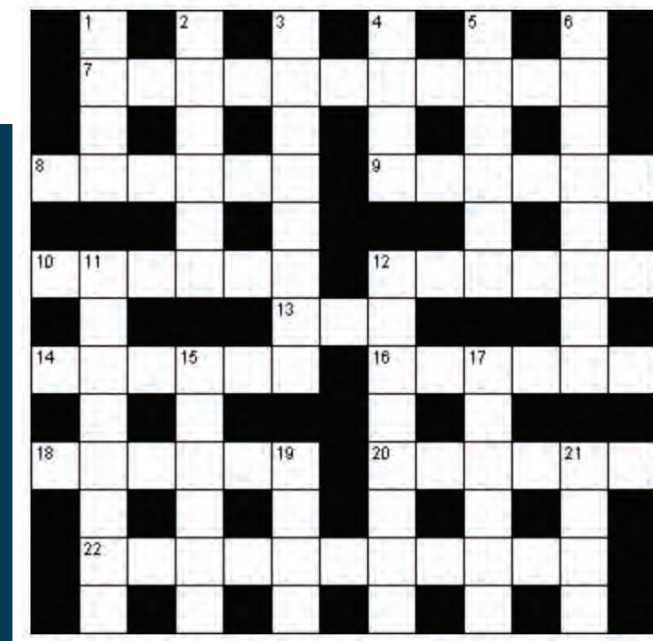
- 7 Rage at cathedral - in moderation (11)
- 8 Invented and resolved differences (4-2)
- 9 Kent river is European sea route! (6)
- 10 Each pastrycook's product is in one (6)
- 12 Rewarded for material assistance? (6)
- 13 Notice love causes bother (3)
- 14 A craftsman, we declare! (6)
- 16 Tool seen in small insanitary dwelling (6)
- 18 Longs for time with poles (6)
- 20 Gongs for damsel in distress (6)
- 22 I read naught new in a newspaper (3,8)

### Down

- 1 Volcano in Vietnam (4)
- 2 Current unit a member gets before (6)
- 3 Turn up again to harvest fruit (8)
- 4 Damage caused by hothead with a weapon (4)
- 5 Make fun of nudes dancing on piano (4,2)
- 6 It may end with explosion (8)
- 11 Party leader is not pleased with gifts (8)
- 12 One girl joined two (8)
- 15 Knave forced to travel (6)
- 17 Decree in road construction (6)
- 19 Thus composer closed (4)
- 21 Come down for real estate (4)

**OUR OCTOBER WINNER IS Paula Bartlett**

Well done! Please collect your voucher from Lynne at the pub shop

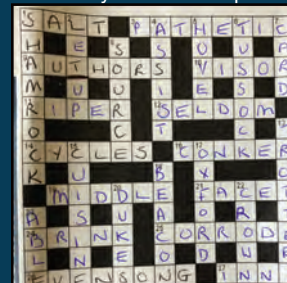


## Be in it to win it!

**REMINDER:** Please submit your completed crossword by the end of each month either by foot or by email to Lynne at Bishopstone Stores, who will drag a winning name from a hat if more than one of you is bright enough to complete it.

When you read your name in the next edition to say you've won, you can nip back to the shop to be presented with a nice shiny voucher for £10 off your bill at the pub or in the shop.

Email: [shop@helenbrowningorganic.co.uk](mailto:shop@helenbrowningorganic.co.uk)



October Solution from Paula!



**An Introduction to Mental Health Ecology**

with Anita Lawless  
BSc (Hons) Psychology & Counselling,  
EMCC accredited coach and trainer

**£10.00 PER PERSON**  
Including refreshments

**EARLY BOOKING ADVISED**  
Small groups only  
Numbers strictly limited

**DATES**  
2 PM, SUNDAY  
29 OCT 2023  
11:30 AM, TUESDAY  
7 NOV 2023

**Friendly group sessions**  
introducing and outlining  
methods used during my  
work to bring clarity, peace and  
more mental energy to your life,  
whatever your circumstances.

THE PEACOCK ROOM  
THE WILLOWS, CHALLOW MARSH, OX12 0ED  
What3Words//seemingly.brilliant.mistress

**BOOK**  
anita@mentalhealthecology.com  
07916 151 095  
mentalhealthecology.com

**Anita Lawless**  
Transformational Coach  
& Mental Health Trainer

EMCC Accredited  
Transformational Coach BSc (Hons)  
Psychology and Counselling

**FEELING SAD, STALE  
OR JUST STUCK?** Wanting change is the first step.

Overcome the mental obstacles that are constraining your life.  
Use our accomplishments to enhance the quality of your life.

**IMPROVE YOUR**  
✓ Decision making  
✓ Confidence  
✓ Empowerment  
✓ Personal relationships  
✓ Overall health & wellbeing

**ELIMINATE**  
✓ Stress  
✓ Anxiety  
✓ Exhaustion

**AUTUMN SPECIAL OFFER**  
6 x 1hr sessions  
only £300

As your coach I believe in your ability to grow, change, overcome and recover. I will empower and encourage you to develop optimal physical and mental health and sustainable personal change.

**GET IN TOUCH**  
anita@mentalhealthecology.com  
07916 151 095  
mentalhealthecology.com

Individually tailored sessions, helping you achieve a happy, fulfilled life, wherever you're starting from.

**Well Hung Framing**  
by Kate Herbert

I am Kate, your local bespoke picture framer.

I have a passion for framing and enjoy working collaboratively with my clients in selecting the best mounts and frames for all projects and budgets - from box framing, medals and memorabilia to paintings, prints and certificates. I also offer frame repairs and reglazing.

Please call, text or email to arrange a visit to my studio in Watchfield to discuss your requirements.

07710 348 263 bykateherbert@gmail.com  
wellhungframing  
wellhungframing.co

**Rachel Payne**  
Professional Hairdresser

**Established 25 years**

**Based in Bishopstone**

**Olaplex, Moroccan Oil & Schwarzkopf Treatments Available**

**For Appointments & Consultations**  
Contact 07527 607947

## The Gadgeteer



### Carving Boards

Time to dust off your carving boards, sharpening steel at the ready, knives out, best pinny and all that! Soon 'tis the season when we prepare for Christmas gatherings. Believe it or not, a decent carving board can make all the difference to your festive lunch. Wooden boards are available in abundance, made from fast growing Asian woods like Acacia (*Robinia pseudoacacia*) or Hevea known as Rubber wood. Boards like these can be readily picked up from the bottom shelf of the supermarket. Fairly inexpensive but not altogether glam if not updated regularly. Beech and oak are often the mid-level choice as they are often a little thicker, can be hard wearing and age beautifully, particularly in oak. As you go up the food chain of boards, end grain boards become a nice option. Here blocks of wood are glued together with the end grain facing uppermost to provide an intricate chequerboard effect but with the added advantage of strength. These boards are less likely to warp and do make a statement piece on a worktop. Meanwhile back to carving – if you are lucky, a basic Hevea or bamboo fibre board will have a juice groove or gravy groove to collect the lovely juices. Ideally one should select a board with a

deep groove or even central well to hold the joint. The very best in my opinion are the John Boos maple end grain boards from Effingham Illinois, or JK Adams Vermont Carvery Board – this one is also maple but with stainless steel spikes embedded at the centre to hold the joint or bird in place for carving. The ample juice groove channels juices whilst meats are rested so you can easily decant to the final reduction of gravy.



J Boos available from Harrods & JK Adams from Divertimenti London, Harts of Stur, Wedding List Company from £190.00



## Inside the Peach Pip

*Speaking in Tongues*, by Ella Frances Sanders

In the busyness of the past month, getting to grips with a new job and moving flats, I haven't been able to finish the novel I was intending to write about. Instead, I will take the opportunity to wholeheartedly recommend this fantastic coffee table (or toilet) book.

*Speaking in Tongues* is Sanders' second linguistic book. Some of you may have come across her debut publication, *Lost in Translation*, which collates a variety of words from different languages that have no direct translation in English (e.g. the Yiddish word 'shlimazel', meaning 'someone who seems to have nothing but bad luck'). In *Speaking in Tongues*, she instead collects sayings and colloquialisms from different languages, or 'curious expressions from around the world'.

What makes this an excellent coffee table book is the beautiful watercolour illustration of each expression on a double-page spread, with accompanying description of the phrase's origin and cultural usage. It's engaging on an aesthetic level, and an intellectual one if language interests

you, and is easy to dip in and out of. Any random page you turn to is bound to hold something of intrigue.

One of my favourite expressions in the book is the Italian phrase, 'avere grilli per la testa', which translates as 'to have a head full of crickets' - a head full of nonsense. I know that this will regularly come in handy as a description of myself.

Pip pip,  
Anna





# CHURCH NEWS

## A Letter From The Vicar

A colleague of mine has a rule that he won't start planning for Christmas until we have finished Remembrance Sunday. Well, I am writing this before Remembrance, and planning for Christmas is already well under way! There will be many "Christmas" services and you can see details of which service is happening when and where, but personally I am really looking forward to the season of Advent. This comes before Christmas and will be on us before we know it! I know we use our Advent calendars to count down to Christmas, but more properly Advent is a time of preparation. It's a chance to pause and to think about things, although for many of us it might seem like there's precious little time for that! But the point of Advent is to prepare ourselves for the arrival of Jesus, to get ourselves right so we can greet him and not want to hide away with feelings that we're not worthy.

Amidst all the activity of the season, with presents to buy, trees to decorate, parties to organize and lots of different services, I will be taking time to stop, to reflect and then when we get to Midnight Communion (my favourite service of the year), to make sure I'm not overwhelmed or exhausted but ready to sing "Yea, Lord, we greet thee, born this happy morning," and to really mean it. I pray that you will find time for reflection in all the busy-ness of this time of year.

Rev. Chris Hunter

### A Prayer for Advent

Almighty God,  
give us grace to cast away the works of darkness  
and to put on the armour of light,  
now in the time of this mortal life,  
in which your Son Jesus Christ came to us in great humility;  
that on the last day,  
when he shall come again in his glorious majesty  
to judge the living and the dead,  
we may rise to the life immortal;  
through him who is alive and reigns with you,  
in the unity of the Holy Spirit,  
one God, now and for ever.

**Church Services** in the Benefice  
full details on [www.achurchnearyou.com](http://www.achurchnearyou.com)

Day	Date	Time	Venue
Sun	19.11.23	10.30	St Mary's, Holy Communion
Sun	26.11.23	10.30	All Saints', Holy Communion
Sun	03.12.23	10.30	St Swithun's, Holy Communion
Sun	10.12.23	10.30	St Andrew's, Holy Communion
Sun	10.12.23	16.00	All Saints', Carol Service
Sun	17.12.23	10.30	St Mary's, Holy Communion
Sun	17.12.23	15.00	All Saints', Christingle
Sun	24.12.23	10.30	All Saints', Holy Communion
Sun	24.12.23	17.00	St Mary's, Christingle
Sun	24.12.23	23.30	St Andrew's, Midnight Mass
Mon	25.12.23	10.30	St Swithun's, Christmas Day
Sun	31.12.23	10.30	St Andrew's, Holy Communion

All dates and times are submitted to the Editor.



### Food for Thought

#### Mobile fish and chip van

Available for private parties,  
weddings and all functions.

Find us each month at Charlbury Stables

(See the diary in this publication for actual dates)

Post Code: SN4 0DW

Tel: 07515 288414

Email: [grahamrowcliffe58@outlook.com](mailto:grahamrowcliffe58@outlook.com)



**I LOVE YOUR GARDEN**

Facelifts by

**ON POINT PAVING**

Groundworks and Hard Landscaping

For a friendly professional estimate  
07748 799995  
[onpointpaving@yahoo.com](mailto:onpointpaving@yahoo.com)  
[www.onpoint-paving.co.uk](http://www.onpoint-paving.co.uk)

**Jane Pearson Design**

**10% DISCOUNT**  
for Bishopstone residents

**Gardens & Landscape**  
Local Landscape Architect & Garden Designer

**Design-Planting-Consultation**  
**Project Monitoring**

Creating joyful gardens & landscape infused with your personal style & requirements.

Let's make plans!  
+44 7811 367320  
[www.janepearsondesign.com](http://www.janepearsondesign.com)  
email  
[janepearsondesign@icloud.com](mailto:janepearsondesign@icloud.com)

Pre Registered Member of the SOCIETY OF GARDEN DESIGNERS

**THE OWL BARN**  
A MEMORABLE STAY IN HINTON PARVA

[theowlbarnwiltshire.co.uk](http://theowlbarnwiltshire.co.uk)

**Wanborough Bowls Club**  
Hooper's Field, Rotten Row, SN4 0AN

**Why give bowls a go?**

- It's a fun sport and good for your health
- You don't need any experience
- It's an opportunity to get outside in the fresh air in beautiful surroundings
- We are a friendly, social club
- There are lots of opportunities to play, friendlies and more competitive matches, both within the club and against other clubs.

You are welcome to come to visit, borrow our equipment and have a go with no commitment to join. Email or call the Hon. Secretary to arrange:  
[info@wanboroughbowlsclub.org.uk](mailto:info@wanboroughbowlsclub.org.uk) or 01793 614861

If you do decide to join us, adult membership is just £40 for the first year.

The green will open on Saturday 8th April (weather permitting) and then every day until the end of September. There's lots of parking on site.  
[wanboroughbowlsclub.org.uk](http://wanboroughbowlsclub.org.uk)



# The Parish Times

Bishopstone Parish Council, serving Bishopstone, Hinton Parva & Russley Park

November 2023

## ELECTIONS CHANGE TO SAVE ON COSTS

### Parish backs borough's proposals

Bishopstone parish councillors are supporting Swindon Borough Council (SBC) plans to harmonise elections.

The borough is to change its election cycle in 2026 to whole council elections once every four years.

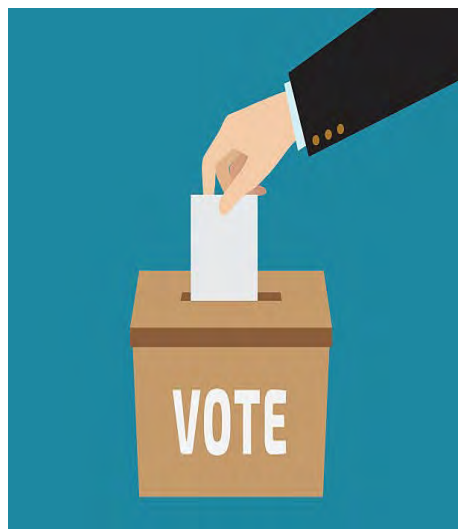
Parishes have been given the option to run their election cycle with the borough.

A combined poll alongside the borough council means costs would be shared between the borough and the parish, saving taxpayers money.

For Bishopstone, the current cost of a combined poll is £1,441, while a standalone election would cost £2,601.

Moving the next elections to 2026, to tie in with the borough, would therefore save £1,160.

Swindon Borough Council plans to increase the term of office for those parish and town councils currently scheduled to hold elections in 2024 to a five year term of office (2021-2026) and thus avoid an election in 2024.



The main additional benefits are the ease to the elector of having one local polling day, increased turnout that a combination of local polls affords and the ability to synchronise the strategic decision-making across the borough in respect of both the cycle of electing representatives and in reducing the impact of multiple pre-election periods.

## Refuse questions answered

Swindon Borough Council has given an update ahead of the roll-out of the new waste and recycling service that includes food waste collections and begins on Monday 27th November.

A mop-up process has been activated for households who have not received food caddies and blue weighted bags and blue weighted bags will be delivered to core libraries for those who require additional capacity. These will be free of charge and are available now.

The main questions SBC has received

are about the blue weighted bag. Residents are being encouraged to clean and crush contents, particularly plastic to increase capacity.

Excess recycling can be put out for collection as long as it is sorted correctly and is not bagged but placed in a sturdy container.

For more information visit [https://www.swindon.gov.uk/info/20015/bins\\_rubbish\\_and\\_recycling/138/recycling\\_guide/6](https://www.swindon.gov.uk/info/20015/bins_rubbish_and_recycling/138/recycling_guide/6)



## MATTERS ARISING

### PLEASE PARK RESPONSIBLY

The Village Hall car park in Bishopstone is a private space available only for those using the village hall.

It is not somewhere for parishioners to park on a long term basis, whatever the circumstances might be. This is clearly signed on the wall of the hall.

Cars parked here make it very difficult for legitimate hall users to find space for their vehicles. It is also incredibly inconvenient for those users having to load and unload items, or for the infirm or disabled who wish to make use of the hall. Provided the hall is not in use, loading and unloading of vehicles is permitted, as is visitor parking for short periods. By prior arrangement with the committee the siting of skips can also be accommodated. Hall users must come first and from the complaints received they are frequently finding it difficult to park.

Elsewhere, cars are being parked along some of the narrowest sections of road (e.g. Cues Lane in Bishopstone, High Street, Bishopstone) often blocking these routes to even small vehicles. Emergency vehicles need to be able to move freely down all the roads and lanes of the parish at all times. Please park responsibly and avoid the narrowest sections.

**PLEASE NOTE: All parish Council meetings will be held at Bishopstone Village Hall until further notice due to flood damage at the village hall in Hinton Parva**

## LOVE WHERE YOU LIVE

The Parish Council always extends a warm welcome to all new and prospective residents of the Parish and is happy to answer any queries they may have.

The Parish contains two conservation areas and everything south of the Icknield Way is also in the North Wessex Downs Area of Outstanding Natural Beauty. Many houses are also listed.

Naturally this brings with it all sorts of challenges when it comes to tree felling, house alterations, etc. There are also other regulations aimed at preserving the character and beauty of the parish. If in doubt, please check, we are only a phone call away. The Parish Council is always available to answer any questions you may have. Contact the Clerk, the Chair or any member of the council - the councillors email addresses appear below.

### BISHOPSTONE PARISH COUNCIL

**Ms Jaine Blackman (Clerk)**

Phone: 07913 819422

Email: Clerk@bishopstoneandhintonparva.org

**Mrs Val Brodin (Chair)**

Cllr.valbrodin@gmail.com

**Mr Ian Thomas (Vice Chair)**

Cllr.ianthomas@gmail.com

**Mr Julian Cooke**

Cllr.juliancooke@gmail.com

**Mr Nigel Crisp**

Cllr.crisp@gmail.com

**Mr Tom Green**

Cllr.tomgreen@gmail.com

**Mrs Gill May**

Cllr.gillmay@gmail.com

**Mrs Lucille McGrath**

Cllr.lucillemcgrath@gmail.com

**Mr Steve Bell**

Cllr.sbell@gmail.com

**Mr Gary Pass**

Cllr.garypass@gmail.com

**The Parish Council's policies and documents can be viewed at [bishopstoneandhintonparva.org/](http://bishopstoneandhintonparva.org/)**

### PARISH COUNCIL MEETINGS 2023/24

Meetings will be held at Bishopstone Village Hall until further notice due to flooding at Hinton Parva 4<sup>th</sup> December **Bishopstone**

**2024**

15<sup>th</sup> January **Bishopstone**

5<sup>th</sup> February **Bishopstone**

4<sup>th</sup> March **Hinton Parva (to be confirmed)**

1<sup>st</sup> April **Bishopstone**

Meetings begin at 7.30pm. Late changes are shown at [bishopstoneandhintonparva.org/parish\\_council/](http://bishopstoneandhintonparva.org/parish_council/) and on the notice boards. Members of the press and public are welcome to attend.

## Useful Information

**Swindon Borough Council: Reception Premier House 01793**

465055/465056; **Civic Offices 01793 463668; Wat Tyler House**

01793 463725

**For problems with waste collections call Streetsmart on:** Monday to Friday 8am-8pm 01793 445501; all other times 01793 466453

**Report fly-tipping or pot-holes to SBC:** [swindon.gov.uk/my\\_account](http://swindon.gov.uk/my_account)

**Wiltshire Police non-emergency number (less urgent than 999): 101**

**Borough Councillor Gary Sumner - GSumner2@swindon.gov.uk**

### PARISH COUNCILLORS' KEY RESPONSIBILITIES

**Finance** Nigel Crisp/Lucille McGrath

**Footpaths and Highways** Julian Cooke (Hinton Parva)/Ian Thomas (Bishopstone)

**Pond & Island** Steve Bell/Ian Thomas

**Hinton Parva Village Hall** Val Brodin

**Bishopstone Village Hall** Steve Bell

**Hinton Parva Charities** Peter Cooke (PC nominee)

**Bishopstone United Charities** Doug Stevens (PC nominee), Christine Thomas (PC nominee), Laurie Manktelow (PC nominee)

**Trees** Julian Cooke (Hinton Parva) Ian Thomas (Bishopstone)

**Responsible Financial Officer** Jaine Blackman (Clerk)

**Planning** Ian Thomas/Tom Green

**Website/IT** Nigel Crisp/Gary Pass

**Policies** Gill May

**School liaison** Lucille McGrath

### CURRENT PLANNING APPLICATIONS

All planning applications, their history and all supporting documents can be viewed at: [www.swindon.gov.uk/planning](http://www.swindon.gov.uk/planning) Planning issues are discussed at the monthly Parish Council meetings. Public representations are heard prior to the start of the meeting.

**S/23/0438** Outline Planning Application and variation of conditions 9, 10, 41, 42, 43, 46 and 47 from previous permission S/OUT/19/0582. At Lotmead site.

**S/HOU/23/1134** Erection of a single storey outbuilding for home office and storage purposes at 1 Little Hinton Farm Cottages, Little Hinton Lane, Hinton Parva.

**S/HOU/23/1274** Erection of a single storey rear extension with balcony above, 2no dormer windows and external staircase at Newhaven, Church Walk, Bishopstone.

**S/HOU/23/1211** Erection of single storey side and rear extensions at The Folly, Nell Hill, Bishopstone.

### PENDING DETERMINATION

**S/23/1069** Demolition of existing chalet, erection of 1no. dwelling (Class C3) at The Chalet, Church Row Hinton Parva.

**S/HOU/23/0391** Erection of a detached outbuilding/ home office at Hergest Ridge, Cues Lane, Bishopstone.

**S/23/0837** Change of use of land from agricultural to private equestrian (retrospective). at land at White Hill, Hinton Parva.

**S/23/0961** Erection of a Stable Building at Land To The North Of The Grove, Hinton Parva Lane, Hinton Parva.

**S/HOU/23/0958** Conversion of existing garage to a residential annex and erection of rear dormer window at The Old Inn, Bodyhorse Hill, Hinton Parva.



# Photo of the month

Thank you to Quentin Matthews for taking this lovely bug photo which was sent in by his wife Karen from their garden in West End Lane.

Look at all those amazing colours!

We've received more than ever this month and always try to use as many as possible throughout. Keep them coming everyone.

Achieve local fame with your photographic skills. The lucky winner will be chosen by the team each month. They will have their photo printed in full colour, right here, for the whole community to see.

**SEND US YOUR SNAPS**

Email:  
BishopstoneEditor@gmail.com



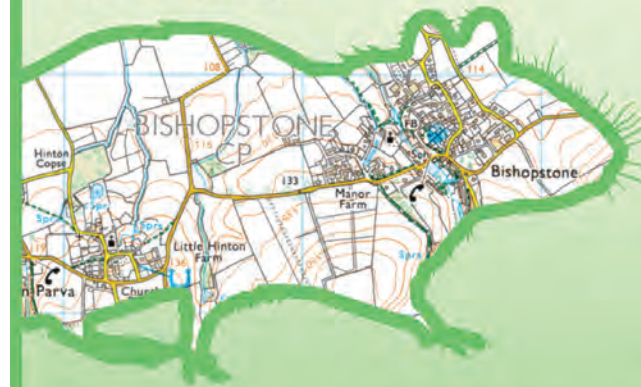
## 0800 7999682

**Shrivenham based taxi service**  
**Local, long distance, Air & sea ports**

**waylandprivatehire.co.uk**



We are a local business providing a professional and friendly service to commercial and domestic customers in Bishopstone and all surrounding villages.



Fully qualified - Insured - 30 years experience

10% discount off standard rates with this ad

Mobile - 07379 276187

Email - enquiries@enviropestcontroltd.co.uk  
www.enviropestcontroltd.co.uk

## BURSARIES FOR EDUCATIONAL EXPENSES

Little Hinton Educational Foundation offers bursaries to help young people in our parish with expenses related to their education.

If you are under 25, live in Hinton Parva or Bishopstone, and need help with the cost of books, travel, materials, equipment or other learning resources required for your academic, social or physical education, please get in touch.

We need to know your name, age, address, where and what you are studying, and what costs you could use some help with.

Please write to Mrs Valerie Brodin,  
The Coombs, Hinton Parva SN4 0DH



## SWINDON SKI & SNOWBOARD SERVICING

**WWW.SWINDONSKI.CO.UK**  
enquiries@swindonski.co.uk

Ian Thomas 07778 807783



## COME AND SUPPORT YOUR LOCAL CLUB

Why not join us at our next home game for some proper local football, great people and a good time!



RECREATION GROUND · SHRIVENHAM · SN6 8BJ



# VILLAGE hall news



## BISHOPSTONE

The Last Thursday in October saw the return of our City Lights film nights. Why not come for a drink and free popcorn – there's a licensed bar. November sees the classic 1973 *The Day of the Jackal*. We'd love to see you – bring a cushion if you miss your home comforts, but the heating works well these days so save your winter fuel bills and “come on down” the “price is right” with £5.00 entry. Meet with fellow villagers and watch a good film.

We have pencilled in a Village Hall Spring Clean, belated, for Saturday November 18th from 0900hrs. A village work party is needed to help with a general spruce up inside and out – reminder to follow on Community FB page or call Richard 01793 791913.

Our Xmas Elf on the Shelf is in the process of sourcing the village Xmas tree again this year. Let's hope it's still green and somewhat straight and that we don't have too much sprucing up to do .....

Meanwhile look out for Facebook or the Whats On listing for events open to all over the next few months. Please mark your diaries for Carols Around the Tree featuring our local maestro's with Bareham and Bareham from 5.30pm on 23rd December 2023. Bring lanterns and best singing voices FREE, FUN and FESTIVE!!

Richard Walker

## BISHOPSTONE ALLOTMENTS AVAILABLE

On behalf of the Church Commissioners and their land agent Strutt & Parker, several half allotment plots are now available to rent by the local community. A perfect opportunity to grow your own fruit and vegetables.

The price is £8 per half plot per year (April to March)

No permanent structures such as sheds are allowed but low level storage is permitted.

Although livestock cannot be kept, bee keeping is encouraged by the owners.

If you are interested in taking an allotment in Bishopstone,

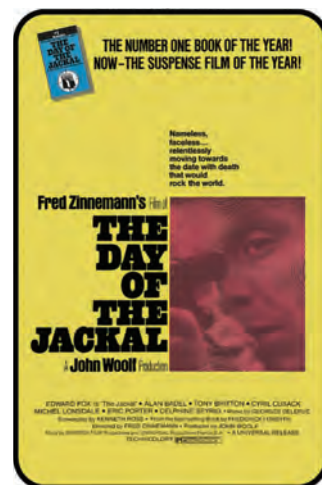
contact Steve Bell on 07598 185643



**THURSDAY 30TH NOVEMBER**  
Doors: 7pm film starts 7.40pm

**The Day of the Jackal.**  
(50th Anniversary) PG

Celebrating the 50th birthday of this classic thriller, based on Frederick Forsyth's novel. Edward Fox is The Jackal, hired by French army officers to assassinate President Charles de Gaulle as a protest to Algeria gaining independence from France. A beautifully made, tense, and thrilling piece of classic cinema. If you've never seen it you will be in for a treat, if you have, it's probably not been for a long time and to see it again on a big screen will take you back to just what a gem it is.



**THURSDAY 14TH DECEMBER**  
Doors: 7pm film starts 7.40pm

**Barbie.** 12a

(Wear something pink if you dare!)

Greta Gerwig's critically acclaimed and box office smash hit comes to the village hall! The owners of Barbie, Mattel, wanted a franchise movie celebrating all things pink of the famous iconic toy doll.... what they (and audiences) got was a movie layered with comedy, social commentary and songs to sing along to! \*\*\*\* The Telegraph \*\*\*\*\* The Independent



"Greta Gerwig delivers a nuanced commentary on what it means to be a woman in a whimsical, wonderful and laugh-out-loud funny romp. The entire cast shines, especially Margot Robbie and Ryan Gosling in roles they were clearly born to play." Variety



We've heard through the grapevine there is an appetite for a regular village Fitness Class or Pilates/Yoga class to be run in Bishopstone.

Should anyone be interested in setting up or running an event please contact: **Jo Homan: 07714 745 408**  
[jo@theorchardproject.org.uk](mailto:jo@theorchardproject.org.uk) for Village hall availability.

**VILLAGE HALL HIRE**

Both Bishopstone & Hinton Parva Village Halls have availability if you would like to hire either of them.

**BISHOPSTONE INFO/BOOKINGS:**  
Jo Homan: [jo@theorchardproject.org.uk](mailto:jo@theorchardproject.org.uk)  
Tel: 07714 745 408  
Hourly rate: £11 residents, £15 non-residents

**HINTON PARVA INFO/BOOKINGS:**  
Janet Hawkins: 01793 791391  
Email: [jaymaybee02@icloud.com](mailto:jaymaybee02@icloud.com)  
Hourly rate: £8 residents, £10 non-residents

**DUE TO FLOODING, WE ARE CURRENTLY NOT TAKING BOOKINGS FOR HINTON PARVA VILLAGE HALL**

## HINTON PARVA

## HINTON PARVA BRIDGE CLUB

New members always welcome  
Hinton Parva Village Hall  
**CURRENTLY CLOSED DUE TO FLOOD**  
**PLEASE CHECK FOR UPDATES**  
**WITH DALE OR JIM**  
**FRIDAY 7PM**

For more information, contact  
Dale and Jim Mitchell  
Email: [hintonbridge@hotmail.co.uk](mailto:hintonbridge@hotmail.co.uk)  
Tel: 01793 627301



The remarkable Kate Wright runs the Bishopstone School parents' fund raising suppers every month at The Burj, Foxhill. These suppers have so raised thousands of GBP for extra school excitement.

They take place on the second Monday of each month.

**Only £17 a head, starts 7.15pm for 7.30pm.**

Contact Kate at [katew@bishopstone.school.uk](mailto:katew@bishopstone.school.uk) if you'd like to take part/enjoy/help.



**SIN, SEX & THE C.I.A.**  
By Michael Parker and Susan Parker

**Directed by Belinda Nicholls**

Bishopstone Amateur Dramatics Society

## What could be better for a post-Christmas pick-me-up?

Bishopstone Amateur Dramatics Society is once again busy rehearsing to entertain you with a post-Christmas pick-me-up.

This year's production is "Sin, Sex & the C.I.A." by Michael Parker and Susan Parker, playwrights of the BADS 2013 favourite, *The Amorous Ambassador*. Sin, Sex & the C.I.A. is a fast-moving farce with a complex and hilarious plot full of double entendres, performed by your favourite local thespians, with some newbies to boot.

The set team are once again re-constructing Bishopstone Village Hall stage and scratching their heads as to how to manage those clever visual tricks to ensure the performance is seamless. The amazing Belinda Nicholls returns as director to ensure the performance is second to none and your diligent cast members are learning their lines on trains, planes, car journeys and dog walks!

**It will be a night out that promises hearty laughs and one that will lift those gloomy winter blues.**

Performances will run from Wednesday 10th to Saturday 13th January 2024. Bishopstone Village Hall doors and bar open at 7pm and curtain up at 7.30pm.

Tickets are £8.50 (Wed/Thurs, with £6 concessions) with all Fri/Sat tickets at £10.

To book your tickets call or pop into Helen Browning's Royal Oak (Tel. 01793 790481) and why not book a pre-theatre supper while you are there?

This amateur production of "Sin, Sex & the C.I.A." is presented by arrangement with Concord Theatricals Ltd. on behalf of Samuel French Ltd. [www.concordtheatricals.co.uk](http://www.concordtheatricals.co.uk).





## The Royal Woke Diary



After ticking every box and fulfilling every protocol in the SBC/fire safety/health and safety handbooks, three of the first five rockets (built according to strict EU/Fireworks/Brexit/Bishopstone paragraph 4, subsection 6 regulations) exploded in mid-air like most North Korean missile tests, and landed entertainingly at the feet of spectators enjoying a noisy pint on the Royal Oak deck, having just missed a surprised pigeon. Apart from that, our annual Guy Fawkes' bonfire party was a huge success, and thank you to the generous visitors and villagers who brought the good (and less good) fireworks. The last big banger entertained us for about 6 minutes, brought ooohs and aaaahs from the assembled masses, and one local was heard to comment that we'd moved up a notch from previous years and likened it, after 10 pints of Guinness, to something he'd once remembered in London on NYE. Ah yes, we've all been there. Thanks be to all of you again for putting up with us.

You'll also see from various well publicised articles that these premises have now been self-certified as an Official Anti-Brexit Establishment, which is bringing limited joy to more and more people. We are still happy to look after Brexiteers of course - I've always believed that the best way to get my own back on people whose views I'm not sure about is to continue to serve them. I just can't let it lie, can I?!

The next real excitement in these parts (as far as the pub is

concerned anyway) is sponsoring and selling tickets and pre theatre suppers for the village play in early January. It's a change from our normal highbrow productions (ha ha!), with a return to the always popular themes of inexplicable and accidental physical contact, and as much accompanying innuendo as possible. With a bit of slapstick thrown in. If the sideshow is a sex crazed (and thwarted) female spy, and her encounter with a preacher looking for any sign of sexual depravity - of which there is none - the main show is a light hearted romp with 100 per cent entertainment value. If we learn our lines well enough, of course. More details next month - tickets are available from the pub now. Sin, Sex and the C.I.A. runs at Bishopstone Village Hall from Jan 10 to Jan 13 2024. 2024! Where's this century gone?

Sadly I have to announce that our December/Christmas menus are now available for anyone interested - we love family gatherings here, in case you're at a loose end or bored of cooking and washing up. The hotel is open all Christmas and New Year if you don't want to see your relatives at breakfast. It seems a good option to me.

TF



@helenbrownsorganic

HELEN BROWNING'S

## Bishopstone & Hinton Parva WI

theWI  
INSPIRING WOMEN

Once again it's been a busy few weeks. Last month saw members celebrating the 69th birthday of your local WI. Members were greeted at the start of the evening with a glass of wine or fruit juice. This was followed by a Lebanese cookery demonstration, delivered by Wafaa Powell who is Lebanese. It was an interesting and entertaining demonstration and involved several members becoming 'hands on' and getting involved. The end result was a very nice salad with bulgar wheat and a yogurt dip.

Wafaa also shared lots of fascinating information about the Lebanon with many interesting historical and geographical facts.

After that Members were treated to slices of a delicious birthday cake and the evening concluded with everybody singing Happy Birthday.

Earlier this month it was Wiltshire Federation's Annual Meeting which this year was held at the Steam Museum..... very convenient for us. The speakers were the Chief Constable of Wiltshire Police, Catherine Roper and Baroness Floella Benjamin. The Chief Constable has been in post since February 2023 and her career has spanned many areas of policing including specialist crime, intelligence, professional standards and

crime prevention. Wiltshire police have 'Engaged Status' which necessitates extra inspections; clearer direction structures and frameworks with improvement plans.

Baroness Floella Benjamin gave a talk about her life with its many highlights and some extreme lows. She was born in Trinidad and Tobago and came to England in 1960. From appearing in 'Hair' (with her clothes firmly on) to Play School to the House of Lords she has had a very full life. She is an active advocate for the welfare, care and education of children through the world. She was made a member of the Order of Merit in 2022 and was chosen to carry the Sceptre with Dove at the Coronation of King Charles III.

New members are always welcome. If you are interested in joining please contact: [janatwan@icloud.com](mailto:janatwan@icloud.com)



Bonfire



Penny for the Guy  
Anna & Rachel buy Tim a drink



Preparations



## BARNES COACHES

01793 821303 | [BARNESCOACHES.CO.UK](http://BARNESCOACHES.CO.UK)

NEW 2023 Holiday Brochure OUT NOW!

Includes exciting new UK & European tours for 2023! Request your free brochure today.

### BARNES

2023 UK & European

Coach Holidays



FREE\* HOME PICKUP  
& DROP OFF SERVICE  
AVAILABLE ON HOLIDAYS  
4 DAYS & OVER!  
\*See our website for our  
free pickup area.

01793 821303  
[barnescoaches.co.uk](http://barnescoaches.co.uk)

Est.1986

# Chappells

ESTATE AGENTS

Sales • Lettings • New Homes

Specialists in village property for over 35 years.

Contact us now for your free valuation



01793 618080



[sales@chappells.uk.com](mailto:sales@chappells.uk.com)



[lettings@chappells.uk.com](mailto:lettings@chappells.uk.com)

rightmove





# MOWERFIXER

*maintenance/repair service  
mowers, hedgecutters  
strimmers etc.  
for the Ridgeway villages*

*New & 2<sup>nd</sup> hand  
garden machinery for sale*

**0789 979 1833**  
**doug@mowerfixer.co.uk**



*Local organic products delivered to your  
doorstep by 7:30am.*

*Milk, Butter, Yogurt, Cream, Eggs, Bread  
and much more!*



www.shop.10green.co.uk—01793 688834—admin@10green.co.uk



**A healthy and productive  
garden starts with healthy soil.**

Use Soil Improving  
Mulch from Apsley  
Farms this Spring!



- 100% sustainable
- A by-product of green energy
- Free from peat, weeds, pests & waste
- Suppresses weeds
- Rich in N, P and K nutrients
- Repels slugs and snails
- Locks in moisture
- Available in 730 litre bulk bags



**£90 SPECIAL OFFER!**  
**730L mulch bulk bag plus 10L  
Plant Food with FREE delivery\***  
Our Natural Plant Food is  
organically certified. Available  
in recycled 5L containers.  
\*central UK postcodes.

**sales@apsleyfarms.com**

**01264 554433**



## Pearce Funeral Services

**Papermakers House  
1 Rivenhall Road,  
Westlea, Swindon  
SN5 7BD.  
T. 01793 422 422.**



**92 Ermin Street,  
Stratton St Margaret,  
Swindon  
SN3 4NN.  
T. 01793 832 072.**

*Our family service caring for you*

- Family-run with compassionate service
- Prepaid funeral plans available
- 'Recommended' in the Good Funeral Guide
- Committed to the Fair Funeral Pledge

*"Outstanding is an understatement.  
These people are the ultimate in care and  
compassion. They understand the needs  
of the family."*

*Sept 2023 online review.*

**www.pearcefuneralservices.co.uk**



**Golden Charter**



**EDWARD BAYS Ltd**  
**PLUMBING & HEATING**

**01793 763790**  
**www.edwardbaysltd.co.uk**



## Bryn Llinos

A holiday cottage close to Beddgelert in the heart of Snowdonia

4\* Rated with 5\* Reviews

Excellent for beaches, mountains, walking, cycling and mountain biking

Heritage steam railway just 50 metres away at Nantmor Halt (Porthmadog to Caernarfon)

Discounts available for local residents to Bishopstone, please contact: brynllynos@yahoo.com

[www.holidaycottages.co.uk/cottage/64657-bryn-llinos](http://www.holidaycottages.co.uk/cottage/64657-bryn-llinos)



## HERITAGE TREE CARE

Professional Tree Surgeons

**Comprehensive Service  
Qualified Staff  
Fully Insured**

- ✓ Pruning and Shaping
- ✓ Felling and Removal
- ✓ Hedge Cutting
- ✓ Stump Grinding
- ✓ Tree Planting

Free quotations and advice  
Call Ian Walding (N.C.Hort / N.D. Arb)

**01793 790210**

Email: [ian@heritage-treecare.co.uk](mailto:ian@heritage-treecare.co.uk)  
[www.heritage-treecare.co.uk](http://www.heritage-treecare.co.uk)



## Watchfield Opticians

Opening hours:  
**9am – 5:30pm Monday to Friday**  
**9am – 1pm on Saturday**

Your local Opticians situated next to the Co-op in Watchfield.  
With parking available right outside and easy access.

- Full Eye Examination.
- OCT and OPTOMap scanning.
- NHS funded eye tests available for those eligible.
- Children's Eye Test.
- Contact Lenses.
- Hearing Tests and Ear Syringing.

Great choice of glasses and sunglasses to suit all tastes and pockets.



2 Majors Road, Watchfield, SN6 8TQ  
T: 01793 783848 E: [info@watchfieldopticians.com](mailto:info@watchfieldopticians.com)  
[www.watchfieldopticians.com](http://www.watchfieldopticians.com)



# WEBBS

## Builders Merchants

Established for 4 generations

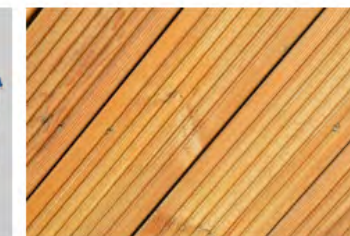
Well stocked, high quality products at competitive prices



Fencing



Garden Paint



Decking



Building Materials



Treated Timber



Custom Gates



Railway Sleepers



Hardware Shop

Friendly staff - always eager to help

Local delivery available



Open Monday to Friday 7:30am to 5pm, Saturday 8 am to 12 noon  
Please note we are not open on bank holidays

WEBBS, Southdown Farm, Faringdon Road, Longcot, Oxfordshire, SN7 7UA  
(please do not follow sat nav)

**01793 783 879**  
[sales@webbswood.co.uk](mailto:sales@webbswood.co.uk)  
[webbswood.co.uk](http://webbswood.co.uk)





**FIND US  
ONLINE**

www.bishopstoneandhintonparva.org

f /groups/bishopstoneandhintonparva

Send us your  
**DIARY DATES**  
Email:  
BishopstoneEditor  
@gmail.com

## General Information

### Contributions

If you'd like to write an article or submit any photography please email Andrea or Val for consideration in the next issue. We aim to distribute the newsletter on or around 15th of each month.

**DEADLINE for any considerations will be the last day of the previous month but we welcome submissions sooner.**

If you would like an advert designing for placement in the village news, please contact Andrea who offers a discounted rate for Village News adverts.

### We are non-profit!

The Village News is created and run by a small group of volunteers and is a non-profit organisation affiliated to Bishopstone Village Hall. Reg Charity no 271165.

If you would like to make a donation to help with the upkeep please contact Treasurer Andy P, or there are additional copies available and a donation box on the counter in Bishopstone Stores.

### Team

#### ADVERTISING:

**Graham Curley**  
graham.curley42@gmail.com

**Russell Hatch**  
russell\_hatch@ebamooba.co.uk

#### PUBLISHING EDITOR:

**Andrea Wadsworth**  
andrea@luli.uk

#### SUB-EDITOR:

**Val Brodin**  
valbrodin@gmail.com

#### CREATIVE COPY:

**Tim Finney**  
**Richard Walker**  
richardw@eddingtons.co.uk

#### TREASURER

**Andy P**  
andrewpocock@yahoo.co.uk

#### DISTRIBUTION:

**Christine Thomas**  
littlecot2010@hotmail.co.uk

**Doreen Cooper**  
01793 792 965

## Diary Nov/Dec 2023

2023	Time	Event	Place	Contact
<b>Nov</b>		Shrivenham Hub: Christmas Decoration Pop Up (pg 3)	56 High St. Shrivenham	sustainablesshrivenham@gmail.com
<b>15.11.23</b>	7pm	B&D Gardening Club: Jane Pearson Design Workshop 1	Bishopstone Village Hall	(see pg 5)
<b>17.11.23</b>	6.30pm	Christmas Card Making Workshop 12yrs+	Wantage Library	Free! Book: 01235 762291
<b>18.11.23</b>	9am	Wanborough Farmer's Market (3rd Saturday of every month)	Wanborough Village Hall	Lorna 07903 210 505
<b>18.11.23</b>	10.30-4.30pm	REME Museum Christmas Fair	Lyneham SN15 4XX	rememuseum.org.uk/ Pages/Events
<b>18.11.23</b>	11am - 3pm	Christmas at Castle Combe Village Market	Village Hall SN14 7HU	
<b>23.11.23</b>	6pm - 8pm	Bishopstone Christmas Craft Fair (pg. 3)	Bishopstone Village Hall	Chris Thomas 07789 414 147
<b>23.11.23 - 10.12.23</b>	Day dependant	Bath Christmas Market (see website)	Central Bath	bathchristmasmarket.co.uk
<b>25.11.23</b>	9am-2pm	Shrivenham Repair Hub	56 High St. Shrivenham	sustainablesshrivenham@gmail.com
<b>26.11.23</b>	10am - 3pm	EGLR Christmas Market	Shrivenham Memorial Hall	friends-of-eglr@outlook.com
<b>26.11.23</b>	7.30 - 9.30pm	Swindon Symphony Orchestra Concert: Symphony No.5 in E Minor Op.64	St Josephs Catholic College SN3 3LR	swindonsymphonyorchestra.org.uk
<b>30.11.23</b>	7pm	City Lights: The Day of the Jackal (pg.16)	Bishopstone Village Hall	Tickets: Royal Oak or on door
<b>Dec</b>		Shrivenham Hub: Children's Toys Pop Up	56 High St. Shrivenham	sustainablesshrivenham@gmail.com
<b>02.12.23</b>	10am -12pm	Wreath making class BYO Foliage (£10 p/p)	Bishopstone Village Hall	Chris Thomas 07789 414 147
<b>02.12.23</b>	3pm & 6pm	The Snowman: Wantage Silver Band	The Beacon Wantage	ticketsource.co.uk /wantage-band
<b>03.12.23</b>	1.30pm & 4pm	The Snowman: Wantage Silver Band	Amey Theatre Abingdon	ticketsource.co.uk /wantage-band
<b>13.12.23</b>	7pm	B&D Gardening Club: Jane Pearson Design Workshop 2	Bishopstone Village Hall	(see pg 5)
<b>13.12.23</b>	7pm	Carols by Candlelight: Julia's House Children's Hospice	Christ Church SN1 3HG	juliashouse.org/swindoncarols
<b>14.12.23</b>	7pm	City Lights: Barbie (pg.16)	Bishopstone Village Hall	Tickets: Royal Oak or on door
<b>16.12.23</b>	9am	Wanborough Farmer's Market (3rd Saturday of every month)	Wanborough Village Hall	Lorna 07903 210 505
<b>16.12.23</b>	12.00 - 4pm	Bourton Christmas Craft Fair	Bourton Club SN6 8HZ	@bourtonclub
<b>23.12.23</b>	5pm	Village Get Together & Christmas Sing Song (pg.15)	Hinton Parva 07866 837 247	karen.walker2701@gmail.com
<b>23.12.23</b>	5.30pm	Carols Around the Tree (pg.16)	Bishy Village Hall	
<b>10.01.24-13.01.24</b>		BADS Performance: Sin, Sex & The CIA	Bishopstone Village Hall	Book: Royal Oak 01793 790 481
<b>2nd Mon of month</b>	7.15pm	Bishopstone School parents' Fundraising Supper	The Burj, Foxhill	katew@bishopstone.school.uk
<b>2nd Thurs of month</b>	7pm Start 7.30pm	WI: Bishopstone & Hinton Parva WI	Bishopstone / Hinton Parva Village Hall	Jan Chapple janathompson@rd.co.uk

### Church Services - pg 10 Parish Council Meetings - pg 13

The views of individual writers expressed in this magazine do not necessarily reflect those of the editors, the parish council or the church. If you have any feedback or questions, please contact one of the editorial team listed to the left. Apologies for any stray typos. We try hard to catch them all but occasionally some escape. You may also deliver items by hand to Bishopstone Stores and Lynne will kindly pass anything on to us. Please make sure that you include any names and contact details so that we may get in touch with you. None of these personal details will be published unless we are specifically asked to do so.

Dates are correct to the best of our knowledge at time of going to print. Please see Facebook for any interim updates.

Tell us your thoughts!  
**'LETTERS TO  
THE EDITOR'**  
Email:  
BishopstoneEditor  
@gmail.com