



VILLAGENEWS

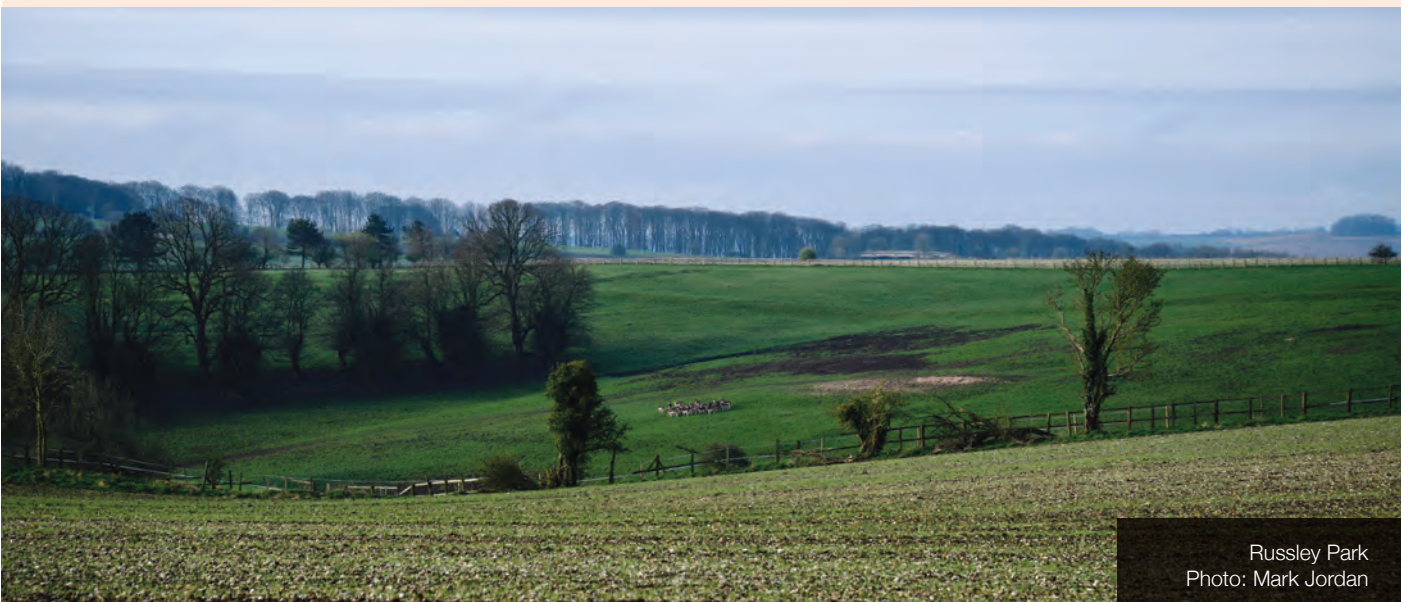
APRIL 2024



A Ridgeway cow posing in the sunshine

Spring is springing

Despite the recent downpours, the arrival of some beautiful sunshine is signaling the resurgence of life. This season holds a special place in most of our hearts. It's a vibrant spectacle with nature's colours suddenly appearing. Flowers unfurling, animals frolicking, and anticipation for summer mounts. The Royal Oak garden beckons with exciting events curated by Tim, including a car show, live music, and more to enjoy in the coming months. Seize the sunny days, for their tenure is uncertain. Pour a drink, fire up the barbecue, and revel in the simple joy of our picturesque locale. We certainly will be.



Russley Park
Photo: Mark Jordan

We are delighted to include our second piece, once again from Joey Jodhpur, a seasoned professional from Lambourn with a wealth of experience and close racing insight. Writing here under an alias, the quality of information is serious, sensitive, and second to none.

JOEY JODPHUR (JJ)

FROM DEEP IN THE VALLEY OF THE RACEHORSE

Following the drama and tweed of the Cheltenham Festival all thoughts in jump racing turn to Liverpool and Aintree racecourse next weekend, where young men can be locked up for wearing socks with their three piece suit, and ladies will strut their stuff in a distinct glow of 'Saint Tropez' orange (other brands of self tanning lotion do exist). For anyone who may have had one too many refreshments, the racecourse administrator does offer free flip flops to all those who fear their stilettos will unnecessarily be aerating the lush car park turf. Going good to soft.

The Grand National is the ultimate race that stops the nation; the Melbourne Cup, the once a year punter, the office sweepstake, the Sun pinsticker guide; everyone remembers their first National winnings. Time now to spare a thought for the jockey of 2004 winner Amberleigh House, Graham Lee, (our own columnists first Grand National winning memory) who finds himself in the longest of battles following a career ending fall at Newcastle last year, that had life changing consequences. Please head to thegoodracing.co to support the Graham Lee Racing Club if you would like to get into ownership, there could be no better start.

To the race itself what a spectacle it will be, and even though currently only 5 of the 34 runners are trained in Britain there are plenty of feel good stories lurking. None more so than Kitty's Light, should she get a run for welsh handler Christian Williams, whose daughter was recently diagnosed with leukaemia. Tom Ellis' Latenightpass will be ridden by his partner and leading amateur rider Gina Andrews, and Corach Rambler bidding of course to emulate the diminutive Tiger Roll as back to back winner.

Much has been made of the safety and welfare of our fabulous



equine participants, especially in light of last year's animal rights activist's disruption at the start of the race. But Aintree Racecourse and the British Horseracing Authority have left no stone unturned in their attempts to continue improving all aspects of the race for the horses. This year sees a raft of safety improvements being carried out including; reduction in the field size from 40 to 34, the repositioning of the first fence 60 yds closer to the start, and an increase in the minimum handicap rating of all participants, 130 from 125. Significant investment has also been made to the pop-up irrigation system to help the grounds team provide even better 'going' on the hallowed turf, though as we all know Mother Nature is doing her upmost to negate the need for any artificial irrigation.

It's a race like no other and brings goosebumps to even the most hardened of racing aficionados, as the 34 strong field negotiate 30 spruce-clad fences over 4 miles 2 1/2 furlongs. (Becher's Brook will probably resemble my Christmas tree on the 10th January!)

Joey Jodhpur's (JJ's) tips

(exclusively available to eagle eyed online subscribers of this newsletter)

Coko Beach - e/W

Meetingofthewaters - win

Mahler Mission - win

Bishopstone Stores

Who remembers April 2020? A very significant time in our lives and a time of 'firsts' - not only did the country go into its first ever lockdown but our lovely little shop opened its door for the very first time! Although, fortunately, the lockdowns are now over and done with, the village stores is here to stay and just keeps on growing! We always choose our products very carefully and are so proud that you are able to purchase produce from Eastbrook Farm. Our own, organic, pork and beef, vegetables grown here by the ever knowledgeable Prof Richardson, gin and blackcurrant Sylvan Spirit made with fruit from the pioneering Agroforestry Project (if you don't know much about it, why not join us for a guided tour on 18th May - book your place in the shop or the pub), apple juice from our own fruit and yours, and honey made by the lovely Bishopstone Bees! If that wasn't enough we also have plenty of organic groceries

and chilled goods to keep your cupboards well stocked, and an ever growing homeware and gift selection. Anything that we don't stock that you really think we should, please just let me know and I will absolutely endeavor to get it for you! Don't forget you can always pre order things too, either on a regular basis or just a one off.....

Very grateful are we to all of you lovely villagers that continue to use and support the shop, we really couldn't do it without you!

Thank you so much!

Lynne

N.B - we are now on summer opening times which means we are back and ready to serve you on Wednesdays, from 9-6.....see you soon

Opening Hours

Monday - Saturday 9am - 6pm

Sunday 9am - 3pm



@bishopstone_stores

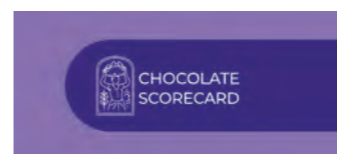
@helenbrowningsbishopstonestores

RECYCLING MATTERS



First, an update from last month, I can confirm that Marlborough's zero waste shop - 'Packaging Not Included' do sell UpCircle award-winning and sustainable skincare products and offer a refill service on some of them.

Talking of Marlborough, it has had 3 new 'preloved' shops open recently. 'WORN' describe themselves as selling a mixture of ladies designer, High Street and vintage clothes and accessories with a mixture of special occasion and everyday outfits. 'Bitsy', next door to them, sells household items. Both can be found in Old Hughenden Yard. They join 'Preloved', selling ladies designer and High Street brands of clothing and accessories, which is located on the High Street. Marlborough also has a number of charity shops including 2 for the Prospect Hospice - the boutique one specialising in high-quality and designer clothing. That seems to be a little bit of a theme in Marlborough.... And with 'Bertie Golightly' in Kingsbury Street concentrating on preloved occasion wear, perhaps pay a visit to Marlborough when you next want to refresh your wardrobe to see if you can do so more sustainably or find the perfect outfit for any events you have coming up at a fraction of the 'new' cost.



I'm a big chocolate fan and came across a website recently which other chocolate-lovers may find interesting - chocolatescorecard.com. They are independent and

produce an annual scorecard which is published each Easter which ranks and grades chocolate companies from around the world on key sustainability issues such as their use of child labour, deforestation, use of pesticides and paying their farmers a living income. What a horrible thought that your chocolate indulgence can negatively contribute to these world issues! Both Cadburys (which now comes under the Mondelez International global brand that also includes Toblerone and Green & Black's) and Lindt are both rated as 'Needs improvement' coming a disappointing 25th and 20th respectively out of the 38 brands which took part. The



Mars Wrigley group did better, coming 5th and is deemed to be 'Progressing'. But leading the way, across the board, is Tony's Choclonely should you wish to switch to a more sustainable treat. My personal favourite, Hotel Chocolat isn't included in the scorecard (yet?) but I found it very interesting reading the websites of the above companies. They all have a section on sustainability but they all paint a very different picture to how they've been scored on chocolatescorecard.com. I'm not sure if they're concentrating on the positive - as we all do from time-to-time - or there's an element of greenwashing going on?

Finally - if you take health supplements or vitamins, consider looking at the online company, VitaBrite. I have Rheumatoid Arthritis and take various supplements, with the approval of my rheumatologist, to help tackle inflammation. I recently stumbled across this company and from a customer as well as a sustainability perspective their credentials seem good. I like that they don't go overboard on unnecessary and wasteful packaging. For me they also compare very favourably from a cost perspective to Boots, Holland & Barrett and HealthSpan. Win, win! They appear on various cashback and voucher sites but also have a referral scheme, which would give a new customer a £5 discount. Do get in touch - via the Editor or Facebook messenger if you're interested and I'll send you the details. If you make a purchase I'm happy to donate the £5 that I should receive to the charity of your choice.

Karen Walker



Jane Pearson Design

Gardens & Landscape

Local Landscape Architect & Garden Designer

Design-Planting-Consultation
Project Monitoring

Creating joyful gardens & landscape infused with your personal style & requirements.

Let's make plans!
+44 7811 367320
www.janepearsondesign.com
email
janepearsondesign@icloud.com

Pre Registered Member of the SOCIETY OF GARDEN DESIGNERS

Happy Gardens

by Jane Pearson



MONTHLY MUSINGS

At last spring is with us and it's time to enjoy the long-awaited spring sunshine. I yearn for great bunches of fresh herbs, to use in salads and drinks, to flavour food and to simply enjoy their form and scent and flowers.

Herbs are wonderfully easy to grow, even when you don't have the room or inclination to grow vegetables, they pack a punch and make you feel accomplished!

There's a herb for every aspect and soil type. In her book "A hundred herbs to grow", Jekka McVicar sums them up nicely "They look good, smell good, taste good and they do the planet good, too". Rather than a single herb growing spot, I like to have pots on my kitchen windowsill, grow them in mixed borders, use them as edging and ground cover and best of all, our pollinating insects and bees love them.

GROWING HINTS AND TIPS

- Most herbs will tolerate a pH between 6.5-7.5, which is fairly neutral, although sorrel will tolerate an acid soil.
- Check how high your chosen plants will grow! Angelica can reach 2.5 meters and mint could take over a window box in a season. So, look at the spread and height of your chosen plants before planting.
- Check their preferred position: Mediterranean herbs like a warm sunny spot and Parsley flourishes in cool shade.
- Plant herbs together that like the same conditions.
- Combine perennials (Chives, Fennel, Mint, Sage, Tarragon, and Thyme, with Evergreens: Rosemary, Lavender, Thyme and use Annuals such as Basil, coriander, borage, sweet marjoram, and dill as great in fillers until the perennials grow through.



THE POTTING SHED

THINGS TO DO IN FEBRUARY & EARLY MARCH

- Sow hardy annuals, herbs and wildflower seed outdoors..
- Keep weeds under control, to stop them smothering young plants.
- Start to feed citrus plants.
- Increase the water given to houseplants
- Plant new pond plants and divide waterlilies.
- Sow new lawns or repair bare patches.
- Prune fig trees.
- Divide bamboos.
- Last chance to prune climbing and rambling roses.

Happy Gardening!

PLANT SPOTLIGHT: 6 of my favourite herbs



Basil (*Ocimum basilicum*)
Height 45 cm Spread 30 cm.
Grow indoors on a sunny windowsill or outdoors in a sheltered, sunny position. It's a herb that has the loveliest of smells but some people find difficult to grow. McVicar suggests growing it in a container as it likes to be pot bound. Always pick from the top and not from the sides and never water in the evening but always in the mornings (because if the plant is wet when the evening temperature drops it will sulk!)



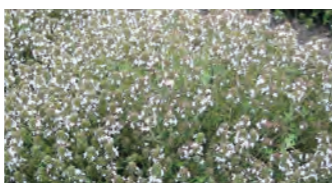
French tarragon (*Artemisia dracunculus*)
height 90cm, Spread 45 cm.
Nothing beats the fresh flavour of tarragon with its aromatic, anise flavoured leaves. Buy young plants or raise from cuttings, not from seed (that's Russian Tarragon). It will die down in winter but with a good mulch will reappear the following spring. It loves well drained soils in a sunny position. Flavour vinegar with the leaves for dressings and sauces.



Dill (*Anethum graveolens*)
Height 1.5. Spread 20cm.
Dill is a self-seeding Annual. It loves a well-drained soil and a sunny aspect, sheltered from strong winds. Plant it early and it will reward you with beautiful golden flowers and later seeds to make soothing tea with – it eases indigestion and is rich in vitamins A and C.



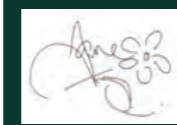
Mint (*Mentha*)
Height 60cm. Spread: Indefinite!
There are many varieties of mint, so experiment and find your favourites. They are all invasive and it's worth planting in separate containers rather than the ground. Unless you want to use it as ground cover. It is said that if the roots of different varieties touch, they will begin to taste the same, though I haven't found any research to substantiate this. Yet!



Orange-scented thyme (*Thymus 'Fragrantissimus'*)
Head 30cm. Spread 45cm.
All Thyme varieties are lovely but this is a personal favourite, the spicy orange flavour is great in rice and vegetable dishes. Carpet varieties are wonderful ground cover and edging a path they give a beautiful scent when stepped on. It is said that bees and other pollinators will go to Thyme and Oregano to heal themselves; that thought makes me smile.



Rosemary (*Salvia Rosmarinus*)
Height and Spread 1m.
A wonderful evergreen shrubby herb that flowers through the spring and summer. Bees love it and it smells wonderful. Some varieties make lovely low hedges and edges. To keep your plant from going woody, it's best to prune straight after flowering each year and always cut into 'green' not the hard wood.



07811 367320
janepearsondesign@icloud.com
The Lynchetts, Icknield Way, Bishopstone
www.janepearsondesign.com/hints&tips

Please visit my website at janepearsondesign.com/blog for Readers Question Time and much more!
www.janepearsondesign.com/blog

Bishopstone & District Gardening Club

Contact: Marion Peck: 01793 791 001

Our March meeting saw an excellent turnout for Rebecca Brain and her talk on 'Propagating Plants'. Rebecca was RHS trained and has worked in several different establishments, commercial growers and gardens. She is not only involved in the local charity "Root and Branch" which, through horticulture, provides some essential therapy for people with mental health issues but also with Bishopstone Village School, helping the children with their garden project.

Although a very versatile gardener her particular passion is propagation, including growing from seed and all methods of taking cuttings from mature plants for sale at her SOIL SONG PLANT NURSERY in Bishopstone where she now lives.

Rebecca showed us the techniques for sewing seeds in either modules or trays, using eco friendly composts and reusing pots, emphasizing the need to read and follow the information on the packets regarding time to sow, depth and conditions to ensure maximum germination.

She then demonstrated how to take cuttings and the best time to do so. Basal cuttings, a small piece cut from the parent with a shoot and section of the crown, removing all but a couple of leaves and dibbing into a pot. Soft, Hardwood and Heel cuttings are non flowering shoots cut between the nodes and again stripped of most leaves and any large foliage trimmed.

It was a very informative and enjoyable evening encouraging us all to try taking cuttings to rejuvenate and increase the plants in our gardens and to share with others.



DIARY DATES:

Wednesday May 8th : 7pm in Bishopstone Village Hall : Adam Alexander - The Seed Detective, will be joining us with a talk entitled 'Meetings with Remarkable Vegetables - from Wild Parent to Cultivated Offspring'.

Adam is an expert vegetable grower and has travelled the world to discover remarkable vegetables that we can grow here. He saves the seeds and has over 500 varieties in his own library.

He has had a passion for growing fruit and vegetables since childhood and has developed an interest in the social and cultural relationships with what we grow and eat. As well as his worldwide travels he is a gardener, writer, broadcaster and documentary film maker.

This will be an evening not to be missed especially for all those of you who enjoy growing and eating vegetables!

ANNUAL PLANT SALE

Saturday May 11th: Doors open 9.30 to 11.00 in Bishopstone Village Hall.

Time to start looking out for and potting up any spare plants and seedlings for the sale which is always an extremely popular event and important fund raiser for the club, so come promptly to secure the bargains of your choice!. Contributions can be brought to the hall from 8.00am, fully labelled please!

Wednesday 12th June : 7pm in Bishopstone Village Hall : Lyn Blythe - Medical Herbalist.

Lyn is a qualified Medical Herbalist with 30 years experience in healthcare. She has clinics in both Swindon and Melksham here in Wiltshire.

Her talk is entitled 'Herbal Remedies from Your Garden' and it promises to be an interesting evening as Lyn enlightens us of the Therapeutic and Healing properties of the plants in our gardens.

She is a member of the National Institute of Medical Herbalists and the College of Practitioners of Phytotherapy,

MOWERFIXER

*maintenance/repair service
mowers, hedgecutters
strimmers etc.
for the Ridgeway villages*

*New & 2nd hand
garden machinery for sale*

0789 979 1833
doug@mowerfixer.co.uk

HERITAGE TREE CARE

Professional Tree Surgeons

**Comprehensive Service
Qualified Staff
Fully Insured**

- ✓ Pruning and Shaping
- ✓ Felling and Removal
- ✓ Hedge Cutting
- ✓ Stump Grinding
- ✓ Tree Planting

Free quotations and advice
Call Ian Walding (N.C.Hort/N.D.Arb)

01793 790210

Email: ian@heritage-treecare.co.uk
www.heritage-treecare.co.uk




Enviro PEST CONTROL

We are a local business providing a professional and friendly service to commercial and domestic customers in Bishopstone and all surrounding villages.



Fully qualified - Insured - 30 years experience
10% discount off standard rates with this ad

Mobile - 07379 276187
Email - enquiries@enviropestcontroltd.co.uk
www.enviropestcontroltd.co.uk

WWW.BLOOMFIELDSFINEFOOD.CO.UK

Award winning
**DELICATESSEN
COFFEE SHOP
& FOOD TO GO**

Best in Local, Regional and International Food Since 2006!

OPEN DAILY
EAT-IN AND TAKEAWAY
DELICIOUS, HOMEMADE
FOOD. BREAKFASTS, LUNCHES
MEALS. COFFEE & TEAS,
SANDWICHES & BAGUETTES,
SALADS, SAVOURIES, SOUPS,
PLUS LOTS MORE...

Hamper Making Service

Outside Catering

ARTISAN CHEESES · OLIVES
FRESH BREAD · PRESERVES
PIES · DAIRY · SAUSAGES
DOUGHNUTS · LOCAL ALE
HOMEMADE CAKES · FRUIT
& VEG · CIDER, WINE & GIN

And lots more...

SHOP
OPENING TIMES
WEEKDAYS
8 - 4pm
SATURDAY
8 - 3PM

SHOPS 8 HIGH STREET, HIGHWORTH T: 7868999
33 HIGH STREET, SHRIVENHAM T: 7839999

FOOD TO GO PRICELIST ONLINE AT WWW.BLOOMFIELDSFINEFOOD.CO.UK

LOVE YOUR GARDEN

Facelifts by

ON POINT PAVING

Groundworks and Hard Landscaping

For a friendly professional estimate
07748 799995
onpointpaving@yahoo.com
www.onpoint-paving.co.uk




Inside the Peach Pip

Give Children the Vote: On Democratizing Democracy, by John Wall

I have long held the belief that children deserve the vote. Their lack of suffrage is one of the most significant ways in which they are marginalised, and their marginalisation is, in my view, a great unaddressed injustice in our society. When I have expressed this view to others, however, I have largely been met with incredulity. I was eager to learn whether anyone else shared my outlook, and in my search stumbled upon John Wall's book.

I was comforted to find many of Wall's arguments similar to my own, but more thoroughly researched. He continually compares children's lack of suffrage to that of other previously disenfranchised groups, most prominently women. Many of the objections people pose to children's suffrage today, he argues - e.g. not possessing sufficient political knowledge, not having the capacity to think critically, or being too easily influenced - were all arguments previously used to deny women the vote. Since achieving women's suffrage, however, we have come societally to accept their equal political capability. Why, then, do we continue to assume the incompetence of a third of our citizens without trial?

Why, also, do we hold children to standards that no adult is held to? No competence or knowledge is required of

adults. Any over-18-year-old (or over-16 in Scotland) can wander into a polling station on election day without even knowing who the candidates are, and put a cross in a box. That is their right. A 90-year-old with dementia who thinks Thatcher is still in office can cast a vote if they choose, but a 12-year-old political activist cannot. If a competency test were implemented universally, I am sure many children would gain eligibility to vote and many adults would not. Wall argues that suffrage shouldn't need to be earned by any group, as the core of democracy is giving everyone a say without restriction. To deny children, or anyone else, the right to vote on competency grounds is fundamentally undemocratic.

Wall proposes a proxy-claim vote for everyone from birth. When a child is too young to claim their vote, they still deserve representation, therefore a nominated adult (usually a parent/guardian) could vote on their behalf. The proxy vote could also be used for adults who are unable to vote. As soon as a person wishes to claim their vote, the very fact of their claiming it demonstrates sufficient competence to vote on their own behalf. For some, this could be as young as aged 4.

I haven't gone into the half of it here, and don't have space to, so if this topic interests you and you have questions about how this might work in practice, you should really read this book. It is radical, but incredibly convincing. I hope it will challenge your views on what children are and could be capable of.

Flinging love, Anna



APRIL PUZZLE win a £10 voucher

This month, Fleur pulled **Pete Walker** from the hat! Other entries were Gary Pass, Paula Bartlett, Julie and Sue Dent, 1st time crossworder! Well done to you all. Keep them coming!

Across

- 1 Bengal is strange for some Europeans (8)
- 6 Part of circle of a Roman Catholic (3)
- 9 One of the musketeers has to reform (5)
- 10 Be like Norman William, sounding like a nut (7)
- 11 Continue to make jeering remarks in a West Country town (7)
- 13 Change people appearing in advertisement (5)
- 14 Delay upsetting trader (6)
- 15 Nuts obsess chiefs (6)
- 19 Legendary golden sovereign (5)
- 21 Italian city designed for romance? (7)
- 22 Work around spilt rum, causing great agitation (7)
- 23 State I mean to change (5)
- 24 Fish providing light (3)
- 25 Writer, for example, in building sites (8)

Down

- 2 Fatigue with traffic fumes (7)
- 3 Fuel used for heating a stove (3)
- 4 Rise as note reaches finale (6)
- 5 Spa region, resort in a foreign country (9)
- 6 A quaintly pleasing French accent? (5)
- 7 Mangy hound Edward healed (5)
- 8 Formidable person seen with a couple of sailors (6)
- 12 A wading bird deflects sound (9)
- 16 Accounts signed initially by politicians (7)
- 17 He's sad, possibly, in sunglasses (6)
- 18 Musicians play them for Prunella (6)
- 19 Mother is the one who wins a game of chess (5)
- 20 Hat worn in town? (5)
- 23 Blossom for a girl (3)
17. Ronald gets installed in the royal seat (6)
19. A short letter of distinction (4)
21. Employed some famous editors (4)

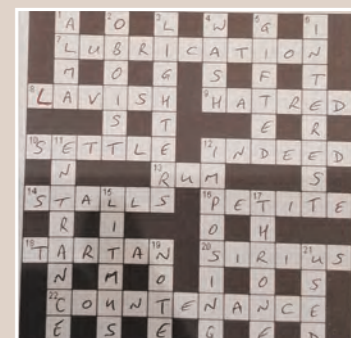
OUR MARCH WINNER IS Pete Walker
Well done! Please collect your voucher from Lynne at the pub shop.

	1	2	3		4		5		6		7
8											
9					10						
11				12			13				
14							15		16		17
						18					
19		20				21					
22									23		
24				25							

Be in it to win it!

REMINDER: Please submit your completed crossword by the end of each month, in person or by email to Lynne at Bishopstone Stores. Winning name will be drawn from a hat. The winner will be published in the next edition, following which, you can collect your voucher from the shop. This gives you £10 off your bill at the pub or in the shop.

E: shop@helenbrowningorganic.co.uk



March Solution from Pete Walker.

DICKIE'S diary

by Richard Green



We hoped for a dry March but that failed. It keeps raining which is holding up work on the farm. I heard the first chaff-chaff on Sunday March 17th. Hedges are greening up nearly a month early. The marsh marigolds (kingcups) that Danny Finch allowed me to transplant from his large bed in the dingle to our pond in the vale are blooming well.

This month I will concentrate on deer and squirrels. With DEFRA incentivising the planting of more woodland and hedges as part of environmental policies aimed at cutting carbon, the Government is rightly concerned that these two marauding species will predate and fraught the delivery of this policy. The imported grey squirrels damage deciduous trees by debarking the leading branch causing serious stunting. I may have mentioned before that in the 1950's Harold Macmillan was serving in Winston Churchill's cabinet with responsibility for forestry which needed promoting after the war. He arranged for the MAFF (ministry of fisheries and food and forerunner of defra) to pay I think a shilling (5p) for each squirrel tail. My brother and I saw two squirrels enter a hole on a dead tree. We set fire to this small tree and managed to shoot six as the smoke forced them out. The tails were boxed up and sent to Oxford! Some call them tree rats but as nut eaters I am prepared to eat a squirrel. Defra's latest policy will aim to promote a squirrel feed additive with gene editing that will mean birth of only one sex to prevent breeding as a control of numbers. The feeders would only be accessible to greys so if successful this policy might allow the native red squirrels to expand from their small existing territories. Their numbers have fallen from 3.5 million to a few hundred thousand.

The escalating numbers in the deer population is obvious

in this neck of the woods. It is lovely to see them but there are too many especially fallow and muntjac. Only yesterday I saw twelve fallow bucks, well antlered, down in the vale on our Zulu farm in these numbers there for the first time. I rang a friend and he shot two enormous beasts that evening. Defra reports that the deer population is the highest for a 1,000 years and fertility control is not possible. Some are advocating the reintroduction of wolves to reduce numbers but they would also take sheep. Culling by rifle remains the only option. Venison has been called Britain's most sustainable meat but the market needs further incentives to develop, particularly in the south. Government plans to use more venison in hospitals, army barracks and in the prisons and maybe into food banks. Venison needs to be cheaper in the supermarkets. Muntjac are also a problem. They can breed all the year round and they know the bark and kill trees at ground level.



International Pig Racing Day

13th Annual. Originally Pig Racing for the Queen on Her Majesty's Diamond Jubilee 2012 and more recently 'Pig Racing for the King'

Sunday 2nd June 2024

Road Closure Notice - Cues Lane, Bishopstone.

An application has been made for the usual short-term road closure according to the Town Police clauses Act 1847.

The registered Charities to benefit from this year's event include The Swindon and North Wiltshire Deaf Children's Society, The Village Hall, The Village News and Prospect Hospice.

The Gadgeteer

Our Daily Bread

You won't be surprised to learn there is a micro industry, based around homemade bread making. To support this there is an angelic host (keeping with the theme) of mainly traditional gadgets to enhance the home baking experience. Start with a Grain Mill to mill your own flour. Then a glass Kilner style jar to create the mother yeast for sourdough. Flour scoops and measures are most useful to accurately weigh out ingredients. The Danish whisk has a strong steel loop affair to help manually combine ingredients with the flour. Then move to proving with a Pyrex bowl or Anchor Hocking soda lime glass mixing bowl, these are ideal. Take a Banneton – these are usually made from rattan and the perfect shape for proving dough, covered with a linen tea towel it nurtures the dough helping with pre shaping. There are then Lathes to cut slashes or patterns before baking. Lastly the Ultimate machine for home baking is the Ankarsrum Bread maker. A household name in Sweden, this prepares dough like a commercial bakery but with a handmade feel, unfortunately the sin is the price tag to match **SRP 695.00** but I'm told it makes the best dough ever, Amen.

Ten Commandments of bread making

- Stick with one dough formula when you first start out. Figuring out when dough is ready to move onto the next stage of development, and ultimately when it's properly proofed and ready to bake, can be difficult. Each dough has a slightly different feel to it, so jumping between formulas early on can make this extra challenging.
- Feed your starter. It's frustrating trying to leaven a loaf without a lively, active starter. You can tell when your starter is ready to use if it easily floats in a glass of water. This means there is enough CO2 to leaven your loaf.
- Not all flour is created equal. For flavour, hydration, and nutrition, 100% whole grain flour is perfect, all the fibre, mineral and vitamin potential is harnessed within the grain. But if you want a lighter, whiter loaf, choose a sifted flour, where the bran or some of the bran is sifted out, but the grain's germ remains. The germ holds the mineral and vitamin content of the grain. It's often removed in non-organic flour to extend its shelf life.
- Think about how your flour is grown and stored. Use organically grown flour, where no chemicals are used in growing and storing the grain before milling.
- Choose a stone milled flour where possible. This low temperature, small batch way of milling helps maintain the nutritional value of flour in its original proportions.
- Autolyse. This is a resting period of approximately 20-40 minutes where the combined flour and water starts to build gluten structure. This is a very helpful step to gently develop structure within dough.
- Take it easy on the mixing. Over mixing dough will reduce your loaf's flavour and toughen the result. At home, you can easily develop gluten within your dough with a few sets of stretching and folding in a bowl every 30 minutes or so during bulk fermentation. There's no need to slap or knead bread to get the structure.
- Divide and pre-shape. This will give you evenly sized loaves and start bringing the dough into its final shape. Shaping will give your loaf the final form and shape you want.
- Retarding the dough in the fridge overnight will bring out more acidity in your loaf and also helps develop that lovely chewy sourdough texture. It slows down and extends fermentation, allowing time for additional sugars within



Ankarsrum Bread Maker

the grain to be digested by the wild yeast and further break the gluten down to amino acids. It's also a useful tool in scheduling bread making, so you can wake up and bake a loaf in the morning.

- Score your loaf to control how it expands, then bake with steam. Steam allows the crust to stay soft for the first third or half of the bake, enabling your loaf to rise to its full potential before the crust starts to harden off. Remove the steam for the second part of the bake to form a nice thin crispy crust.



Danish Whisk

CHURCH NEWS



A Letter From The Vicar

Dear Friends,

It was a joy to share a stunning walk of the Stations of the Cross up onto the Ridgeway at Bishopstone on Good Friday with a group of us and to celebrate with so many in Church on Easter Sunday.

At the heart of the good news of Easter is that we can know the forgiveness of God for our failings because of Christ's sacrificial death in our place on the cross. But along with this glorious promise of free and full forgiveness of our wrong thoughts and actions, comes the very challenging calling to forgive others, when they wrong us; and forgiveness is tough!

The act of forgiveness is one of the hardest things we ever have to do if we have been deeply hurt by the actions or words of someone else. It's always painful and it's always personal. We so desperately want justice and to get even. However, God calls us to forgive, even in those circumstances.

First, because only he can administer true justice, for only he knows all; the whole picture. Secondly, because only he is without sin and can make a true judgement about the offence committed. Thirdly, because only he has given his life so that we could be forgiven our sins, which justly deserve his judgement. So, on all counts we are not in a position to pass judgement on another person. A useful saying of Jesus is 'judge not, that you be not judged.' But fourthly, he calls us to forgive because he loves us. If we do not forgive, bitterness can eat out the goodness of our inner selves. Personal bitterness can consume us and our joy of living and even bring physical illness to us. Jesus calls us to forgive those who wrong us and says that we cannot fully receive the forgiveness of God unless we are at least willing to try and extend that forgiveness to others. Of course, we need to rely on him for the strength and ability to do it. The new life of Easter grows strongly out of the soil of forgiveness. There is too little forgiveness and too many judges in our modern world. Let us not forget the discipline and grace of forgiveness as a transformative force in life and in the world.

Kind regards,

Revd, Steve Paynter

stevedpaynter@gmail.com (Corrected from last month)
01793 296870

Prayer

Lord, I seek Your forgiveness and healing. Help me to release the weight of guilt and shame that I carry. Grant me the strength to learn from my mistakes and to grow into a better person. May Your boundless love and grace wash over me, renewing my spirit and granting me the peace that comes from knowing I am forgiven. Lord, in your love and strength, enable me to forgive others who have wronged, or hurt me. Amen.



Church Services in the Benefice.
Full details on www.achurchnearyou.com

Day	Date	Time	Venue
Sun	14.04.24	10.30	St Mary's, Bishopstone
Sun	21.04.24	10.30	St Andrew's, Wanborough
Sun	28.04.04	10.30	St. Swithun's Hinton Parva
Sun	05.05.24	10.30	All Saint's, Lyddington
Sun	12.05.24	10.30	St Mary's, Bishopstone
Sun	19.05.24	10.30	Pentecost St Andrew's, Wanborough
Sun	26.05.24	10.30	Trinity Sunday St. Swithun's Hinton Parva
Sun	02.06.24	10.30	All Saint's, Lyddington

St Mary's Church Cleaning Rota 2024

Jan	Chris & Gill
Feb	Jane G & Maggie
March	Sarah & Jenny
April	Liz & Jane M
May	Rachel B & Caryn
June	Debbie & Rachel P
July	Jill & Karen MacG
August	Fran & Karen S
September	Chris & Gill
October	Jane G & Maggie
November	Sarah & Jenny
December	Liz & Jane M

Thank you to the great team who help clean the church. We would love to hear from new volunteers who'd like to join us. It involves no more than 4hrs cleaning during your month on the rota, so not too onerous!
Please contact Sarah Bally 07788715742

All dates and times are submitted to the Editor.

Stations of the Cross

Parishioners shared a beautiful tradition, walking up from St Mary's Church to the top of the Lynchets on Good Friday to commemorate the Stations of the Cross. Mostly in the sunshine, the journey, both physical and spiritual, must have been quite powerful, especially with parishioners from all four of the village churches coming together for this special occasion. They were even blessed with a rainbow.

Taking in the readings of the 14 stations along the way adds depth and reflection to the experience, allowing participants to contemplate the significance of each station and the journey of Jesus to his crucifixion.

The walk was concluded with a warm cup of tea and hot cross buns at the top of the Lynchets.

Traditions like these help to strengthen the bonds within a community and provide an opportunity for spiritual reflection and renewal. It's heartwarming to hear about such cherished traditions being upheld and shared amongst parishioners.



Village Churchyard Tidy-up

A group of 12 willing volunteers soaked up the beautiful weather on a recent Saturday morning, whilst working energetically to give St Mary's church yard a much needed spring clean.

Ancient gravestones and parts of the churchyard wall were cleared of ivy, drains and gutters around the church were cleared of winter debris and a new composting area was constructed to neatly gather grass mowings and spent flowers.

Huge thanks to all who pitched in and hopefully visitors to the churchyard will be pleased to see it all looking ready for the summer ahead.

Special thanks to the cake makers for keeping us going with delicious delights and hot drinks.

If anyone has any spare time the paths need a rake to pick up the dead leaves. Thank you.

Doug Stevens,
Churchwarden





COME AND SUPPORT YOUR LOCAL CLUB

Why not join us at our next home game for some proper local football, great people and a good time!



RECREATION GROUND SHRIVENHAM SN6 8BJ



OFFICER HELPS TO STOP THE SPEEDY

Enforcement sessions held in Hinton

Enforcement sessions have been held in Hinton Parva in a bid to stop speeding motorists.

One was carried out 18th March at Body Horse Hill.

"I met Tanner [pictured above with their rider], then sadly a motorist behind doing 40mph in a 30mph limit," said Officer Garcia of Wiltshire Police.

Another session was held on 25th March outside Hinton Parva Village Hall, when three vehicles were caught speeding and notices of intended prosecution for exceeding the limit have been issued.

The speed enforcement officer explained that depending on previous convictions and history the drivers will be offered a speed awareness course or face a £100 fine and three points on their li-

cences. "Proceedings will now be undertaken to ensure the most appropriate outcome for the offenders takes place, which includes checking for MOT, Insurance and Point Totters," said Officer Garcia.

"Captured footage will be analysed for other offences like seat belts and mobile phone use."

The roads monitored are 30 MPH and the fastest vehicle was captured at 39 MPH.

Can you offer an hour a month to help keep horses like Tanner safe? Join the parish Community Speed Watch team and help reduce traffic speeds in our community. Please contact cllr.lucillemcgrath@gmail.com for more information.

MATTERS ARISING

GET SET TO USE YOUR VOTES

Elections are being held for Swindon Borough Council wards and the Police and Crime Commissioner for the Wiltshire Police area on Thursday 2nd May.

Standing for the Ridgeway ward, which covers Bishopstone, Hinton Parva and Russley Park are sitting incumbent Gary Sumner (Conservative), Stephen Allsop (Labour) and Liz Mearns (Liberal Democrat).

Standing for the PCC role are Stanka Adamcova (Labour and Co-operative Party), Alan Hagger (Liberal Democrat), Mike Rees (Independent) and Philip Wilkinson (Conservative and Unionist Party).

A polling station will be open at Bishopstone Village Hall from 7am to 10pm on 2nd May. Residents now need to show an approved form of photo ID to vote. You can apply for a free voter ID document, known as a Voter Authority Certificate, if you don't have an accepted form of photo ID. Details at swindon.gov.uk.

FIBRE BROADBAND UPDATE

Openreach contractors have been busy in Hinton Parva trying to open the blocked ducts so the fibre can be pulled through. We'll update as and when we have more info.

20MPH ZONE SCHEME

A date hasn't yet been set for SBC's consultation on its proposed 20mph zone for Bishopstone. When the parish council is informed, it will publish info on noticeboards, Facebook, website and newsletter if there's time.

WELCOME TO THE PARISH

The Parish Council always extends a warm welcome to all new and prospective residents of the Parish.

We are very pleased that you've chosen to live in our community. The Parish contains two conservation areas and everything south of the Icknield Way is also in the North Wessex Downs Area of Outstanding Natural Beauty. Many houses are also listed.

Naturally this brings with it all sorts of challenges when it comes to tree felling, house alterations, etc. There are also other regulations aimed at preserving the character and beauty of the parish. If in doubt, please check, we are only a phone call away. The Parish Council is always available to answer any questions you may have on any particular aspect of living in a conservation area, the area of outstanding natural beauty or listed buildings.

Contact the Clerk, the Chair or any member of the council - the councillors email addresses appear below, along with the Clerk's telephone number.

BISHOPSTONE PARISH COUNCIL

Ms Jaine Blackman (Clerk)

Phone: 07913 819422

Email: Clerk@bishopstoneandhintonparva.org

Mrs Val Brodin (Chair)

Cllr.valbrodin@gmail.com

Mr Ian Thomas (Vice Chair)

Cllr.ianthomas@gmail.com

Mr Julian Cooke

Cllr.juliancooke@gmail.com

Mr Nigel Crisp

Cllr.crisp@gmail.com

Mrs Gill May

Cllr.gillmay@gmail.com

Mrs Lucille McGrath

Cllr.lucillemcgrath@gmail.com

Mr Steve Bell

Cllr.sbell@gmail.com

Mr Gary Pass

Cllr.garypass@gmail.com

Mrs Karen Walker

Cllr.karenwalker@gmail.com

The Parish Council's policies and documents can be viewed at bishopstoneandhintonparva.org/

PARISH COUNCIL MEETINGS 2024

Meetings will be held at Bishopstone Village Hall until further notice due to flooding at Hinton Parva 2024

13th May: Annual Parish Assembly at 7pm; followed by parish council meeting at 7.30pm

Bishopstone

Meetings begin at 7.30pm. Late changes are shown at bishopstoneandhintonparva.org/parish-council/ and on the notice boards. Members of the press and public are welcome to attend.

Useful Information

Swindon Borough Council: Reception Premier House 01793 465055/465056; **Civic Offices** 01793 463668; **Wat Tyler House** 01793 463725

For problems with waste collections call Streetsmart on: Monday to Friday 8am-8pm 01793 445501; all other times 01793 466453

Report fly-tipping or pot-holes to SBC: swindon.gov.uk/my-account
Wiltshire Police non-emergency number (less urgent than 999): 101
Borough Councillor Gary Sumner - GSumner2@swindon.gov.uk

PARISH COUNCILLORS' KEY RESPONSIBILITIES

Finance Nigel Crisp/Lucille McGrath

Footpaths and Highways Julian Cooke (Hinton Parva)/Ian Thomas (Bishopstone)

Pond & Island Steve Bell/Ian Thomas

Hinton Parva Village Hall Karen Walker

Bishopstone Village Hall Steve Bell

Hinton Parva Charities Peter Cooke (PC nominee)

Bishopstone United Charities Doug Stevens (PC nominee), Christine Thomas (PC nominee), Laurie Manktelow (PC nominee)

Trees Julian Cooke (Hinton Parva) Ian Thomas (Bishopstone)

Responsible Financial Officer Jaine Blackman (Clerk)

Planning Ian Thomas

Website/IT Nigel Crisp/Gary Pass

Policies Gill May

School liaison Lucille McGrath

CURRENT PLANNING APPLICATIONS

All planning applications, their history and all supporting documents can be viewed at: www.swindon.gov.uk/planning Planning issues are discussed at the monthly Parish Council meetings. Public representations are heard prior to the start of the meeting.

S/24/0242 Erection of a garage, a replacement timber barn to be used as ancillary accommodation to barn B, 2 no. single storey out-buildings and amendments to car parking arrangements and landscaping at West Hinton Farm, Hinton Parva Lane, Hinton Parva.

S/HOU/23/0764 Installation of solar panels at Old Post House, Nell Hill Bishopstone.

GRANTED

S/23/1482 Installation of solar panels at former that hovel, Oxon Place, Bishopstone.

S/HOU/23/0391 Erection of a detached outbuilding/ home office at Hergest Ridge, Cues Lane, Bishopstone.

S/HOU/23/1385 Erection of a tennis court with surround fencing and family swimming pool with retractable cover, stone paved surround and adjoining terrace at Hill Manor House, Hatchet Hill, Hinton Parva.

S/23/0837 Change of use of land from agricultural to private equestrian (retrospective) at land at White Hill, Hinton Parva.

REFUSED

S/23/0190 Change of use from agricultural to residential land and erection of 1 no. dwelling (class C3) with detached garage at land adjacent to Westhill House, Hinton Parva.



Photos of the month

SEND US YOUR SNAPS
 Email: BishopstoneEditor@gmail.com



Bishopstone School has been hosting a photography club for the past few weeks, and this month, we're delighted to showcase a couple of charming photos captured by two of our talented students. The first features the school and pond, skillfully taken by Millie Pocock, while the second showcases the school, beautifully captured by Scarlett Morris, both aged 9.

Congratulations on capturing these gorgeous images of our village, and thank you for generously sharing them with us. We eagerly anticipate seeing more of your photography in the future!

Become the neighborhood paparazzi sensation with your camera wizardry! Every month, our crack team of discerning judges will don their imaginary monocles and select a lucky winner. Brace yourself for stardom, as your masterpiece gets the full-colour treatment and becomes the talk of the town. It's not just a photo, it's your ticket to local fame!

Anita Lawless
 Transformational Coach & Mental Health Trainer

EMCC Accredited
 Transformational Coach BSc (Hons)
 Psychology and Counselling

FEELING SAD, STALE OR JUST STUCK? Wanting change is the first step.

Overcome the mental obstacles that are constraining your life. Use our accomplishments to enhance the quality of your life.

<p>IMPROVE YOUR</p> <ul style="list-style-type: none"> ✓ Decision making ✓ Confidence ✓ Empowerment ✓ Personal relationships ✓ Overall health & wellbeing 	<p>ELIMINATE</p> <ul style="list-style-type: none"> ✓ Stress ✓ Anxiety ✓ Exhaustion
---	---

As your coach I believe in your ability to grow, change, overcome and recover. I will empower and encourage you to develop optimal physical and mental health and sustainable personal change.

AUTUMN SPECIAL OFFER
 6 x 1hr sessions only £300

GET IN TOUCH
anita@mentalhealthecology.com
 07916 151 095
mentalhealthecology.com

Individually tailored sessions, helping you achieve a happy, fulfilled life, wherever you're starting from.

Well Hung Framing
 by Kate Herbert

I am Kate, your local bespoke picture framer. I have a passion for framing and enjoy working collaboratively with my clients in selecting the best mounts and frames for all projects and budgets - from box framing, medals and memorabilia to paintings, prints and certificates. I also offer frame repairs and reglazing.

Please call, text or email to arrange a visit to my studio in Watchfield to discuss your requirements.

07710 348 263 | bykateherbert@gmail.com
[wellhungframing.co.uk](https://www.wellhungframing.co.uk)

Check out my website for further information → [wellhungframing.co](https://www.wellhungframing.co.uk)

SHRIVENHAM WATCHFIELD ROYALS FC
 ESTABLISHED 1920

HAVE A CHILD BETWEEN THE AGES 6 TO 15?

JOIN YOUR LOCAL FOOTBALL CLUB

A fun & safe environment for children to learn & improve their footballing ability

shrivenhamfcroyals@gmail.com

YOGA
 with some Pilates
Bishopstone Hall

Thursdays (term-time only)
 10.30 - 11.45am

No experience necessary
FIRST CLASS FREE

Contact Nickie 07503 157859
yogawithnickie@gmail.com
www.yogawithnickie.com

Also offered: Weekend & day Retreats; Private Yoga, Pilates, Relaxation & Meditation classes.

VILLAGE HALL news



HINTON PARVA

After the Deluge – news from Hinton Parva Village Hall

As readers will know, Storm Babet left its mark dramatically in Hinton Parva. During the night of 19/ 20th October 2023, torrential rain fell for hours on the already saturated Coombes. The normally benign and gentle stream on the western side became a deluge, overflowing into the Village Hall garden, submerging the hall and adjoining cottage 18 inches deep in foul smelling, sewage contaminated flood water. As fast as it had arrived, the water disappeared, leaving vile and filthy debris in its wake.

Volunteers moved quickly to remove as much of the silt, mess and “black water” sludge as possible, which undoubtedly saved the premises from even more serious damage. The shocked cottage residents and their pets were very kindly taken in by neighbours, in what proved to be a much longer than expected temporary arrangement. The hall’s insurers, Ecclesiastical, were extremely responsive. Electricians attended at 9pm that Friday night to make the hall and adjoining cottage safe. A professional drying and cleaning company was appointed and started work to sanitise the property on the Saturday. Massive driers and dehumidifiers were installed the following Tuesday and worked ceaselessly until late December.

When at last the building was declared dry, refurbishment

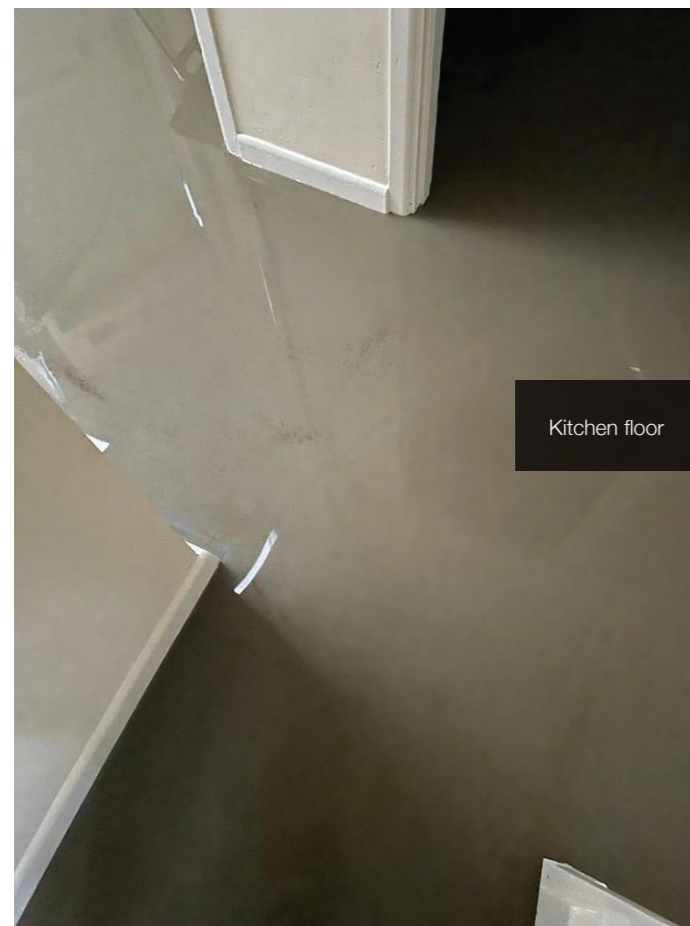
commenced. The kitchen, toilet area and store rooms in the hall were stripped out to remove compromised timber and plaster. Some cladding was removed from walls and the lovely wooden floorboards in the hall (several of which had sprung under the pressure of the flood water) were completely lifted to remove contaminated silt and insulation and to clear the underfloor air vents of debris.

Storm Nelson, on 28th March, with its apocalyptic hailstorm and following floodwater that roared down Body Horse Hill like a river, made it very clear that nature hasn’t finished with us yet. Hall committee members and builders alike held our breaths as the stream overflowed again and a brown torrent surged towards the hastily sandbagged external air vents. The makeshift defences held, with just a little mopping up required in the loos. Phew!

As we go to print, the kitchen has been replaced and the toilets are being refurbished. The final job will be restoration of the lovely reclaimed antique Columbian pine floor, which has been re-layed with fresh insulation. It will be finished and polished by the same firm that originally laid it in 2015.

Trustees of the village charities are working together to figure out some permanent flood protection, and hope to re-open for village events in May, if not before. We hope residents will make good use of our lovely hall for future work and social events, clubs and societies. Bookings can be made via the bookings secretary, Janet Hawkins on 01793 791391 or email jaymaybee02@icloud.com

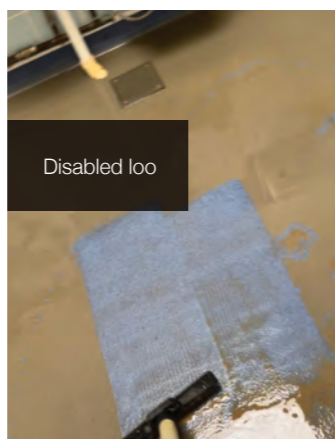
Val Brodin
Trustee, Little Hinton Educational Foundation



Kitchen floor



Exterior rear hall and cottage garden



Disabled loo



Hinton Parva



Water coming from underfloor air vents and door step

VILLAGE HALL HIRE
Both Bishopstone & Hinton Parva Villages Halls have availability if you would like to hire either of them.

BISHOPSTONE INFO/BOOKINGS:
Jo Homan: jo@theorchardproject.org.uk
Tel: 07714 745 408
Hourly rate: £11 residents, £15 non-residents

HINTON PARVA INFO/BOOKINGS:
Janet Hawkins: 01793 791391
Email: jaymaybee02@icloud.com
Hourly rate: £8 residents, £10 non-residents

TAKING BOOKINGS NOW FOR MAY!

HINTON PARVA BRIDGE CLUB
New members always welcome
Hinton Parva Village Hall
CURRENTLY CLOSED DUE TO FLOOD PLEASE CHECK FOR UPDATES WITH DALE OR JIM FRIDAY 7PM
For more information, contact Dale and Jim Mitchell
Email: hintonbridge@hotmail.co.uk
Tel: 01793 627301

BISHOPSTONE ALLOTMENTS AVAILABLE

On behalf of the Church Commissioners and their land agent Strutt & Parker, several half allotment plots are now available to rent by the local community. A perfect opportunity to grow your own fruit and vegetables.

The price is £8 per half plot per year (April to March)

No permanent structures such as sheds are allowed but low level storage is permitted.

Although livestock cannot be kept, bee keeping is encouraged by the owners.

If you are interested in taking an allotment in Bishopstone,

contact Steve Bell on 07598 185643



Food for Thought

Mobile fish and chip van

Available for private parties, weddings and all functions.

Find us each month at Charlbury Stables

(See the diary in this publication for actual dates)

Post Code: SN4 0DW

Tel: 07515 288414

Email: grahamrowcliffe58@outlook.com





Find us online



The Royal Oak Dairy



The housekeepers were, of course, delighted to discover a professional footballer flexing himself in front of the full length bedroom mirror at the end of last month, to the extent that one of them popped back into the pub immediately and promised us that she had kept her eyes closed for every second of this impromptu performance. I'd told her the room was empty, not knowing that one of the supermodels staying here that week had formed an attachment to a local League 2 player; and she'd gone off to perform on an early shoot, leaving him to luxuriate in the splendid surroundings of Kate's Folly. He seemed completely unperturbed, unlike the housekeeper.

It reminds me of the time Valerio, the lustrous Italian manager we employed here until 2019, was showing some late arrivals into one of our smaller rooms but accidentally picked up the wrong key before setting off for the hotel building. It was admittedly a very hot summer night, but finding two lush people perspiringly entwined on the top of the bed when he turned the lights on and said 'here we are...' was a shock to all five of the unwilling and mostly unimpressed participants. On another occasion, Valerio was convinced that we had some drug dealing guests ("everything they do is in cash, they're just using us as a base") and sent me over to check the room for any stash while they were out late one evening. Of course, he again gave me the wrong key, and I crept silently into Football Field to find an 80 year old couple sitting up in bed reading their bibles. I won't tell you the rest of it.

And while we're on this nostalgia kick, I'm reminded by Facebook that we still haven't found out the authors of the Dear Mr Arrogant, Yours Sincerely Mr and Mrs Thick note that arrived here by first class post just before Covid. Not much detail, but my regular jokey attacks on the village of Ashbury, combined with a finding a slug in their lettuce one day while having lunch, had made them apoplectic beyond reason. There are obvious culprits, none of whom we have seen for some time. I suppose it's one side of the coin, having a village pub run and staffed by people who have intelligence and opinions and who are not discouraged from displaying them on occasions. The other side of the coin is a drab characterless venue serving Carling and Sky Sports, which is still possible as we reach our twilight years in a state of perpetual exhaustion.

Ha ha ha. No chance.

April 21 sees our annual Drive it Day, all day, food in the garden. All your interesting cars and bikes and commercials please. First Saturday of May is when we expect summer to start, so we'll have Three Bop playing their cool jazz in the garden from 2pm. And we expect music on all Saturdays in the garden once Pig Racing is behind us, that's June 2 (a Sunday).

The Flying Pig is now booked into its Ridgeway mooring at least every Saturday and Sunday for the rest of the summer/autumn, usual opening hours roughly 10.45-2.30 ish, now with comfortable and smarter furniture. Mostly given to us, of course, village cast offs. John hopes to see you there sometime.

pip pip, TF



Bryn Llinos

A holiday cottage close to Beddgelert in the heart of Snowdonia

4* Rated with 5* Reviews

Excellent for beaches, mountains, walking, cycling and mountain biking

Heritage steam railway just 50 metres away at Nantmor Halt (Porthmadog to Caernarfon)

Discounts available for local residents to Bishopstone, please contact: brynllynos@yahoo.com

www.holidaycottages.co.uk/cottage/64657-bryn-llinos



Watchfield Opticians

Opening hours:
9am – 5:30pm Monday to Friday
9am – 1pm on Saturday

Your local Opticians situated next to the Co-op in Watchfield.
 With parking available right outside and easy access.
 Full Eye Examination.
 OCT and OPTOMap scanning.
 NHS funded eye tests available for those eligible.
 Children's Eye Test.
 Contact Lenses.
 Hearing Tests and Ear Syringing.
 Great choice of glasses and sunglasses to suit all tastes and pockets.



2 Majors Road, Watchfield, SN6 8TQ
 T: 01793 783848 E: info@watchfieldopticians.com
www.watchfieldopticians.com



Local organic products delivered to your doorstep by 7:30am.

Milk, Butter, Yogurt, Cream, Eggs, Bread and much more!



www.shop.10green.co.uk—01793 688834—admin@10green.co.uk

BARNES COACHES
 Request a free copy of our latest holiday brochure, and start planning your next adventure for 2024!
 01793 821303 | BARNESCOACHES.CO.UK

BARNES
 2024 UK & European
 Coach Holidays

BARNES
 24 UK & European
 Holidays

FREE
 HOME PICKUP SERVICE
 ON TOURS 4 DAYS & OVER!
See back cover of this brochure for our free and fast service

Spring, Summer & Autumn
 01793 821303
barnescoaches.co.uk

Est.1986

Chappells

ESTATE AGENTS

Sales • Lettings • New Homes

Specialists in village property for over 35 years.

Contact us now for your free valuation

01793 618080

sales@chappells.uk.com lettings@chappells.uk.com

rightmove





Walfinch
INDEPENDENT HOME LIVING

**Local Home Care
Tailored to You**

**We can arrange care
within 24 hours.**

Choose Us For

- ✓ Companionship
- ✓ Convalescent care
- ✓ Sitter assistance
- ✓ Live in care
- ✓ Night time care
- ✓ End of life care

Experience the unparalleled care journey with Walfinch – where every service is a testament to our commitment to your well-being.

01793 380 777
swindon@walfinch.com

Visit our website



Pearce Funeral Services



**Papermakers House
1 Rivenhall Road,
Westlea, Swindon
SN5 7BD.
T. 01793 422 422.**

**92 Ermin Street,
Stratton St Margaret,
Swindon
SN3 4NN.
T. 01793 832 072.**

Our family service caring for you

- Family-run with compassionate service
- Prepaid funeral plans available
- 'Recommended' in the Good Funeral Guide
- Committed to the Fair Funeral Pledge

"Outstanding is an understatement. These people are the ultimate in care and compassion. They understand the needs of the family."

Sept 2023 online review.

www.pearcefuneralservices.co.uk




BOOK NOW

North Wessex Downs National Landscape

**North Wessex Downs Walking Festival
31 May – 9 June 2024**

The fourth annual walking festival, organised by the team at the North Wessex Downs National Landscape, takes place from Friday 31st May to Sunday 9th June this year.

The festival provides the perfect way to get out into the countryside with a varied programmed of 29 events. These include opportunities to visit farms, seek out wildlife, discover history, picnic with the family, take part in a self-guided sponsored walk, or simply soak up the views from the top of the downs. Many of the walks are free.

All the walk guides are knowledgeable and welcoming and will bring alive some of their favourite places while you explore more of this stunning landscape.

Last year's festival was a huge success and many of the walks filled up very quickly so make sure you don't miss out by booking your favourites now.

Full programme details and booking information are on the website at: northwessexdowns.org.uk/walkingfestival

Contact:

Ann Shepley, Communications Officer, North Wessex Downs National Landscape:
ann.shepley@northwessexdowns.org.uk

Switchboard: 01249 706101

**North Wessex Downs National Landscape
Units 3-4, Denford Manor, Lower Denford, Hungerford,
Berkshire, RG17 0UN**

Festival organiser, Jacky Akam said:

"We're so excited about this year's programme. Our walks are a great way to explore more of this beautiful landscape and many of our walks, including our farm events, give walkers access to people and places not normally available to the public."



About

Landscape in England. It was designated as an Area of Outstanding Natural Beauty in 1972 to protect and enhance one of the largest tracts of chalk downland in southern England along with other beautiful landscapes. For more information about the National Landscape please visit: www.northwessexdowns.org.uk

The first North Wessex Downs Walking Festival took place in June 2019. Since then, the North Wessex Downs National Landscape team have organised festivals in 2022 and 2023. Individual walks are organised by our partners, individuals, businesses, charities and community groups and many of the walk leaders are volunteers.



SWINDON MEMORIALS
A Fitting Tribute to Your Loved One

Extensive range of memorial packages available:
Lawn, Traditional, Childrens and Cremation.

Please contact us for details
Tel: **01793 766 138** | Mob: **07532 032 054**
Email: info@swindonmemorials.co.uk

Swindon Memorials: Unit 19, Blackworth Industrial Estate,
Highworth, Swindon, SN6 7NA
Website: www.swindonmemorials.co.uk



THE OWL BARN
A MEMORABLE STAY IN HINTON PARVA

theowlbarnwiltshire.co.uk



GRANT FRASER TOWN & COUNTRY

We are a family owned, fully independent company who take pride in getting customers moved onto their next milestone in a simple and stress-free way.

If you are thinking about selling your property, to arrange a free, no-obligation valuation today, contact:

☎ 01793 228 440 📞 07737 745 231 ✉ grant@grantfrasertc.co.uk
www.grantfrasertc.co.uk


Rachel Payne
Professional Hairdresser



-  **Established 25 years**
-  **Based in Bishopstone**
-  **Olaplex, Moroccan Oil & Schwarzkopf Treatments Available**

For Appointments & Consultations
Contact 07527 607947





CREATIVE GRAPHIC DESIGN & ILLUSTRATION
DIGITAL WEB SEO EMAIL FOOTERS
SOCIAL MEDIA ONLINE ADS E-MARKETING
ANIMATION CREATIVE 3D FLIP BOOKS
PRINT LOGOS BRANDING MARKETING
ADVERTISING CREATIVE COPYWRITING
STATIONERY BROCHURES PACKAGING
POS GREETING CARDS BUSINESS CARDS
NEWSLETTERS LEAFLETS FLYERS
LARGE FORMAT BANNERS FLAGS
VEHICLE LIVERY SIGN WRITING
PROMOTIONAL ITEMS MERCHANDISE
EXHIBITIONS AND MUCH MORE

INFO@LULU.UK | 07795 086 197
© LULU.UK | 2024

GENERAL INFORMATION

Team

ADVERTISING:
Graham Curley: graham.curley42@gmail.com
Russell Hatch: russell_hatch@ebamooba.co.uk

PUBLISHING EDITOR:
Andrea Wadsworth: andrea@luli.uk

SUB-EDITOR:
Val Brodin: valbrodin@gmail.com

CREATIVE COPY:
Tim Finney
Richard Walker: richardw@eddingtons.co.uk

TREASURER
Andy P: andrewpocock@yahoo.co.uk

DISTRIBUTION:
Christine Thomas: littlecot2010@hotmail.co.uk
Yuet Dickinson: 07757 998 698

Contributions

If you'd like to write an article or submit any photography please email Andrea or Val for consideration in the next issue. We aim to distribute the newsletter on or around 15th of each month.
DEADLINE for any considerations will be the last day of the previous month but we welcome submissions sooner.
If you would like an advert designing for placement in the village news, please contact Andrea who offers a discounted rate for Village News adverts.

We are non-profit!

The Village News is created and run by a small group of volunteers and is a non-profit organisation affiliated to Bishopstone Village Hall. Reg Charity no 271165.

Donations

If you would like to make a donation to help with the upkeep please contact Treasurer Andy P, or there are additional copies available and a donation box on the counter in Bishopstone Stores.



FIND US ONLINE

www.bishopstoneandhintonparva.org

f /groups/bishopstoneandhintonparva

Send us your DIARY DATES
Email: BishopstoneEditor@gmail.com

General Information

Diary

April 2024 - May 2024

2024	Time	Event	Place	Contact
Wed 10.04	7pm	Bishopstone & District Gardening Club: Rebecca Brain, 'Using Wildflowers in the Garden' talk (pg. 5)	Bishopstone Village Hall	Marion Peck 01793 791 001
Sun 21.04		Drive it day: Classic Cars and motorbikes (pg.18)	The Royal Oak	01792 790 481
Tues 23.04	St George's Day			
Wed 08.05	7pm	Bishopstone & District Gardening Club: Adam Alexander - The Seed Detective Talk (pg. 5)	Bishopstone Village Hall	Marion Peck 01793 791 001
Sat 11.05	10.00am to 11.30am	Bishopstone & District Gardening Club: Annual Plant Sale	Bishopstone Village Hall	Marion Peck 01793 791 001
Sun 02.06		International Pig Racing Day (pg 8)	Royal Oak/ Cues Lane	01792 790 481
Mon 06.05	Early Spring Bank Holiday - May Day			
Sat 04.05	from 2pm	Live Music: Three Bop playing cool jazz (pg.18)	The Royal Oak Garden	01792 790 481
Mon 27.05	Spring Bank Holiday			
Sat & Sun for the rest of the Summer & Autumn (at least)	10.45-2.30 ish	The Flying Pig: The Royal Oak's Mobile food van serving delicious Hot & cold food (pg.18)	The Ridgeway SN6 8NZ	01792 790 481
Every Saturday afternoon during July & August		Live Music in the pub garden (pg 18)	The Royal Oak	01792 790 481
Every Tuesday	9.30am	Fitness Classes. All abilities	Bishopstone Village Hall	lorna.sams@outlook.com
Every Thursday	10.30am - 11.45am	Yoga with Nickie Heap	Bishopstone Village Hall	yogawithnickie@gmail.com
Fridays	7pm	Hinton Parva Bridge Club (check location due to flooding)		hintonbridge@hotmail.co.uk
2nd Mon of month	7.15pm	School fundraising supper, now supporting Highworth Warneford School Music Department	The Burj, Foxhill	WrightK@warnefordschool.org.uk
2nd Thurs of month	7pm Start 7.30pm	WI: Bishopstone & Hinton Parva WI	Either Village Hall	Jan Chapple janatwan@icloud.com

Dates are correct to the best of our knowledge at time of going to print. Please see Facebook for any interim updates.

Church Services - pg 10 Parish Council Meetings - pg 13

The views of individual writers expressed in this magazine do not necessarily reflect those of the editors, the parish council or the church. If you have any feedback or questions, please contact one of the editorial team listed to the left. Apologies for any stray typos. We try hard to catch them all but occasionally some escape. You may also deliver items by hand to Bishopstone Stores and Lynne will kindly pass anything on to us. Please make sure that you include any names and contact details so that we may get in touch with you. None of these personal details will be published unless we are specifically asked to do so.

Tell us your thoughts!
'LETTERS TO THE EDITOR'
Email: BishopstoneEditor@gmail.com