



# VILLAGE NEWS

JUNE 2026



## ALFRESCO OWNER LOWRY REVEALS HER PIG RACE TRAINING SECRETS!

After storming home in three of the four races at Bishopstone's infamous International Pig Racing Festival, successful pig owner Susan Lowry sat at home counting the £20 notes and told your reporter all her secrets.

Well, the secrets of training a good pig, at least!

'You have to catch them when they're young, of course', she started. 'We got Porky Pine at about 2 months, and began with some Ozempic, he was getting a bit chubby. Then we sourced a high protein organic fibre diet, built an imitation race track round the garden, and we were amazed at the outcome. We've wanted to win this for the past 15 years, and finally we did it'. Apparently her 6 year old grandson won £55 on the second race and said he was giving half of it to his parents to help with their new house extension!

Despite the best efforts of clerk of the course David Henderson to hinder Porky Pine's chances in the last race, including making it start after the others, Porky Pine had only one aim, to carry on winning. It scraped home by a nose!

On a more serious note, the organisers would like to thank a whole host of villagers for their contribution to making 900 people enjoy themselves on a pointless day of organised chaos. The Cues Lane residents for putting up with the closed road; Russell Hatch for his sorting of car parks, with village hall volunteers, and PA systems; Rachel and John for the commentary tower and bunting; Tom, Millie and Tabby Green for their Piggy Power endeavours; David

Henderson and family for building the track and taking care of the pigs (kindly loaned by Helen Browning); and last but certainly not least, Richard Walker and his talented mates in EZ Tiger for their amazing music to end the day. To be honest, the quality of music throughout the day was way beyond anybody's expectations. As their agent, I am happy to accept commissions!

Charities also benefited—between us all, we squeezed about £1600 out of the pot, the biggest slice to Prospect Hospice, with other stuff to Bishy Village Hall and The Parish Newsletter (wot you are currently reading!).





## THE INSIDE LANE

SWINDON HIGHWAYS AND TRANSPORT NEWS

We're delighted the Office for Rail and Road (ORR) has confirmed it has approved GWR's application to run a daily two-hourly direct rail service between Swindon and Oxford on weekdays and Saturdays.

The new service, which it is hoped may become hourly in the future, builds on a Saturday trial of the new route and follows a successful campaign by the Council and neighbouring local authorities in Oxfordshire.

Evidence gathered by England's Economic Heartland demonstrates that improved east-west connectivity along the Swindon to Oxford corridor would deliver substantial economic, environmental and social benefits by strengthening labour mobility, supporting innovation and reducing car dependency.

The new service is set to begin on Monday (17 May).



**£3 ENTRY FEE** **KIDS ENTRY FREE**

# LIDDINGTON SUMMER FETE

**SATURDAY 13<sup>TH</sup> JUNE 2026**  
**12 NOON TILL 4PM**  
*Liddington Playing Field and All Saints Church*

**ARKELLS BEER CABIN** (Supplied by The Village Inn) **BBQ** **LIVE MUSIC**

**GAMES** **Cakes and Cream Teas** **Ice Cream Van**

**Fairground Rides** **TOWER TOURS** **STALLS** (Gifts, Treats & Lovely Local Traders)

**DR BIKE** (Free bike checks, advice & minor repairs) **SCAN ME** (For more information visit our Facebook page)

Liddingtonfete@btinternet.com Contact Andrew on 07973 655613

**PARTY AT THE PUB**  
*from 5pm till late*  
 music, drinks & food

## Bishopstone Stores

Great news – we've decided that despite the rain and colder than should be temperatures, it is officially summer. This means that once again our door will be open on a Wednesday morning, from 9am till 1pm, and the lovely Lou will be in the shop to serve you. She will be ready and waiting to greet you. The shelves will be well stocked from Tuesday's deliveries of eggs, fresh chicken and dairy produce.

Talking of eggs, we only sell brown. You can't have failed to have seen the major supermarkets shifting to white eggs and all the opinions that have arisen with this decision. Whether it's a welfare concern, a sustainability push or a profit-driving exercise, it seems that we all need to check where our eggs have come from and how happy the hens are. Our lovely brown eggs are organic and free-range; the welfare of the hens is of utmost importance and is very closely monitored. Our supplier, The Good Egg Company, has been at Paxcroft Farm since 1947 and knows everything there is to know about poultry and egg production. They maintain a good agricultural balance, being a mixed farm with a Friesian dairy herd and home-produced cereals, creating healthy and productive soils, enhanced with organic manures. We will keep sourcing our eggs from them, and they will continue to be brown.

Please help us support good, local businesses by supporting us and popping in when you can; we are, after all, closer than Shrivenham. We have lots of fantastic local produce here in the shop, meat from Grove Farm, bread from Astons Bakery, dairy from Berkeley Farm, juice from Savernake, oils from Stainswick, to name just a few. It's people like you who keep people like them going.

Hope to see you soon, Lynne x

 @helenbrowningsbishopstonestores  @bishopstone\_stores



**Opening Hours**  
 Monday, Tuesday, Thursday,  
 Friday & Saturday: **9am - 6pm**  
 Wednesday: **9am - 1pm**  
 Sunday: **9am - 3pm**

# RECYCLING MATTERS

by Karen Walker

First of all, an ant update! What seems to be working best at managing our little unwanted visitors is keeping the kitchen surfaces incredibly (for us!) clean. Anything that doesn't go into the dishwasher, gets rinsed and awaits the now daily washing up session as far from the ants' entry point as possible, rather than next to the sink. Now there are normally only two of us at home and we have a dishwasher, we don't generate that much to be washed up by hand so I wasn't averse to letting it accumulate to justify the hot water and washing up liquid. But that is now all in the past! An occasional wipe over with spirit vinegar seems to help as well. I'm becoming obsessed – it's a battle of wills! Every time I go into the kitchen, I scan the floor and surfaces and the occasional pathfinder gets swept up in a dustpan and escorted off the premises. As I tap them back into the garden, I have visions of them treating their incursion as some sort of ant theme park ride and them scuttling off to tell their ant-friends about all the fun that can be had....

Talking of annoyances.... We've been inundated by email, letter and text by Thames Water telling us of the need to sign up for a water meter. I decided to bite the bullet and found that none of their contact points, apart from the phone line, which was closed at the time, actually worked! There were broken hyperlinks and their web page to book an appointment, once you found the page, wouldn't accept the reference I had been given. Aargh! I understand that water meters are the fairest approach and hopefully will help us all be more mindful of our water usage but if you're going to spend huge amounts of money by contacting people in multiple ways, why not ensure the information that you're sending out can actually be used, rather than throwing money (pun intended!) down the drain? And then once you

manage to get an appointment you're given an unhelpful 5 hour time-slot (morning or afternoon) with no narrowing it down the day before like most other service companies seem to do these days so you can better plan your day. Thames Water has a very poor reputation and I'm afraid this did little to endear them to me. Fingers crossed for the water meter installation!

Plastic Free July is fast-approaching! This is an annual global initiative to encourage individuals to choose to refuse one (or more) item of single-use plastic in the month – and then hopefully longer. More information, resources and ideas can be found at [plasticfreejuly.org](http://plasticfreejuly.org).

One local resource that might be able to help you in your plastic-free endeavors and potentially save you money at the same time is The Hub in its new premises in Shrivenham. It is well worth a visit if you haven't been in yet. It sells zero waste products, refillables, reusables and has a great selection of pre-loved items including jigsaws and adult paperback fiction at bargain prices. There's also a children's room filled with clothes (including school uniform), toys and books and a room filled to the brim with crafts, stationery and cards. Where else can you buy a birthday card for 50p? A lot of these items are new and if not individually priced, are sold by weight and you get an awful lot for your money! They still have a great selection of pick and mix too – the fudge is particularly popular! The shop is a little treasure trove. There's a lovely uplifting quote from the late anthropologist Margaret Mead, that's writ large on one of the shop's walls – 'Never doubt that a small group of thoughtful, committed, citizens can change the world. Indeed, it is the only thing that ever has.' Inspiration for Plastic-Free July if ever there was one!

## Are you interested in becoming a Governor at Bishopstone School?

- Do you care about improving children's education and want to contribute to your local community?
- Can you volunteer, become part of a team and value contributions made by others?
- Are you willing to challenge and ask questions?
- Are you open to new ideas? The time commitment is probably not as much as you fear.

### Have you experience in any of the following:



- Education (not connected to the school),
- Finance,
- HR, External Communications,
- H&S

## Want to find out more? We need people just like you!

Please contact Lynne Fletcher, Governance Professional by email, [clerk1@Bishopstone.Swindon.sch.uk](mailto:clerk1@Bishopstone.Swindon.sch.uk) or the school office on 01793 790521

# HAPPY GARDENS

by Jane Pearson



## Monthly Musings

Please excuse me but this month's musing is a cry for help!

Many of you will sadly be aware that we have a box leaf caterpillar problem in the area and our beloved box plants are being decimated. Alarmingly, they are also munching through our beautiful ancient box trees that line the lanes of Bishopstone and beyond. The caterpillar can strip a plant of leaves and munch the bark. Unable to photosynthesis and starved of energy, the plant dies.

I spent the weekend picking the caterpillars off my home grown ten-year-old box plants by hand, however, trying to manage our larger older trees is a challenge.



Above left: Box Leaf Caterpillar. Above right: Caterpillar damage

The box leaf moth arrived on the south coast of England in 2011 and is gradually spreading through the country. It's a new species to our island and as yet, has few natural predators. Some sparrows and tits and parasitic wasps are beginning to feed on the caterpillars but not in large enough numbers to control the problem. I hate to be gloomy, but our trees and topiary desperately need our intervention or we will lose them.

The RHS recommends removing caterpillars by hand (wear gloves) in addition to applying nematodes to attack the caterpillars and luring the moths with pheromone traps (Dragonfli). There is also a chemical control called Xan Tari (by Topbuxus). It's unlicensed in the UK but available to buy on the Topbuxus European website. In addition, applying a specific box feed will help the plants to recover.



Above left: The Box Tree Moth, has brown wings with a purple iridescence and white crescent marks on the forewing. Above right: Adult Box Tree Moth.

I used Xantari last year with favourable effect, but I am now testing the biological approach and have ordered nematodes and pheromone traps from a UK based company called Dragonfli (Dragonfli.co.uk) The company state that their moth traps lure only the specific species of box moth and not other moths. Other product providers are available.

The survival of our beautiful ancient box lined lanes, as well as your favourite topiary, depend on our intervention. Please consider using products to help control the threat and perhaps try some caterpillar picking (with glove clad hands), it's surprisingly satisfying!

For more information, visit:  
[www.rhs.org.uk/biodiversity/box-tree-caterpillar](http://www.rhs.org.uk/biodiversity/box-tree-caterpillar)



Above: Beautiful double herbaceous borders, oozing with masses of Delphiniums, Daisies and Geraniums, with a magnificent 'Belvedere' Rambling Rose, knitting the two together.

## The Potting Shed: Things to do in June-July

- Regular deadheading, feeding and watering your hanging baskets and containers, is the key to long lasting displays. A tip: Use a liquid plant food higher in potassium (K) than phosphorous © and Nitrogen (N) to encourage good flowering and ensure the compost never dries out.
- Directly sow hardy perennial seeds such as aquilegias in sun or partial shade, to flower next year
- Lightly prune shrubs such as philadelphus and lilac directly after they've finished flowering. You can also trim back hardy geraniums to encourage fresh new growth and tidy up early flowering clematis. Add a handful of general purpose fertiliser around the base and give a good watering.
- Keep deadheading, watering and weeding, it's never too late to install water butts!

Happy Gardening!



07811 367320  
janepearsondesign@icloud.com  
The Lynchetts, Icknield Way, Bishopstone  
[www.janepearsondesign.com/hints&tips](http://www.janepearsondesign.com/hints&tips)

Please visit my website at [janepearsondesign.com/blog](http://janepearsondesign.com/blog) for Readers Question Time and much more!  
[www.janepearsondesign.com/blog](http://www.janepearsondesign.com/blog)

# The Ridgeway Gardening Club

Contact: Marion Peck: 01793 791 001  
[ridgewaygardeners.co.uk](http://ridgewaygardeners.co.uk) | [info@ridgewaygardeners.co.uk](mailto:info@ridgewaygardeners.co.uk)



Firstly, our **ANNUAL PLANT SALE** on 9th May was once again a great success, . A queue of eager customers waiting, carrier bags and boxes at the ready, to browse and select the plants of their choice.



were so very generous in their donations, raising over £600 for the clubs much needed funds to ensure we can continue to have excellent speakers.

Keith then introduced **Jane Pearson**, who lives locally in Bishopstone, who came to tell us about "**Creating a New Border from Scratch**"

She began by telling us a little about her background, from a child who hated the idea of gardening in the cold of Yorkshire, to becoming a fully qualified **Horticulturist and Garden Designer**, having been inspired by her grandmother in Sussex where the climate was far more welcoming!



Jane then talked through the various considerations when planning a new border and the questions she would ask a client. Why do you want a border? What is its purpose? Maybe to hide something, create privacy, be a focal point, frame a view or simply to look beautiful, there can be so many possible functions.

With that in mind we have to be aware of other factors:- Firstly the environment ie the soil type, situation shade, exposure to the elements are just some of the things to think about, plants can be very fussy! Then there's the aesthetics, size and shape, colours and foliage, formal or informal.

Of course we also have to consider future maintenance requirements, irrigation, who will be using the garden, planting for wildlife and not least the available budget.

It's then time to get out the books, visit Garden centres and

nurseries, look online and research the plants that you like and whether they would be suitable. Colour, texture, size and leaf shape are all important remembering that it is essential to have the **RIGHT PLANT** in the **RIGHT PLACE!**

Such a lot to think about and plan, but all part of the enjoyment and satisfaction of gardening, and worth taking the time and advice to create the border of your choice to create and/or transform your garden.

Another very interesting, informative and thought provoking evening.

## Diary Dates

**Thursday 18th June ; Trip to HIDCOTE** : see details on our website, or contact by email.

**Saturday 25th July : 2pm : Guided tour of Lower Farm, Bishopstone.**

The Garden club have been offered a wonderful opportunity to visit the Eastbrook No-Dig organic vegetable beds and Agroforestry project at Lower Farm on the edge of Bishopstone. Helen Browning will give a tour of the Agroforestry and Pete Richardson will show the vegetable growing operation. The whole site at Lower Farm is a haven for wildlife and a pioneering project of national acclaim, right on our doorstep.. prepare to be inspired!

Non-members are also welcome to join us please contact the club on [info@ridgewaygardeners.co.uk](mailto:info@ridgewaygardeners.co.uk) to let us know you would like to join. Lower Farm is 30 minutes walk from the village centre, and we will also set up a car sharing pool as parking on site is limited

# MOWERFIXER

*maintenance/repair service  
mowers, hedgecutters  
strimmers etc.  
for the Ridgeway villages*

*New & 2<sup>nd</sup> hand  
garden machinery for sale*

**0789 979 1833**  
**[doug@mowerfixer.co.uk](mailto:doug@mowerfixer.co.uk)**



# Ask Fanny. Loose lips, sharp advice.

Write to Fanny: [BishopstoneEditor@gmail.com](mailto:BishopstoneEditor@gmail.com)

Dear Fanny  
I recently, last month, emerged from my hovel on the road to nowhere at the bottom of Hinton Parva, only to find that I was faced with a 'road closed ahead' sign and a diversion taking me back towards Swindon. I then tried coming back from the Swindon direction and found another road closed sign at the Wanborough cross roads, taking me this time to Foxhill. A day later I was coming from the Bishopstone direction and came across a road closed sign that took me up the hill past the Water gardens. When I later tried to get to Idstone, the road was apparently fully closed at the New Town lane junction in Bishopstone.

Other people I spoke to had tried catching the bus to wherever their destination was and found themselves being dropped in the middle of nowhere because the bus drivers didn't know what to believe. Some people failed to make hospital appointments.

Is there any explanation for this chaos?

Yours, disturbed, Brian Brown, HP

Dear Mr Brown  
I have become slightly aerated about this.

All I can say is that this is another disgusting state of micro-affairs and shows this country in the macro-mess it has got itself into. It would be easy to blame Swindon Borough Council for this but actually it's Oxfordshire CC that's to blame. It was all due to some pathetic tiny side road works in Idstone of all places, so far from Oxfordshire CC's base that they don't even know the village exists, and some cowboys took on the job of

repairing some slightly damaged bits of road—and also took on the job of 'traffic management', which is putting up all those ghastly signs in the wrong places. What you and I, as council tax payers, don't know is that the traffic management people are PAID handsomely for EVERY sign they put up, and since no-one ever comes out to check, it's estimated that there were about 15 road closed and diversion signs erected, all pointing people in the wrong direction, hence the resulting chaos, for a whole week. When someone complained about the signs, they simply moved them somewhere else and pointed people in a different direction. When I personally drove down to Idstone (bravely ignoring the signs) I discovered about 10 layabouts smoking fags on the grassy banks and a single machine smoothing out some tarmac patches about 50 m below the main road. I could have driven a tank through there, never mind my old 2CV.

When there were some planned works in single track Cues Lane last year, about three weeks before the work started, some signs were put up advising users of future inconvenience. The signs were so bloody big that they blocked the road and residents had to chuck them into the bushes just to get out.

There is little point it seems in having a regular useful job. We might as well all go into the two most lucrative trades—filling pot holes and erecting traffic signs. Oh, and manufacturing high-viz vests. God, I hate the sight of them. There's no point in the rest of us trying to earn a crust doing a decent job of mending people or selling turnips.

Don't get me started! Your noisy Fanny

## KIDS CORNER

**Win a bag of sweets!** Please submit your finished masterpiece to Lynne at the shop. Drop it in, or submit by email to: [shop@helenbrowningsorganic.co.uk](mailto:shop@helenbrowningsorganic.co.uk)

### COLOURING COMPETITION



## JUNE HARD SUDOKU

**LAST MONTH'S WINNER IS Suzy**  
Grab your voucher from Lynne at the shop!

This month's was pulled from the hat by Lynne in the shop! Well done **Suzy** for winning this month with your Codeword entry!

Other this month entries:

**Codeword:** Rachel Hale, John Iles, Gary Pass, Yuet Dickenson, Keith Franklin, Debbie Clarke, Peter Walker, Nick Steele, Ninx Flanagan, G & G Philpotts

**Sudoku:** Keith Franklin, Alex Hirst, G & G Philpotts, Suzy, Rachel Hale, Nick Steele, Peter Walker, Debbie Clarke, Geraldine Pass, Yuet Dickinson, John Iles

Those who complete both puzzles have their name put into the hat twice. **Well done to all the newbies this time. We've had a record number of entries!**

3	6			9				2
1			4					9
	7	6	8	5				4
			6	7		1	5	
9	1				3	2	7	
			1				9	
		3						

### Win a £10 Voucher!

Please submit your completed Sudoku and/or crossword by the end of each month, either in person or by email to Lynne at Bishopstone Stores.

A £10 voucher is awarded each month — one winner will be drawn at random from all correct entries. The draw takes place on the 1st of the month, and the winner will be announced in the following issue. You can collect your voucher from the shop after the announcement. The voucher gives you £10 off your bill at either the pub or the shop. Drop them in, or submit by email to: [shop@helenbrowningsorganic.co.uk](mailto:shop@helenbrowningsorganic.co.uk)

## JUNE CODEWORD

Codewords are like crossword puzzles but have no clues!

Instead, every letter of the alphabet has been replaced by a number, the same number representing the same letter throughout the puzzle.

All you have to do is decide which letter is represented by which number!

To start you off, we reveal the codes for two or three letters

	14		20		21		26		5		5		21	
14	23	7	22	6	26		22	10	23	15	11	23	9	12
	2		6		14		19		12		19		22	
2	6	13	9	15	13	14	4		12	13	12	12	22	22
	11		12		9		24		11				17	
13	14	26	23	24	24	11	22		21	8	11	1	23	19
	23		10				9		22		9			
13	21	3	13	20	23	15		11	9	25	23	14	9	22
			9		1		7				16		23	
3	23	7	18	19	23		13	26	26	14	22	13	7	3
	16				14		20		22		14		18	
21	3	22	15	15	4		26	13	19	26	13	10	19	23
	13		6		22		3		11		10		11	
25	19	13	20	23	9	7	22		7	22	19	22	9	4
	23		26		23		14		4		23		23	

ABCDEFGHIJKLM  
NOPQRSTUVWXYZ

1	2	3	4	5	6	7	8	9	10	11	12	13
14	15	16	17	18	19	20	21	22	23	24	25	26

Winning Sudoku from last month

D	C	A	V	A	F	C								
V	L	S	U	A	L	E	H	B	L	A	Z	O	N	
N	M	H	R	D	K	B								
W	O	R	M	W	O	D	I	C	E	B	O	X		
S	E	N	U	C										
A	B	R	A	D	O	R	A							
U	B													
T	R	U	M	B	H	E	R	E	B	O	U	N	D	
N	O													
F	E	U	D	A	L	Q	U	A	N	T	T	V		
X	Y													
E	T	L	A	G	E	U	P	H	O	R	T	A		
M														
E	P													
T	O	D	E	M	I	C	A	C	H	I	N	G		
T	O													

# DICKIE'S diary

Richard Green



Historic box hedging lining our village lanes is such a feature of Hinton Parva and Bishopstone, less so in Idstone, Ashbury and Kingston Winslow. Those that were treated against the box moth caterpillar last year look good so far this year. Last year's treatment appears to have persisted. However, there is severe noticeable damage showing in places where nothing was done. Be prepared to act.

Farming is such a long game. We plant wheat in the autumn, harvest 10/11 months later and may not sell the crop until the following spring—18 months. An elephant's pregnancy is 20 months. Fortunately, cows only take 9 months like humans to have their calf but another two years at least will pass before most can be sold as beef or join the dairy as a heifer in milk—33 months. Ewes take 147 days to have a lamb once a year and sows 115 days (3 months, three weeks, three days) which will allow 2-3 litters each year.

We are used to this long game with delayed income from sales, except that currently income is not keeping up with escalating costs. Conflict in the Middle East and the Iran blockade of the Straits of Hormuz causes severe inflation to oil and gas supplies. As you know this affects diesel which is up 40%, crop chemicals escalate as oil based and fertilizer is up 25% to over £500/tonne for 34.5% N. Recalling the time when it was under £100/tonne shows my age! These input costs (and in some cases this can include rent in advance) are due well before any sales incomes are banked. In past years fertilizer has been bought forward in June for cash or financed for autumn payment. Farmers will not be keen

buyers in June this year. Organic farmers are allowed a smile but organic crop farming can be challenging. If these high costs persist there could be renewed interest in applications this September for the next DEFRA support schemes under the SFI – Sustainable Farm Initiative where environmental crops might be attractive as a secure return. Alternatively, some fields might be unplanted and fallowed for a year to give a clean start a year later as a viable return is uncertain. This part of the world and further east is well short of rain with similar concerns in the USA mid- west. Grain prices are moving off the floor driven by the USA situation. Let's hope and pray for a solution to the Iran war and that we get a proper rain here by early June "to keep our crops in tune". For the last 30 years the price of land has been detached from its earning capacity. Sensing the "wind of change" (Harold Macmillan 1963 over apartheid) the Farmers Weekly has many more farms for sale than usual and the Duchy of Cornwall is selling 20% of its land portfolio.

## Inside the Peach Pip

by Anna Bareham

*The Penguin Lessons*, by Tom Michell

And so it was that, although literally the humans fed him with fish, figuratively Juan Salvado had them all eating out of his hands.

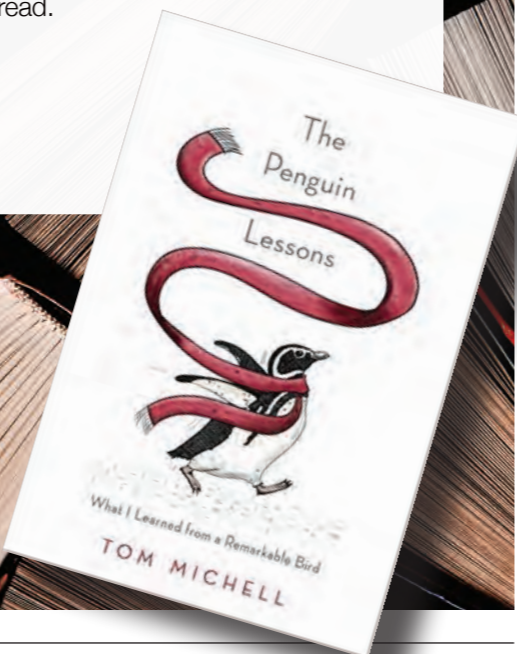
In this memoir of Tom Michell's, he recounts the unlikely tale of a friendship struck up between himself and a Magellanic penguin in 1970s South America, when with youthful abandon he rescues the bird from a devastating oil spill on the Uruguayan coast. Juan Salvado, or 'John Saved', becomes the penguin's name.

After initial skepticism from both man and penguin, each party soon realises that the other means no harm, and they begin to have fun together and to learn from each other. Michell goes to great trouble to smuggle his new friend across the border to Argentina, where he teaches at a boarding

school. Naturally, his students are captivated by Juan Salvado, and a symbiotic relationship ensues between the penguin and his many eager companions.

This is an amusing and heartwarming true story that holds an important message about humanity's place in the family of things - how we relate to and treat our fellow inhabitants on this beautiful planet. Well worth a read.

Flinging love,  
Anna



# Photo of the month

SEND US YOUR SNAPS

Email: BishopstoneEditor@gmail.com



Thank you to Dinesh Thanigasalam for this month's winning dragonfly photograph (left) – it's absolutely beautiful! We'd also like to thank Justin Moss for submitting his lovely *Chair With a View* image (below), which takes this month's runner-up spot. It was a very close call!

We also couldn't resist including Justin's striking *Red-legged Partridge (showing off his red leg)* photograph, which you'll find featured underneath.



Become the village paparazzi with a keen eye and a steady hand. Each month, our panel of highly opinionated judges (imaginary monocles firmly in place) will crown a winner. The prize? Full-colour glory and the quiet satisfaction of being talked about in the queue at the shop.

# CHURCH NEWS



## A Letter From The Vicar

Dear Friends,

It is not every day you get an invitation to join the monarch for afternoon tea at Buckingham Palace. After an initial email exchange, in which we indicated we would be minded to accept such an invitation, we received a formal invitation which said "The Lord Chamberlain is commanded by His Majesty to invite The Reverend Stephen and Mrs Paynter to a garden party at Buckingham Palace on Tuesday, 12th May, 2026, from 4pm to 6pm. Naturally enough we accepted this invitation and duly attended. It was a happy, relaxed and very enjoyable occasion. I believe this invitation was due to the fact that the patron of the parish here in our villages is the Lord Chancellor. We mingled cheerfully with the eight thousand or so other guests present. It was very nice to be a part of what is a bit of a British institution. It was noticeable that no egos seemed to be on display. Dress was modest, even quite functional on the most part. Conversation was friendly and easy. Everyone there I think were volunteers, or servants of their local communities in some way. I think most of us were mildly amused to find ourselves at such an occasion, but enjoying it very much none the less. The delivery of the afternoon tea to so many was handled with ease and sense and, as you would expect, the sandwiches and cake were delicious, quality items, even if the tea was cold almost as soon as it was in the cup (another British institution). We saw the King and Queen step out from the Palace at about 100 yards distance and then disappear into the throng. Their precise location at any given moment given away by the staffs of the Yeoman of the Guard and a forest of arms raised with phones to take a picture. We walked gradually around the lake and enjoyed the beautiful gardens in full spring growth and tried to master the art of a selfie – fortunately people were very ready to offer to capture the moment for us on our phones. It was a thoroughly enjoyable afternoon and we were very grateful for the opportunity to experience it for ourselves.

Of course, in the Christian faith we each receive a far more extraordinary invitation from the King of Kings and Lords of Lords, from Jesus Christ himself, to come into his dwelling place and share food at his table. We each receive an invitation to enter the Kingdom of God as his children and choose to become his subjects. What a priceless invitation this is. As John says in his gospel **to all who received him, who believed in his name, he gave power to become children of God**, and then again in his Revelation 3:20 **Listen! I am standing at the door, knocking; if you hear my voice and open the door, I will come in to you and eat with you, and you with me.** We have all been invited, but the question for each of us is this, have I responded to this extraordinary invitation from the creator and redeemer of the whole universe to enter into fellowship with him and live each day in communion with him and under His loving rule in my life?

Kind regards, Revd Steve Paynter  
stevedpaynter@gmail.com 01793 296870

## St Mary's Church Cleaning Rota 2026

June '26	Debbie & Rachel P.
July '26	Jill & Karen Mac G.
Aug '26	Fran & Karen S.
Sept '26	Chris & Gill
Oct '26	Jane G. & Maggie
Nov '26	Sarah & Jenny
Dec '26	Liz & Gaye

Thank you to the great team who help clean the church. We would love to hear from new volunteers who'd like to join us. It involves no more than 4hrs cleaning during your month on the rota, so not too onerous!  
**Please contact Sarah Bally 07788715742**

Our churches are: All Saints: Liddington SN4 0HB,  
St. Mary's: Bishopstone SN6 8PY,  
St. Andrew's: Wanborough SN4 0BZ,  
and St. Swithun's: Hinton Parva SN4 0DW.



**Church Services.** Full details on [www.achurchnearyou.com](http://www.achurchnearyou.com)

## The Parish of the Wellspring Villages

The main morning Church Services always start at 10.30am.

Day	2026	Time	Venue
Sun	14.06	10.30am	MW with HC, St Mary's
Sun	14.06	4.00pm	Informal Afternoon Service, HP Village Hall
Sun	21.06	10.30am	MW with HC, St Andrew's
Sun	28.06	08.30am	BCP (1662) HC, St Andrew's
Sun	28.06	10.30am	MW, St Swithun's
Sun	05.07	10.30am	MW with HC, All Saints
Sun	12.07	10.30am	MW with HC, St Mary's
Sun	12.07	4.00pm	Informal pm. service, HP Village Hall
Sun	19.07	10.30am	MW with HC, St Andrew's
Sun	26.07	08.30am	BCP (1662) HC St Andrew's
Sun	26.07	10.30am	MW, St Swithun's

All dates and times are submitted to the Editor.

## Prayer

Heavenly Father, thank you for loving us and through the death and resurrection of your Son Jesus Christ, inviting us into your Kingdom, to know you in our hearts through faith and to live for you in our lives through the strength of your Holy Spirit. Enable me know to accept your invitation and live with you for evermore. Amen.

## We'd love your help caring for our churchyard!

Bishopstone St Mary's Churchyard Working Party:  
**Saturday 20th June - 9.30 -13:00**

We will be shredding clippings into mulch and carrying out weeding. All welcome (children must be supervised).

You're very welcome to join us if you have only half-hour or so to spare.

Thick gloves, sturdy shoes, and sun hats plus water (if hot) advised. Please bring weeding tools if you have them, and bags for the chippings will also be useful.

Does anyone have a chipper they could bring? We have one but it's a big pile of clippings!

**Refreshments:** tea, coffee, squash provided.

**For more info or to let us know you would like to help, please contact: Chris 07789 414147**

Photo: Kate Wright, St Swithun's, Hinton Parva

HC: Holy Communion, BCP: Book of Common Prayer, MW: Morning Worship, Informal Afternoon Service of worship songs, Bible reflection, prayer and fellowship.

[WWW.BLOOMFIELDSFINEFOOD.CO.UK](http://WWW.BLOOMFIELDSFINEFOOD.CO.UK)

Award winning  
**DELICATESSEN  
COFFEE SHOP  
& FOOD TO GO**



Best in Local, Regional  
and International Food  
Since 2006!



**OPEN DAILY**

**EAT-IN AND TAKEAWAY  
DELICIOUS, HOMEMADE  
FOOD. BREAKFASTS, LUNCHES  
MEALS. COFFEE & TEAS,  
SANDWICHES & BAGUETTES,  
SALADS, SAVOURIES, SOUPS,  
PLUS LOTS MORE...**

*Outside Catering*

**ARTISAN CHEESES · OLIVES  
FRESH BREAD · PRESERVES  
PIES · DAIRY · SAUSAGES  
DOUGHNUTS · LOCAL ALE  
HOMEMADE CAKES · FRUIT  
& VEG · CIDER, WINE & GIN**

And lots more...

**SHOP  
OPENING  
TIMES  
WEEKDAYS  
8 - 4pm  
SATURDAY  
8 - 3PM**

SHOPS 8 HIGH STREET, HIGHWORTH T: 786399  
33 HIGH STREET, SHRIVENHAM T: 783999

FOOD TO GO PRICELIST ONLINE AT [WWW.BLOOMFIELDSFINEFOOD.CO.UK](http://WWW.BLOOMFIELDSFINEFOOD.CO.UK)

**Enviro  
PEST CONTROL**

We are a local business providing a professional and friendly service to commercial and domestic customers in Bishopstone and all surrounding villages.

Fully qualified - Insured - 30 years experience  
10% discount off standard rates with this ad

Mobile - 07379 276187  
Email - [enquiries@enviropestcontroltd.co.uk](mailto:enquiries@enviropestcontroltd.co.uk)  
[www.enviropestcontroltd.co.uk](http://www.enviropestcontroltd.co.uk)

# Bryn Llinos

A holiday cottage close to Beddgelert in the heart of Snowdonia

4\* Rated with 5\* Reviews

Excellent for beaches, mountains, walking, cycling and mountain biking

Heritage steam railway just 50 metres away at Nantmor Halt (Porthmadog to Caernarfon)

Discounts available for local residents to Bishopstone, please contact: [brynllynos@yahoo.com](mailto:brynllynos@yahoo.com)

[www.holidaycottages.co.uk/cottage/64657-bryn-llinos](http://www.holidaycottages.co.uk/cottage/64657-bryn-llinos)



# Watchfield Opticians

Opening hours:  
**9am – 5:30pm Monday to Friday**  
**9am – 1pm on Saturday**

Your local Opticians situated next to the Co-op in Watchfield.  
With parking available right outside and easy access.

- Full Eye Examination.
- OCT and OPTOMap scanning.
- NHS funded eye tests available for those eligible.
- Children's Eye Test.
- Contact Lenses.

Hearing Tests and Ear Syringing.

Great choice of glasses and sunglasses to suit all tastes and pockets.



2 Majors Road, Watchfield, SN6 8TQ  
T: 01793 783848 E: [info@watchfieldopticians.com](mailto:info@watchfieldopticians.com)  
[www.watchfieldopticians.com](http://www.watchfieldopticians.com)

## Welcoming Our Newly Co-opted Councillor: Geraldine Pass

Bishopstone Parish Council is de-lighted to announce the co-option of Geraldine Pass, who joined the Council at the June meeting. We are confident that Geraldine will be a fantastic addition to the team and look forward to the positive impact she will have as we continue working together for the benefit of the parish. Please join us in welcoming Cllr Geraldine Pass to Bishopstone Parish Council.

## Road Closure Confusion Across the Parish

Many residents will have noticed the misleading "Road Closed" and "Diversion" signs that caused un-necessary disruption at the end of May. These signs were placed by contractors working for Oxfordshire County Council in connection with a small resurfacing job in Idstone. Unfortunately, Swindon Borough Council had not been informed about the signage or road closures on their patch. Once SBC officers became aware of the confusion they acted quickly to request removal of the incorrect signs and restore normal access. The Parish Council is seeking assurances to prevent a repeat of this avoidable disruption.

### Financial report 2025-26

For the year 2025/26 the Parish Council maintained a satisfactory financial position, though making a substantial inroad into its reserves, starting the financial year with £25,735 in the accounts and finishing with £14,212. Income for the year 2025/26 was £23,922, made up from precept, interest earned on savings, closed graveyard grant, sub-contracted landscaping work at the Wyncies and a contribution from SBC to the major repair works carried out at The Dingle in Bishopstone. Expenditure at over £35,400 has been considerably higher than previous years, largely because of major works including the Dingle and five-yearly tree coppicing near the pond. Costs can be broadly summarised as: Landscaping and maintenance, Services of our clerk, Grounds maintenance at our two churches, Grants to Village Halls and Insurance/miscellaneous. As a consequence of increasing costs and reduced interest rates on savings, the council decided it would be prudent to increase the precept for the first time in a remarkable 12 years. This is the money the Parish Council receives from your Council Tax payment. The total precept will rise from £13,193.41 to £16,491.76 for the year 2026-27, taking the charge for a Band D property from £39.08 a year to £48.71 a year – that's 94p a week. We think residents still receive remarkable value for money. Thanks to very careful control of parish expenditure and councillors' continuing decision not to claim their official allowances, Bishopstone enjoys the lowest precept in the Borough of Swindon. The national average precept is £92.22 for a Band D property.

## One Parish Councillor Vacancy – Could It Be You?

Bishopstone Parish Council currently has **one vacancy** and is inviting residents to come forward for co-option. We are especially keen to hear from those living in Hinton Parva or Russley Park, as representation from across the parish ensures that every area has a strong and balanced voice within Council discussions. However, all eligible parish residents are warmly encouraged to express their interest. Serving as a parish councillor is a meaningful and rewarding way to contribute to village life. From shaping local

priorities to supporting community initiatives and helping safeguard the character of our parish, the role offers a real opportunity to make a positive impact. No prior council experience is required — just enthusiasm, commitment, and a genuine interest in local matters. If you care about the future of Bishopstone, Hinton Parva, and Russley Park, this could be the perfect moment to get involved. **The deadline for expressions of interest is Monday, 24 June.** To find out more or to put your name forward, please contact the Parish Clerk. Let's ensure our parish continues to thrive with strong, active representation from across our community.

## BISHOPSTONE PARISH COUNCIL

**Mrs Emma Parry (Clerk)**

Phone: 07763543634

Email: Clerk@bishopstoneandhintonparva.org

**Mr Ian Thomas**

Cllr.ianthomas@gmail.com

**Mrs Gill May**

Cllr.gillmay@gmail.com

**Mr Steve Bell**

Cllr.sbell@gmail.com

**Mrs Karen Walker**

Cllr.karenwalker@gmail.com

**Dr Karen MacGregor**

Cllr.karenmacgregor@gmail.com

**Mr Dai Wilson**

Cllr.daiwilson@gmail.com

**Mr Dinesh Thanigasaam**

Cllr.dinesh.thanigasalam@gmail.com

**Mrs Geraldine Pass**

Cllr.geraldinepass@gmail.com

**The Parish Council's policies and documents**

can be viewed at:

[bishopstoneandhintonparva.org](http://bishopstoneandhintonparva.org)

## PARISH COUNCIL MEETINGS 2026 /27

Meetings begin at 7.30pm. Late changes are shown at [bishopstoneandhintonparva.org/parish-council/](http://bishopstoneandhintonparva.org/parish-council/) and on the notice boards. Members of the press and public are welcome to attend.

### 2026

6<sup>th</sup> July **Bishopstone** 3<sup>rd</sup> August **Hinton Parva**  
7<sup>th</sup> Sept **Bishopstone** 5<sup>th</sup> October **Hinton Parva**  
2<sup>nd</sup> Nov **Bishopstone** 7<sup>th</sup> Dec **Hinton Parva**

### 2027

4<sup>th</sup> January **Bishopstone** 1<sup>st</sup> February **Hinton Parva**  
1<sup>st</sup> March **Bishopstone** 5<sup>th</sup> April **Hinton Parva**  
10<sup>th</sup> May **Hinton Parva**

## USEFUL INFORMATION

**Swindon Borough Council: Reception Premier House**

01793 465055/465056; **Civic Offices** 01793 463668;

**Wat Tyler House** 01793 463725

**For problems with waste collections call Streetsmart on:**

Monday to Friday 8am-8pm 01793 445501;

all other times 01793 466453

**Report fly-tipping or pot-holes to SBC:** [swindon.gov.uk/my-account](http://swindon.gov.uk/my-account)

**Wiltshire Police non-emergency number (less urgent than 999):** 101

**Borough Councillor Gary Sumner -** GSumner2@swindon.gov.uk

## PARISH COUNCILLORS' KEY RESPONSIBILITIES

**Finance** Karen Walker/Dinesh Thanigasalam

**Footpaths and Highways** Ian Thomas (Bishopstone)/Dai Wilson

**Pond & Island** Steve Bell/Dai Wilson

**Hinton Parva Village Hall** Karen Walker

**Bishopstone Village Hall** Steve Bell

**Hinton Parva Charities** Julian Cooke (PC nominee)

**Bishopstone United Charities** Doug Stevens

**Trees** Ian Thomas (Bishopstone)

**Responsible Financial Officer** Emma Parry (Clerk)

**Planning** Ian Thomas

**Website/IT** Gary Pass (community volunteer)

**Policies** Gill May/Karen MacGregor

**School liaison** Dai Wilson

**Russley Park** Dai Wilson

## CURRENT PLANNING APPLICATIONS

All planning applications, their history and all supporting documents can be viewed at: [www.swindon.gov.uk/planning](http://www.swindon.gov.uk/planning) Planning issues are discussed at the monthly Parish Council meetings. Public representations are heard prior to the start of the meeting.

**S/PAOTH/26/0246** Prior Approval Notification for the Change of use from agriculture to flexible commercial use (fitness studio falling in Use Class E at Ridgeway Barn, The Ridgeway, Bishopstone.

**S/HOU/26/0311** Erection of a post and rail fence (3ft high) and a new box hedge at West End Cottages, Icknield Way, Bishopstone.

**S/HOU/26/0305** Erection of a new greenhouse. It will replace an old existing 12'x 8' greenhouse on the same site at The Hawthorns, Cues Lane, Bishopstone.

**S/25/0666/REPPER** Land At Mount Pleasant Farm, Mount Pleasant Farm Lane, Horpit. Construction, operation, maintenance and decommissioning of a ground-mounted solar farm complete with landscaping, associated infrastructure and temporary access.

### GRANTED

**S/HOU/26/0227** Removal of single storey extension to front elevation. Erection of single storey and two storey side and rear extensions to dwelling. Formation of single storey glazed link to existing detached store to rear of dwelling. Erection of estate fencing to front boundary within site, gates and piers. Replacement terrace to side of dwelling. Conversion of outbuilding to ancillary annexe accommodation with associated works at Prebendal Farmhouse, Icknield Way, Bishopstone.

### APPEAL

**S/LDP/24/1400** Certificate of Lawfulness (proposed) for the removal of garden wall to create vehicle access at 2 Church Row, Hinton Parva.



Est. 1986

# Chappells

ESTATE AGENTS

Sales, Lettings & Property Management

**village specialists**  
**for over 4 decades**

Celebrate with us our  
**40<sup>th</sup> anniversary!**

Property experts with the experience others envy

✉ sales@chappells.uk.com ✉ lettings@chappells.uk.com 📞 01793 618080

35-36 Newport St, Old Town, Swindon SN1 3DP



## HERITAGE TREE CARE

Professional Tree Surgeons

**Comprehensive Service**  
**Qualified Staff**  
**Fully Insured**

- ✓ Pruning and Shaping
- ✓ Felling and Removal
- ✓ Hedge Cutting
- ✓ Stump Grinding
- ✓ Tree Planting

Free quotations and advice  
Call Ian Walding (N.C.Hort / N.D. Arb)

**01793 790210**

Email: [ian@heritage-treecare.co.uk](mailto:ian@heritage-treecare.co.uk)  
[www.heritage-treecare.co.uk](http://www.heritage-treecare.co.uk)



## THE OWL BARN

A MEMORABLE STAY IN HINTON PARVA

[theowlbarnwiltshire.co.uk](http://theowlbarnwiltshire.co.uk)





# Pureheat

Firewood

Top quality British firewood  
Kiln dried logs  
Hardwood & softwood logs  
Kindling & firelighters

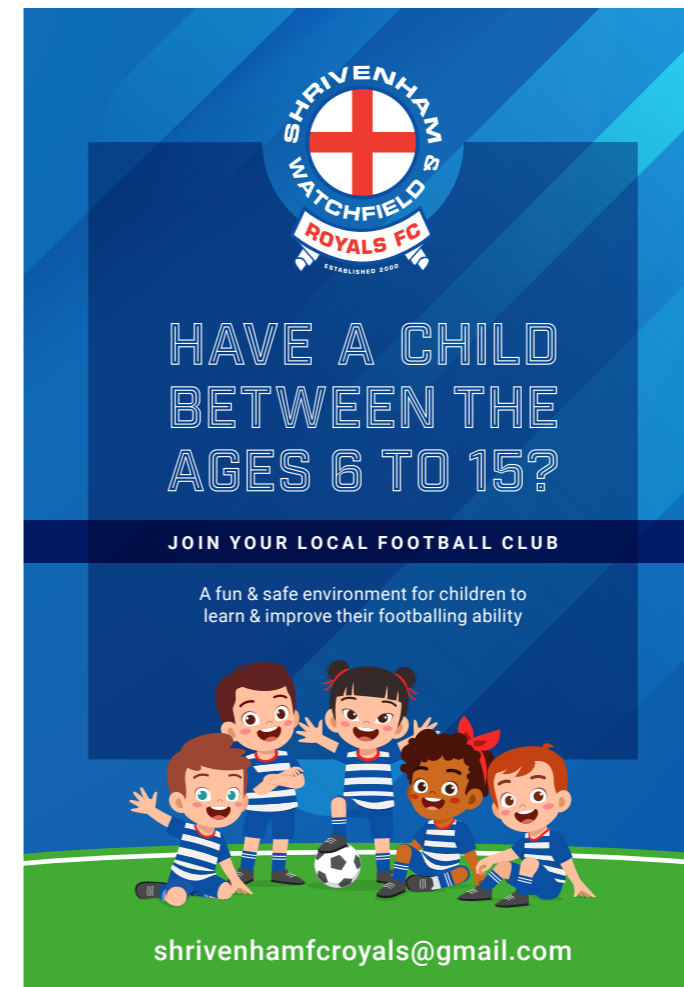
**FREE LOCAL DELIVERY**

Office: 01793 855277 Mob: 07885 542718

Find us on Facebook [pureheatfirewood.co.uk](http://pureheatfirewood.co.uk)

1 bag of kindling free with code **PHK** with all orders!

WOODSURE READY TO BURN




SHRIVENHAM WATCHFIELD 3 ROYALS FC ESTABLISHED 2000

**HAVE A CHILD BETWEEN THE AGES 6 TO 15?**

JOIN YOUR LOCAL FOOTBALL CLUB

A fun & safe environment for children to learn & improve their footballing ability



[shrivenhamfcroyals@gmail.com](mailto:shrivenhamfcroyals@gmail.com)



SHRIVENHAM FC SNG ENGLAND

**COME AND SUPPORT YOUR LOCAL CLUB**

Why not join us at our next home game for some proper local football, great people and a good time!



RECREATION GROUND SHRIVENHAM SN6 8BJ

# VILLAGE HALL news



## BISHOPSTONE BVH Reg Charity 271165 Hocker Bench

Village Hall Chair: Richard Walker  
01793 791 913 | richard@eddingtons.co.uk

## HINTON PARVA

By the time you read this, we'll have hopefully had our 'Pop Up Pop In Café' on Saturday 13th June. We'll give you an update in next month's News.

In the meantime, if you have any ideas for future events or would like to be involved in any capacity to help our beautiful village hall thrive, please get in touch at our email address [hpvillagehall@gmail.com](mailto:hpvillagehall@gmail.com).

Karen Walker on behalf of Hinton Parva Village Hall

➔  
**BOOK THE VILLAGE HALL FOR YOUR PARTY**

## BISHOPSTONE ALLOTMENTS AVAILABLE

On behalf of the Church Commissioners and their land agent Strutt & Parker, several half allotment plots are now available to rent by the local community. A perfect opportunity to grow your own fruit and vegetables.

The price is £8 per half plot per year (April to March)

No permanent structures such as sheds are allowed but low level storage is permitted.

Although livestock cannot be kept, bee keeping is encouraged by the owners.

**If you're interested in taking an allotment in Bishopstone, contact Steve Bell on 07598 185 643**



### VILLAGE HALL HIRE

Both Bishopstone & Hinton Parva Village Halls have availability if you would like to hire either of them.

#### BISHOPSTONE INFO/BOOKINGS:

Michelle Bishop: 07769 943 956  
Email: [miclawre@cisco.com](mailto:miclawre@cisco.com)  
Hourly rate: £11 residents, £15 non-residents

#### HINTON PARVA INFO/BOOKINGS:

Janet: 01793 791391  
Hourly rate: £10 residents, £12.50 non-residents

Do you enjoy singing?

Why not come and join Highworth Choral Society at a rehearsal on Monday 15th June 2026 as part of Highworth Arts and Literature Festival.

We look forward to welcoming you at 7.30 pm in St. Michael's Church.

There will be cake as well!

## JOEY JODPHUR (JJ)

FROM DEEP IN THE VALLEY OF THE RACEHORSE

A hole lot of bother... one of the major talking points in the racing world was the recent abandonment of a meeting at Haydock Park owing to a small sink hole appearing in the track, which a horse called Friendly Soul trained by John Gosden put their foot in. It was 500/1 odds that the horse placed their step in that exact spot but a worrying occurrence all the same. It follows on from the similar events at Cheltenham in January, where a delay in racing saw the last race staged in near darkness after significant realignment of the running line railings. Fortunately the filly at Haydock was unharmed but in an era when Racing Plc is doing so much to safeguard its social licence these apparent self-made problems are not what we need. Early investigations show that the cause is likely a collapsed clay drain pipe which would have been completely invisible to a human footstep or low ground pressure mower or tractor, and it was only when the 500kg equine's hoof came down that the hole was made. Fortunately for Haydock they have Dan Cooper to rely on, who is one of the best Clerks of the Course in the business. He has spoken expertly on the matter in the Racing media. As the name suggests Haydock is an old parkland course, historically a venue that staged hare coursing and match racing centuries ago. As with most racecourses, the land would've been deemed inadequate for arable production or housing development, probably through poor soil quality or drainage. Over the years, drainage systems would have been added but we only have records of these from 1990, so it's impossible to legislate for everything. More intense rainfall patterns, and the need to carry out more prolonged irrigation will have seen these pipes carry more water than ever before. As we know from our 'trusted' water supplier in the south of England – pipework does need upgrading from time to time! Dan will leave no stone unturned in his investigation and racing will only resume at the track once the authorities are satisfied that the surface is perfectly suitable to race on. There is radar technology out there to provide imagery of the soil profile, but all this comes at great cost to racecourses which are already struggling to attract the leisure pound in these difficult times. However, prioritising the safety of horse and rider at 35mph will probably make this decision for them.

On the track, Upper Lambourn trainer Ed Walker celebrated the biggest win of his burgeoning training career with Almaqam landing the Group 1 Tattersalls Gold Cup at the Curragh last weekend. On his seasonable reappearance, the Ahmed Al-Maktoum-owned 5-year-old faced no other than last year's Oaks winner Minnie Hauk from the all-conquering Ballydoyle stable of Aiden O'Brien, who already had an outing in the Mooresbridge Stakes, but she was no match for Almaqam who stormed to victory under Keiran Shoemark. The Lambourn star halved in odds for the Prince of Wales Stakes at the Royal Meeting and will have a host of other 10f Group 1 options this summer including the Coral Eclipse at Sandown and the Juddmonte International at York. Ed had pigeon-holed the horse as a mud-lark needing cut in the ground, but given last summer was the driest since 1976 and this year isn't far behind he is going to have to settle for running the horse on a much sounder surface, and he seemed to handle the drying Curragh ground well.

### JJ's Epsom Derby predictions

- Item (Andrew Balding)
- Benevenuto Ciellini (A P O'Brien)
- James J Braddock (Joseph O'Brien)



## Brandon's EXTERIOR CLEANING

# CLEANING SERVICES

Professional Cleaning for Bishopstone and Hinton Parva

**OUR SERVICES:**

- Window Cleaning FROM £20
- Gutter Clearing
- Gutter & Fascia Cleaning
- Driveway & Patio Cleaning

**FREE QUOTES!**

Text or Call  
**07392851487**



Find us online

# The Royal Oak Diary



A huge thank you to our glorious members of staff, from Bishopstone, Liddington, Shrivenham, Wroughton, Bourton, Ashbury, Swindon, India, Nepal and Ghana, for their amazing patience and work and charm handling 900 people on pig racing day, plus of course every other day of the year.

And the reason I wanted to start with that is to say a few words about our Ghanaian pair, Linda and Richard, who will turn their hands to everything we ask, with a smile, almost every day. I read in The Guardian (where else?) last month that a guy from India had been awarded £30,000 by the courts because the 'agency' that he paid to bring him over, legally, to work in the healthcare sector in the UK effectively proceeded to dump him here and provided no work. He was rendered destitute and homeless, but the courts felt he had been let down so made the agency compensate him. Our two Ghanaians have been luckier because they met a fairy godmother after they had been dumped in a similar fashion.

The fairy godmother was our German head chef Manfred Neder, and he convinced me to apply to the home office on their behalf. So we persuaded the officials there to amend the work sector in their visas from healthcare to food/hospitality, plus about £3000 paid to the Government, and the rest is history. This was apparently a typical post Brexit story—suddenly the UK workplace was open to non EU people, in certain sectors, and these quasi-official agencies sprang up and lured lots of people here with the promise of good work. Our two spent a few weeks in expensive training for healthcare work (very expensive, including appalling accommodation) and then—there was no job! The private healthcare company that got them via the agency had gone bust. Funny that. Another appalling stain on the way that business is conducted, too often.

Richard and Linda continue to make beds, assemble some puddings, grow and clean our vegetables, wash dishes and work surfaces and floors, and are made very welcome by the community that we all luckily inhabit.

While on the subject of great workers, just a mention for Nick Sturme, our almost lifelong kitchen porter, still turning up for



work most days and boring everyone to death about Chelsea football club, and Tom Farmery, who's been a senior chef here for more than 10 years and whose specialist subject is history, on audio books while preparing his suppers. And of course, Russell Hatch, who slaves scientifically below stairs in the beer cellar, and who creates all the elf and safety checks and docs that we are duty bound to show to various local authorities when you run a place like this.

We are so lucky to have all these people. AI would be hard pushed to replace them!

In terms of the pub—garden food available all summer, music of various sorts on sunny Saturday afternoons including **Gary Pass's band MASH on June 28**; and the **last quiz of the early summer on July 6**. We'll drop the quiz in August only. We have a large party/extravaganza in pre planning stage for the August bank holiday weekend. More details later, I hope.

Thanks

Tim Finney



**HELEN BROWNINGS** LIVE FOR TODAY • FARM FOR TOMORROW  
 01793 790481  
 @helenbrowningsorganic

**Food for Thought**  
**Mobile fish and chip van**  
 Available for private parties, weddings and all functions.  
 Find us each month at Charlbury Stables  
 (See the diary in this publication for actual dates)  
 Post Code: SN4 0DW  
 Tel: 07515 288414  
 Email: grahamrowcliffe58@outlook.com

**Wilson** Construction & General Builder  
 Lee Wilson

- FENCING & GATES**  
(Residential/Security/Commercial)
- DRIVEWAYS**
- GROUNDWORK & DRAINAGE**
- PATIO CONCRETE BASES & RAMPS**
- PATHS**
- PLASTERING**
- GENERAL MAINTENANCE**
- MINI DIGGER HIRE & SKIP LOADER WITH DRIVER**

**lee@wilsonconstruction.org.uk**  
 07894 759 055 | 01793 376 830  
 Pinfold | The Forty | Bishopstone | SN6 8PQ

**NO JOB TOO SMALL**

**GRANT FRASER TOWN & COUNTRY**

We are a family owned, fully independent company who take pride in getting customers moved onto their next milestone in a simple and stress-free way.

If you are thinking about selling your property, to arrange a free, no-obligation valuation today, contact:

01793 228 440 | 07737 745 231 | grant@grantfrasertc.co.uk  
 www.grantfrasertc.co.uk

community  
catalysts®

unlocking potential  
effecting change



Want to make a real difference to people  
in your neighbourhood?  
Ever considered setting up your own small  
business that supports people to thrive?

## Community Catalysts can help!

Our free programme helped Fabia  
share her own experiences to offer  
support for others

Want to be like Fabia and  
run your own small business?



## Take that first step today!

Anita Wingad

Community Catalyst

a.wingad@communitycatalysts.co.uk

07341 425126



CommCatsValeofWhiteHorse




enquiry form



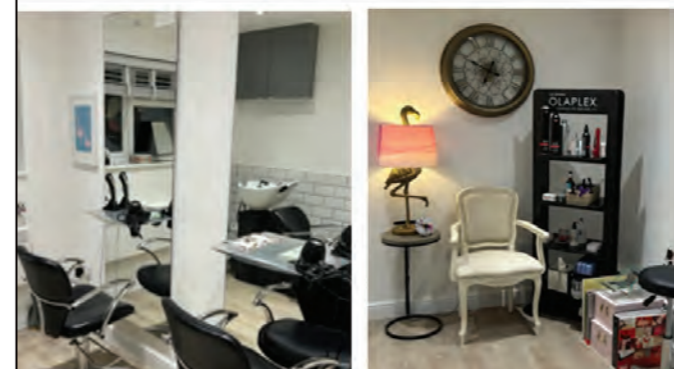
SCAN HERE

Rachel Payne  
Professional Hairdresser



-  Established 25 years
-  Based in Bishopstone
-  Olaplex, Moroccan Oil & Schwarzkopf Treatments Available

For Appointments & Consultations  
Contact 07527 607947





**KERRY CARE**  
Collective  
*Private Bespoke Home Care*

**Tailored support, delivered by experienced personal assistants**

-  REGISTERED PROFESSIONAL
-  INSURED
-  DBS CHECKS

- Full Care Packages
- Breakfast, Lunch, Tea and Bed visits
- Medication Assistance
- Shopping & Prescription Collections
- Domestic and Laundry Service
- Meal Preparation
- Companionship
- End of Life Family Support



**Care, you can count on and trust**

kerry.a.hartley@gmail.com    07726598105



**EDWARD BAYS LIMITED**  
HEATING & PLUMBING

AT YOUR SERVICE SINCE 1912

All Commercial and Domestic  
Plumbing and Heating Works

- Servicing
- Gas/Oil/LPG
- Maintenance
- Safety Checks
- Commissioning
- Rayburn & AGA

- Bathrooms
- Installation
- Fuel Tanks
- Design
- Mechanical
- Renewables

Contact us today on

01793 763790

admin@edwardbaysltd.co.uk 

- ✓ OFTEC CERTIFIED
- ✓ CIPHE APPROVED
- ✓ GASSAFE CERTIFIED

- ✓ WORCESTER ACCREDITED INSTALLERS
- ✓ GRANT GI INSTALLERS
- ✓ GLOWWORMCLUB INSTALLERS

www.edwardbaysltd.co.uk



# Pearce Funeral Services



## Our Family Service, Caring for You

- Independent family run funeral directors in Swindon
- Compassionate staff who treat every funeral as personal
- Available 24 hours a day, 7 days a week, 365 days a year
- 30 years experience and more than 500 five star reviews
- Home visits always welcomed
- Committed to the fair funeral pledge

"Such a high standard that I would suggest many in this difficult business would struggle to emulate"

"Outstanding is an understatement"

"Incredible service"

"If it hasn't been done before, they will find a way"

For our truly personal service feel free to phone, email or visit one of our branches.

**01793 832 072**

92 Ermin Street  
Stratton St Margaret  
Swindon, SN3 4NN

[pearcefuneralservices.co.uk](http://pearcefuneralservices.co.uk)

**01793 422 422**

Papermakers House  
Rivenhall Road  
Westlea, West Swindon, SN5 7BD

[info@pearcefuneralservices.co.uk](mailto:info@pearcefuneralservices.co.uk)



Included in the Good Funeral Guide since 2011 in recognition of our high standards of service.

# LOCAL BUSINESS DIRECTORY

## Estate Agents

**CHAPPELLS ESTATE AGENTS**  
01793 618 080  
sales@chappells.uk.com

**GRANT FRAZER TOWN & COUNTRY**  
01793 228 440 | 07737 745 231  
grant@granfrazertc.co.uk

## Health & Wellness

**COMMUNITY CATALYSTS**  
07341 425 126  
awingad@communitycatalysts.co.uk

**RACHEL PAYNE HAIRDRESSER**  
07527 607 947

**SHRIVENHAM FOOTBALL CLUB**  
shrivenhamfc.co.uk

**WATCHFIELD OPTICIANS**  
01793 783 848  
info@watchfieldopticians.com

## Home Services & Trades

**ENVIRO PEST CONTROL**  
07379 276 187  
enquiries@enviropestcontroltd.co.uk

**HERITAGE TREE CARE**  
01793 790 210  
ian@heritage-treecare.co.uk

**MOWERFIXER**  
07899 791 833  
doug@mowerfixer.co.uk

**WILSON CONSTRUCTION**  
07894 759 055 | 01793 376 830  
lee@wilsonconstruction.org.uk

## Hospitality & Accommodation

**BRYN LLINOS**  
brynllinos@yahoo.com

**FOOD FOR THOUGHT**  
07515 288 414  
grahamrowcliffe58@outlook.com

**HELEN BROWNING'S ROYAL OAK**  
01793 790 481  
info@helenbrowningorganics.co.uk

**THE OWL BARN**  
hello@theowlbarnwiltshire.co.uk

**VILLAGE HALL: BISHOPSTONE**  
07769 943 956  
miclawre@cisco.com

**VILLAGE HALL: HINTON PARVA**  
07916 599 772  
Email: ellakusta01@gmail.com

## Professional Services

**JANE PEARSON DESIGN - GARDEN**  
07811 367 320  
janepearsondesign@icloud.com

**LULI CREATIVE DESIGN - GRAPHIC**  
07795 086 197  
info@luli.uk

**PARISH COUNCIL**  
07913 819 422  
clerk@bishopstoneandhintonparva.org

**PEARCE FUNERAL SERVICES**  
01793 832 072 | 422 422  
info@pearcefuneralservices.co.uk

## Retail & Shopping

**BISHOPSTONE STORES**  
shop@helenbrowningorganic.co.uk

**BLOOMFIELDS FINE FOODS**  
01793 783 999 | 766 399  
bloomfieldsfinefood.co.uk

**PUREHEAT FIREWOOD**  
01793 855 277 | 07885 542 718  
pureheatfirewood.co.uk

# GENERAL INFORMATION

## Team

**ADVERTISING:**  
Mark Jordan: markjordan3@icloud.com

**PUBLISHING EDITOR & PHOTOGRAPHY:**  
Andrea Wadsworth: andrea@luli.uk

**SUB-EDITOR:**  
Val Brodin: valbrodin@gmail.com

**CREATIVE COPY:**  
Roving Reporter Bob  
Guest Contributors: BishopstoneEditor@gmail.com  
Fanny Hole: BishopstoneEditor@gmail.com

**TREASURER:**  
Andy Pocock: andrewpocock@yahoo.co.uk

**DISTRIBUTION:**  
Yuet Dickinson: 07757 998 698

## Contributions

If you'd like to write an article or submit any photography please email Andrea or Val for consideration in the next issue. We aim to distribute the newsletter on or around 15th of each month.

Please note that the **DEADLINE** for any submissions will be the last day of the previous month. We welcome submissions earlier, if possible. As we are volunteers and manage the village news alongside our other jobs, late submissions run the risk of not being included. Thank you for your understanding and cooperation.

If you would like an advert designing for placement in the village news, please contact [andrea@luli.uk](mailto:andrea@luli.uk) who offers a discounted rate for Village News adverts.

## Submitted images

By submitting images for use in the Village News, whether for editorial or advertising purposes, you accept personal responsibility for complying with copyright laws related to those images. The Village News is not liable for any fines resulting from unlawful use of images. If you obtained an image online without purchasing it from a stock library or receiving permission from the copyright holder, it is likely that you do not have the right to use it. If you are uncertain, various online tools are available to check image copyrights.

## We are non-profit!

The Village News is created and run by a small group of volunteers and is a non-profit organisation affiliated to Bishopstone Village Hall. Reg Charity no 271165.

## Donations

If you would like to make a donation to help with the upkeep please contact Treasurer Andy P, or there are additional copies available and a donation box on the counter in Bishopstone Stores.



FIND US ONLINE

www.bishopstoneandhintonparva.org

f /groups/bishopstoneandhintonparva

Send us your DIARY DATES  
Email: BishopstoneEditor@gmail.com

# June 2026

2026	Time	Event	Place	Contact
Sat	13.06.26 12.00-4pm 5pm-late	Liddington Summer Fete & Party at the Pub (see pg. 2)	Liddington Playing Field & All Saints	liddingtonfete@btinternet.com Andrew: 07973 655613
Thurs	18.06.26	Gardening Club: Trip to Hidcote (pg. 5)		Marion Peck 01793 791 001
Sun	28.06.26	MASH: Live Music at the pub (see pg.18)	The Royal Oak	01793 790 481
Fri	10.07.26 5pm-8pm	Food for Thought, Hinton Parva: Fish and Chip van (pg.19)	Charlbury Stables SN4 0DW	grahamrowcliffe58@outlook.com
Sat	25.07.26 2pm	Gardening Club: Guided Tour of Lower Farm (see pg. 5)		
	1&2.08.26	Great British Food Festival	Lydiard Park	greatbritishfoodfestival.com/tickets/lydiard-park
Sat	22.08.26 12.00-5pm	Wanborough Village & Country Show	SN4 0DA	wanboroughshow.org
Sun	30.08.26 12.00	Street Food Festival	Wood St, Swindon	
Sat	12.09.26	Village Fete: Save the Date!	Winding Wood Field Bishopstone	littlecot2010@hotmail.co.uk 07789 414147
Sun	27.09.26	Swindon Half Marathon		swindonhalf.co.uk
	1st Monday of each month 7pm	Pub Quiz	The Royal Oak	Book a table: 01793 790 481
	1st Friday of each month 6.30pm	Cafe Jazz	The Royal Oak	01793 790 481
Every 3rd Sat from 18.01.25	9am - 12pm	Wanborough Farmers Market	Wanborough Village Hall, SN4 0AD	Lorna Naseem 07903 210 505
Every Tuesday	9.30am	Fitness Classes. All abilities	Bishy Village Hall	lorna.sams@outlook.com
Every Thursday	10.30 - noon	Coffee, Cake and Chat, Wanborough. £5.00, all welcome	The Brewers Arms SN4 0AE	If you need a lift, call Lorna: 07903 210 505
2nd Mon of month	7pm	The Burj Fundraising Supper: for The Prospect Hospice (charity number 280093)	The Burj, Foxhill	WrightK@warnefordschool.org.uk
2nd Thurs of month	7pm Start 7.30pm	WI: Bishopstone & Hinton Parva WI	Either Village Hall	Jan Chapple: janatwan@icloud.com

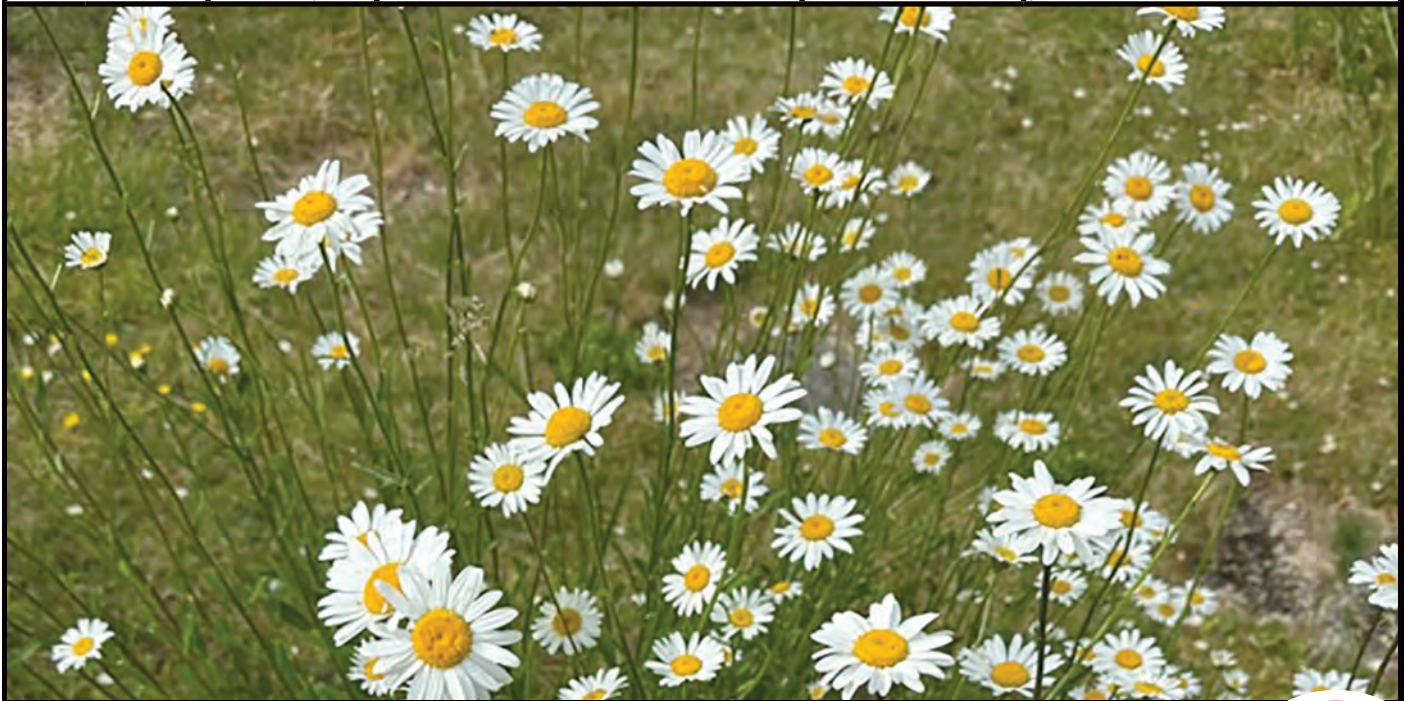


Photo: Bishopstone Daisies

Church Services – pg 10 Parish Council Meetings – pg 13

The views of individual writers expressed in this magazine do not necessarily reflect those of the editors, the parish council or the church. If you have any feedback or questions, please contact one of the editorial team listed on page 23. Apologies for any stray typos. We try hard to catch them all but occasionally some escape. You may also deliver items by hand to Bishopstone Stores and Lynne will kindly pass anything on to us. Please make sure that you include any names and contact details so that we may get in touch with you. None of these personal details will be published unless we are specifically asked to do so.

Tell us your thoughts!  
**'LETTERS TO THE EDITOR'**  
Email: BishopstoneEditor@gmail.com

Dates are correct to the best of our knowledge at time of going to print. Please see Facebook for any interim updates.

Stick me on your fridge